



HECATE † CAILLEACH † CERRIDWEN † MORRIGAN † HARIANRHOD †
† SHELLAR †

ALCHEMY



England · 1977

EXTRAORDINARY DESIGN

LUNACALIA



THE NIGHT OF LUNACALIA

She was lost, intoxicated by her self-induced reverie, bathed in the consummating glow of the full moon and enwreathed in the sonorous aura of a host of timeless goddesses. Such reverential visitants were at last invoked with the precious intervention of Grimalkin, feline shadow of Macbeth's fateful oracle.

Her unfading search for love and spiritual fulfilment is on the verge of attainment on this, the night of her Lunacalia, through her deep knowledge and devotion to the *diva triformis* and the goddess Luna herself. One last phase of her Selenian ritual must be performed to be finally inducted into the magic of amour. The guttering candles expire, and only *she* knows what must now be done...

Product Key

N NEW!

Items with this symbol are new products.


‡ Crystals

The colour of the crystals and gemstones featured within this brochure may vary at point of manufacture, according to availability.

◆ Swarovski Elements

Items with this symbol are made with SWAROVSKI ELEMENTS.

Further Information

 Online, at www.AlchemyEngland.com, you will find fuller and extended product descriptions and detail. And in News & Community there, you can go to the dedicated www.alchemygothic.com website, click on the Museum & Library link and find a choice of reference features: full backgrounds and stories behind Alchemy pieces; detailed articles on the symbols, histories and characters of Alchemy Gothic's subjects and designs; view all of Alchemy Studio's artwork; find out who is The Alchemist, and very much more.

‡ Replacement Glassware

In the case of accidents, a product repair and glass replacement service is available to our customers. For details contact our factory directly : servicedept@alchemygroup.com

Hand Made In England

All of Alchemy England's pewter products are individually designed, modelled and developed in England by the Alchemy Studios creative art and design team. Each individual product is then hand-made with pride from the finest English Pewter by Alchemy's own highly skilled craftsmen, all at our studios and workshops in Leicester, England.

Website

All of the items shown in this catalogue can be seen with many more image views, information and in greater detail on our website, at:

www.alchemyengland.com

Cover Illustrations

Front: 'Lunacalia'. Back: 'Cernunnacht'. © Alchemy 2018/19.

For the **Alchemy Lifetime Guarantee**, and **Looking after your Alchemy** etc, please see page 83.

We are, now, firmly established in our very own 200-plus year-old new home, the venerable Saint Mary's Mill, a great 18th century building that replaced numerous incarnations on this site going back at least as far as the Norman King William's Domesday Book of 1086. This site, just outside Leicester, England, sits overlooking the ancient, meandering River Soar with its willow trees and wildlife, just as it ever did upon its resourceful little island. Our small and diligent team of artists, craftsmen and service crew are proud to be working creatively for you - our unique and select group of customers who appreciate our opus, and we would like to thank you, again, for your unwavering support and patronage over Alchemy's 40-plus year career. We hope to never disappoint you and wish to continue satisfactorily serving you for aeons to come.

Your humble servant,

The Alchemist 

POINT OF SALE

Display boards are available for Alchemy's retailers.

Dealers please contact the sales team for more details.

Boards measure approx: 27.8cm (11") wide X 36.7cm (14 1/2") high.



ALCHEMY



Model is wearing :

HH12 Wild Black Rose hair slide

E347 Bacchanal Rose earrings

P695 The Romance Of The Black Rose pendant

A125 Wild Black Rose bracelet

Model : **Dragonfly**

facebook.com/GuiDragonfly

CONTENTS

Neckwear

Pendants / Necklaces / Chokers / Chains / Neck Thongs . . . 4 - 31

Earrings

Earrings / Ear Wraps / Cuff Studs / Faux Stretchers
Single Earrings / Stud Pairs 32 - 41

Rings 42 - 46

Armwear

Wriststraps / Bracelets / Bangles 47 - 53

Timepieces 54 - 55

Buckles & Belts 56 - 57

Accessories

Shopping Bag, Quill Pen, Fragrance Diffuser, Cuff Links,
Dress Pins, Pill Box, Black Rose 58
Hair & Beard Accessories, 59

Drinking Vessels

Ale Glasses / Tankards / Goblet / Absinthe 60 - 61

The VAULT

Resin Giftware 62 - 75

Bags

Women's & Men's Bags / Purses / Wallets 76 - 77

T-shirts 78

Under License Products

Hanging Signs / Playing & Tarot Cards 79

Licensing 80 - 81

Alchemy England Apparel (AEA) fashion 82

Important Info 83

www.alchemyengland.com



Model is wearing :
 P855 Witches Heart pendant.
 Model : **Dragonfly**
 facebook.com/GuiDragonfly

1
 P769
 Voodoo
 Doll



2
 P855
 Witches
 Heart

3
 P857
 Hamingja



4
 P861
 The Black Pearl
 Of Plage Noir



5
 P848
 Wounded
 By Love

**P847
 Gorgon's Eye**

Necklace
 The very essence of the gorgon
 Stheno's dreaded evil eye.
 With green Swarovski crystal
 eye. **N** † ♦
 Shown here with NEW R228
 Psalm 68 ring (see page 42)



GORGON'S EYE

6
 P852
 Phantom



NECKWEAR



All necklaces and pendants are cast and hand-made in fine English pewter, many with additional high quality crystals, Swarovski Elements and other components. Some feature hand-plating and/or other contrasting finish and all come complete upon either nickel-free chain or other necklace as shown, of appropriate length.

Visit our website www.AlchemyEngland.com for additional views and more detailed information.



For more information behind Alchemy's arcana of subjects, relating to products, symbols, designs and very much more, see "Further Information" on page 3.



7
P849
Luna Rose

Model is wearing -
P847 Gorgon's Eye necklace
R228 Psalm 68 ring
Model : [Elisanth](http://www.elisanth.com) - www.elisanth.com
Photo : [Zatsepin Alex](http://www.zatsepin-alex.com) - www.zatsepin-alex.com
Lenses : [Samhain](http://www.samhain.com) - www.samhaincontactlenses.com

1 P769
Voodoo Doll
Pendant

Of ancient European origin, the traditional way to destroy a witch's power; with black cord noose & chained pewter piercing pin.
Matching stud earring, E408 page 40.

2 P855
Witches Heart
Pendant

Dark practices from the mists of antiquity, perhaps to scorn a former lover?... With black pewter heart & chained pewter piercing nail. **N**

3 P857
Hamingja
Necklace

The Norse guardian angel, delivering love, luck and happiness to her consort. With suspended Swarovski vitrail heart crystal. **N** ‡ ✦

4 P861
The Black Pearl Of Plage Noir
Pendant

The rare iridescent black pearl with propitious powers from the famous Death Conch. Swarovski black pearl. **N** ‡ ✦

5 P848
Wounded By Love
Necklace

The naked heart of an innocent, pierced by ill-fated romance. With translucent red enamel & black acrylic rose. **N**

6 P852
Phantom
Necklace

A throng of bats to menace the unsanctified. Centred with large Swarovski crystal. **N** ‡ ✦

7 P849
Luna Rose
Pendant

A token of strange devotion from a vampire lover on a full moon. With large black acrylic rose surrounded by 'moon' yellow enamel. **N**

ALCHEMY

England · 1971



◀ **P786**
Wiccan Elemental Pentacle
 Necklace
 The five elements conjoined within the circle of the universe. ‡ ✦



P785 ▼
Wiccan Goddess Of Love
 Double Necklace
 The Triple Goddess in phases of the moon, stimulating spirituality, love, romance, passion and sexuality. ‡ ✦



P845
Goddess
 Pendant
 Combining fire, water, earth, air and spirit with Wicca's triple moon and a crystal to focus your magickal energies. With Swarovski crystal dropper. **N** ‡ ✦



P863
Regiis Martyris
 Necklace
 Regiis Martyris -The Nine Days Queen. The lost necklace of Lady Jane Grey. Necklace is adorned with graphite crystal studs, silvernight dropper & an impressively lavish amethyst crystal centrepiece. **N** ‡ ✦
 Shown with NEW matching earrings E420.

E420
 Regiis Martyris earrings

Danze Macabre

Model is wearing :
 P863 Regiis Martyris necklace.
 Model : **Nell Montague-Rendall**
 Photography : **Sarah Owers**
 © 2018





P853 Sophia Serpent

Necklace

The Ouroboros, ancient symbol of eternity, rebirth and unity. Also see The Sophia Serpent earrings, ring & bangle, pages 34, 44 & 51. **N** † ♦



P859 Solomon's Boline

Pendant

The most essential of the ceremonial Wiccan magical weapons. On black chain, with a mother-of-pearl cabochon set into the handle. **N** †



Model is wearing :
P860 Petit Ouija pendant,
P845 Goddess pendant.

Model : **Dragonfly**
facebook.com/GuiDragonfly



P766 Planchette

Pendant

The spiritualist's device for communicating with the dead... ICU. Set with a realistic taxidermal eye. Coordinating items, pages 35 (earstuds), 44 (ring) & 51 (bracelet).



P860 Petit Ouija

Pendant

Peep into the underworld with a talking board. Set with a red taxidermal eye. **N**



P858 Infinitum

Choker

Forevermore - the element of your mortal existence destined to be endless... Framed by 2 black diamond Swarovski crystals. Companion bracelet, A129 page 51. **N** † ♦



P846 Lune Noir

Pendant

A dolorous moon portends an oppressive and melancholy episode. With black diamond Swarovski studs & jet dropper. **N** † ♦



P858 On faux leather (vegan) choker with adjustable chain.

P810 Triple Goddess

Choker

The pearly full moon flanked by the waxing and waning crescents invokes healing, occult protection and wealth. With mother-of-pearl & Swarovski crystals. † ♦
Shown with matching earstuds, E401 and ring, R219. Can also be worn as a bracelet.



R219



FRIENDSHIP NECKLACES



**P851
Darkling Heart**
Couples Friendship
Pendants

Two dragon-wing pendants, forming a perfect heart frame when held together. In high contrast black & silver finishes. **N**

ALCHEMY
England • 1971



**P834
Coeur Crâne**
Couples Raven
Promise Necklace

Two complementing raven's skulls; when together they're a discreet heart of bone - when apart, a covert token of a netherworld affair. Sold as two separate necklaces.



Model : **Honey Hulala**
@honey_hulala

Model : **Dorian Dane**
@dorian.dane

**P811
Draconic Tryst**
Sweetheart / Couples /
Friendship Necklace

Consorts of darkness collude and entwine with adamantine embrace, to belong to one another for eternity. An interlocking, separable, two-tone double necklace.

Magnetic catch fastening.



RÖSE GARDEN



Alchemy's Nocturnal Bouquet



P844
Færie Glade
Necklace

The ephemeral delicacy of a garden fairy reflecting the short but sweet life of a black rose. With black acrylic rose.



P842
Quietus Rose
Pendant

A portent of death, or an invitation to an immortal existence in the afterlife? With black acrylic rose.



Model is wearing :
P843 New Romance pendant.



P838
Rosenkatze
Necklace

A uniquely fortunate combination, with the luck of a black cat being cast upon the love of a black rose. With black acrylic rose.



P843
New Romance
Pendant

The new moon brings with it a promise of new love. With black acrylic rose.



P839
Love Never Dies
Necklace

Sending love from the grave... With black acrylic rose.



Model is wearing :
P839 Love Never Dies necklace.

Model & Photography :
Magda Corvinus
@magda_corvinus



P841
Love Returns
Necklace

The swallow, symbol of a safe return and with it, the passion that seemed gone for ever. With black acrylic rose.

LOVE NEVER DIES



P702
Herz Leben
Pendant



A gothicised symbol of eternal life, the ankh, melded subtly with the background heart and prominently surmounted by a sumptuous jet gemstone of Swarovski crystal. †

Model is wearing :
P795 Mesukmus necklace

Model : **Mademoiselle Karma**
Photo : **Annie Bertram** - www.anniebertram.com

1 P771
Epiphany Of St. Corvus
Necklace

The dove of peace and love conjoins with the raven of conflict and battle, harmonising in romantic salvation; two-tone pewter with contrasting white & jet Swarovski crystals. †

2 P802
Vampire Loveheart
Necklace

Telling of an enigmatic union between two deviant paramours. With suspended Swarovski crystal heart. †

3 P121
Gothic Bat
Necklace

Creature of the night in full flight; on split chain.

4 P722
Alter Orbis
Necklace

A pitifully brutal end to mortal existence, and an exquisite entry into the "Other World".

5 P836
The Maiden's Conquest
Necklace

Only the magical charms of a true and virtuous maiden are able to entrap the heart of a wild unicorn. With bronzed spiral unicorn horn and scarlet Swarovski oval crystal. †

6 P711
Crystal Heart
Pendant

A pure heart of rainbow-spangled white crystal is set inside a simple foliate frame of Victorian sentiment; Swarovski crystal. †

7 P446
Coeur Sauvage
Necklace

Conflicting beauty and duality of the heart; with Swarovski crystal heart. †

8 P795
Mesukmus
Necklace

A gratuitous commemoration of 'Sweet Death' from ancient Kabbalistic, Hebraic mysticism and delivered by the dark angels. †



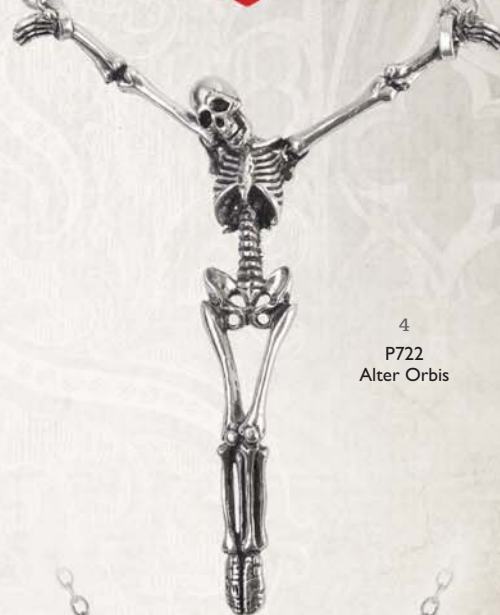
1
P771
Epiphany
Of St. Corvus



2
P802
Vampire
Loveheart



3
P121
Gothic Bat



4
P722
Alter Orbis



5
P836
The Maiden's
Conquest



6
P711
Crystal
Heart



7
P446
Coeur
Sauvage



8
P795
Mesukmus

**P758
Black Rosifix**
Pendant
The tangled cross of deep
devotion, passion and eternal
mystery. ‡



R227
NEW
Blood Rose
ring
(see page 42)



‡ Specified crystal colours are subject to availability and may be substituted.



Model is wearing :
P818 Kraken necklace
R221 Kraken ring
 Model : **Lara Mauve** - @lara_mauve
 Photo : **Annie Bertram** - www.anniebertram.com

1 P807
White Hart, Black Rose
 Necklace

The hart's skull and a Black Rose is the spell to invoke arcane and passionate encounters.
 An antiqued pewter stag's skull with a rose garland about its horns, the centre one being of black acrylic.

2 P803
Love Over Death
 Pendant

The submerged, gothic Latin inscription reads 'Love shall endure, even in death'; with translucent deep red enamel.

3 P701
Viennese Nights
 Necklace

The decorous Renaissance scrollwork is subtly fashioned in the form of the quintessential creature of the night; with bat bodies of black Swarovski crystals. ‡ ✦
 Matching bracelet page 52 & earstuds page 41.

4 P806
Pègre de les Bois
 Necklace

'Woodlands of the Underworld' pervaded by the spirits of Hades. Set with five amethyst cabochons. On two, doubled 7mm wide black satin ribbons. ‡

5 P819
Incrowtation
 Necklace

The feathers and bones of a raven; essential constituents of a desirous conjuration. With black pewter feathers & polished crow skull.

6 P820
Hydra
 Necklace

In Greek mythology the entrance to the Underworld was guarded by the dreaded serpent.
 With red Swarovski crystal eyes, on an adjustable, double black braided cord necklace. ‡ ✦

7 P723
Heart Of Cthulhu
 Necklace

A revealing of the monstrous, crystallised soul of darkness. With faceted Swarovski 'Aurore Boreale' crystal heart. On a 33" trace chain. ‡ ✦

8 P743
Aequicorn
 Pendant

The preserved remains of an elusive, mythical and magical creature of the shallow seas, the famed horned seahorse, identified in Solinus' lost classical bestiary; with Swarovski crystal. ‡ ✦

1
P807
White Hart,
Black Rose



2
P803
Love Over
Death



3
P701
Viennese
Nights



4
P806
Pègre de
les Bois



5
P819
Incrowtation



6
P820
Hydra



E409



**P818
Kraken**

Necklace

You strain to escape the feel of the monstrous tentacles writhing to take a stranglehold on your neck...

Set with a large, Volcano effect, pear-shaped Swarovski crystal. ‡

Shown with Kraken earrings, E409 and Kraken ring, R221. (See also Kraken earwrap, E309 page 39).

7
P723
Heart Of
Cthulhu



8
P743
Aequeicorn



R221

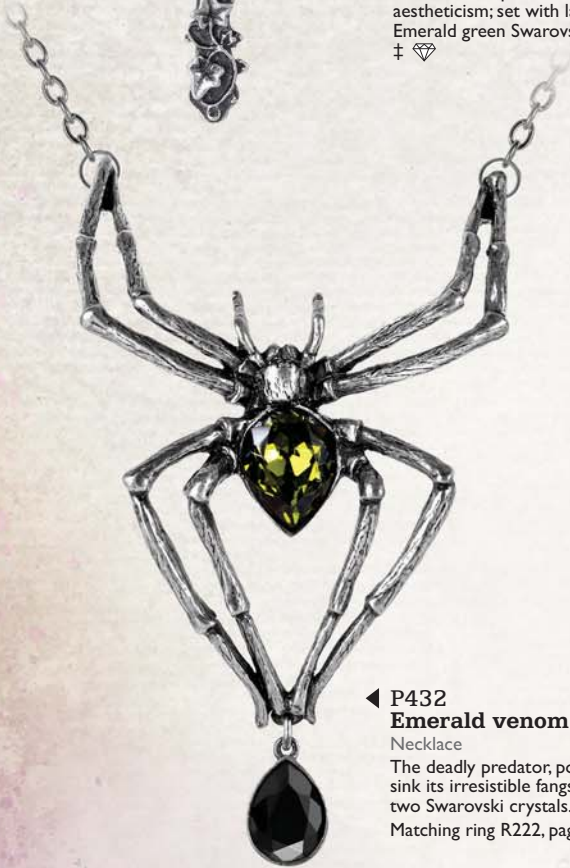


KRAKEN

Shown smaller than actual size



◀ **P804 Ivy Cross**
Pendant
The passing of time obscures a heartbreaking truth... Set with Swarovski Dark Rainbow crystal. ‡



◀ **P432 Emerald venom**
Necklace
The deadly predator, poised to sink its irresistible fangs; with two Swarovski crystals. ‡ Matching ring R222, page 42.



◀ **P503 Queen Of The Night**
Necklace
The antipathy of the ancient Iranian prophet sage Zoroaster's 'Moral Order'. A flamboyant Swarovski crystal-laden baroque extravagance representing opulence and decadence. ‡ Shown with matching earrings (E415).

QUEEN OF THE NIGHT

EXTENDED INFORMATION, VIEWS AND SPECS ARE AVAILABLE ON EVERY ITEM AT WWW.ALCHEMYENGLAND.COM



P712 ▲ Empyrean Eye: Tears From Heaven
Necklace
The eye of God, shedding tears of grief for humanity as he regards the world from the highest firmament; with striking 'Aurore Boreale' Swarovski crystals. ‡ Matching earrings; E350 on page 35.



P825 ▲ Countess Kamila
Necklace
A unique gift of love from the Earl of Ravenspurgh to his ravishingly beautiful wife. With large light amethyst Swarovski crystal heart and crystal droppers. ‡



◀ **P763 The Green Goddess**
Necklace
Inspiration to poets, artists and intellectuals, and known to Aleister Crowley as the Green Goddess absinthe. ‡



P526 ▶ Absinthe Fairy
Necklace
The spirit of wormwood rises from the absinthe-green enamelled visage of mortality; with Swarovski crystal. ‡

Shown smaller than actual size

Made with - **SWAROVSKI ELEMENTS**



**N203
Angel Ring
Neck Thong**

Neck Thong
The seven planetary angels are depicted within the enamel, with the reverse side inscribed with their respective names, planets and days.



**P346
Anguis Aeternus
Pendant**

The Dragon of Eternity sustains the faceted vitrial crystal of life; Swarovski crystal. ‡



**P790
Glistercreep
Pendant**

Petrified exoskeleton of a grotesquely repellent arthropod. ‡



**P776
Clutching Life
Pendant**

Death, grasping at anything seen to glow with the light of life.... With amethyst glass orb. ‡



ALCHEMY
England · 1971

Model is wearing -
P432 Emerald Venom necklace
R222 Emerald Venom ring

Model : Obsidian Kerttu
facebook.com/ObsidianKerttuOfficial/
Photo : Nevena Mitrovic
instagram.com/nena.mit/

‡ Specified crystal colours are subject to availability and may be substituted.



1
P229
Wolverine
Moon



2
P827
Eye Of
Providence



3
P832
Eye Of
The Dragon



4
P797
Maloik: Sign
Of The Horns:
Maschio



5
P796
Maloik: Sign
Of The Horns:
Femmina



6
P800
Passio: Wings
Of Love



7
P124
Mediaeval
Pentacle



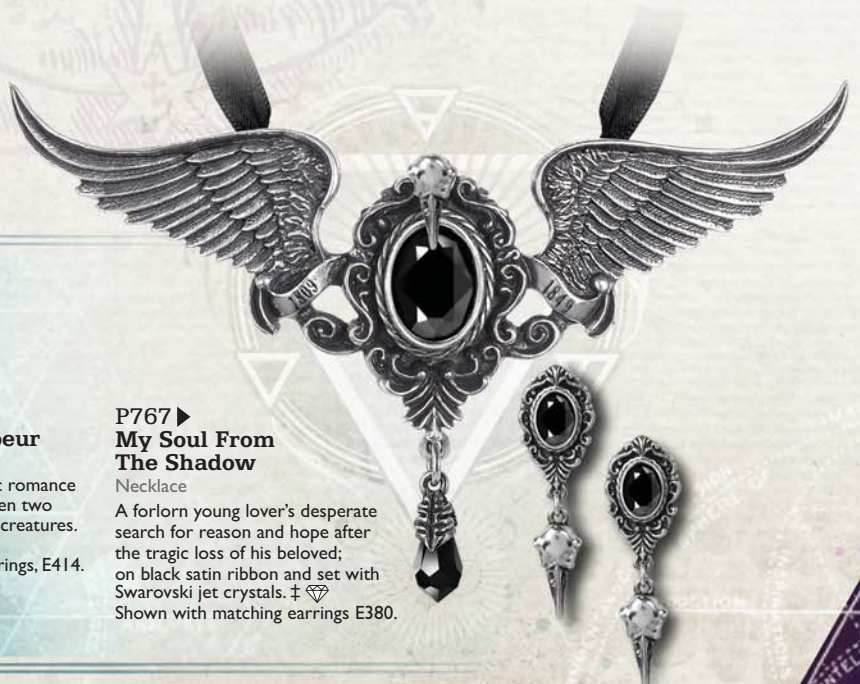
8
P235
Dante's Hex



9
P822
Talismanik



▶P792
Affaire du Coeur
Pendant
A dark and Delphic romance
of the heart between two
strange and exotic creatures.
‡ ♦
With matching earrings, E414.



▶P767
**My Soul From
The Shadow**
Necklace
A forlorn young lover's desperate
search for reason and hope after
the tragic loss of his beloved;
on black satin ribbon and set with
Swarovski jet crystals. ‡ ♦
Shown with matching earrings E380.



1 **P229**
Wolverine Moon
Pendant
Beware the full moon and the silver dagger; with two moonstones. ‡

2 **P827**
Eye Of Providence
Pendant
The all-seeing eye of God and the cosmic moon to watch over you. With a blue Swarovski crystal eye. ‡

3 **P832**
Eye Of The Dragon
Necklace
The penetrating stare of a fire-eyed lacertilia of chaos. With a deep red Swarovski crystal eye. ‡

4 **P797**
Maloik:
Sign of The Horns:
Maschio
Pendant
The 'Sign of the Horns' ancient amuletic protection against bad luck and the evil eye and the classic salute in rock cultures.

5 **P796**
Maloik:
Sign of The Horns:
Femmina
Necklace
The 'Sign of the Horns' ancient amuletic protection against bad luck and the evil eye and the classic salute in rock cultures. ‡

6 **P800**
Passio:
Wings Of Love
Pendant
Gothic love; the angel meets the demon and hearts collide; interlinked, two-tone pewter.

7 **P124**
Mediaeval Pentacle
Pendant
In the Middle Ages, the most common sign to ward off demonic powers; gilt two-tone with blue cabochon and Swarovski crystal. ‡

8 **P235**
Dante's Hex
Pendant
Mediaeval style pentagram.

9 **P822**
Talismanik
Necklace
A stunning and powerfully positive talisman of protection. Finished with a polished pewter pentagram.

Model is wearing :
E396 Ouija Planchette earrings,
P827 Eye Of Providence pendant.

Model : **Mahafsoun**
facebook.com/MahafsounArt

‡ Specified crystal colours are subject to availability and may be substituted.

**P759
Lucky In Love**
Necklace

A magical and fortuitous union between the Ace of Hearts and the Ace of Spades. ‡

**ULFP25
Devil Heart
Généreux**
Necklace

Saint or sinner? Love, passion and lustful desire are akin. With translucent red enamelled heart & Swarovski crystal highlights. ‡

Additional Devil Heart ring (page 42), earrings (page 33) & bangle (page 52) are also available.

**ULFP20
Devil Heart**
Pendant

Love is sinful, naughty and oh, so much fun! With translucent red enamelled heart & Swarovski crystal highlights. ‡

**ULFP1
Swallow
Heart**
Necklace

Two tattoo-style swallows holding a red crystal heart; on fine trace chain. ‡

**ULFP19
Black Cherry**
Pendant

The stones within each succulent red cherry are horribly deceptive! With black & red ribbon, enamel & red abalone cabochon. ‡
Matching earrings, page 34.

**P721
The Blood
Rose Heart**
Necklace

A dark romance secretly blossoms from the life blood of a once broken heart; with Swarovski crystals set beneath the red enamel blood. ‡

The understated companion piece to P630 Bed Of Blood Roses, specially designed for everyday wear. Matching earwrap (E329, page 37), ear studs (E332, p.41) & watch (AW22, page 55).

**P816
Cat Sith**
Pendant

Superstition and folklore pervade the mysterious black cat, known in Celtic mythology as the fairy Cat Sith. Black pewter pendant inset with Swarovski Siam crystal eyes. ‡
Cat Sith ear wrap, hair slide & NEW bracelet, can be found on pages 37, 59 & 51.

**P824
Meow At
The Moon**
Necklace

The token of a deep and mystical connection. Black pewter with pearlescent cream enamel.

**P823 ▲
Nocte Amor**
Choker

Wings of the night, guiding the wearer to a dark haven of passion. On a 10mm wide, faux leather choker.

**P817 ▲
Bastet Goddess**
Choker

The Egyptian warrior goddess, protectress and moon goddess. Set with pair of red taxidermal eyes & ear bell adornment. With matching ring R224, p.42.

**P695
The Romance
Of The Black Rose**
Pendant

The most desired and most unattainable bloom known to man - an impossible dream! On 18" chain.



Model is wearing -
P721 The Blood Rose Heart necklace
R134 Betrothal ring

Model : Obsidian Kerttu
facebook.com/ObsidianKerttuOfficial/
Photo : Nevena Mitrovic
instagram.com/nena.mit/

ALCHEMY

England · 1971

† Specified crystal colours are subject to availability and may be substituted.

**P799 ▼
Fibonacci's
Golden Spiral**

Pendant
Decoded by Fibonacci in the Middle Ages for the future exploitation of Dr. von Rosenstein and our Renaissance forefathers.



**P828 ▶
Lunatron**

Pendant
The Victorian moon was a mystery of science, a planet or an alien machine? Featuring brass and bronze plated cogs and one red cabochon.



**P737 ▼
Blast Furnace
Behemoth**

Pendant
A monstrous, though benevolent steam-powered mechanical dragon of frightening proportions, representing the might of industrial progress. ‡ ♦



**P188
Anguistralobe**

Pendant
Working miniature of an C18th instrument to measure the direct path of destiny between specified heavenly bodies; pewter and brass.

**P708
Coeur Du Morteur**

Necklace
The heart and soul of a modern, mechanically minded lover, bearing the colour of their life-blood and the intricate workings of their complex mind; tri-tone pewter with Swarovski crystal. ‡ ♦



**P808
Awaiting
The Eventide**

Pendant
A roosting vamp, silent and motionless, hungrily awaits the dusk.

**P158
Vampyr**

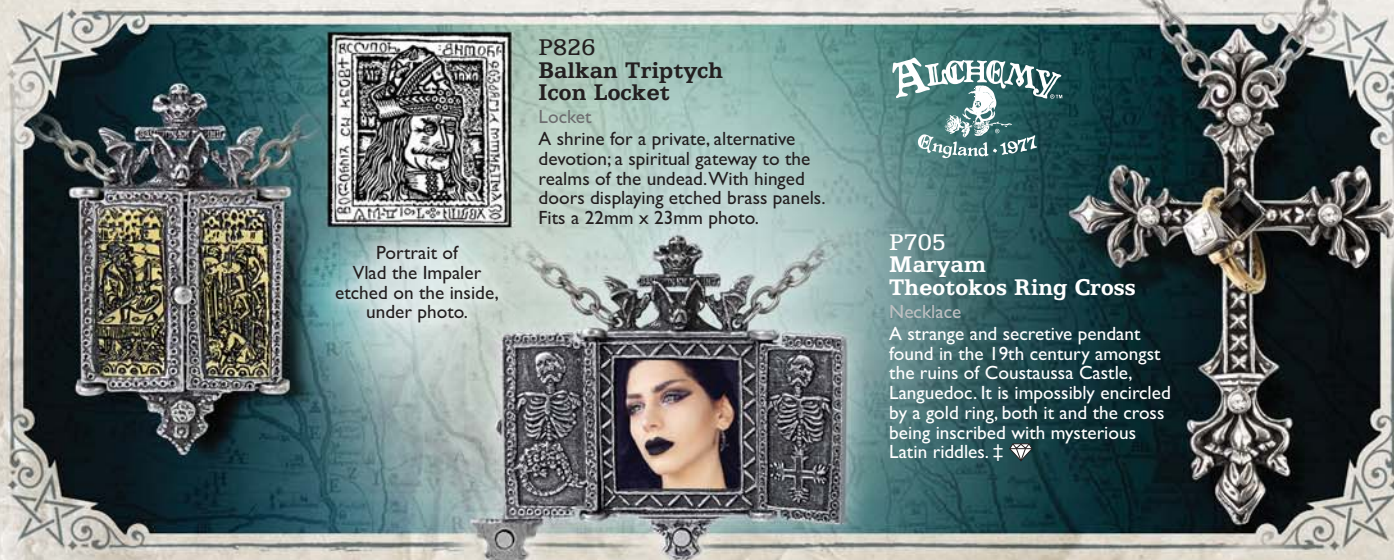
Pendant
Vision of the nocturnal nightmare.

**P597
Om Strygia**

Pendant
A vampire bat of Balkan severity and proportions.

**P600
La Nuit**

Pendant
A crystal luxuriance on the wings of the night; with Swarovski teardrop crystal. ‡ ♦



**P826
Balkan Triptych
Icon Locket**

Locket
A shrine for a private, alternative devotion; a spiritual gateway to the realms of the undead. With hinged doors displaying etched brass panels. Fits a 22mm x 23mm photo.

Portrait of Vlad the Impaler etched on the inside, under photo.



ALCHEMY
England · 1977

**P705
Maryam
Theotokos Ring Cross**

Necklace
A strange and secretive pendant found in the 19th century amongst the ruins of Coustaussa Castle, Languedoc. It is impossibly encircled by a gold ring, both it and the cross being inscribed with mysterious Latin riddles. ‡ ♦





**P609
Diamond Heart**

Pendant
An accursed black dragon, with the heart of a diamond; a metaphor for a dangerous relationship, or else a powerful ally? Set with eleven Swarovski crystals. ‡



**P751
Geistalon**

Pendant
Fear from the darkness - the thundering phantom of an armoured cataphract unicorn.



**P756
Aethera Dragon**

Pendant
The Ether Dragon, pagan guardian of the fifth element also known as 'the spirit'. ‡



**P772
Draig O Gariad**

Necklace
Distilled romance; wild Celtic passion, fought for and guarded with the strength of a dragon; with black enamel & Bermuda blue Swarovski crystals. ‡

**THE
DRAGON'S
LURE**

**P829
Dragon's Lure**

Necklace
A twisting saurian familiar, willing it's confidant to a wayward and dissolute lifestyle. On a continuous snake chain, fastened by a magnetic catch under the dragon's head.

See also Dragon's Lure bangle A124 (p.49).

Magnetic catch fastening. Used on bangle and necklace



‡ Specified crystal colours are subject to availability and may be substituted.



1
P740
Wounded Love



2
P837
Unicorn



LOVE RULES
HIS KINGDOM
WITHOUT A
SWORD



3
P725
Love Is King



4
P746
Blood Heart



5
P781
Claddagh
By Night



6
P700
Bacchanal Rose



7
P773
The Black Swan
Romance



8
P791
Ring O' Roses



9
P630
Bed Of
Blood Roses



Shown here, matching earrings, E398.



NEW
complementary earrings, Passionette, E416.



RING O' ROSES

EXTENDED INFORMATION, VIEWS AND SPECS ARE AVAILABLE ON EVERY ITEM AT:

WWW.ALCHEMYENGLAND.COM

Shown smaller than actual size

‡ Specified crystal colours are subject to availability and may be substituted.

1 P740
Wounded Love

Choker

A barbed and gaping hole is left bleeding, where there was once a dark and mysterious romance; with black acrylic rose on black velvet choker. ‡

Matching earrings, page 34.

2 P837
Unicorn

Pendant

A subtle token of love devotion and strength.

3 P725
Love Is King

Couples Friendship Necklace

A sword through the heart, betokening love conquered and a forever-bond.

The sword withdraws from the Swarovski crystallised heart for the two to be worn separately as tokens of betrothal. The heart is on a 22" black ribbon & the sword, a 21" curb chain.

Alternate views show the two separate necklaces and the romantic quotation engraved on the combined pieces. ‡

4 P746
Blood Heart

Necklace

The female corsair, amorous she-wolf and destroyer of men's hearts; red enamelled heart with two acrylic roses on black ribbon.

5 P781
Claddagh By Night

Choker

Love, Friendship and Loyalty vouchsafed from the underworld; with siam Swarovski heart crystal and on black satin ribbon. ‡

Matching ear studs, ring & bangle (pages 41, 42 & 52)

6 P700
Bacchanal Rose

Necklace

A sumptuous necklace with a romantic motif hiding, or revealing, a secret libertine passion for wine and sensual pleasures; with black acrylic roses & Swarovski crystals. ‡

Companion earrings E347, p.34, ring, p.42 & bracelet A106, p.52.

7 P773
The Black Swan Romance

Necklace

The rarest of all affairs; highly unlikely, impossible to predict and with the most momentous effect.; polished highlighted black pewter with siam Swarovski crystal heart. ‡

8 P791
Ring O' Roses

Necklace

A devotion wreath for an inexplicably dark and mysterious love. ‡

9 P630
Bed Of Blood Roses

Necklace

The heart is the seedbed of tangled emotions and condemned romance; black roses flourish in the heart's blood. Swarovski crystals sparkle from beneath the blood red enamel.

Matching earwrap (E329, p.37), earstuds (E332, p.41) & watch (AW22, p.55). ‡

ALCHEMY
England · 1971

Model is wearing :
P700 Bacchanal Rose necklace.
Model : **Elaine Valerie**

Photo : **Annie Bertram** - www.anniebertram.com

P821
Étendu Mort De Coeur
 Necklace
 Agonisingly expressing the forlorn torment of expired love. Set with four black Swarovski crystals; on a split black satin ribbon. ‡



P765
Villa Diodati
 Necklace
 Flitting through the silent candlelit darkness of the lakeside manor, the creature gives rise to the birth of Dracula.



P193
Black Raven
 Pendant
 In two-tone, blackened pewter with polished mount. The Raven, the C. 20th symbol of the undead; on 27" ball chain.
 Companion earrings page 34 & hair slide, page 59.



P417
Drakonkreuz
 Pendant
 Symbol of the obscure, medieval, mystic order and holders of arcane and ancient magical powers; with Swarovski crystals. ‡

P453
The Chemical Wedding
 Pendant
 The great metaphysical union of opposites; two-tone pewter.

P190
The Lost Soul
 Pendant
 The pitiful tortured remains of a hapless nobody.

P342
Gothic Ankh
 Pendant
 A vampiric hybrid of the Egyptian symbol for eternal life and the stylistic form of High Gothic; Swarovski crystal. ‡



P697 ▲
Ravenine
 Pendant
 The raven, an ancient symbol of protection, information and dark secrets. On 18" chain.

◀ **P447**
Blood Moon
 Pendant
 A skein of bats flitters about this deep and sinister portent.



N182
Speculum
 Neck Thong
 The Latin inscription reads: "All things change and we with them", the inset mirror revealing the horrifying face of the future.



P323
The Whitby Wyrn
 Pendant
 The legendary North Yorkshire servant of the Antichrist rampant.

Shown smaller than actual size

‡ Specified crystal colours are subject to availability and may be substituted.

**P815
Alchemist Amulet**

Pendant

A neatly discreet version of the Alchemist's skull talisman on his 40th Anniversary.



**P780
Hand Of Macbeth**

Pendant

Beware the seduction of ultimate power...
With black onyx cabochon.



Model is wearing :
P821 Étendu Mort De Coeur necklace.

Model & Photography :
Magda Corvinus @magda_corvinus

**P698
Gothic
Devotion Cross**

Necklace

One of the most potent and widely used amulets in the world, the Apostle's Cross. On 18" chain.



**P233
Cult Of Aset**

Pendant

Translucent red enamelled solar disk, horned and throned, of the great Egyptian and universal Goddess.

**P26
The Alchemist**

Pendant

Classic skull of the philosopher; black rose two-tone pewter.



**P58 ▲
Pentagram**

Pendant

Quintessential forces of man.

**◀ P221
Ankh Of The Dead**

Necklace

Vampyre's talisman of eternity, incorporating its secret life-blood blade inside the symbolic scabbard; in antique silver-coloured pewter.



**P598
Kiss The Night**

Pendant

Discreetly tokening the owner's alternative tendencies.



**P183
Nosferatu's Rest**

Pendant

Encapsulated in a smoke glazed pewter coffin, the Prince is viewed in his matinal retreat.

P752
Rabeschadel Kleine
Pendant

A token of the great black bird, famous for it's prophetic powers and capable of foretelling death. With matching ring, page 42.

P793
Gothik Tree Of Death
Pendant

The third incarnation of the World Tree; the reality of mortal finality!

P745
Ravenger
Pendant

The dark and mysterious phantom; black pewter wings with polished ravens skull. See also Ravenger wall mount (V52), page 69.

P801 ▼
Santiago Cross
Pendant

The charge of the 12th century knights, The Order of St. James of the Sword; with hematine cabochon. †

P787 ▼
Entropassio
Necklace

True passion unleashed with the chaotic force of entropy. † ♦

P365 ▼
Crystal Pentagram
Pendant

Swarovski crystal-set, magical star of protection. † ♦

P798
Masque Of The Black Rose
Necklace

A sensual relic from the legendary vampire's ball at Rovine Palace, Wallachia, 1867. † ♦

P397 ▲
Illuminati Cross
Pendant

Rome: The Angels of Bernini steer the sacred path of light through the altars of science; set with Swarovski crystals. With 50mm extender chain. † ♦

Model is wearing :
P798 Masque Of The Black Rose necklace.

Model : **Mahafsoun**
facebook.com/MahafsounArt

♦ Made with -
SWAROVSKI ELEMENTS

Shown smaller than actual size

Model is wearing :
P719 Seraph Of Darkness necklace,
E351 Seraph Of Darkness earrings.

Model : **Catharsis**
@the.catharsis



**P739 ▲
Harbinger**

Pendant
Black: black as a young raven with a black rose, hanging from a black ribbon; be wary of the herald that wears this token! On black satin ribbon with Swarovski dropper. ‡ ✦



**P805 ▲
Red Curse**

Pendant
A powerful Evil Eye amulet to ward-off unmindful, malevolent curses; set with red taxidermal eye.



**P715 ▲
Ruah Vered**

Pendant
The spirit and the 'Breath of Life', entwined with the romantic and sensual rose of faithful love. On a 21" trace chain. See also Ruah Vered earrings, goblet, and NEW Vault wall mount (pages 35, 61 & 62).



**P252 ▲
Wolf**

Pendant
The chilling sound of crying at the moon; black pewter with pearlescent white enamel.



**P501 ▲
Chaosium**

Necklace
A shimmering, metallic hematine cabochon forms the nucleus of this mystery-shrouded symbol of anti-order; the eight arrows of chaos. ‡



**P719
Seraph Of Darkness**

Necklace
The Seraphim, the celestial angels ordained to bestow charity and to protect God's throne. With black oval cabochon and matching Swarovski crystal dropper. On a 20" doubled, split trace chain. ‡ ✦
Shown with matching earrings E351.



**P736
Rabeschadel**

Choker
German for 'raven's skull'; the great black birds are famous for their prophetic powers and as the eyes and ears of Odin. On black silk ribbon for hand-tying. Companion ear studs, ring, wrist strap & buckle also available (see pages 41, 46, 49 & 56).



‡ Specified crystal colours are subject to availability and may be substituted.



P731 ▲ Capitaneus

Neck Thong

Head of the tribe in the ages of darkness, long since lost to the mists of time.



P754 ▲ Skullhammer

Pendant

A deathly interpretation of Mjolnir, the skull-crushing hammer of Thor.



P625 ▲ Dragon Skull

Pendant

Primitive ferocity unleashed.



P809 ▲ Raven Hammer

Pendant

The combined magic of Odin's steadfast servants and Thor's mighty, crushing hammer; contrasting two-tone finish.



P11 ▲ Double Axe

Pendant

Barbarian warlord's professional trade tool.



P338 ▲ Bindrune Hammer

Pendant

Viking Thor's Hammer, with runes commanding energy, courage, virility and conquest.



P774 ▲ Jormungand

Neck Thong

The Norse legend of Jörmungandr, the 'Midgard' or World Serpent is the greatest ouroboros.

Belt buckle & t-shirt and NEW wrist strap also available. See pages 57, 78 & 49.



P728 ▲ Amber Dragon Thorhammer

Pendant

A classic, ornate and highly intricate pagan amulet of power and protection, fit for a high ranking Saxon or Viking leader, set with polished, translucent, 30 million year old amber. On a 21" trace chain. ‡



P788 ▲ Wolf Macht

Pendant

The symbol of power from the wolf's fang is understood by all. With black pewter 'tooth'.



P854 ▲ Alchoboros

Pendant

The greatest oxymoron, the end of eternity! Antique pewter pendant. **N**



P833 ▲ Dark Wolf

Pendant

The ferocity emanated by this feral beast is tangible. Antique pewter pendant on a black curb chain.



VAP2 ▲
Mjollnir
Pendant
Thor's magical war-hammer.



P687 ▲
Helm Of Awe Ravenskull
Neck Thong
This raven's skull has been engraved upon its head with the Icelandic stave symbol, 'Aegishjalmur'.
On black square leather thong.



P696 ▲
Thor's Hammer Amulet
Pendant
An amulet to Thor, to wear for protection, strength, healing and fertility. On 18" chain.



P856 ▲
Tor's Magiska Amulet
Pendant
Thor's hammer, a sickle and a firesteel; everything a Viking needs to survive.
Antique pewter articulated pendant, on split chain. **N**



P835 ▲
Froda's Dragon Tooth
Pendant
A souvenir of a thunderous Scandinavian dragon, engraved with the evil beast's likeness.
Engraved front and back; on black curb chain.



ALCHEMY
England · 1971

Model is wearing -
P774 Jormungand neck thong
ABR5 Norsebraid beard & hair beads

Model: **Thorben**
@her_brother_thorben
Photo: **Silver Pearl Photography**

‡ Specified crystal colours are subject to availability and may be substituted.



**P850 ▲
Einardolk**

Pendant
Viking talisman of self preservation.
Two-tone pewter with black
cabochon 'eye', on black curb
chain **N**



**P831 ▲
Tethered Hex**

Neck Thong
An unequivocally robust and potent
talisman of protection and control.
Polished pewter overlaid with
embedded black waxed cord.



**P789 ▲
Thorsblade**

Pendant
The steel and bronze lightning bolt
of the great Norse storm god, Thor.

Model is wearing -
P850 Einardolk pendant
E168 Pentanoir ear studs

Model: **Dark Wolf**
@Dark.Wolf.Model
Photo: **Les Songes De Lilou**
@Les.Songes.De.Lilou

EXTENDED INFORMATION, VIEWS AND
SPCS ARE AVAILABLE ON EVERY ITEM AT:



P709 ▲ Satan's Key To Hell
Pendant

The master of evil and temptation seduces you into the ways of sin, with unfettered access through the gates of The Underworld.



P730 ▲ Bushido
Pendant

The seven virtues of the Samurai warrior, engraved down the length of the Katana's blade.



P686 ▲ Black Trinity Trident
Neck Thong

The three-pronged fork of the demons, signifying the wearer's intent to cast darkness over all before him.



P618 ▲ Osbourne's Cross
Pendant

Sign of a priest of darkness; with black enamel.



P146 ▲ Chaostar
Pendant

The compass symbolising the virtues of Chaos.



P617 ▲ Black Knight's Cross
Pendant

Awarded for dastardly deeds; with trans black enamel, on black curb chain.



P296 ▲ Reaper's Arms
Pendant

Harvester of Sorrow and the badge of fate.



P775 ▲ Black Star
Pendant

Supernatural forces leech from the Stygian pentacle; with black enamel. Coordinating earrings E395, page 35.



P750 ▲ Shred Attack
Pendant

The quintessential metal axe.



ULP9 ▲ Tattoo Gun
Pendant

Fully 3-dimensional 2-tone tattoo gun. With engraved, copper-plated scroll on antique silver finish chain.



ULP46 ▲ Triggerhead
Pendant

When the head rules the heart, and the heart is black...



EARRINGS

Model is wearing -

P792 Affaire du Coeur pendant

E414 Affaire du Coeur earring droppers

Model: **Mahafsoun**

[facebook.com/MahafsounArt](https://www.facebook.com/MahafsounArt)



For more information behind Alchemy's arcana of subjects, relating to products, symbols, designs and very much more, see "Further Information" on page 3.

All earrings are cast and hand-made in fine English pewter many with additional high quality crystals, Swarovski Elements and other components. Ear-wires are silver plated and fully compliant; Studs have surgical steel posts and plastic scroll backs.

Earrings are sold singly unless indicated in pairs.

Visit our website:

www.alchemyengland.com

for additional views of all Earrings.

◆ Made with - SWAROVSKI ELEMENTS

‡ Specified crystal colours are subject to availability and may be substituted.



E420 Regiis Martyris
Stud Earrings (pair)
Regiis Martyris - The Nine Days Queen. The lost earrings from the jewellery of Lady Jane Grey. **N** ‡ ✦
With Swarovski amethyst & silvernight crystals. To match pendant, P863, p.6.



E415 Night Queen
Stud Earrings (pair)
A touch of Regency decadence and sophisticated wickedness. **N** ‡ ✦
With Swarovski crystals. To match pendant, P503, page 14.



E416 Passionette
Dropper Earrings (pair)
The tortuous thorns of self sacrifice bleed with Swarovski crystal tears. **N** ‡ ✦
With complementary earwrap, E287 & bangle A80, pages 37 & 52.



E414 Affaire du Coeur
Dropper Earrings (pair)
The flanking skulls betray a dark and Delphic romance. **N** ‡ ✦
With translucent deep blue enamel & Swarovski jet crystals. To match pendant, P792, page 16.



E409 Kraken
Stud Earrings (pair)
The monster's writhing tentacle holds its exotically subterranean gem. With volcano effect Swarovski dropper. ‡ ✦
To match pendant P818, page 13; earwrap E309, page 39 & ring R221, page 42.



ULFE22 Devil Heart
Stud Earrings (pair)
Love, is sinful, naughty and oh, so much fun! With translucent red enamelled heart & Swarovski crystal highlights. ‡ ✦
Matching necklace & pendant, page 18, ring, page 42 & bangle, page 52.



E378 Hand Of Macbeth
Dropper Earrings (pair)
Beware the seduction of ultimate power...With Swarovski jet hematite crystals. ‡ ✦



E272 Bleeding Heart
Stud Earrings (pair)
Dripping with bloody Swarovski crystals, betraying the emotional grief inside. ‡ ✦



E398 Ring O' Roses
Dropper Earrings (pair)
Remnants of a wreath of rare qualities, intoning dark and mysterious love. With black pewter roses & Swarovski crystals. ‡ ✦
To match pendant, P791, page 22.



E380 My Soul From The Shadow
Stud Earrings (pair)
Alchemy's rendition of Edgar Allan Poe's 1845 masterpiece, The Raven. With Swarovski jet crystals. ‡ ✦
With matching pendant P767, page 16.



E286 Bestia Regalis
Stud Earrings (pair)
Dramatically elegant regal beasts, articulated to attract enviable attention; with Emerald Swarovski crystals. ‡ ✦



E351 Seraph Of Darkness
Stud Earrings (pair)
The Seraphim, the celestial angels ordained to bestow charity and to protect God's throne. Black oval cabochon, with a matching Swarovski crystal dropper. Matching necklace page 27. ‡ ✦



**ULFE20
Black Cherry**
Stud Earrings (pair)
The stones within each succulent red cherry are horribly deceptive! Pewter & 2 colour enamel earrings. Companion necklace, page 18.



**E333
Black Raven**
Dropper Earrings (pair)
Dark and sultry companions make sure your admirers do not underestimate your character. Companion pendant, page 24 & hair slide, page 59.



**E365
Wounded Love**
Stud Earrings (pair)
A gaping hole is left where there was once a dark and mysterious romance; black pewter rose stud with heart dropper. See page 22 for matching choker P740.



**E346
Elizabethan**
Stud Earrings (pair)
A symbol of a condemned and secret love from the age of Shakespeare. With suspended Swarovski amethyst heart crystals. Companion ring (page 42) & bracelet (page 51). ‡



**E364
Deadskull**
Dropper Earrings (pair)
The desiccated remains of a former human being; pewter skulls suspended by fine chain.



**E363
Sorrow Cross**
Dropper Earrings (pair)
The black cross urdee of abject mourning; black enamel cross with fine black chain.



**E372
Ankh Of Osiris**
Dropper Earrings (pair)
The Egyptian god Osiris, bequeaths the 'Breath Of Life' upon those to be blessed with immortality. ‡



**ULFE15
El Corazon**
Stud Earrings (pair)
Flight of the heart; pewter winged earrings carry blue heart Swarovski crystal droppers. ‡



**E9
Skeleton**
Dropper Earrings (pair)
It all comes down to this. The last remains of master and slave alike.



**E373
Awaiting The Eventide**
Dropper Earrings (pair)
Roosting vamps, silent and motionless, await the final vestige of light - so, the raptors may play...



**E377
Clavitractation**
Dropper Earrings (pair)
The archetypal reflection of steampunk ethos; copper-plated.



**E397
Glistercreeper**
Dropper Earrings (pair)
Petritified exoskeleton of a grotesquely repellent arthropod. ‡
To match P790 pendant, page 15.



**E347
Bacchanal Rose**
Stud Earrings (pair)
A romantic motif concealing a secret libertine passion for wine and sensual pleasures; with black acrylic roses & Swarovski crystals. ‡
Matching necklace p.22, ring p.42 and bracelet p.52.



**E403
The Sophia Serpent**
Stud Earrings (pair)
The Ouroboros, ancient Gnostic symbol of eternity, rebirth and unity. Set with Swarovski crystal eyes. ‡
Also see The Sophia Serpent ring & bangle, pages 44 & 51 & NEW necklace P853, page 7.



**E367
Wings Of Eternity**
Stud Earrings (pair)
From the symbol of everlasting life and love, the delicate Baroque-laced wings drip with Swarovski crystal promise. ‡



**E310
Marie Antoinette**
Stud Earrings (pair)
Miniature guillotine blades, bearing the last traces of aristocratic life; with Swarovski Siam crystals. ‡



**E402
Ruah Vered**

Dropper Earrings (pair)

The spirit and the 'Breath of Life', entwined with the romantic and sensual rose of faithful love.

Matching pendant, page 27, goblet, page 61 and NEW Vault wall mount, page 62.



**E396
Ouija Planchette**

Stud Earrings (pair)

The spiritualist's device for communicating with the dead... ICU! Set with a realistic taxidermal eye. See matching pendant (page 7); ring (page 44) & bangle (page 51).



**E395
Black Star**

Dropper Earrings (pair)

Supernatural forces leech from the Stygian pentacle.

Matching pendant, P775, page 31.



**E350
Empyrean Eye:
Tears From Heaven**

Stud Earrings (pair)

The eye of God, shedding tears of grief for humanity as he regards the world from the highest firmament. With striking 'Aurore Boreale' Swarovski crystals. ‡ ❄️ Matching pendant - P712, (p.14).



Model is wearing -
E395 Black Star dropper earrings
P715 Ruah Vered pendant
P775 Black Star pendant

Model : **Obsidian Kerttu**
facebook.com/ObsidianKerttuOfficial/
Photo : **Nevena Mitrovic**
instagram.com/nena.mit/



EAR-WRAPPS



Created and developed by Alchemy from 2006, 'stud ear wraps' are a unique concept which decorate the whole ear, wrapping around it and fixing in place with a regular surgical lobe-stud.

It is critical that the wrap can be formed to fit the ear properly, as no two ears are alike in size or shape. Alchemy's ear wraps are made of English pewter which is perfect for gently bending into shape. Cheap imitations will usually not bend, but snap, or are too heavy for comfort.

Visit our website www.alchemyengland.com for additional views of all Ear Wraps.



For more information behind Alchemy's arcana of subjects, relating to products, symbols, designs and very much more, see "Further Information" on page 3.

Model is wearing :

E274R Dragon's Lure ear wrap

P829 Dragon's Lure necklace

A124 Dragon's Lure hinged bangle

Model : **Mahafsoun**

[facebook.com/MahafsounArt](https://www.facebook.com/MahafsounArt)





**E329 ▶
Bed Of Blood Roses**

Stud Ear-Wrap (left)

The poetic tragedy of a bleeding heart; with black roses and Swarovski crystals below the enamelled heart. ‡ ✦

Matching necklaces pages 18 & 22, earstuds page 41, & watch page 55.



**◀ E287
Passion**

Faux Stretcher Ear-Wrap (left)

A bramble of thorns entangles the ear, weeping tears of Swarovski crystal blood. ‡ ✦

See page 33 for NEW coordinating earrings, and page 52 for matching bracelet.



**E410
Wild Black Rose**

Stud Ear-Wrap (left)

The rose of black romance will entrap its hearts desire and seduce them. With large black acrylic rose. NEW matching items also available; bracelet A125 (p.51) & hair slide HH12 (p.59).

**E404
Cat Sith**

Stud Ear-Wrap (right)



Superstition and folklore pervade the mysterious black cat, known in Celtic mythology as the fairy Cat Sith. Cat Sith pendant, hair slide & NEW bracelet are also available. See pages 18, 59 & 51.

**E392
Nocti-Dame**

Stud Ear-Wrap (left)



A black and demonic gargoylian companion. ‡ ✦

**E419
Fire Lizard**

Stud Ear-Wrap (left)



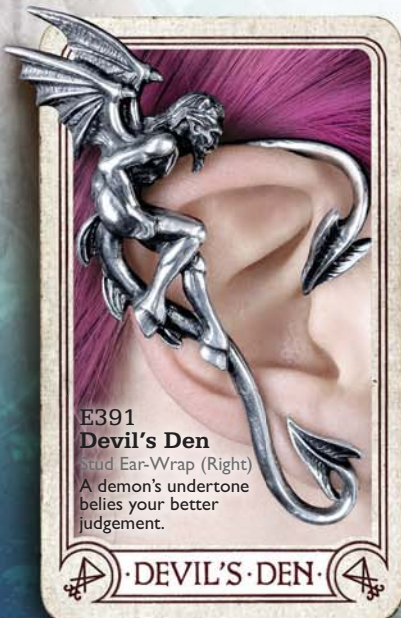
The ubiquitous companion of a practicing alchemist - the spirit of elemental fire. **N**

**E355
Raven Ear-Wing**

Stud Ear-Wrap (left)



Ready to impart its supernatural intelligence to its master, the black raven raffishly embraces the ear of its owner. Fastened by a surgical steel ear-post.



**E391
Devil's Den**
Stud Ear-Wrap (Right)
A demon's undertone belies your better judgement.

♠ · DEVIL'S DEN · ♠

**E389 ▶
Fairy Grove**

Stud Ear-Wrap (left)

A whispering fairy familiar, your constant friend and benevolent guide.



♠ · FAIRY GROVE · ♠

**E387 ▶
Icarus**

Stud Ear-Wrap (left)

"True hope is swift, and flies with swallow's wings" as Shakespeare submits.



♠ · ICARUS · ♠

‡ Specified crystal colours are subject to availability and may be substituted.



E376 ▲
A Night With Goethe

Stud Ear-Wrap (left)

Nocturnal stirrings, returning from the grave in search of a lost lover, the creature roams.



E330 ►
Crystal Dragon

Faux Stretcher Ear-Wrap (right)

With dramatically outstretched wings, the writhing dragon flaunts its Swarovski crystal dropper. ‡ ♦

E412 ▼
Ostrogoth Dragon

Stud Ear-Wrap (right)

The saw-backed, spine-faced 'raptilion', a long feared monster of dark legend.



46

KODAK VPS 6006

Model is wearing -
E412 Ostrogoth Dragon ear wrap
P832 Eye Of The Dragon necklace
Model : [Elisanth - www.elisanth.com](http://www.elisanth.com)
Photo : [Zatsepin Alex - www.zatsepin-alex.com](http://www.zatsepin-alex.com)

EXTENDED INFORMATION, VIEWS AND SPECS ARE AVAILABLE ON EVERY ITEM AT: WWW.ALCHEMYENGLAND.COM

Made with -
SWAROVSKI ELEMENTS

‡ Specified crystal colours are subject to availability and may be substituted.



ARBOREUS

ELF EAR WRAPS

◀ **E390R & E390L**
Arboreus
 Stud Ear-Wrap (right & left)
 An elf's ear of swirling Victorian, verdant flourishes. Available in both right & left ear versions.

Model is wearing : **E390R** Arboreus Ear Wrap

Model : **Melanie K** Photo : **Travis Lilley**
[instagram.com/frankensteins_cat/](https://www.instagram.com/frankensteins_cat/) [instagram.com/travislilleyphoto/](https://www.instagram.com/travislilleyphoto/)

E309
Kraken
 Faux Stretcher Ear-Wrap (left)



Enveloped by overwhelmingly powerful and limber tentacles from the deep.
 See matching necklace (page 13) earrings (page 33) & ring (page 42).

E361
Osberg Dragon
 Stud Ear-Wrap (left)



Inspired by the intricate, Norse Art wood carving decorating the great, 9th century Viking ship discovered beneath a burial mound in Norway.

E276
Rose Of Passion
 Faux Stretcher Ear-Wrap (left)



'The unattainable black rose bleeds for what cannot be'; unique black pewter finish, studded with Swarovski white & 'blood drop' crystals. † ♡

E418
Moonskull
 Stud Ear-Wrap (left)



Dark spirits may conceal themselves as the Man in The Moon. **N**



1
E274R

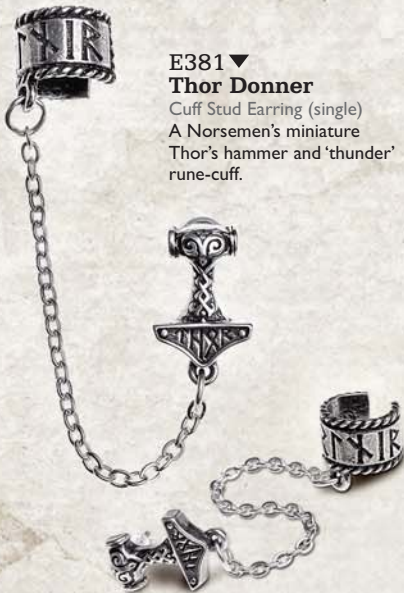
2
E274B

3
E274L

- E274R**
The Dragon's Lure
 Faux Stretcher Ear-Wrap (right)
 Like a whispering shoulder devil, or a witch's familiar, this dragon, piercing through the earlobe, tempts the wearer into acts of shameful depravity.
- E274B**
Dragon's Lure Black
 Faux Stretcher Ear-Wrap (right)
 Noir version of the now immortal dragon wrap.
- E274L**
Dragon's Lure Left
 Faux Stretcher Ear-Wrap (left)
 A matching, left-ear version of the infamous dragon wrap.

Shown smaller than actual size

CUFF STUDS

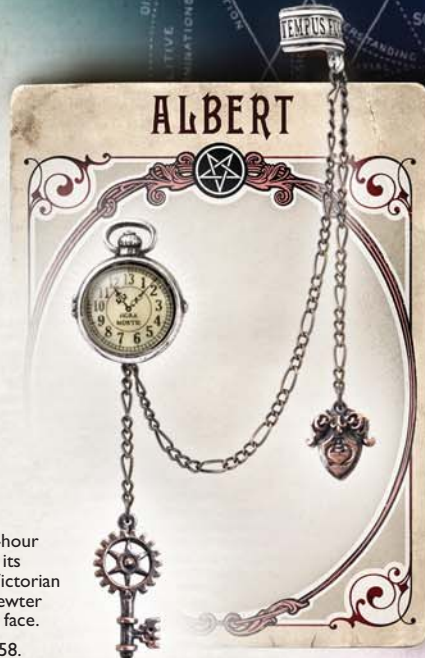


E381 ▼ Thor Donner
Cuff Stud Earring (single)
A Norsemen's miniature Thor's hammer and 'thunder' rune-cuff.



E382 Rosa Nocta
Cuff Stud Earring (single)
Conjuring the amorous magical properties of a combined pentagram and a black rose.

E349 ▶ Uncle Albert's Timepiece
Cuff Stud Earring (single)
The perfect miniature, 13-hour Lunar time fob watch and its accoutrements from the Victorian era; two-tone copper & pewter with glass imitation watch face.
Matching cuff links - page 58.



FAUX EAR STRETCHERS



E280 ▲ Impalare Cross
Faux Stretcher (single)
Pierced by the enduring symbol of sacrifice; black-enamelled cross piercing the earlobe, with surgical steel post.



E356 ▲ Magic Ram's Horn
Faux Stretcher (single)
Intoned with outrageous Crowleyan symbolism and ritual Pagan intent.



E324 ▲ Tor Dragon
Faux Stretcher (single)
8mm spine'd tail with dragon's head end.



E320 ▲ Tomb Skull Horn
Faux Stretcher (single)
7mm curved horn with plain skull end.



E257 ▲ Cesare's Veto
Faux Stretcher (single)
The Cesare Borgia's Florentine solution to all political problems. With Swarovski crystal. ‡

SINGLE EARRINGS



E393 ▼ Rosemoon
Faux Stretcher (single)
Combining the spiritual energies of the crescent moon, the female principle and the rose of the love goddess, Venus. ‡



E256 ▲ Hang Man's Noose
Single Stud Earring
The most squalid and degrading of ends to the life of a mortal.



E357 ▲ Bushido
Single Dropper
The seven virtues of the samurai warrior, engraved down the length of the katana's blade.



E408 ▲ Voodoo Doll
Single Stud Earring
A traditional Folk Magic protection against a witch's power. With black cord noose and black cabochon.
Matching pendant P769, page 4.

STUD PAIRS

E394 ▲

Viennese Nights

Stud Earrings (pair)
Creatures of the night in Europe's fabulous den of iniquity. ‡ ✦
Matching necklace (page 13) & bracelet (page 52).



E401 ▲

Triple Goddess

Stud Earrings (pair)
The pearly full moon, invoking healing, occult protection and wealth. ‡
Matching choker (page 7) & ring (page 42).



E168 Pentanoir

Stud Earrings (pair)
Hand polished pentagram noir studs with black enamel fill.



E252 ▲ Matins

Stud Earrings (pair)
The name of the night prayer service in the Roman Catholic and Eastern Orthodox churches and the time when bats are out to play! ‡ ✦



E164 ▲ Pentagram Studs

Stud Earrings (pair)
Miniature pentagrams for magical discretion.



E417 ▲ Sickle Moon

Stud Earrings (pair)
For secret moon-worshippers, love goddesses and Wiccans alike. **N**



E353 ▲ Industrilobe

Stud Earrings (Pair)
The quintessential cogwheel, personifying dynamic industrial and intellectual progress.



E359 ▲ Rabeschadel

Stud Earrings (pair)
The great black bird, famous for its prophetic powers, being Odin's messengers and capable of foretelling death.



E384 ▲ Thor Hammer Studs

Stud Earrings (pair)
A Norseman jewel-smith's precision, miniature Thor's hammer.



E339 ▲ Black Rose Studs

Stud Earrings (pair)
The alchemical mystery personified by this impossibly rare flower. Matches E329, or E276 ear-wraps.



E411 ▲ Unicorn

Stud Earrings (pair)
The fabled beast of antiquity and symbol of love and faithfulness. Can be paired with P751 Geistalton pendant, or P837 Unicorn pendant.



E186 ▲ Batstuds

Stud Earrings (pair)
Discreet aural accents for the nocturnal hunter.



E342 ▲ Mortuarium

Stud Earrings (pair)
Skulls, staring deeply into the oblivion of a long-past mortal existence.



E76 ▲ Death Studs

Stud Earrings (pair)
Miniature pewter skull studs, for the discreet fatalist.



E147 ▲ Alchemist Studs

Stud Earrings (pair)
Miniature Alchemist skulls for Acolytes incognito.



E406 ▲ Sacred Cat

Stud Earrings (pair)
A likeness of the Egyptian black cat warrior and protectress. Matching Vault items V78 trinket box & V64 hand mirror (p71 & p72). ‡ ✦



E332 ▲ Heart's Blood

Stud Earrings (pair)
Swarovski crystals glitter just under the surface of the clear, blood red enamel. (To match E329 earwrap). ‡ ✦



ULFE4 ▲ Swallows

Stud Earrings (pair)
A pair of tattoo style swallow stud earrings.



E379 ▲ Claddagh Heart

Stud Earrings (pair)
Love and Loyalty from the 17th century, traditional Irish symbol; set with Swarovski Siam heart crystal. ‡ ✦





**R227
Blood Rose**

Ring
The blood red crystal from the ring of a disgraced cardinal, re-set into a virtuous nest of roses. Large Swarovski Siam crystal.
(Sizes: N, Q, T, W) ‡ †



**R229
Principia Alchemystica**
Ring
A talismanic, magic band for the achievement of the the alchemist's greatest work. With etched black onyx disc.
(Sizes: Q, T, W, Y) N



**R228
Psalm 68**
Ring
"Let God arise and His enemies be scattered"; the serpent of the underworld. Set with Emerald Swarovski teardrop crystal.
Adjustable Sizes:
L - N, (Small), Q - T, (Med) N ‡ †



**R223
Bacchanal Rose**
Ring
A romantic motif concealing a secret libertine passion. Set with two Swarovski crystals and black acrylic rose.
(Sizes : L, N, Q, T) ‡ †
Companion items; necklace, earrings & bracelet are also available. (See pages 22, 34 & 52).



**R216
Stealth**
Ring
Under the cloak of night, the bat crawls towards its intended prey.
(Sizes: N, Q, T, W, Y)



**R224
Bastet Goddess**
Ring
The perfect feline fantasy; the Egyptian cat warrior goddess of sexuality and the moon. With Swarovski crystal eyes.
(Sizes : L, N, Q, T) ‡ †
See also p.18 for matching Bastet Goddess choker, P817.



**R222
Emerald Venom**
Ring
The deadly predator is quiescent, poised to strike when it may sate its desire. With Swarovski Olivine crystal body.
(Sizes : L, N, Q, T) ‡ †
Striking companion necklace p.14 (P432).



**R134
Betrothal**
Ring
A miniature rococo masterpiece of romantic metaphor, with the blood red enameled heart of passion. (Sizes: L, N, Q, T, W)



**R156
Elizabethan**
Ring
Lord Dudley's lost sign of devotion; Swarovski crystal.
(Sizes: L, N, Q) ‡ †
See also earrings, page 34; bracelet, page 51.



**R210
Claddagh By Night**
Ring
Love, Friendship and Loyalty vouchsafed from the underworld; with Siam Swarovski heart crystal.
(Sizes: L, N, Q, T) ‡ †
See also choker, page 22; earstuds, page 41 & bracelet, page 52.



**R219
Triple Goddess**
Ring
The pearly full moon between waxing and waning crescents, invoking healing, occult protection and wealth. With mother-of-pearl cabochon.
(Sizes: L, N, Q, T) ‡ †
Triple Goddess range includes matching choker, page 7 & earstuds, page 41.



**R220
Rabeschadel Kleiner**
Ring
The sinister black bird, famous as Odin's messengers and for their prophetic powers and foretelling death. (Sizes: L, N, Q, T, W, Y)
Matching pendant, page 26.



**ULFR6
Devil Heart**
Ring
Love, is sinful, naughty and oh, so much fun! With translucent red enameled heart & Swarovski crystal highlights.
(Sizes: N, Q, T) ‡ †
See companion necklace & pendant, page 18, earrings, page 33 & bangle page 52.



**R221
Kraken**
Ring
Evil from the deep, tightening its grip about your finger.
(Sizes: N, Q, T, W, Y)
Companion Kraken items available; necklace, (p.13), earwrap, (p.39) & earrings (p.33)



**R214
Cherish**
Ring
A secret tribute, never to forget the lost, forbidden and dark love known only to you.
(Sizes: L, N, Q, T) ‡ †

RINGS



Alchemy Rings are hand cast & made in England from fine English pewter and in many cases including Swarovski Elements, other high quality crystals and additional high quality materials and finishes.

Visit our website www.alchemyengland.com for alternate views of all Rings.



For more information behind Alchemy's arcana of subjects, relating to products, symbols, designs and very much more, see "Further Information" on page 3.



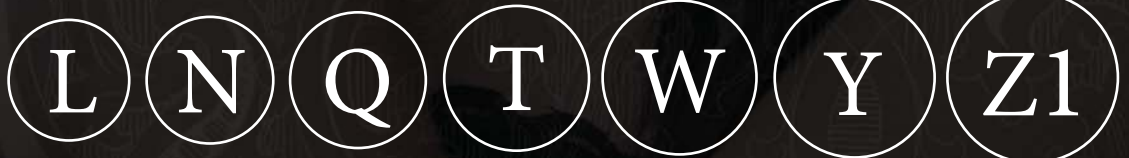
INTERNATIONAL SIZE GUIDE

English:	L	N	Q	T	W	Y	Z1
American:	6	7	8½	9½	11	12	13
European:	12	15	18½	21	23	27	28
German:	1.7	1.8	1.9	2.0	2.1	2.2	2.3
Japanese:	10	13	16	19	23	25	27

Alchemy's rings are available in various sizes. The sizes stated are intended as a guide only, and are **NOT** always strictly accurate.

DIAMETER RING GAUGE

To gauge your ring size using the circular guide, place a suitably sized existing ring over the size indicators here and choose the closest size to the inner circle.



LINEAR RING GAUGE

To gauge your ring size using the linear guide, wrap a 5mm wide X 10cm long (approx.) strip of paper around the required finger and mark the point of overlap with a pencil. Then lay flat against this linear guide.

Z1 Y W T Q N L



Linear Ring Gauge ←



Model is wearing -
 R219 Triple Goddess ring
 R223 Bacchanal Rose ring
 P823 Nocte Amor choker
 Model: **Dragonfly**
[facebook.com/GuiDragonfly](https://www.facebook.com/GuiDragonfly)

R209
Sub Rosa Poison Ring
Poison Ring



Beneath the rose, (a symbol of secrecy), there may lie a fatal draught of toxin; with hinged lid to secret compartment & Swarovski crystals.
(Sizes: L, N, Q, T) ‡

R208
Memoria Mortalis

Ring
In memory of death, as our forebears so readily observed, with its constant threat to all, pervading every facet of life.
(Sizes: N, Q, T, W)



R23
Roseus Pentagram

Ring
A classic black enamelled pentagram, highly polished and flanked with Alchemical roses of wisdom.
(Sizes: N, Q, T, W, Y)



R124
Angel's Eye

Ring
His deep, sapphire crystal eye is engraved with the pentagram from the seal of the archangel Metatron. (Sizes: L, N, Q, T, W) ‡



R190
Starchaser

Handsapan Ring
Gliding gracefully between the clouds, the fantastical creature flies to catch the stars from the sky. Adjustable split ring, partly spanning three fingers.

Adjustable Sizes:
L - N, (Small), Q - T, (Med) ‡



R215
Ouija Eye

Ring
Seeing into the past, the present and the future with the unsettling guidance of the spirit board.
(Sizes: Q, T, W)

Companion pendant, page 7; earrings, page 35 & bangle, page 51.



R120
Absinthe Fairy Spirit Crystal

Ring
A Swarovski emerald pond of illusion and creation.
(Sizes: L, N, Q, T,) ‡



R44
Dr. Von Rosenstein's Induction Principle Ring

Ring
In pewter and solid brass, an authentic reproduction of Dr. Von Rosenstein's indispensable key to the induction matrix.
(Sizes: N, Q, T, W, Y)



R72
Caput Mortem

Ring
Three deaths for the auspicious; one death's head for each mortal life. (Sizes: N, Q, T, W)



R71
Agla

Ring
Five magical talismans of profit and protection. The central Kabbalistic sigillum "Agla", stands for 'Thou art mighty forever O Lord', with the remaining four seals for love, memory, safety and peace. (Sizes: N, Q, T, W)



R36
Great Wish Ring

Ring
The Latin inscription 'MEUS OPUS MAGNUS' is the Alchemical spiritual wish for 'The complete fulfilment of life'.
(Sizes: N, Q, T)



R205
Black Consort

Handsapan Ring
The majestic raven, wings outstretched, gliding alongside its adopted squire offering protection and guidance.
(Sizes: N, Q, T, W)
Matching wriststrap, page 52.



R183
Vis Viva

Ring
The living power; overwhelming energy and the force of life encircles and liberates the wearer; with Swarovski crystals. ‡
See companion bracelet, page 52.
Adjustable Sizes: Small (L - N), Med (Q - T) & Large (W - Y)



R206
The Sophia Serpent

Ring
The Ouroboros, ancient Gnostic symbol of eternity, rebirth and the unity of everything, representing the sun and soul of the world.
(Sizes: L, N, Q, T, W, Y) ‡
Matching earrings, page 34, bangle, page 51 & NEW necklace P853, page 7.





**R212
Demon Black &
Angel White**

Promise Ring

On each ring are inscribed seven magical signatures; one of angels, the other of 'demons'. Summon the assistance of the spirits!

Unique split ring in contrasting light & dark finishes. (Sizes: N, Q, T, W)



PROMISE RINGS



**R226
Twin Heart
Promise Ring**

Promise Ring

Two halves of the same heart with the ardent, Latin promise of eternal bondage. Unique double ring with contrasting light & dark finishes and crystals. †

(Sizes: N, Q, T, W)



Model is wearing -
R226 Twin Heart Promise ring
R212 Demon Black & Angel White
double ring
R23 Roseus Pentagram ring
Model : **Mahafsoun**
facebook.com/MahafsounArt



R201 Rabeschadel

Ring
An authentically detailed raven's skull, in polished pewter and set upon a split ring shank. (Sizes: Q, T, W, Y)



R195 Viking Virility Runering

Ring
The two bindrunes are made from Uruz and Teiwaz, for the fighting strength of a warrior, and Inguz and Gebo for a virile union and partnership. (Sizes: Q, T, W, Y, Z1)



R171 Thor's Runehammer

Ring
With runes for 'Blood' & 'Thunder'. (Sizes: Q, T, W, Y, Z1)



R50 Celtic Theurgy

Ring
Supernatural powers of the pentagram under Celtic influence. (Sizes: N, Q, T, W)



R6 Death Ring

Ring
The famous blank, stark expression of the face of death. (Sizes: N, Q, T, W, Y)



R173 Runeband

Ring
Nordic runes recite the mantra, 'Poetry is in Battle'. (Sizes: Q, T, W, Y, Z1)



R174 Ruination Skull

Ring
Defiance on the face of death. (Sizes: Q, T, W, Y, Z1)



Model is wearing -

- P856 Tor's Magiska Amulet pendant.
- R171 Thor's Runehammer ring.
- R173 Runeband ring.
- A120 Wenig Thunderhammer wrist strap.

Model: **Dark Wolf**

@Dark.Wolf.Model

Photo: **Les Songes De Lilou**

@Les.Songes.De.Lilou

EXTENDED INFORMATION, VIEWS AND SPECS ARE AVAILABLE ON EVERY ITEM AT:

WWW.ALCHEMYENGLAND.COM

ARMWEAR



Alchemy's Armwear items are all hand cast in Fine English Pewter, many with additional high quality crystals, Swarovski Elements and other components.

Leather Wriststraps feature English pewter castings on fine Italian Leather in one adjustable size.

For more information behind Alchemy's arcana of subjects, relating to products, symbols, designs and very much more, see "Further Information" on page 3.

Visit our website www.alchemyengland.com for additional views of all Armwear.



A102
Gears of Aiwass

Wriststrap
Aleister Crowley's incorporeal intelligence and dictator of his transcribed and ultra-complex, sacred text, 'The Book of the Law'. On adjustable leather strap.



A120
Wenig Thunderhammer

Wriststrap
Mjolnir, the Norse god Thor's mighty weapon of utter destruction. A small, antiqued pewter copy of Thunderhammer riveted to a 3/4" wide black leather wrist strap.



ULA7
Carpe Diem

Wriststrap
Classic tattoo skull, dagger, roses & scroll wriststrap, bearing the eternal Latin legend "Carpe Diem"-"Seize The Day". One size Adj.



A115
Cthulhu Rising

Wriststrap
The giant god Cthulhu returns from the dead.



A85
Pentagratiion

Wriststrap
Magically intoned icon of power. On adjustable leather strap.



A98
Thunderhammer

Wriststrap
The Norse god Thor's mighty weapon of utter destruction, Mjolnir. On adjustable leather strap.



▲ ULA1
Ace Of Dead Spades

Wriststrap
Italian leather wriststrap with pewter & black-enamelled ace of spades plate, including raised, sculpted death's head. On adjustable leather strap.

Model is wearing -

P854 Alchoboros pendant,
A128 Jormungand wrist strap,
R50 Celtic Theurgy ring,
R173 Runeband ring.

Model: **Dark Wolf**
@Dark.Wolf.Model
Photo: **Les Songes De Lilou**
@Les.Songes.De.Lilou

**A107 ▼
Thunder Torque**

Bangle
This lordly, iconic torque bangle must be that of a Scandinavian or Saxon pagan noble, won, almost inevitably, by force. Copper-plated finial ends with inset hematite cabochons.

Sizes: Small & Large. † *



**A118 ▼
Portative Spectrostat**

Wriststrap
A condensed version of the early scientific instrument for controlling moonlight wavelength emulations; on matt brown leather strap, with antiqued pewter and etched brass. One size Adj.



**A100 ▶
The Black Baron
Technician's
Wingstrap**

Wriststrap
A rare and wondrous legacy from the famed hero of early, roaring skies; 2-tone pewter on dark brown, leather strap. One size Adj.

EXTENDED INFORMATION, VIEWS AND
SPECS ARE AVAILABLE ON EVERY ITEM AT:

**A124 ▶
Dragon's Lure**

Hinged Bangle
The lacertilian seducer wraps around your wrist to impel a new direction upon your will. A hinged bracelet securely fastened with a magnetic catch and a brass safety chain.
Size: Small (approx 7", 178mm inner circumference)
See also Dragon's Lure necklace P829 (p.21).



**▲ A15
Spectrostatic
Nocturnium**

Bangle
Early scientific instrumental band for controlling moonlight wavelength emulations; in antiqued pewter and solid brass.
Shown with side view highlighting Final Detail. Size: Medium Adj. ✳



**A103 ▲
No Man's Land**

Wrist Chain
Emerging from the bottomless mud and gore of the fields of Passchendaele, the ruins of humanity and war blossom.
Sizes: Small & Large.



**A37 ▲
Pentagram Gaelic Strap**

Wriststrap
Hand plaited, black leather wristband with pewter pentagram button-fastening.
On adjustable leather strap.

**A105 ▶
Rabeschadel
Wriststrap**

Wriststrap
The great black bird is famous for it's prophetic powers, being Odin's messengers and capable of foretelling death.
On adjustable leather strap.
More Rabeschadel items, pages 27 (choker), 41 (ear studs), 46 (ring) & 56 (buckle).



**▲ A93
Killing Fields**

Wrist Chain
Assembled from the sobering detritus of all-out war.
Sizes: Small & Large.



**A29 ▲
Vertebrae**

Hinged Bangle
The metallised spine of a vanquished predator, forms this hinged, articulated bangle; with safety chain. Size: Medium Adj.



**A123
Maelstrom**

Leather Wriststrap
The frenzied roiling of a ravaging spiniferous creature. Features a polished pewter dragon on 20mm wide black leather strap.



**A128
Jormungand**

Leather Wriststrap
Jormungandr, the name of the greatest ouroboros, the Norse legend of the 'Midgard' or World Serpent. On adjustable split leather strap. **N**
Pendant, buckle & t-shirt also available (pages 28, 57 & 78).



**A111
Desmodus**

Wriststrap
The metaphor to capture that dark and dangerous creature that stalks the night.
One size Adj.



✳ **CAUTION:** Repeated over-bending of bangles will cause metal to fracture.

- 1 **A69**
La Fleur de Baudelaire
 Bangle
 Paris' celebrated C.19th 'gothic' poet and visionary and champion of the supernaturally creative powers of absinthe; with Swarovski crystal. One size Adj. ✱ ‡ ✧
- 2 **A112**
Tightlace Corset Bangle
 Bracelet
 Provocative Victorian waist cinching, applied now to the sensual wrist; with black elastic, black satin ribbon & Swarovski crystal-set heart slide fastener. One size Adj. ‡ ✧
- 3 **A78**
Elizabethan
 Bangle
 Robert Dudley's original design for the tracery molding above the North entrance to Kenilworth Castle for his great love, alas, never used; with Swarovski crystal hearts. Also in the Elizabethan range - ring, (page 42) & stud earrings, (page 34). One size Adj. ✱ ‡ ✧
- 4 **A126**
Cat Sith
 Bracelet
 Superstition and folklore pervade the mysterious black cat, known in Celtic mythology as the fairy Cat Sith. Black pewter with Swarovski crystal eyes and bell adornment. On faux leather (vegan) strap, with adjustable chain. For matching pendant, ear wrap & hair slide, see pages 18, 37 & 59. One size Adj. N ‡ ✧
- 5 **A125**
Wild Black Rose
 Hinged Bracelet
 A trinity of jet-coloured blooms - a portent of love from the shadows. With magnetic fastening & safety chain. Matching earwrap page 37 & NEW matching hair slide, page 59. Sizes: S/M & M/L. N
- 6 **A129**
Infinitum
 Bracelet
 Forevermore - the element of your mortal existence destined to be endless... Framed by 2 black diamond Swarovski crystals. On faux leather (vegan) strap, with adjustable chain. Companion choker, P858 page 7. One size Adj. N ‡ ✧
- 7 **A121**
The Sophia Serpent
 Bracelet
 The Ouroboros, ancient Gnostic symbol of eternity, rebirth and the unity of everything, representing the sun and soul of the world. See pages 34 & 44 for matching earrings & ring, also page 7 for NEW necklace. Sizes Small & Large. ‡ ✧
- 8 **A116**
Rose Of Perfection
 Wrist Strap
 An esoteric symbol of divine perfection. Leather strap with adjustable fastenings & Swarovski crystals. One size Adj. ‡ ✧

Model is wearing :
 P858 Infinitum choker
 A129 Infinitum bracelet

Model : **Dragonfly**
 facebook.com/GuiDragonfly



Sizes:

Bracelets are mostly 'One Size, adjustable', covering from Small to Large. However, where fixed sizes are indicated, these are divided into three approximate categories:

SMALL: approx. 6"-7½" (153-191mm) circumference;
 MED: approx. 7"-9" (178-229mm) circumference;
 LARGE: approx. 7½"-9½" (191-242mm) circumference.

When supplemented with 'Adj.', a bangle has some degree of adjustment, usually achieved by gently squeezing open or closed to fit.

✱ **CAUTION:** Repeated over-bending of bangles will cause metal to fracture.

‡ Specified crystal colours are subject to availability and may be substituted.



1
A69
La Fleur de
Baudelaire
*



2
A112
Tightlace
Corset Bangle



3
A78
Elizabethan
*



4
A126
Cat Sith



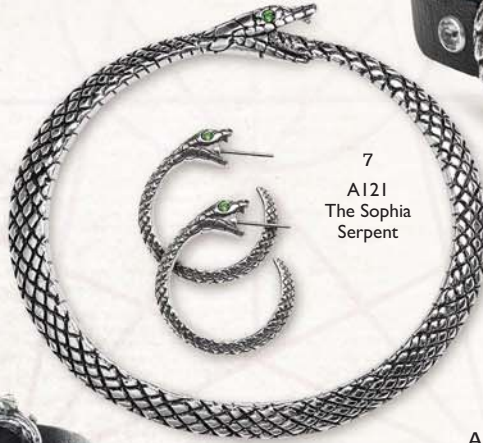
5
A125
Wild Black
Rose



6
A129
Infinitum



8
A116
Rose Of
Perfection



7
A121
The Sophia
Serpent



A117
Ouija Eye
Bangle

Seeing into the past,
the present and the
future with the unsettling
guidance of the spirit board.
One size Adj. *

The Ouija range includes
pendant P766 (page 7),
earstuds E396 (page 35)
& ring R215 (page 44).

Bangle
Finial
Detail

Shown smaller than actual size

Made with - SWAROVSKI ELEMENTS



1
A101
Flocking Ravens



2
A96
Skull & Briar Rose

A96
Sliding bead
ribbon fastener



3
A114
Claddagh By Night
*



4
A108
Viennese Nights

A108
Sliding bead
ribbon fastener



5
ULFA6
Devil Heart



6
A106
Bacchanal Rose

A106
Sliding bead
ribbon fastener



7
A80
Passion
*

A109
Black Consort
Wriststrap

The majestic raven, wings outstretched, gliding alongside its adopted squire offering protection and guidance.
On adjustable leather strap.



Matching ring R205, page 44.



A88
Vis Viva

Hinged Bracelet

The living power; overwhelming energy and the force of life encircles and liberates the wearer; with Swarovski crystals. Shown with matching ring (R183), page 44.

One size Adj. * ‡ †



Matching ring R183, page 44.

BLACK CONSORT

EXTENDED INFORMATION, VIEWS AND SPECS ARE AVAILABLE ON EVERY ITEM AT: WWW.ALCHEMYENGLAND.COM

1 **A101**
Flocking Ravens

Bracelet

A circlet of ravens performs its calling, protects you and takes you to magical places; with Swarovski crystals.

One size Adj. ‡ ✦

2 **A96**
Skull & Briar Rose

Bracelet

A beautiful romance, turned to death and ashes. Pewter & black acrylic roses with double ribbon fitting.

One size Adj.

Adjusted by skull bead slider.

3 **A114**
Claddagh By Night

Bangle

Love, Friendship and Loyalty vouchsafed from the underworld, in the ancient Irish tradition.

The original symbol was first produced as a ring, in the west coast village of Claddagh in the 17th century.

With matching choker, ear studs & ring, pages 22, 41 & 42. One size Adj. ✦ ‡ ✦

4 **A108**
Viennese Nights

Bracelet

The quintessential creature of the night, fashioned in opulent Renaissance scrollwork defining the decadent streets of Europe's fabulous den of iniquity.

See matching necklace on page 13 and companion earstuds, page 41. One size Adj. Adjusted by heart bead slider. ‡ ✦

5 **ULFA6**
Devil Heart

Bangle

Love, is sinful, naughty and oh, so much fun!

Matching necklace & pendant, page 18, earrings, page 33 & ring, page 42. Sizes: Small and Large. ‡ ✦

6 **A106**
Bacchanal Rose

Bracelet

A sumptuous bracelet with a romantic motif hiding, or revealing, a secret libertine passion for wine and sensual pleasures; black roses for dark love and grape vines for vinous delights. Featuring black acrylic roses, Swarovski crystals & black ribbon.

Matching necklace p. 22, earrings, p. 34, & ring, p. 42. One Size Adj. Adjusted by heart bead slider. ‡ ✦

7 **A80**
Passion

Bangle

A tangled cuff of bloody thorns, encrusted with Swarovski crystal drops; complementing the equally empathetic earwrap, page 37 & NEW "Passionette" earrings, page 33. One size Adj. ✦ ‡ ✦

Model is wearing -

P857 Hamingja necklace

A109 Black Consort wrist strap

R205 Black Consort ring.

Model : **Elisanth** - www.elisanth.com

Photo : **Zatsepin Alex** - www.zatsepin-alex.com

Lenses : **Samhain** - www.samhaincontactlenses.com

✦ **CAUTION:** Repeated over-bending of bangles will cause metal to fracture.

✦ Made with - SWAROVSKI ELEMENTS

TIMEPIECES

Wristwatches and bracelet are all inset with an imported, quality quartz crystal movement. Several of the watches are enhanced with Swarovski crystal, trans-enamel or two-tone finishes.

Watches come complete in either a black flock presentation pouch or an attractive black gift box, all gold-blocked with the Alchemy logo.

Visit our website www.alchemyengland.com for additional views of all Watches.

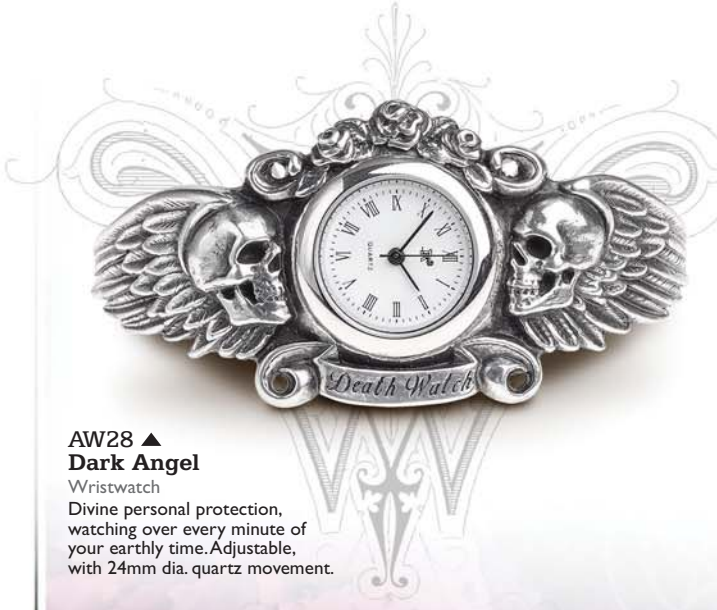


For more information behind Alchemy's arcana of subjects, relating to products, symbols, designs and very much more, see "Further Information" on page 3.



AW24 ▶ Heartfelt

Strap Watch
Four beautiful Swarovski crystal hearts adorn this ravishingly ornate leather strap, for keeping time as well as looking gorgeous! With 24mm dia. quartz movement. One size Adj ‡



AW28 ▲ Dark Angel

Wristwatch
Divine personal protection, watching over every minute of your earthly time. Adjustable, with 24mm dia. quartz movement.



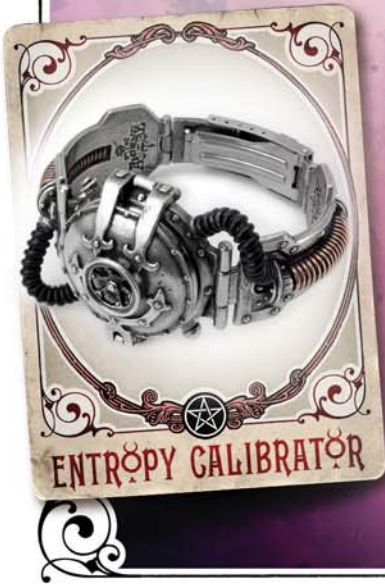
AW16 ▲ Imperial Dragon

Wristwatch
With all the mystique of the orient and the elegance of a Victorian connoisseur collector; this classical dragon bracelet coils around the watch face; adjustable. With 24mm dia. quartz movement.

AW15 ▶ EER Steam-Powered Entropy Calibrator

Wristwatch
Measuring the decay of time using Carnot's second law of thermo dynamics. With 35mm dia. quartz movement and unique 'Galvanic Scale' watch face and magnetic-fastening hatch. One size adjustable.

Shown with open hatch, revealing the gauge watch face.





AW23 ▶
Telford
Chronocogulator
Timepiece

Wristwatch
 An antiqued pewter 'Cast-Iron' framework and gearwheels on a robust, high quality, Italian brown leather strap, mounts the essential, modern antiquarian's, sepia cog-faced time piece; with Swarovski crystals. With 35mm dia. quartz movement. ‡

AW27
Thorgud
Ulvhammer

Wristwatch
 Wolves' heads adorn the richly decorated Viking Thor's Hammers carved with Nordic knotwork and the head of the thunder god. With 35mm dia. quartz movement.



AW29
Affiance

Wristwatch
 A confection of passion and promise in crystal and metal, bound by a corded unity knot to symbolise an oath of fidelity. With Swarovski crystals and a 24mm dia. face. ‡



AW22 ▶
Bed Of Blood Roses
Bracelet Watch

Wristwatch
 Tangled emotions and romance; sparkling roses flourish within the heart's blood of this intoxicating watch. Swarovski crystals glitter from beneath the bright red enamel. With 24mm dia. quartz movement. ‡

See also matching necklaces (pages 18 & 22), earwrap (page 37) & earstuds (page 41).




Model is wearing -
 AW24 Heartfelt Strap Watch
 R212 Demon Black & Angel White Ring
 R120 Absinthe Fairy Spirit Crystal Ring
 R227 Blood Rose Ring

Model : **Obsidian Kerttu**
facebook.com/ObsidianKerttuOfficial/
 Photo : **Nevena Mitrovic**
instagram.com/nena.mit/

BUCKLES

Alchemy buckles are all cast in solid English pewter, and are designed to be snapped onto standard 1½" (38mm) belt straps.

Visit our website www.alchemyengland.com for additional views of all Buckles.

 For more information behind Alchemy's arcana of subjects, relating to products, symbols, designs and very much more, see "Further Information" on page 3.



L1B
Leather Belt Strap
Belt Strap

High quality, 1½" (38mm) wide, black split leather belt straps with press-stud fastenings to accept any jeans-belt buckles: in a choice of three waist sizes; S (28" - 34"), M (34" - 40"), L (40" - 44").



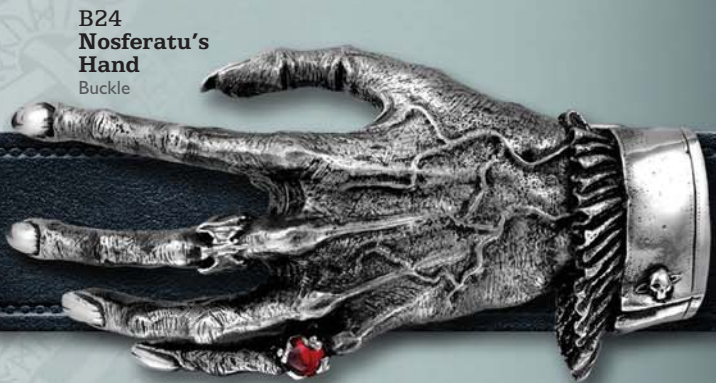
B100
Rabeschadel
Buckle

The great black bird is famous for its prophetic powers, being Odin's messengers and capable of foretelling death. Matching Rabeschadel items; choker (p.27), ear studs (p.41), ring (p.46) & wriststrap (p.49).



B74
Wulven
Buckle

'Of the Wolf'... the children of the night. With translucent midnight-blue enamel.



B24
Nosferatu's Hand
Buckle

The withered, yet living hand of the infamous undead, insensitively embraces the strap; in dark pewter with polished highlights and red cabochon ring. ‡



B96
Thunderhammer
Buckle

The Norse god Thor's mighty weapon of utter destruction, Mjolnir. Also available as large & small wrist straps (see page 47).



B75
Letter Of Marque
Buckle

An official, Royal warrant to 'privateers'; an 18th century license to kill!

B102
Jormungand
 Buckle



The Norse legend of Jörmungandr, the 'Midgard' or World Serpent is the greatest ouroboros. Matching pendant P774, page 28 and NEW wrist strap A128, page 49.

B103
Quietus Moon
 Buckle



The man in the moon is not always the avuncular gentleman of fairy stories.

B8
The Alchemist
 Buckle



The original Philosophus Magus portrait; set with a black rose.

B95
Ram's Skull
 Buckle



Sacrifice for a pagan.



Model is wearing -

- P833 Dark Wolf pendant,
- P788 Wolf Macht pendant,
- R171 Thor's Runehammer ring,
- B74 Wulven buckle.

Model: **Dark Wolf**
 @Dark.Wolf.Model
 Photo: **Les Songes De Lilou**
 @Les.Songes.De.Lilou

ACCESSORIES

The Elegant Way To Display Your Nocturnal Tendencies.

Visit our website www.alchemyengland.com for additional views of all Accessories.



For more information behind Alchemy's arcana of subjects, relating to products, symbols, designs and very much more, see "Further Information" on page 3.



- ▲ **CL14**
Uncle Albert's Cuff Link
 Cuff Links
 The perfect, miniature 13-hour Lunar-time Victorian era fob watch. Coordinating cuff-stud earring, page 40.



- ▲ **DP3**
Bat Dress Pins
 Dress Pins (Pack of 3)
 An understated reminder of the silent, prevailing powers of the night.
- ▲ **DP1**
Memling Skull
 Dress Pins (Pack of 3)
 Understated, Hans Memling style skull, as if taken from his Vanitas Triptych.



- ▲ **SB1**
Skull Logo Shopping Bag
 Shopping Bag
 Fold-up shopping bag featuring repeating Alchemist skull design. Supplied in a small carrying pouch with stud fastening and belt clip for easy storage.



- ▲ **AQU4**
The Alchemist's Black Feather Quill Pen
 Feather Pen
 An ancient medieval writing tool ideally suited to the arcane practitioner of the mystic arts. Fashioned from the moulted flight feathers of a goose, swan or other large avian species. With ball point pen insert.

- ▲ **AD1**
Black Rose Fragrance Diffuser
 Fragrance Diffuser
 80ml fine French fragrance diffuser, with black reeds.

- ▲ **AAC47**
Mortalitas Pill Box
 Pill Box
 A miniature bedside skull to keep safe and remind you of your daily ration of essential medication; with brass hinge and catch.

- ▲ **ROSE1**
Black Rose
 Rose
 Convincing, artificial symbol of perfection and tragic love.



▲ **HS4**
Roseus Pentagram
Hair Stick
For Alchemical perfection.



HH11
Cat Sith
Hair Slide

Superstition and folklore pervade the mysterious black cat, known in Celtic mythology as the fairy Cat Sith.
Matching pendant, page 18, ear wrap page 37 and NEW bracelet, page 51.



HH9
Get A Grip
Hair Slide

A sinister looking, yet innately harmless main de l'os. On a sprung steel hair clip.



HH12
Wild Black Rose Hair Slide
Hair Slide

A trinity of jet-coloured blooms - a portent of love from the shadows. **N**
Companion earwrap E410, page 37 & NEW bracelet, A125 page 51.



HG1B / HG1S
Skully Hair Grip
Black/Silver

Hair Grip (Single)
The boneheaded, hollow-eyed simpleton stares into the face of convention and confounds any curious onlooker. Available in black or silver; supplied singly.



HH10
Black Raven Hair Slide
Hair Slide

The Raven - the modern vampire and 20th century symbol of the undead; in blackened pewter.
Companion pendant, page 24 & earrings, page 34.



HH1
Darkling
Bat Slide

Hair Slide
The classic vampiric bat swoops spreadeagled towards it's prey.



▲ **ABR5**
Norsebraid Beard & Hair Beads
Beard / Hair beads (Set of 3)

The complete Viking warrior's amuletic tool kit, to incite a berserker's invincibility. Set of 3 includes Thor's Hammer, Raven's Skull and Viking Warrior's Helmet.



▲ **ABR1**
Funereal Beard & Hair Beads
Beard / Hair beads (Set of 3)

Essential regalia for the well appointed mute and pagan mourner. Set of 3 includes Janus Skull, Coffin & Alchemist Skull.



Model is wearing :
HH12 Wild Black Rose hair slide
E347 Bacchanal Rose earrings.

Model : **Dragonfly**
facebook.com/GuiDragonfly

DRINKING VESSELS



- Traditional, glass beer mugs for ale and lager, with the distinctively unique addition of Alchemy's cast pewter motifs and features.
- Pewter tankards and goblets hand- made the traditional way by our partners in Sheffield, using a heavier 0.26 gauge pewter and with decorative castings made at our workshops in Leicester.
- Alchemy's unique and stylishly decadent Absinthe collection of connoisseur drinking apparatus dedicated to the glorious and mystifying ritual, including Art Nouveau castings in English pewter and specially commissioned, hand made, green tinted forest glass.

Visit our website www.alchemyengland.com for additional views of all Drinking Vessels.

For more information behind Alchemy's arcana of subjects, relating to products, symbols, designs and very much more, see "Further Information" on Page 3.

ALCHEMY
England • 1977



CWT59 ▶ Thunderhammer Tankard †

Beer Glass

Mjolnir, the Norse god Thor's mighty weapon of utter destruction. A one pint capacity (600ml) glass mug with handle, and a large, antiqued pewter 3D modelled Viking Thor's hammer decorated with carved, authentically traditional knotwork.



◀ CWT58 Villa Diodati Continental Beer Glass

Beer Glass

Drink to the memory of Byron, Polidori and Shelley, and the birth of their Frankenstein and Dracula. Glass approx. 180mm high. Approx. half pint capacity (300ml).



▶ AAT10 Silver Dragon

Pewter Tankard

This breathtaking sculpted dragon in full flight, forms the handle of this stylish 1 pint capacity (600ml) tankard.



▶ AAT25 Viking Horn

Pewter Tankard

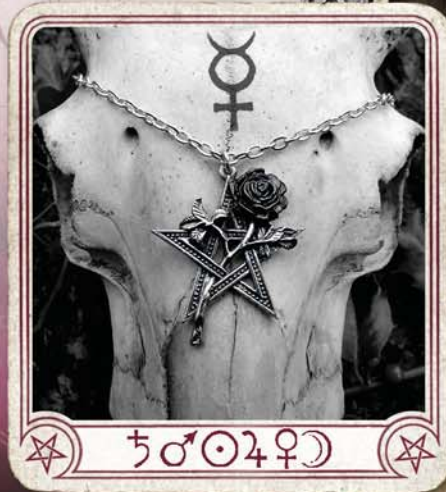
Robust 1 pint (600ml) tankard with simulated horn 'fertility' handle in traditional Viking style and carved pewter mounts.



**AAG51
Ruah Vered Goblet**

Stainless Steel Goblet
The spirit and the 'Breath of Life' combined with the sensual rose of love, toasting health, harmony and passion.

Also shown with E402 earrings, P715 pendant & NEWV68 Vault wall mount.



RUAH VERED Vault
by Alchemy

1 ACWT9
The Wormwood Tree Absinthe Shot Glass †
Shot Glass
The truly decadent way to enjoy, neat, the gratifyingly creative delights of the green fairy. Approx. 123mm high.

2 ACWT2
La Fée Verte Shot Glass †
Shot Glass
'The Green Fairy' Art Nouveau style 'forest glass' shot glass. Approx. 65mm high. *

3 ACWT4
La Fée Verte Absinthe Spoon
Absinthe Spoon
Traditional sugar cube strainer for watering down absinthe, in the form of an Art Nouveau fairy.

4 ACWT3
La Fée Verte Tumbler †
Glass Tumbler
Traditional tall absinthe tumbler, in 'forest glass' with pewter Art Nouveau fairy base, for taking absinthe with water and sugar. Approx. 180mm high. *

* This glass item is traditionally hand-blown. Minor flaws and imperfections are a feature which naturally enhance the beauty of the glass.



1 ACWT9
The Wormwood Tree Absinthe Shot Glass



2 ACWT2
La Fée Verte Shot Glass
*



3 ACWT4
La Fée Verte Absinthe Spoon



4 ACWT3
La Fée Verte Tumbler
*

The Vault™
by **Alchemy**

Original and official:
Quality resin giftware, designed
by Alchemy Studios, England.

Visit our website www.alchemyengland.com
for additional views of all Vault items

For more information behind Alchemy's arcana
of subjects, relating to products, symbols, designs
and very much more, see "Further Information"
on page 3.

A MOST
Certain, Strange, and true Discovery of a
VVVITCH.



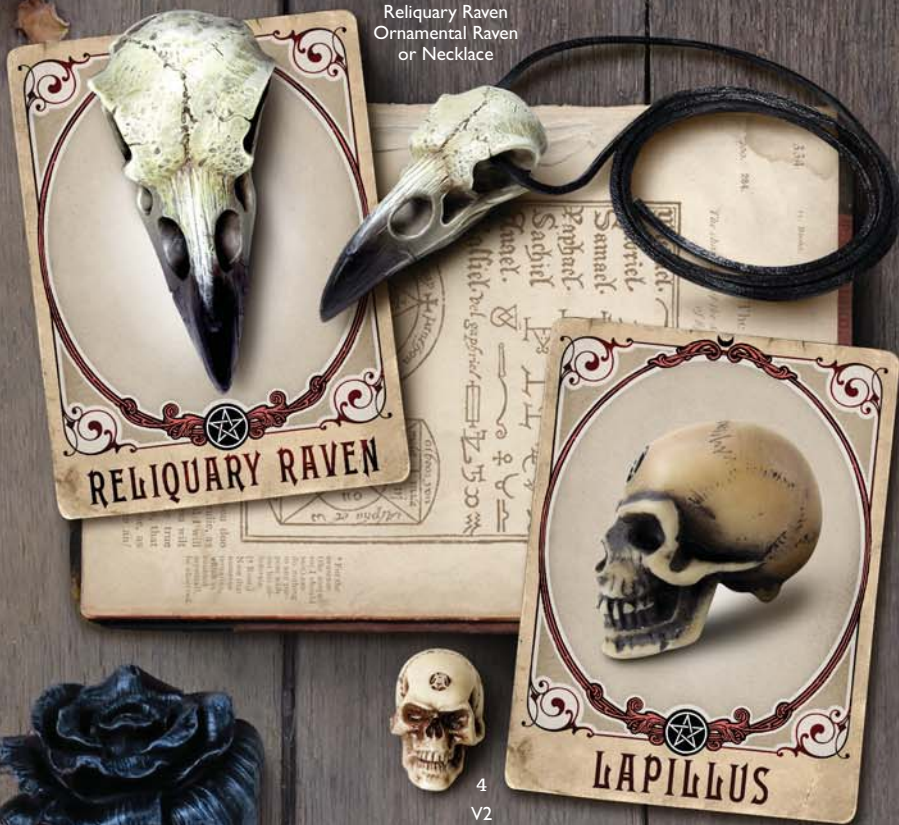
2
V67
Omega Raven Skull
Desk Ornament



1
V68
Ruah Vered
Wall Mount / Altar

EXTENDED INFORMATION, VIEWS AND
SPECS ARE AVAILABLE ON EVERY ITEM PAGE

3
V66
Reliquary Raven
Ornamental Raven
or Necklace



4
V2
Lapillus Worry Skull
Pocket Bead



5
V69
Black Rose
Wand



6
V36
Black Rose
T - Light Holder



7
V33
Rose Of Otrolanus
T - Light Holder



- 1 **V68**
Ruah Vered
Wall Mount / Altar Piece
The elemental pentacle protects the all powerful panacea of the black rose, set within a circle engraved with the sigils of five Arch Angels - Michael, Gabriel, Camael, Raphael and Anael. **N**
Approx. diameter 24cm
- 2 **V67**
Omega Raven Skull
Desk Ornament
Inscribed with protective wisdom of arcane cabalistic spells and channeling the influence of Huginn and Muninn, Odin's harbinger birds of thought and memory. **N**
Approx. length 16.5cm.
- 3 **V66**
Reliquary Raven
Ornamental Raven / Necklace
To the followers of Mithras, the raven was a symbol of initiation into the deeper mysteries. A sacred talisman to steady the course and point the way through life's maelstrom. **N** (Leather thong not supplied)
Approx. length 6cm.
- 4 **V2**
Lapillus Worry Skull
Pocket Bead
A diminutive yet uncanny skull to comfort and guide a troubled soul.
Approx. height 1.5cm.
- 5 **V69**
Black Rose Wand
Wand
Graven with empowering sigils, the sceptre of spragryic practitioner - Quintus Thorn. The essential tool in channeling the ultimate alchemical wisdom - The Black Rose Quintessence. **N**
Approx. height 28cm
- 6 **V36**
Black Rose T - Light Holder
T-light Holder
The alchemical mystery personified by a point of light in the bloom of eternal night. (Candle not included).
Approx. diameter 8.5cm.
- 7 **V33**
Rose Of Otrolanus T - Light Holder
T-light Holder
The ethereal light of the fifth element ensnared by the midnight rose. (Candle not included).
Approx. diameter 12.5cm.



All Vault items are made of cast and hand finished resin and are featured smaller than actual size.

1
V72
Dragon Keeper's Skull
Desk Ornament



2
V35
Count Magistus
Money Box



5
V43
Crimson Demon Skull
Desk Ornament



6
V37
Geistalon
Unicorn Skull
Desk Ornament



1 V72
Dragon Keeper's Skull
Desk Ornament
Omniscient skull of the first warlock to harness ultimate infernal potential of Nidhogg; the dragon who dwelt beneath the roots of Yggdrasil - the world tree.
N Approx. height 20.5cm.

2 V35
Count Magistus Money Box
Money Box
Place your trust in a gentleman who's reputation is beyond reproach (and beyond the grave).
Approx. height 14.5cm.

3 V28
Raven's Ward T - Light Holder
T-light Holder
The harbinger of the old gods, illuminating the dark night of the soul. (Candle not included).
Approx. height 11 cm.

4 V71
Grimalkin's Ghost
Desk Ornament
Feline familiar to the great French prophet and astrologer - Nostradamus, who having outlived his master, carried the seer's arcane wisdom from Paris to London where he eventually fell in with one William Shakespeare. **N**
Approx. height 18.5cm.

EXTENDED INFORMATION, VIEWS AND SPECS ARE AVAILABLE ON EVERY ITEM AT:
WWW.ALCHEMYENGLAND.COM

The Vault™

by Alchemy

All Vault items are made of cast and hand finished resin and are featured smaller than actual size.

3

V28
Raven's Ward
T - Light Holder



4

V71
Grimalkin's Ghost
Desk Ornament

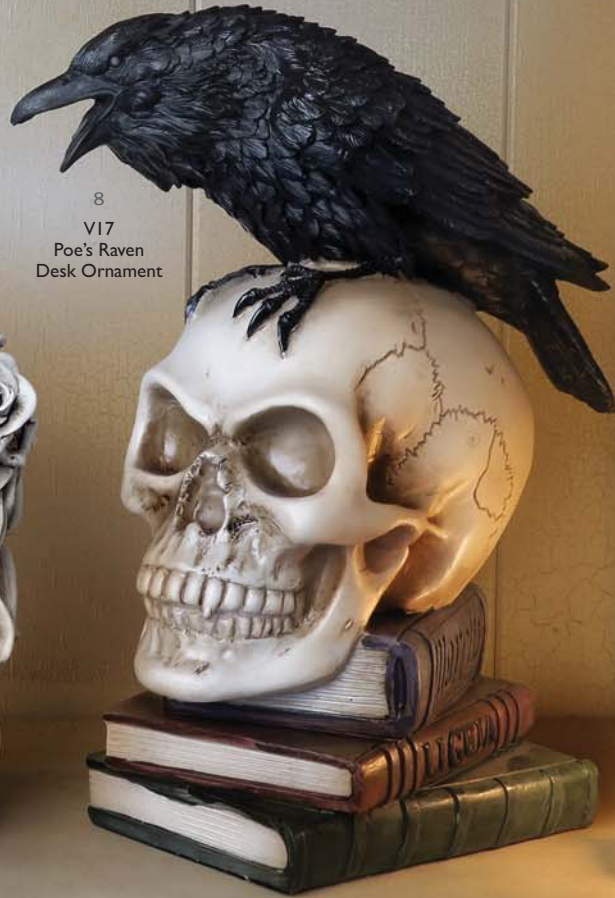


ALCHEMY
England • 1977

7
V70
Unicorn
Desk Ornament



8
V17
Poe's Raven
Desk Ornament



5 V43
Crimson Demon Skull
Desk Ornament
Vermiculus, Archduke of Chaos and guide to the lost souls who fall through the shifting terrascapes that make up the fractured topography of Hell.
Approx. height 15cm.

6 V37
Geistalon Unicorn Skull
Desk Ornament
The thundering phantom of a legendary armored stallion. With magnetic, removable horn.
Approx. height (with horn removed) 15cm.

7 V70
Unicorn
Desk Ornament
The sole survivor of an ancient lineage, who's fellows all perished in the great flood. It's unique horn is said to draw down the power of the moon. **N**
Approx. height (with horn removed) 15cm.

8 V17
Poe's Raven
Desk Ornament
Inspiring Edgar Allan Poe, Master of the Macabre to give poetic voice to the Raven, "NEVERMORE".
Approx. height 18.5cm.

V26 ▼
Time Chronambulator

Desk Clock
The beating heart of the pan-dimensional adventurer's clockwork time machine. Requires 1 x 1.5v AA battery (not included). Approx. height 12cm.



V26
Time
Chronambulator
Desk Clock

V15 ▶
The Stormgrave Chronometer

Desk Clock
Professor Stormgrave's patent celestial chronometer, mapping the forces that govern the passing of eternity. Requires 1 x 1.5v AA battery (not included). Approx. height 20cm.



V15
The Stormgrave
Chronometer
Desk Clock

V1 ▼
Omega Skull

Desk Ornament
Life-sized Alchemist's skull, in aged bone-resin, carved over its entire surface with all the symbolic wisdom of 7000 years of history. With the traditional golden tooth. Approx. height, 13.5cm



V55 ▼
Masque Of The Black Rose

Wall or Table Picture Frame

All that remains of a legendary masquerade ball from the Eve of St. Levantius. A noble, boyar vampire tryst, where the dark patricians revelled in a night of pure sensuality. Holds a 6" X 4" picture. Approx. height 24cm.



V54 ▲
Masque Of The Black Rose
Wall or Table mirror

Photo by Alternate History

V50 ▼
Anguistralobe

Desk Clock

Daedalian C18th instrument which measured the direct path of destiny between specified heavenly bodies.

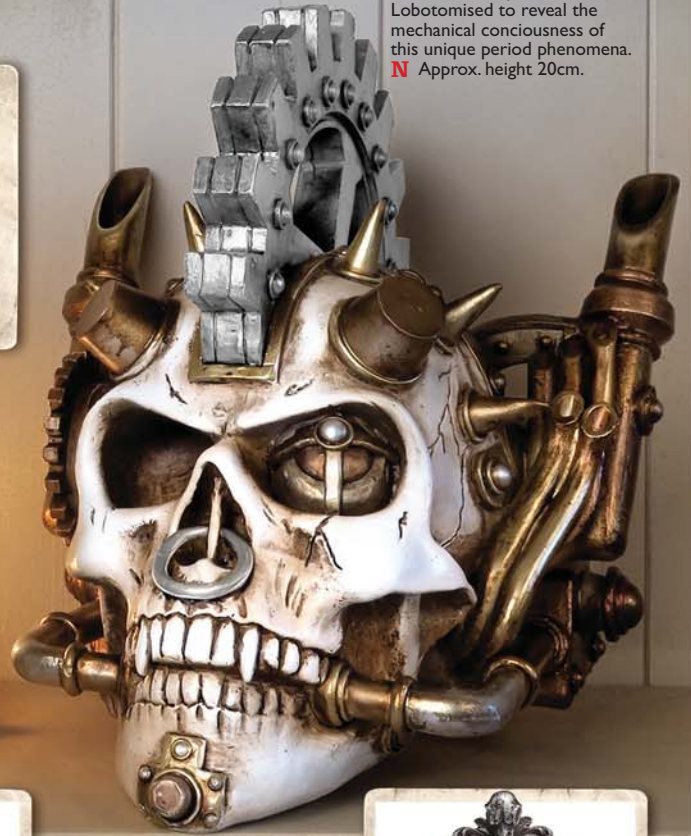
Requires 1 x 1.5v AA battery (not included).
Approx. height 13cm.



Side View of Steamhead Skull

V73 ▼
Steamhead Skull
Desk Ornament

Unveiled to her majesty Queen Victoria at the great crystal palace exhibition of 1851. The first punk automaton. Lobotomised to reveal the mechanical consciousness of this unique period phenomena. **N** Approx. height 20cm.



V76 ▼
Kraken

Wall or Table Picture Frame

The terrifying leviathan who's tentacles writhe up from the abysmal depths of history to drag the unwary soul back into the Lovecraftian under-deeps. **N**

Holds a 6" X 8" picture.
Approx. height 23.5cm.

V57 ▼
My Soul From The Shadow

Wall or Table Picture Frame

A spirit raven takes flight to guide a forlorn lover's desperate search for hope after the tragic loss of his beloved. Holds a 6" X 4" picture.
Approx. height 25cm.



V77 ▲
Kraken
Wall or Table Mirror



Photo by Annie Bertram

V56 ▲
My Soul From The Shadow
Wall or Table Mirror



Model - Dragonfly

V49 ▼

Dragon Skull

Illuminated L.E.D. Desk Ornament
The petrified cranium of an infernally mortifying dragon imbued with the eternal cleansing fire of creation. Battery included. Approx. length 15cm.



V31 ▼

Dragon Wand

Wand
Carved from the fire bone of Jörmungandr, last of the Draco Mundi. Shown with magical pentagram seal on reverse. Approx. height 24cm.



V53 ▼

Scrimshaw Ram Skull

Desk Ornament
Worshipful head of the cult of Ammon, carved with scrimshaw foliate forms that symbolise the eternal cycle of birth and regrowth. Approx. length 18cm.



V16 ▼

Corvus Alchemica

Desk Ornament
A larger than life mythic raven skull, personifying the ancient god of prophecy, ill-omen and lost souls. Approx. length 16cm.



The
VaultTM
by **Alchemy**

V52 ▶
Ravenger
Wall Mount

The dark and mysterious phantom; afterlife totem of the Elysian Corvid. Approx. width 27cm.



V29 ▲
Thors Hammer Wall Mount

Wall Mount
Thor's mighty hammer Mjölhnir commanding the primal energy of the storm. Approx. height 21cm.

V45 ▼
Hora Mortis
Desk Clock

A hand from the grave, subtly reminding you of the time you have left! With 35mm dia. quartz movement watchface. Approx. height 13cm.



V46 ▼
Dragonlore Clock
Desk Clock

The spectacular time dragon, sleeps his timeless guard upon an engraved stone that reads 'time, greatest of treasures' Approx. width 13cm.



V47 ▲
Morgan Theomachia
Wall Mirror

As the ancient, feuding gods of Celt versus Saxon battle in the form of dragons, Arthur's half-sister, Morgan, waits to take advantage. Approx. height 22cm.



V74 ▲
Skull T-Light Holder
T-Light Holder

Thought shines eternally bright, whilst the ephemeral body withers as fallen fruit in the ground. **N** Approx. height 4cm.





V63 Pentagramatron

Trinket Dish
The most powerful of supernatural magical talismans, multiplied by it's own sacred number.
Approx. diameter 9cm.



V61 Vampyr Bat

Trinket Dish
The torpid revenant awakens to the moon dawn, to quench it's thirst for mortal blood.
Approx. width 8cm.



V62 Anguistralobe

Trinket Dish
Commemorative dish celebrating the C18th instrument which measured the direct path of destiny between specified heavenly bodies.
Approx. diameter 9cm.



V65 Black Rose Wreath
Use as a Wall Mount or Candle Stand

▼ **V65 Black Rose Wreath**

Wall Hanger or Candle Stand
A devotional wreath for an inexplicably dark and mysterious love.
Approx. diameter 18cm.



V60 Half Skull

Trinket Dish
Cleaved asunder, the untenanted skull of a once mighty overlord who's sequestered secrets hide within it's fissures.
Approx. width 8.5cm.



1 V78

Sacred Cat

Trinket Box

Place your treasures within the hallowed casket and be assured of the protection of the divine feline presence of Ailouros. **N**
Approx. width 10cm.

2 V59

Pentagram Box

Trinket Box

The Stella Rosarium protects your precious treasures with sacred geometry from Chalisbury Cathedral's Rose Chapel. Approx. width 16cm.

3 V79

Thor's Hammer Box

Trinket Box

A heathen coffer under the protection of the thunder god ensuring strength, healing and fertility. Carved with runes which proclaim 'A blessing on this hammer'. **N**
Approx. length 14cm.

TRINKET BOXES



All Vault items are made of cast and hand finished resin and are featured smaller than actual size.



1
V78
Sacred Cat
Trinket Box

2
V59
Pentagram Box
Trinket Box



3
V79
Thor's Hammer Box
Trinket Box

HAND MIRRORS

The Vault™
by Alchemy

All Vault items are made of cast and hand finished resin and are featured smaller than actual size.



V10 Mirror Side



V64 Mirror Side



V9 Mirror Side

1
V10
Black Angel
Hand Mirror

2
V64
Sacred Cat
Hand Mirror

3
V9
Fate Of Narcissus
Hand Mirror



1 V10
Black Angel
Hand Mirror

One of the most alluring of the high order of angels, invoked by the Sigillum Aemeth, Dr. John Dee's scrying stone.
Approx. height 23cm.

2 V64
Sacred Cat
Hand Mirror

Gaze into the glass long enough and you shall divine the feline prophesies of Ailouros, hearth spirit of the temple of Amun.
Approx. height 22.5cm.

3 V9
Fate Of Narcissus
Hand Mirror

Stare long enough into the argent pool and one inescapable destiny shall befall all, be they God or mortal.
Approx. height 18cm.

ALCHEMY
England • 1971

EXTENDED INFORMATION, VIEWS AND SPECS ARE AVAILABLE ON EVERY ITEM AT:
WWW.ALCHEMYENGLAND.COM



4
V80
Devil's Heart
Hand Mirror
(double-sided)

5
V75
Kraken
Hand Mirror



6
V58
Baroque Rose
Hand Mirror



7
V34
Gothic Ankh
Hand Mirror



Model with :
E346 Elizabethan earrings
P711 Crystal Heart pendant
V9 Fate Of Narcissus hand mirror

Model : La Esmeralda
www.facebook.com/Alternative.Model.La.Esmeralda
Photo : Silver Pearl Photography

4 V80
Devil's Heart
Hand Mirror
Saint or Sinner ?
Love, dark passions, and lustful
desires are akin to the rapturous
reflection that sees all. **N**
Approx. height 23cm.

5 V75
Kraken
Hand Mirror
The terrifying leviathan who's
tentacles writhe up from the
abysmal depths of history to
drag the unwary soul back into
the Lovecraftian under-deeps. **N**
Approx. height 21cm.

6 V58
Baroque Rose
Hand Mirror
Grown from a thorn of the one
true black rose - The obsidian
bloom that is the Opus Magnus
of the Alchemist
Approx. height 21.5cm.

7 V34
Gothic Ankh
Hand Mirror
Sacred relic of Aset,
beloved goddess of all
vampires.
Approx. height 21.5cm.

COMPACT MIRRORS

V38
Gothic Heart
Compact Mirror

An exquisitely carved window reflecting the beauty and barbarity of a lost golden age of mediaeval chivalry.

Approx. height 8cm.



Front



Back

V39
Ghost Of Narcissus
Compact Mirror

Glimpse the culmination of your mortal vanity, as you muse upon the futility of worldly endeavours with this secret memento mori.

Approx. height 8cm.



Front



Back

V27
Nevermore
Compact Mirror

Gaze upon your mortal reflection under the scrutiny of Poe's mocking Raven.

Approx. width 9cm.



Front



Back



▲ Model :
R224 Bastet Goddess ring
V64 Sacred Cat hand mirror
Model & Photography : **Joan Wolfie** - @Joanwolfie

◀ Model :
V27 Nevermore compact mirror
Model & Photography : **Magda Corvinus**- @magda_corvinus

EXTENDED INFORMATION, VIEWS AND SPECS ARE AVAILABLE ON EVERY ITEM AT:



**V3 ▲
Metalised
Alchemist Gear Knob**

Gear Knob / Ornamental Skull

The original Philosophus Magus, guiding the traveller to the path of enlightenment. (Bored and fitted with a rubber grommet for self-tap screwing onto gear sticks).

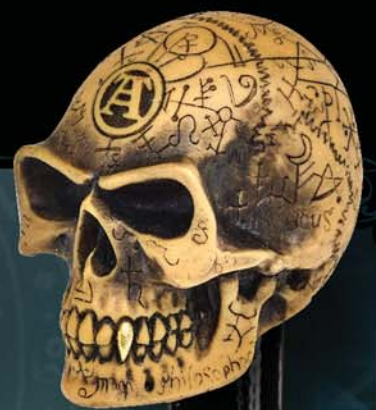
Approx. height 4.5cm.



**V40 ▲
Alchemist Gear Knob**

Gear Knob / Ornamental Skull

Bone resin version of the classic Alchemist Gear Knob. Approx. height 4.5cm.



**V48 ▲
Omega Skull Gear Knob**

Gear Knob / Ornamental Skull

The Alchemist inscribed with all the wisdom of 7000 years. With the traditional golden tooth. Approx. height 4.5cm.

**V41 ▼
Metalised Alchemist Skull**

Desk Ornament

A life-sized Alchemist's skull, immortalised in the mercurial lustre of the secret arts. With the traditional golden tooth.

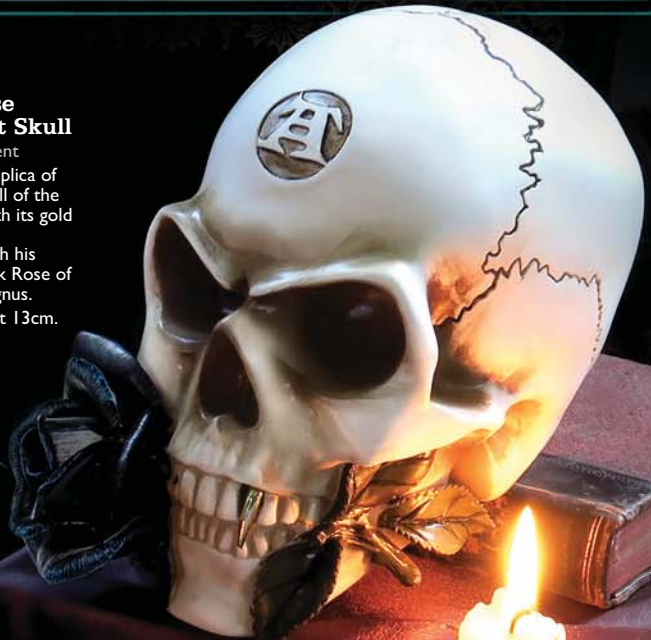
Approx. height, 13.5cm.

**V44 ▶
Black Rose
Alchemist Skull**

Desk Ornament

The lifesize replica of the actual skull of the Alchemist, with its gold canine tooth. Complete with his symbolic Black Rose of the Opus Magnus.

Approx. height 13cm.



**V4 ▶
Erasmus Darwin's
Steam-Cerebrum**

Desk Ornament with Stash Drawer

The last and greatest creation to be attributed to the Bedlam Institute of Galvanic Studies.

Approx. height 16cm.



Stash Draw

The Vault
by **Alchemy**

PURSES, BAGS & WALLET



PURSE - BAGS

(synthetic)

Alchemy's new, affordable collection of vegan, black PU purses each have an embossed Alchemy design on both the front and reverse, a zippered opening at the top and a detachable chain with synthetic leather shoulder strap.

Approx. dimensions: H: 18cm (7.09") W: 18cm (7.09") D: 6cm

Visit our website www.alchemyengland.com for additional views of all Bags.

CRAFTED GENUINE •H• LEATHER ACCESSORIES

LG6 Coffin Purse

Leather Purse

Soft black leather purse or cigarette case, with zipped side opening, on 15" (44.5cm) curb chain.

Approx. dimensions: 16.5cm (6") high X 10.5cm (4") wide X 5cm (2") deep.



LG15 Coffin Wallet

Leather Wallet

In high quality leather, with large bank-note section, several card pockets and eyelet hole for chain attachment.

Approx. dimensions: 17cm (6") high X 11cm (4") wide



Model is wearing :
P852 Phantom necklace
R216 Stealth ring
GB4 Gothic Cross purse-bag

Model : **Dragonfly**
www.facebook.com/GuiDragonfly

EXTENDED INFORMATION, VIEWS AND SPECS ARE AVAILABLE ON EVERY ITEM AT:

76 | WWW.ALCHEMYENGLAND.COM

Bags are shown smaller than actual size.
BAGS NOT TO SCALE.



GB1 ▲
Heart Skull
Purse-Bag

GB2 ▲
Pentagram
Purse-Bag

GB4 ▲
Gothic Cross
Purse-Bag

GB3 ▲
Night Bat
Purse-Bag

GB5 ▲
Raven Moon
Purse-Bag

GB6 ▲
Dragon
Purse-Bag

GB7 ▲
Skull & Crossbones
Purse-Bag

For more information behind Alchemy's arcana of subjects, relating to products, symbols, designs and very much more, see "Further Information" on page 3.

T-SHIRTS



Original Alchemy artwork printed onto high quality, black 100% cotton T-shirts.

1 Visit our website www.alchemyengland.com for additional views of all T-shirts.

For more information behind Alchemy's arcana of subjects, relating to products, symbols, designs and very much more, see "Further Information" on Page 3.

1 **BT890**
Jormungand

T-shirt

Jörmungandr, the name of the greatest ouroboros, the Norse legend of the 'Midgard' or World Serpent.

2 **BT889**
Alchemist Askance

T-shirt

Summoned from the shadows of eternity, the renowned pioneering philosopher known only as The Alchemist, attains the elusive Opus Magnus. The symbolically pure Black Rose of Perfection.

3 **BT846**
Mjólnir

T-shirt

Thor the storm god's mighty weapon of elemental awe. Mjólnir in Old Norse means "That which marks and pulverises to dust". An amulet of ancient Nordic magic wrought by the dwarven brothers Sindri and Brokkr, endowing the wearer with strength and fortitude. The fear of Thor's hammer was all that held back the frost giants, fearsome foes of the gods of Asgard before the final apocalyptic battle of Ragnarok.

4 **BT810**
Poe's Raven

T-shirt

Edgar Allan Poe's seminal creation alights upon the skull of his poetic father. The master of the macabre whose short life echoes the cry of the raven 'Nevermore'.

Available in sizes:

M (38"-40" chest size),

L (42"-44" chest size) &

XL (46"-48" chest size).

Branded with
AlchemyEngland logo.



Model is wearing -
BT890 Jormungand t-shirt
P811 Draconic Tryst pendant
R216 Stealth ring
Model : Chiron Padeloup - @chiron_fp
Photo : Joan Wolfie - @joanwolfie

EXTENDED INFORMATION, VIEWS AND SPECS ARE AVAILABLE ON EVERY ITEM AT:

HANGING SIGNS



ALHS14



ALHS15

HANGING SIGNS

From the philosophical musings of the Alchemist himself and the artists of Alchemy Studios, come a collection of profound and essential dark pearls of wisdom; 90 x 65 mm mini, enamelled metal signs, pre-strung to hang anywhere.



ALHS20



ALHS19



ALHS18



ALHS17



ALHS16



ALHS13



ALHS12



ALHS11



ALHS10



ALHS9



ALHS8



ALHS3



ALHS1

PLAYING CARDS



CARD7 Alchemy Tarot

Tarot Card Set
Divine your spiritual path through the esoteric wisdom of the Tarot. A fully illuminated oracle of classic Alchemy imagery. Fournier Tarot pack with 78 uniquely different images.

CARD8 Bicycle Poker Deck

Playing Cards
Stunning set of Alchemy Studios playing cards, designed & made by Bicycle. A truly alternative collection of 55 different images from all categories of the Alchemy Art Library.

POPSODA

Popsoda, UK.
www.popsoda.co.uk
 Alternative clothing.



Pamela Mann

Pamela Mann, UK.
pamelamann.co.uk/
 Leggings & tights.



Model: Magda Corvins - @magda_corvins

STEEL GROUND
 EUROPE'S SHOES
 originals
 Steel Ground
 Shoes, Portugal.
www.steelground-shoes.com
 Alternative footwear.



Model: Dragonfly - www.facebook.com/GuiDragonfly



D'Addario
PLANETWAVES™

Planet Waves, USA.
www.planetwaves.com
Guitar straps.



ALCHEMY licensing™

OFFICIALLY LICENSED ALCHEMY PRODUCTS

Alchemy Studios' unique and growing collection of distinctive artwork has, for many years now, been inspirational and highly influential within the alternative genres. Over time, its images have been used on T-shirts, posters and calendars, etc. But now, Alchemy's international appeal has led to a great variety of different licensed products being developed with over 40 official Licensees worldwide, and these are available through various distributors. Unfortunately, Alchemy are unable to sell most of these items themselves, however you can contact all our Licensees directly for details through the Alchemy licensing website:
www.alchemylicensing.com

OMG
Music

OMG Music, USA.
www.henryhellermusic.com
Guitar picks.



THE WORLD OF 3D

The World Of 3D, UK.
www.worldof3d.co.uk
3D bags, purses, postcards,
prints & more.



SkyBrands AS

Skybrands, Denmark.
www.skybrands.net
Bedding & apparel.



RETRIEVER
SPORTS LTD

Retriever Sports, UK.
www.retrieversports.com
Dart Flights.



Great American Products, USA.
www.dynastydrinkware.com
Drinkware.





ALCHEMY ENGLAND APPAREL

A★E★A
Original Alchemy art with genuine Italian styling
★ALCHEMY ENGLAND APPAREL★

The English veteran alternative lifestyle artists and the genre's pre-eminent designers, Alchemy, in collaboration with Italian streetwear fashion designer & Spanish producers OV, are proud to bring you...

Alchemy England Apparel.

Together we have created a unique and original alternative rock clothing collection for girls and guys with attitude and style. View the full and ever-changing collection at:

www.alchemyenglandapparel.com

And traders, become a stockist and order directly online at:

www.ov-shop.com/en



ALCHEMY[®]™



England • 1977

Alchemy LIFETIME GUARANTEE . . . Alchemy is the best!

And we guarantee our Alchemy England crafted pewter products* to be hand made to the highest standards and of the finest materials, and will therefore repair or replace any such purchased item suffering from defects or faulty workmanship at any time, free of charge!

(*made at our Leicester workshops - please see our Guarantee and Returns Policy at www.alchemyengland.com/guarantee).

Real Pewter!

The metal used in the manufacture of all Alchemy's pewter products is the highest grade "English Pewter". Some manufacturers misleadingly use the term 'pewter' to describe alloys containing quantities of lead, cadmium and nickel plating etc. This is **NON COMPLIANT** and results in inferior, more easily made products which are heavier, softer and of a darker colour and are much more prone to tarnishing and disfigurement. Please note, many imitations and forgeries are also made of zinc, which is cheap and will easily break. English Pewter is the finest grade of pewter, (to BSEN611-1:1995 standard). Traditionally, pewter was a mixture of lead and tin, but today, English Pewter is a rich, high-grade alloy of 92% tin with copper, (plus a few legitimate trace elements), and is regarded as a 'semi-precious' metal valued second only to silver. For jewellery and accessories this is the safest tin-based alloy in use and is fully lead, cadmium & nickel compliant to California Proposition 65 for total lead & cadmium content, Commission Regulation (EU) 494/2011 (REACH) for lead & cadmium and European standard BSEN1811:2011 for nickel. English Pewter is very much harder to craft than zinc alloys and the old and primitive forms of pewter, which contain significant amounts of toxic impurities which ease production, however, please beware as these poor alloys are still used by many manufacturers around the world today.

Brand Protection:

All products, designs and images are the exclusive copyright of Alchemy Carta, England, and are registered designs and trademarks world-wide. Alchemy Studios conceive, research, design and develop all their ideas and products themselves, at considerable cost, to bring you fresh, new creations. Any attempt at forgery, imitation or passing-off endangers Alchemy's existence. Therefore, infringements will result in investigation leading to prosecution. Any assistance from our customers against piracy will be greatly appreciated. Please report via our website.

Looking after your Alchemy

Pewter, like silver, may tarnish, but can easily be polished up to a brilliant lustrous shine, using a brass or silver polishing wad and a wipe with a dry cloth. DO NOT put pewter into a salt-loaded dishwasher, which could corrode a polished surface. Alchemy Guarantee: Alchemy will gladly replace any product proven to be defective.

Trade Memberships

Alchemy Carta Ltd. are proud to be members of the Giftware Association.

Trade & Identification Marks

All products, space permitting, are marked with one or more of the following identification marks, or their derivatives :



© ALCHEMY CARTA LTD.

www.alchemyengland.com



Model is wearing :
E415 Night Queen earrings
P503 Queen Of The Night necklace
Model : **Dragonfly**
facebook.com/Guidragonfly



Disclaimer:

At Alchemy we make all our jewellery by hand. We are very proud and work extremely hard to achieve our high standards. However, we also have to buy-in components from other suppliers and while we do our very best to maintain this quality, we cannot always rely on their availability or consistency. We therefore reserve the right to change crystals, chains and other findings, or even to discontinue pieces if necessary and apologise for any such disappointment.



we lordé qúop þé gēntylé kny3t

whēþer þis bē þé grēnē chāpellē

þé my3t áboucé mydný3t

þé dēlé his mātynnēs tēllē

• OFFICIAL DEALER •