

ROSE ARCANA

A

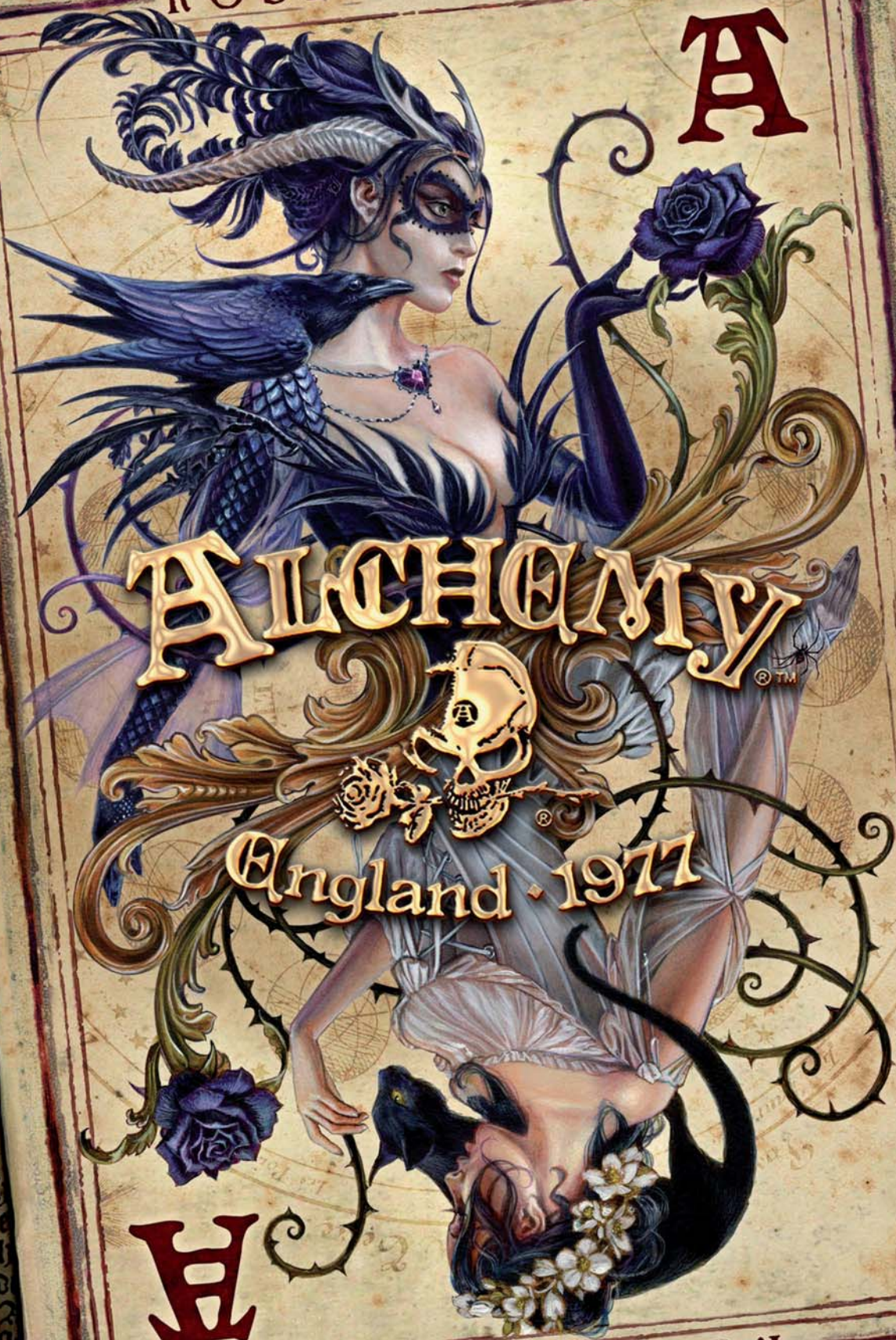
ALCHEMY

England 1977

W

ROSE ARCANA

EXTRAORDINARY DESIGN



• Chap. 1
19.

• Heb. ink
11:17 or 19
1:1.

• Exod. 21
7:11, 13
10:11, 21

h. from
lay
ard

7:21
1:24
1:2

who
fro
the
mon
all t
19
who
word
name
20
sume
which
speake
of oth
shall d
21- 2
how
the L
22
name of

o
d
m
n
fi

E
ha
1
fro
the
mon
all t
19
who
word
name
20
sume
which
speake
of oth
shall d
21- 2
how
the L
22
name of

ing which the
by the world



CONTENTS

Neckwear

Pendants / Necklaces / Chokers / Chains / Neck Thongs . . . 4 - 30

M'era Luna Collection 31

Earrings

Earrings / Ear Studs / Cuff Studs / Ear Wraps
 Faux Stretchers 32 - 41

Rings 42 - 46

Armwear

Bracelets / Bangles / Wriststraps 47 - 53

Timepieces

Wristwatches / Fob Watch / Fob Chain 54 - 55

Buckles & Belts 56 - 57

Accessories

Beard / Hair Beads , Shirt Accessories, Pen 58
 Hair & Dress Accessories, Kilt Pins 59

Drinking Vessels

Absinthe / Glassware / Goblet / Fragrance Diffuser 60 - 61
 Ale Glasses / Tankards / Mugs 62 - 63

The VAULT

Resin Giftware 64 - 73

T-Shirts 74 - 75

Bags

Women's & Men's Bags / Purses / Wallets 76 - 78

Under License Products

Hanging Signs / Playing & Tarot Cards 79

Licensing 80 - 81

Alchemy England Apparel (AEA) fashion 82

Important Info 83

ROSE ARCANA

OR NATIVI AVSUS ET HERMIDIS 2
 MUSEUM & LIBRARY
 THE ALCHEMIST

A DESICCATED PETAL, FALLEN FROM THE GARLAND OF HISTORY.

From the highest shelf of a low and claustrophobic warren of an unremarkable secondhand bookshop, a small, mouldering leather-bound bible tumbles down. Between the pages of Deuteronomy 18:9-12 lies the solitary relic of a hand painted card.

Subsequent research reveals this to be a rare survivor from the tarot deck commissioned by the Earl of Ravenspurgh in the late 17th century and widely thought to represent his wife, Lady Kamila, the Countess of Ravenspurgh. The Earl, who possessed a keen interest in the arcane, was known to be passionately and assiduously devoted to his beautiful and eternally youthful consort, despite her notoriety in the local belief that the Countess possessed both schizophrenic and nocturnal tendencies. An irrepressibly dedicated gardener, Kamila was said to have cultivated her own species of rose of the purest, midnight black, a bouquet of which she personally presented at court to King Charles II.



Cover Illustrations

Front: 'Rose Arcana'. Back: 'Kings Reaper'. © Alchemy 2017/18.

Product Key

N NEW!

Items with this symbol are new products.

† Crystals

The colour of the crystals and gemstones featured within this brochure may vary at point of manufacture, according to availability.

◇ Swarovski Elements

Items with this symbol are made with SWAROVSKI ELEMENTS.

Further Information



Online, at www.AlchemyEngland.com, you will find fuller and extended product descriptions and detail. And in News & Community there, you can go to the dedicated www.alchemygothic.com website, click on the Museum & Library link and find a choice of reference features: full backgrounds and stories behind Alchemy pieces; detailed articles on the symbols, histories and characters of Alchemy Gothic's subjects and designs; view all of Alchemy Studio's artwork; find out who is The Alchemist, and very much more.

† Replacement Glassware

In the case of accidents, a product repair and glass replacement service is available to our customers. For details contact our factory directly : servicedept@alchemygroup.com

Hand Made In England

All of Alchemy England's pewter products are individually designed, modelled and developed in England by the Alchemy Studios creative art and design team. Each individual product is then hand-made with pride from the finest English Pewter by Alchemy's own highly skilled craftsmen, all at our studios and workshops in Leicester, England.

Website

All of the items shown in this catalogue can be seen with many more image views, information and in greater detail on our website, at:

www.alchemyengland.com

For the **Alchemy Lifetime Guarantee**, and **Looking after your Alchemy** etc, please see page 83.

We are a small, fervent team of artists, craftsmen and service crew and we are happily, newly based in our magnificent 18th century mill, outside Leicester, England. From our low beginnings in a one-room bedsit, and after 40 years of belonging to the Alternative Community and privileged to be designing and manufacturing treasures that we can all wear and use, we are humbled by your support, to which we owe our continued existence. Thank you one and all for your enthusiasm towards Alchemy and everything that we enjoy doing; we hope that we will never let you down and that we will be able to satisfy your wishes far into the future.

Gratifyingly yours,

The Alchemist 

POINT OF SALE

Display boards are available for Alchemy's retailers. Dealers please contact the sales team for more details. Boards measure approx: 27.8cm (11") wide X 36.7cm (14 1/2") high.



NECKWEAR

All necklaces and pendants are cast and hand-made in fine English pewter, many with additional high quality crystals, Swarovski Elements and other components. Some feature hand-plating and/or other contrasting finish and all come complete upon either nickel-free chain or other necklace as shown, of appropriate length.

Visit our website www.AlchemyEngland.com for additional views and more detailed information.



For more information behind Alchemy's arcana of subjects, relating to products, symbols, designs and very much more, see "Further Information" on page 3.

Model is wearing -

P818 Kraken necklace

R221 Kraken ring

Model : **Elisanth** - www.elisanth.com

Photo : **Zatsepin Alex** - www.zatsepin-alex.com

Lenses : **Samhain** - www.samhaincontactlenses.com

1 P803 Love Over Death

Pendant

The submerged, gothic Latin inscription reads 'Love shall endure, even in death'; with translucent deep red enamel. **N**

2 P818 Kraken

Necklace

You strain to escape the feel of the monstrous tentacles writhing to take a stranglehold on your neck... Set with a large, Volcano effect, pear-shaped Swarovski crystal. **N ‡** Additional Kraken items - earwrap, E309 page 38 & NEW ring, R221 page 42.

3 P819 Incrowtation

Necklace

The feathers and bones of a raven; essential constituents of a desirous conjuration. With black pewter feathers & polished crow skull. **N**

4 P820 Hydra

Necklace

In Greek mythology the entrance to the Underworld was guarded by the dreaded serpent. With red Swarovski crystal eyes, on an adjustable, double black braided cord necklace. **N ‡**

5 P806 Pègre de les Bois

Necklace

'Woodlands of the Underworld' pervaded by the spirits of Hades. Set with five amethyst cabochons. On two, doubled 7mm wide black satin ribbons. **N ‡**

6 ULFP25 Devil Heart Généreux

Necklace

Saint or sinner? Love, passion and lustful desire are akin. With translucent red enamelled heart & Swarovski crystal highlights. **N ‡**

Additional Devil Heart pendant, page 30, matching ring (page 42) & earrings (page 33) are also available.

7 P807 White Hart, Black Rose

Necklace

The hart's skull and a Black Rose is the spell to invoke arcane and passionate encounters.

An antiqued pewter stag's skull with a rose garland about its horns, the centre one being of black resin. **N**

Shown smaller than actual size



1
P803
Love Over
Death



2
P818
Kraken



3
P819
Incrowtation



4
P820
Hydra



5
P806
Pègre de
les Bois



6
ULFP25
Devil Heart
Généreux



7
P807
White Hart,
Black Rose

Shown smaller than actual size



1
P804
Ivy Cross



10
P811
Draconic
Tryst

**10
P811
Draconic Tryst**

Sweetheart / Couples /
Freindship Necklace

Consorts of darkness collude and
entwine with adamantine embrace,
to belong to one another for
eternity. An interlocking,
separable, two-tone
double necklace. **N**



2
P808
Awaiting The
Eventide



3
P815
Alchemist
Amulet



6
P802
Vampire
Loveheart



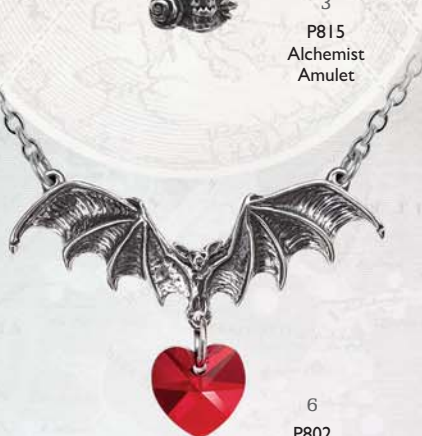
7
P805
Red Curse



4
P801
Santiago
Cross



5
P809
Raven Hammer



8
P816
Cat Sith



11
P810
Triple Goddess

9
P817
Bastet Goddess

**11
P810
Triple Goddess**

Choker

The pearly full moon flanked by
the waxing and waning crescents
invokes healing, occult protection
and wealth. With mother-of-pearl
& Swarovski crystals. **N** †

Shown with matching earstuds,
E401 and ring, R219. Can also be
worn as a bracelet.



E401



R219





- 1 **P804**
Ivy Cross
Pendant
The passing of time obscures a heartbreaking truth...
Set with Swarovski Dark Rainbow crystal. **N** ‡ ✦
 - 2 **P808**
Awaiting The Eventide
Pendant
A roosting vamp, silent and motionless, hungrily awaits the dusk. **N**
 - 3 **P815**
Alchemist Amulet
Pendant
A neatly discreet version of the Alchemist's skull talisman on his 40th Anniversary. **N**
 - 4 **P801**
Santiago Cross
Pendant
The charge of the 12th century knights, The Order of St. James of the Sword; with hematine cabochon. **N** ‡
 - 5 **P809**
Raven Hammer
Pendant
The combined magic of Odin's steadfast servants and Thor's mighty, crushing hammer; contrasting two-tone finish. **N**
 - 6 **P802**
Vampire Loveheart
Necklace
Telling of an enigmatic union between two deviant paramours. With suspended Swarovski crystal heart. **N** ‡ ✦
 - 7 **P805**
Red Curse
Pendant
A powerful Evil Eye amulet to ward-off unmindful, malevolent curses; set with red taxidermal eye. **N**
 - 8 **P816**
Cat Sith
Pendant
Superstition and folklore pervade the mysterious black cat, known in Celtic mythology as the fairy Cat Sith. Black pewter pendant inset with Swarovski Siam crystal eyes. **N** ‡ ✦
Cat Sith ear wrap & hair slide can be found on pages 36 & 59.
 - 9 **P817**
Bastet Goddess
Choker
The Egyptian warrior goddess, protectress and moon goddess. Set with pair of red taxidermal eyes & ear bell adornment. **N**
- Model is wearing :
Complete Triple Goddess range; choker, earstuds & ring.
Model : **Mahafsoun**
www.facebook.com/MahafsounArt



THE EMPRESS

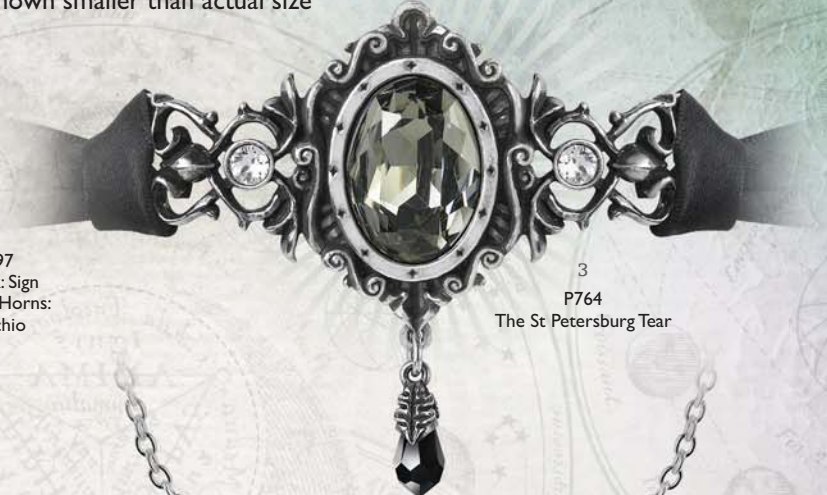
Shown smaller than actual size



1
P229
Wolverine
Moon



2
P797
Maloik: Sign
Of The Horns:
Maschio



3
P764
The St Petersburg Tear



4
P792
Affaire
du Coeur



5
P796
Maloik: Sign
Of The Horns:
Femmina



6
P794
Le Phantom
Vert



7
P790
Glistercreeper



8
P788
Wolf Macht



9
P800
Passio: Wings
Of Love



11
P791
Ring O' Roses

11
P791
Ring 'O Roses
Necklace
A devotion wreath for
an inexplicably dark and
mysterious love. †

Shown here with NEW,
matching earrings, E398.



10
P795
Mesukmus

- 1 **P229**
Wolverine Moon
 Pendant
 Beware the full moon and the silver dagger; with two moonstones. ‡
- 2 **P797**
Maloik:
Sign Of The Horns:
Maschio
 Pendant
 The 'Sign of the Horns' ancient amuletic protection against bad luck and the evil eye and the classic salute in rock cultures.
- 3 **P764**
The St Petersburg Tear
 Choker
 A gem, cut from the heart turned to ice, of the royal mistress to the Emperor of Russia. With large black diamond Swarovski crystal and jet dropper. ‡ 
 Matching bracelet, page 51.
- 4 **P792**
Affaire
du Coeur
 Pendant
 A dark and Delphic romance of the heart between two strange and exotic creatures. ‡ 
- 5 **P796**
Maloik:
Sign of The Horns:
Femmina
 Necklace
 The 'Sign of the Horns' ancient amuletic protection against bad luck and the evil eye and the classic salute in rock cultures. ‡ 
- 6 **P794**
Le Phantom Vert
 Necklace
 The phantom of Absinthe, haunting the artistically intoxicated intellect. ‡ 
- 7 **P790**
Glistercreep
 Pendant
 Petrified exoskeleton of a grotesquely repellent arthropod. ‡ 
 See page 33 for matching earrings.
- 8 **P788**
Wolf Macht
 Pendant
 The symbol of power from the wolf's fang is understood by all. With black pewter 'tooth'.
- 9 **P800**
Passio:
Wings Of Love
 Pendant
 Gothic love; the angel meets the demon, and hearts collide; interlinked, two-tone pewter.
- 10 **P795**
Mesukmus
 Necklace
 A gratuitous commemoration of 'Sweet Death' from ancient Kabbalistic, Hebraic mysticism and delivered by the dark angels. ‡ 

Model is wearing -

P795 Mesukmus Necklace

Model: **Dragonfly**
www.facebook.com/GuiDragonfly

Shown smaller than actual size

**P530
Passion**

Necklace

A twisting knot of sacred thorns, weeping tears of blood-red Swarovski crystal.

‡

Matching ear-wrap, ring and bracelet (pages 39,44 & 52).

**P758
Black Rosifix**

Pendant

The tangled cross of deep devotion, passion and eternal mystery.

‡

**P771
Epiphany Of St. Corvus**

Necklace

The dove of peace and love conjoins with the raven of conflict and battle, harmonising in romantic salvation; two-tone pewter with contrasting white & jet Swarovski crystals.

‡

**P739
Harbinger**

Pendant

Black: black as a young raven with a black rose, hanging from a black ribbon; be wary of the herald that wears this token! On black satin ribbon with Swarovski dropper.

‡

**P630
Bed Of Blood Roses**

Necklace

The heart is the seedbed of tangled emotions and condemned romance; black roses flourish in the heart's blood. Swarovski crystals sparkle from beneath the blood red enamel.

Matching earwrap (E329, p.39), earstuds (E332, p.41) & watch (AW22, p.54).

‡

**P756
Aethera Dragon**

Pendant

The Ether Dragon, pagan guardian of the fifth element also known as 'the spirit'.

‡

**P598 ▲
Kiss The Night**

Pendant
Discreetly tokening the owner's alternative tendencies.

**▲P597
Om Strygia**

Pendant
A vampire bat of Balkan severity and proportions.

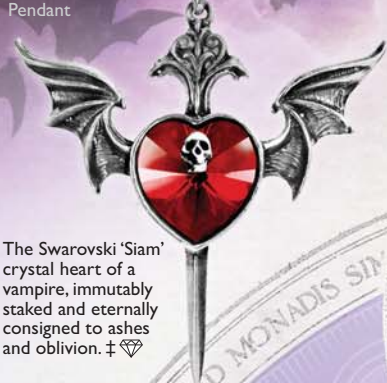
**▲ P158
Vampyr**

Pendant
Vision of the nocturnal nightmare.

**P600 ▶
La Nuit**

Pendant
A crystal luxuriance on the wings of the night; with Swarovski teardrop crystal.
‡ ♦

**P495
Death Of A Vampire**



The Swarovski 'Siam' crystal heart of a vampire, immutably staked and eternally consigned to ashes and oblivion. ‡ ♦

**P803
Love Over Death**

Pendant
The submerged, gothic Latin inscription reads 'Love shall endure, even in death'; with translucent deep red enamel. **N**



**P695
The Romance Of The Black Rose**

Pendant
The most desired and most unattainable bloom known to man - an impossible dream! On 18" chain.



**◀AW26
Temp de Sentiment**

Pendant / Fob Watch
The key to happiness and contentment is so often found in the memories of past loves and times gone by... With 24mm dia. quartz movement. ‡ ♦



**P609 ▼
Diamond Heart**

Pendant
An accursed black dragon, with the heart of a diamond; a metaphor for a dangerous relationship, or else a powerful ally? Set with eleven Swarovski crystals. ‡ ♦



·LOVE OVER DEATH·



Model is wearing -
P803 Love Over Death Pendant
E332 Hearts Blood Ear Studs
Model: **Dragonfly**
www.facebook.com/GuiDragonfly



Model : Genevieve
Photo : Alternate History Photography

Model is wearing :
P785 Wiccan Goddess Of Love Necklace
Holding :
V1 Omega Skull Resin Skull

·QUEEN OF PENTACLES·

Shown smaller than actual size

P786 ▶
Wiccan Elemental Pentacle
Necklace



The five elements conjoined within the circle of the universe. ‡ ✦

P785 ▶
Wiccan Goddess Of Love
Necklace

The Triple Goddess in phases of the moon, stimulating spirituality, love, romance, passion and sexuality. ‡ ✦



◀ P769
Voodoo Doll

Pendant
Of ancient European origin, the traditional way to destroy a witch's power; with black cord noose & chained pewter piercing pin.



P761 ▶
Pentagramatron
Necklace

The most powerful of supernatural, magical talismans, the pentagram, multiplied; with translucent purple enamel and set with 5 Swarovski amethyst crystals. ‡ ✦



▲ P365
Crystal Pentagram
Pendant
Swarovski crystal-set, magical star of protection. ‡ ✦



◀ P798
Masque Of The Black Rose
Necklace

A sensual relic from the legendary vampire's ball at Rovine Palace, Wallachia, 1867. ‡ ✦



▼ P766
Planchette

Pendant
The spiritualist's device for communicating with the dead... ICU. Set with a realistic taxidermal eye. Coordinating items, pages 34 (earstuds), 42 (ring) & 51 (bracelet).

Front



Back



▲ P768
Cunning Heart
Necklace
A white witch's talismanic hex for the attraction and protection of romantic love.



▲ P793
Gothik Tree Of Death
Pendant
The third incarnation of the World Tree; the reality of mortal finality!



▲ P787
Entropassio
Necklace
True passion unleashed with the chaotic force of entropy. ‡ ✦

Shown smaller than actual size

1
P762
The Shadow
Of Zennor

2
P577
Bestia Regalis

3
P753
Stryx

4
P751
Geistalon

5
P780
Hand Of
Macbeth

6
P772
Draig O Gariad

7
P711
Crystal Heart

9
P726
Dogaressa Choker

8
P777
Uniskull

10
P712
Empyrean Eye

9
P726 ▶
Dogaressa Choker

Choker
The Dogaressa of Venice, wife of the Doge of a crumbling empire. From the rich regalia of office, a last token of forlorn devotion to the bereaved Renaissance Lady of the Palace. On a black satin hand-tie ribbon. ‡

Shown with matching items, R199 & A104 The Dogaressa's Last Love Ring & Bracelet (pages 42 & 51)

10
P712 ▶
**Empyrean Eye:
Tears From Heaven**

Necklace
The eye of God, shedding tears of grief for humanity as he regards the world from the highest firmament; with striking 'Aurore Boreale' Swarovski crystals. ‡

Matching earrings: E350 on page 35.



1 P762
**The Shadow
Of Zennor**

Necklace
The mermaid of Pendour Cove, whose ghost is forever tormented with grief for the loss of her lover. ‡ 💎

2 P577
Bestia Regalis

Necklace
Guardian of the ornate entrance to a gothic sanctum of the otherworld spirits; with articulated wing & emerald Swarovski crystal held by the dragon's tail. Matching earring, E286 page 33. ‡ 💎

3 P753
Stryx

Necklace
Companion to Athena the Greek goddess of wisdom, and an intimately close escort into the underworld. ‡ 💎

4 P751
Geistalon

Pendant
Fear from the darkness - the thundering phantom of an armoured cataphract unicorn.

5 P780
Hand Of Macbeth

Pendant
Beware the seduction of ultimate power...
With black onyx cabochon.

6 P772
Draig O Gariad

Necklace
Distilled romance; wild Celtic passion, fought for and guarded with the strength of a dragon; with black enamel & Bermuda blue Swarovski crystals. ‡ 💎

7 P711
Crystal Heart

Pendant
A pure heart of rainbow-spangled white crystal is set inside a simple foliate frame of Victorian sentiment; Swarovski crystal. ‡ 💎

8 P777
Uniskull

Pendant
The true nature of the legendary unicorn of antiquity reveals a creature of perfect ferocity.

ALCHEMY[®]
England • 1977

Model : Genevieve
Photo : Alternate History Photography

QUEEN OF SWORDS

Model is wearing :
P772 Draig O Gariad Necklace

Shown smaller than actual size



1
P121
Gothic Bat



2
P667
Vampire's
Corset



5
P765
Villa Diodati



6
P757
Villa Diodati -
Chained



7
P701
Viennese
Nights



10
P722
Alter Orbis



11
P723
Heart Of
Cthulhu



9
P703
Frozen Heart



12
P743
Aequicorn

**11
P723
Heart Of Cthulhu**

Necklace
A revealing of the monstrous, crystallised soul of darkness. With faceted Swarovski 'Aurore Boreale' crystal heart. On a 33" trace chain. ‡
Shown with NEW matching Kraken ring (R221, page 42).

**12
P743
Aequicorn**

Pendant
The preserved remains of an elusive, mythical and magical creature of the shallow seas, the famed horned seahorse, identified in Solinus' lost classical bestiary; with Swarovski crystal. ‡



3
P770
Amour
Éternel



4
P702
Herz Leben



8
P763
The Green
Goddess



Model is wearing -
E9 Skeleton Earrings
P722 Alter Orbis Necklace
Model & Photography :
Magda Corvinus
@magda_corvinus

1 P121
Gothic Bat
Necklace
Creature of the night in full flight;
on split chain.

2 P667
Vampire's Corset
Necklace

The wings of a temptress in Parisian art nouveau, crystallised in shades of dusk, when the sybarites come out to play; laced with black ribbon fitting & bedecked with Swarovski Indicolite crystals and dark secrets. On 18" chain. ‡ ❖

3 P770
Amour Éternel
Pendant

The Ankh combined with the heart to form a powerful talisman for everlasting romance; with Swarovski silverlight crystal & black enamel. ‡ ❖
With matching ring, page 42.

4 P702
Herz Leben
Pendant

A gothicised symbol of eternal life, the ankh, melded subtly with the background heart and prominently surmounted by a sumptuous amethystine gem; with Swarovski crystal. ‡ ❖

5 P765
Villa Diodati
Necklace

Flitting through the silent candlelit darkness of the lakeside manor, the creature gives rise to the birth of Dracula.

6 P757
Villa Diodati - Chained
Necklace

With jet Swarovski dropper. ‡ ❖

7 P701
Viennese Nights
Necklace

The decorous Renaissance scrollwork is subtly fashioned in the form of the quintessential creature of the night; with bat bodies of black Swarovski crystals. ‡ ❖
Matching bracelet page 52 & earstuds page 41.

8 P763
The Green Goddess
Necklace

Inspiration to poets, artists and intellectuals, and known to Aleister Crowley as the Green Goddess absinthe. ‡ ❖

9 P703
Frozen Heart
Necklace

Dripping from the wings of love, a cold and frozen heart. Set with a diamond shape of pale blue Swarovski crystals & suspending a matching blue crystal heart. On a 18" trace chain. ‡ ❖

10 P722
Alter Orbis
Necklace

A pitifully brutal end to mortal existence, and an exquisite entry into the "Other World". Shown with E9 Skeleton earrings.





Model : Genevieve
 Photo : Alternate History Photography

Model is wearing :
 P656 Amon-Ra Necklace
 R201 Rabeschadel Ring
 RI45 In Memoriam ring
 AI17 Ouija Eye Bangle



P618 ▲ Osbourne's Cross

Pendant
 Sign of a priest of darkness;
 with black enamel.



P705 ▲ Maryam Theotokos Ring Cross

Necklace
 A strange and secretive pendant found in the 19th century amongst the ruins of Coustaussa Castle, Languedoc. It is impossibly encircled by a gold ring, both it and the cross being inscribed with mysterious Latin riddles. †



P734 ▲ Black Talon

Pendant
 The foreboding claw of the corvus corax, clutching a sanguinary, marbelised glass orb to scry for telling omens; with freely rotating blood splattered 'dracula' sphere. †

Shown smaller than actual size



P640
She Walks In Beauty

Choker
A Delphic and lamentable line from the pen of the inimitable Lord Byron, but for whom...? The impressively mounted central black onyx stone is encircled by Byron's brass-etched poem; on black lace choker, with 2-tone pewter, black onyx cabochons & Swarovski jet teardrop droppers. ‡



P656
Amon-Ra

Necklace
The ancient Egyptian god of creativity and fertility, astronomically related to the constellation of Aries; two-tone, with Swarovski crystals and dropper. ‡



P752
Rabeschadel Kleine

Pendant
A token of the great black bird, famous for its prophetic powers and capable of foretelling death. With matching ring, page 42.



P501
Chaosium

Necklace
A shimmering, metallic hematite cabochon forms the nucleus of this mystery-shrouded symbol of anti-order; the eight arrows of chaos. ‡



P252
Wolf

Pendant
The chilling sound of crying at the moon; black pewter with pearlescent white enamel.



P760
Ghost Seer

Pendant
The supernatural raven, Otherworld guide and trainer of magic to the sage and the clairvoyant.



P715
Ruah Vered

Pendant
The spirit and the 'Breath of Life', entwined with the romantic and sensual rose of faithful love. On a 21" trace chain. See also Ruah Vered earrings, page 33.



P650
Chaosagram

Pendant
The pentagram is The Spirit, the chaos star, the reign of disorder and therefore, behold the symbol of belief in the self-determination of the independent mind; pewter and black enamel.



P779
ChaoCrucis

Pendant
The cross of faith combined with the pre-eminent star of chaos. Two-tone pewter with black hematite cabochon. ‡



P719
Seraph Of Darkness

Necklace
The Seraphim, the celestial angels ordained to bestow charity and to protect God's throne. With black oval cabochon and matching Swarovski crystal dropper. On a 20" doubled, split trace chain. ‡

Shown with matching earrings E351.



P736
Rabeschadel

Choker
German for 'raven's skull'; the great black birds are famous for their prophetic powers and as the eyes and ears of Odin. On black silk ribbon for hand-tying. Shown with alternate view.

‡ Specified crystal colours are subject to availability and may be substituted.

Shown smaller than actual size



1
P740
Wounded Love



2
P550
Bleeding Heart



3
P746
Blood Heart



4
P773
The Black Swan
Romance



5
P700
Bacchanal Rose



6
P781
Claddagh By Night



8
P725
Love Is King



8
P725
Love Is King

Couples Friendship Necklace

A sword through the heart, betokening love conquered and a forever-bond. The sword withdraws from the Swarovski crystallised heart for the two to be worn separately as tokens of betrothal. The heart is on a 22" black ribbon & the sword, a 21" curb chain.

Pictured with alternate views showing the two separate necklaces and the sentimental quotation engraved upon the combined pieces. † ♡

LOVE RULES
HIS KINGDOM
WITHOUT A
SWORD

LOVE IS KING



7
P721
The Blood
Rose Heart

ALCHEMY
England · 1971



9
P759
Lucky In Love

9
P759 ▲
Lucky In Love
Necklace

A magical and fortuitous union between the Ace of Hearts and the Ace of Spades. ‡ ♦

1 P740
Wounded Love
Choker

A barbed and gaping hole is left bleeding, where there was once a dark and mysterious romance; with black acrylic rose on black velvet choker. Shown with matching earrings - E365. ‡ ♦

2 P550
Bleeding Heart
Necklace

A cascade of crystal blood pours from the cruel wounds of a tortured love; adorned with Swarovski crystal droppers. Shown with matching earrings, E272. ‡ ♦

3 P746
Blood Heart
Necklace

The female corsair, amorous she-wolf and destroyer of men's hearts; red enamelled heart with two acrylic roses on black ribbon.

4 P773
The Black Swan Romance
Necklace

The rarest of all affairs; highly unlikely, impossible to predict and with the most momentous effect.; polished highlighted black pewter with siam Swarovski crystal heart. ‡ ♦

5 P700
Bacchanal Rose
Necklace

A sumptuous necklace with a romantic motif hiding, or revealing, a secret libertine passion for wine and sensual pleasures; with black acrylic roses & Swarovski crystals. ‡ ♦

For companion earrings E347, see page 34, & bracelet A106, page 52.

6 P781
Claddagh By Night
Choker

Love, Friendship and Loyalty vouchsafed from the underworld; with siam Swarovski heart crystal and on black satin ribbon. ‡ ♦

Matching ear studs, ring & bracelet (pages 41, 42 & 51)

7 P721
The Blood Rose Heart
Necklace

A dark romance secretly blossoms from the life blood of a once broken heart; with Swarovski crystals set beneath the red enamel blood. ‡ ♦

The understated companion piece to P630 Bed Of Blood Roses, specially designed for everyday wear. Matching earwrap (E329, page 39) & watch (AW22, page 54).

Model is wearing -
E272 Bleeding Heart Earrings
R210 Claddagh By Night Ring
P781 Claddagh By Night Choker
A114 Claddagh By Night Bangle
Model : La Esmeralda
www.facebook.com/Alternative.Model.La.Esmeralda
Photo : Silver Pearl Photography

Shown smaller than actual size

▼ P718
Key To The Secret Garden

Necklace

Shrouded in mystery, could this be the key to life itself? Set with a large emerald-green Swarovski crystal and matching droppers. On a 21" trace chain. ‡



▼ P432
Emerald venom

Necklace

The deadly predator, poised to sink its irresistible fangs; with two Swarovski crystals. ‡



▲ P526
Absinthe Fairy

Necklace

The spirit of wormwood rises from the absinthe-green enamelled visage of mortality; with Swarovski crystal. ‡



▲ P775
Black Star

Pendant

Supernatural forces leech from the Stygian pentacle; with black enamel.

Coordinating earrings E395, page 33.



E169
Matching
Black Widow
earstuds
(see page 41).



P503
Queen Of The Night

Necklace

The antipathy of the ancient Iranian prophet sage Zoroaster's 'Moral Order'. A flamboyant Swarovski crystal-laden baroque extravagance representing opulence and decadence. ‡

Shown with matching earrings (E273).



P517
La Fleur de Baudelaire

Choker

Paris' celebrated C19th 'gothic' poet, visionary and champion of the supernaturally creative powers of absinthe; with Swarovski crystals and elegant, bow-tied black ribbon. ‡

Matching earrings E273, page 33 and bracelet A69, page 51.



R120 Absinthe Fairy Spirit Crystal Ring complements both P503 & P517.



P341
Orthodox Icon Locket

Pendant / Locket

Photo locket in the authentic, classic style of an Eastern Orthodox Church icon. The front is set with an impressive, black oval Swarovski crystal and has brass hinges and fasteners. To take two 20 x 30mm size pictures. ‡



P767
My Soul From The Shadow

Necklace

A forlorn young lover's desperate search for reason and hope after the tragic loss of his beloved; on black satin ribbon and set with Swarovski tanzanite & black crystals. ‡

Shown with matching earrings E380.



▲ P607
Sucre Vert Absinthe Spoon
 Pendant
 Green Sugar: a miniature wearable token of a secret life; an Alchemy absinthe spoon, signifying an existence dedicated to hedonistic pleasure and sublime aestheticism; set with large, limpid Emerald green Swarovski crystal.
 ‡



▲ P776
Clutching Life
 Pendant
 Death, grasping at anything seen to glow with the light of life.... With amethyst glass orb.



▲ P742
Keepers Of The Tyrian
 Pendant
 A precious, Tyrian Purple 'pearl', caged and protected by its immortal keepers, as the ancient Phoenicians prized its hallowed properties throughout antiquity; with amethyst glass ball and Swarovski crystals on 32" chain. ‡

◆ Made with -
 SWAROVSKI ELEMENTS

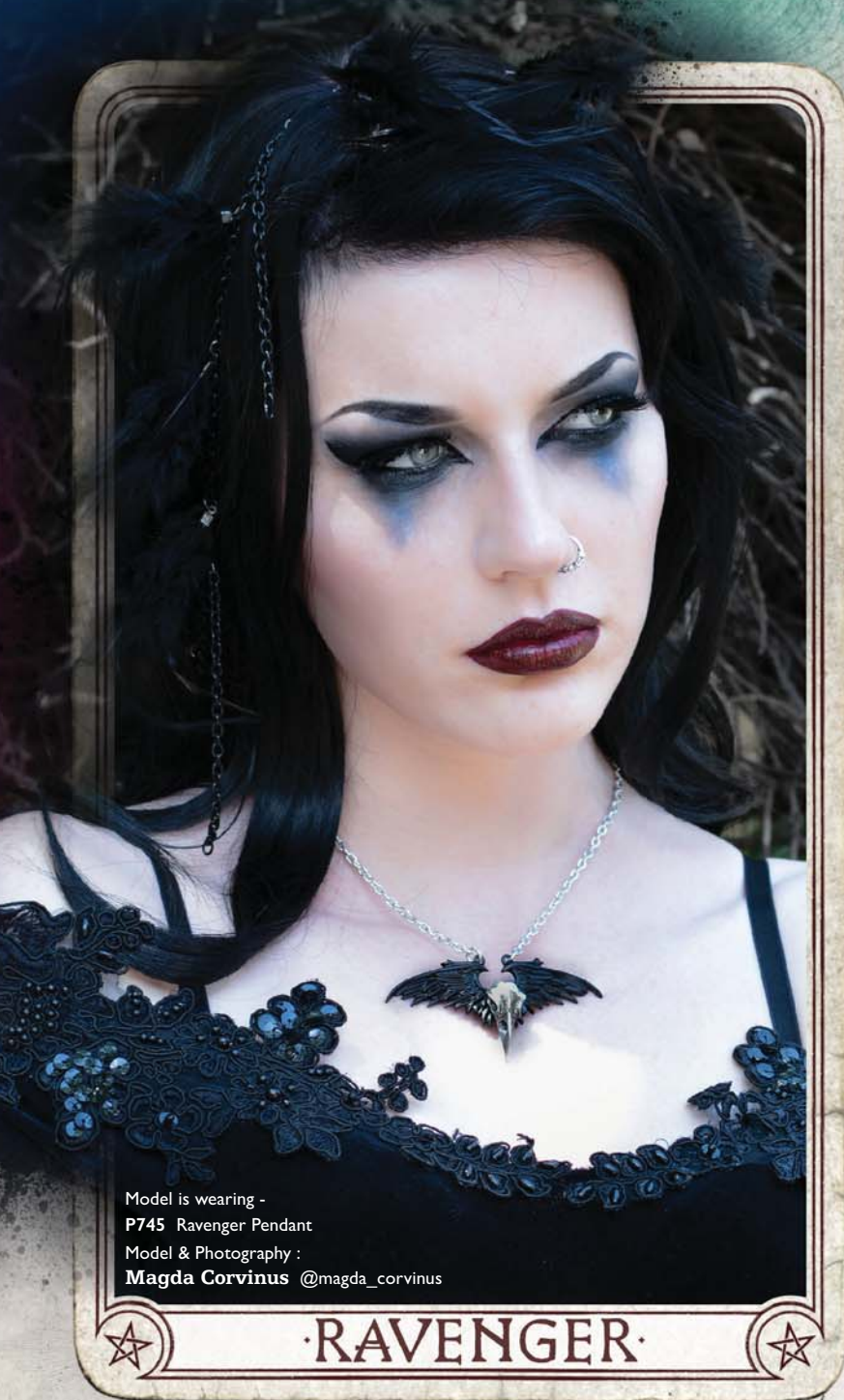
·XIII·



Model is wearing -
 P767 My Soul From The Shadow Necklace
 E380 My Soul From The Shadow Earrings
 Model : Obsidian Kerttu
<https://www.facebook.com/ObsidianKerttuOfficial/>
 Photo : Nevena Mitrovic
<https://www.instagram.com/nena.mit/>

ALCHEMY
 England · 1877

·LA MORT·



Model is wearing -
P745 Ravenger Pendant
 Model & Photography :
Magda Corvinus @magda_corvinus

☆ **RAVENGER** ☆

Shown smaller than actual size



P124 Medieval Pentacle
 Pendant
 In the Middle Ages, the most common sign to ward off demonic powers; gilt two-tone with blue cabochon and Swarovski crystal. ‡



P697 Ravenine
 Pendant
 The raven, an ancient symbol of protection, information and dark secrets. On 18" chain.



P698 Gothic Devotion Cross
 Necklace
 One of the most potent and widely used amulets in the world, the Apostle's Cross. On 18" chain.



P183 Nosferatu's Rest
 Pendant
 Encapsulated in a smoke glazed pewter coffin, the Prince is viewed in his matinal retreat.



P452 La Mort de Coeur
 Pendant
 Tragic death of the heart; set with Swarovski crystals. ‡



P446 Coeur Sauvage
 Necklace
 Conflicting beauty and duality of the heart; with Swarovski crystal. ‡



P235 Dante's Hex
 Pendant
 Mediaeval style pentagram.



P397 Illuminati Cross
 Pendant
 Rome: The Angels of Bernini steer the sacred path of light through the altars of science; set with Swarovski crystals. With 50mm extender chain. ‡



**P447
Blood Moon**

Pendant
A skein of bats flitters about this deep and sinister portent.



**P193
Black Raven**

Pendant
In two-tone, blackened pewter with polished mount. The Raven, the C. 20th symbol of the undead; on 27" ball chain.

Companion earrings page 34 & hair slide, page 59.



**N182
Speculum**

Neck Thong
The Latin inscription reads: "All things change and we with them", the inset mirror revealing the horrifying face of the future.



**P323
The Whitby Wurm**

Pendant
The legendary North Yorkshire servant of the Antichrist rampant.



**P417
Drakonkreuz**

Pendant
Symbol of the obscure, medieval, mystic order and holders of arcane and ancient magical powers; with Swarovski crystals. † ♦



**P346
Anguis Aeternus**

Pendant
The Dragon of Eternity sustains the faceted vitrial crystal of life; Swarovski crystal. † ♦



**N203
Angel Ring
Neck Thong**

Neck Thong
The seven planetary angels are depicted within the enamel, with the reverse side inscribed with their respective names, planets and days.



**P453
The Chemical Wedding**

Pendant
The great metaphysical union of opposites; two-tone pewter.



**P58
Pentagram**

Pendant
Quintessential forces of man.



**P26
The Alchemist**

Pendant
Classic skull of the philosopher; black rose two-tone pewter.



**P745
Ravenger**

Pendant
The dark and mysterious phantom; black pewter wings with polished ravens skull. Shown with extra view.



**P233
Cult Of Aset**

Pendant
Translucent red enamelled solar disk, horned and throned, of the great Egyptian and universal Goddess.



**P342
Gothic Ankh**

Pendant
A vampiric hybrid of the Egyptian symbol for eternal life and the stylistic form of High Gothic; Swarovski crystal. † ♦

**P221
Ankh Of The Dead**

Pendant
Vampyre's talisman of eternity, incorporating its secret life-blood blade inside the symbolic scabbard; in antique silver-coloured pewter.



ANKH OF THE DEAD



1
P708
Coeur Du
Morteur



2
P669
Pinkington's
Precision
Warp-Dissection
Shears



ALCHEMY
England · 1971

Model is wearing :
P188 Anguistralobe
P799 Fibonacci's Golden Spiral
Model : Genevieve
Photo : Alternate History Photography

Neckwear shown smaller than actual size. See website for accurate size details.
‡ Specified crystal colours are subject to availability and may be substituted.

Shown smaller than actual size



3
P755
Autokinetic
Literankh



4
P592
Steam
Hammer



5
P799
Fibonacci's Golden
Spiral



6
P671
Septagramic
Coercion
Gearwheel Key



7
P737
Blast Furnace
Behemoth



8
P188
Anguistralobe

- 1 P708
Coeur Du Morteur
Necklace
The heart and soul of a modern, mechanically minded lover, bearing the colour of their life-blood and the intricate workings of their complex mind; tri-tone pewter with Swarovski crystal. †
- 2 P669
Pinkington's Precision Warp-Dissection Shears
Necklace
Pre-emptive nanotechnology instrument for precisely cutting the fabric of time; articulated tri-tone pewter with Swarovski crystal adornments. †

- 3 P755
Autokinetic Literankh
Pendant
A mid-Victorian device for the formulation of life-prolonging conjurations.
- 4 P592
Steam Hammer
Pendant
Level mountains in a single blow, with the patent, new "Mjollnir of the Modern Age"! With copper & gold-plated pewter.

- 5 P799
Fibonacci's Golden Spiral
Pendant
Decoded by Fibonacci in the Middle Ages for the future exploitation of Dr. von Rosenstein and our Renaissance forefathers.
- 6 P671
Septagramic Coercion Gearwheel Key
Pendant
Obviously, a secure launch key from a highly advanced travel-machine, with its mechanised and coded seven-lever bit; two-tone pewter & brass wire.

- 7 P737
Blast Furnace Behemoth
Pendant
A monstrous, though benevolent steam-powered mechanical dragon of frightening proportions, representing the might of industrial progress. †
- 8 P188
Anguistralobe
Pendant
Working miniature of an 18th instrument to measure the direct path of destiny between specified heavenly bodies; pewter and brass.



**VAP2
Mjollnir**

Pendant
Thor's magical war-hammer.



**P338
Bindrune Hammer**

Pendant
Viking Thor's Hammer, with runes commanding energy, courage, virility and conquest.



**P754
Skullhammer**

Pendant
A deathly interpretation of Mjollnir, the skull-crushing hammer of Thor.



**P625
Dragon Skull**

Pendant
Primitive ferocity unleashed.



**P789
Thorsblade**

Pendant
The steel and bronze lightning bolt of the great Norse storm god, Thor.



**P696
Thor's Hammer Amulet**

Pendant
An amulet to Thor, to wear for protection, strength, healing and fertility. On 18" chain.



**P728
Amber Dragon Thorhammer**

Pendant
A classic, ornate and highly intricate pagan amulet of power and protection, fit for a high ranking Saxon or Viking leader, set with polished, translucent, 30 million year old amber. On a 21" trace chain. ‡



**P774
Jormungand**

Neck Thong
The Norse legend of Jörmungandr, the 'Midgard' or World Serpent is the greatest ouroboros.
Belt buckle & T-shirt also available. See pages 57 & 75.



**P190
The Lost Soul**

Pendant
The pitiful tortured remains of a hapless nobody.



**P686
Black Trinity Trident**

Neck Thong
The three-pronged fork of the demons, signifying the wearer's intent to cast darkness over all before him.



**P709
Satan's Key To Hell**

Pendant
The master of evil and temptation seduces you into the ways of sin, with unfettered access through the gates of The Underworld.



**P730
Bushido**

Pendant
The seven virtues of the Samurai warrior, engraved down the length of the Katana's blade.

Shown smaller than actual size



**P146
Chaostar**

Pendant
The compass symbolising the virtues of Chaos.



**P731
Capitaneus**

Pendant
Head of the tribe in the ages of darkness, long since lost to the mists of time.



**P617
Black Knight's Cross**

Pendant
Awarded for dastardly deeds; with trans black enamel, on black curb chain.



**P623
Pentagrations**

Pendant
Magically intoned icon of power. On a black curb chain.



**P296
Reaper's Arms**

Pendant
Harvester of Sorrow and the badge of fate.



**P687
Helm Of Awe Ravenskull**

Neck Thong
This raven's skull has been engraved upon its head with the Icelandic stave symbol, 'Aegishjalmur'. On black square leather thong.



**P11
Double Axe**

Pendant
Barbarian warlord's professional trade tool.

**P778
Armageddon**

Neck Thong
The battle at the end of time - the Book of Revelation. Reverse view shows "Armageddon VIXI" engraved into the barrel.



**P750
Shred Attack**

Pendant
The quintessential metal axe.



∞ JORMUNGAND ∞

NEW PRODUCTS AVAILABLE

Buckle BI02 Page 57 T-shirt BT890 Page 75

Shown smaller than actual size



1
ULFP25
Devil Heart
Généreux



2
ULFP20
Devil Heart



3
ULFP24
Unlock My Heart



4
ULFP19
Black Cherry

1 **ULFP25**
Devil Heart Généreux
Necklace
Saint or sinner?
Love, passion and lustful desire
are akin. With translucent red
enamelled heart & Swarovski
crystal highlights. N ‡ †

2 **ULFP20**
Devil Heart
Pendant
Love is sinful, naughty and oh, so
much fun! With translucent red
enamelled heart & Swarovski
crystal highlights. ‡ †
Matching Devil Heart ring
(page 42) & earrings (page 33)
are also available.

3 **ULFP24**
Unlock My Heart
Necklace
Diamond hard and locked like a
safe, my heart is waiting for The
One... Enamelled diamond with
Swarovski crystal skulls. ‡ †
4 **ULFP19**
Black Cherry
Pendant
The stones within each
succulent red cherry are horribly
deceptive! With black & red
ribbon, enamel & red abalone
cabochon. ‡ †
Matching earrings, page 34.



6
ULP46
Triggerhead



7
ULP45
Mercy Cross



5
ULFP1
Swallow Heart

5 **ULFP1**
Swallow Heart
Necklace
Two tattoo-style swallows
holding a red crystal heart;
on fine trace chain. ‡ †
6 **ULP46**
Triggerhead
Pendant
When the head rules the heart,
and the heart is black...

7 **ULP45**
Mercy Cross
Pendant
A Golgothian megalith of a cross,
suggesting Rosicrucian sentiment.
2-tone pewter on adjustable
waxed cord thong.

8 **ULP42**
Flame Brain
Pendant
For those who ROCK!
Fully modelled, iconic 'Gretsch'
style guitar, with etched copper
"Rock 'n' Roll" scroll; on braided
leather thong.

9 **ULP42**
Flame Brain
Pendant
"Idle minds are the Devil's
laboratory"! With red enamel &
on adjustable waxed cord thong.

10 **ULP28**
Let's Rock
Pendant
Fully modelled 50's radio mic
with gold-plated "let's ROCK"
scroll. Check out the secret
rocker hiding in the back! On
2mm ball chain.

11 **ULP43**
Unforgiven
Neck Tie
Coolly and sardonically gracing
the neck of the silent avenger.
On black plaited leather cord.

12 **ULP9**
Tattoo Gun
Pendant
Fully 3-dimensional 2-tone
tattoo gun. With engraved,
copper-plated scroll on antique
silver finish chain.



8
ULP35
Steel Guitar



9
ULP42
Flame Brain



10
ULP28
Let's Rock



11
ULP43
Unforgiven



12
ULP9
Tattoo Gun

Neckwear shown smaller than actual size. See website for accurate size details.
‡ Specified crystal colours are subject to availability and may be substituted.

M'ERA LUNA



ALCHEMY

THE UNIQUE COLLABORATION



THE MAN IN THE MOON COLLECTION

The unmistakable face of the World's greatest Goth & Alternative music festival, M'ERA LUNA, inspired by the classic Georges Méliès 1902 film, 'Le Voyage dans la Lune'.

1 P812
M'era Luna - Man In The Moon
 Pendant

2 A119
M'era Luna - Man In The Moon
 Embossed Wriststrap

3 P813
M'era Luna - Man In The Moon
 Velvet Ribbon Choker
 Can also be tied around the wrist as a bracelet.

4 E399
M'era Luna - Man In The Moon
 Earring Droppers

5 R218
M'era Luna - Man In The Moon
 Ring

6 E400
M'era Luna - Man In The Moon
 Ear Studs

7 P783
M'era Luna Crescens - Tragicom Moon
 Pendant
 A waxing, crescent moon reflecting two skeletal faces of emotional extremes. Double-sided relief modelled skull moon pendant.

8 P784
M'era Luna Evil Clown
 Pendant
 Not for the coulrophobic! The malevolent mien of a fiendish friend. Relief modelled Evil Clown's head pendant.

9 P782
M'era Luna Melie's Moon
 Pendant
 A rare glimpse at the real man in the moon, seen through the thicket's gnarled and twisted branches. Pewter and mirror, relief modelled man in the moon pendant.

10 R213
M'era Luna Evil Clown
 Ring
 Relief modelled Evil Clown's head ring. With engraved shank. (Sizes: W, T, Q)

11 E386
M'era Luna Evil Clown
 Ear Studs
 Relief modelled Evil Clown's head ear studs.

12 E385
M'era Luna Crescens - Tragicom Moon
 Earring Droppers
 Double-sided, relief modelled skull moon earrings.

ALCHEMY
England · 1977

Model is wearing -
Devil Heart collection,
including NEW ULFP25 necklace.

Model : **Elisanth** - www.elisanth.com
Photo : **Zatsepin Alex** - www.zatsepin-alex.com
Lenses : **Samhain** - www.samhaincontactlenses.com


EARRINGS

ALCHEMY ENGLAND

All earrings are cast and hand-made in fine English pewter many with additional high quality crystals, Swarovski Elements and other components. Ear-wires are silver plated and fully compliant; Studs have surgical

steel posts and plastic scroll backs. Earrings are sold singly unless indicated in pairs.

Visit our website:
www.alchemyengland.com
for additional views of all Earrings.

 For more information behind Alchemy's arcana of subjects, relating to products, symbols, designs and very much more, see "Further Information" on page 3.

Shown smaller than actual size



E398 Ring O' Roses
Dropper Earrings (pair)
Remnants of a wreath of rare qualities, intoning dark and mysterious love. **N** † With black pewter roses & Swarovski crystals. To match pendant, P791, page 8.



E395 Black Star
Dropper Earrings (pair)
Supernatural forces leech from the Stygian pentacle. Matching pendant, P775, page 22.



E402 Ruah Vered
Dropper Earrings (pair)
The spirit and the 'Breath of Life', entwined with the romantic and sensual rose of faithful love. **N** Matching pendant, page 19, goblet, page 63 & t-shirt, page 75.



E403 The Sophia Serpent
Stud Earrings (pair)
The Ouroboros, ancient Gnostic symbol of eternity, rebirth and unity. Set with Swarovski crystal eyes. **N** † Also see The Sophia Serpent ring & bangle, pages 43 & 51.



E272 Bleeding Heart
Stud Earrings (pair)
Dripping with bloody Swarovski crystals, betraying the emotional grief inside. With matching necklace - P550, (p.20). †



E378 Hand Of Macbeth
Dropper Earrings (pair)
Beware the seduction of ultimate power... With Swarovski jet hematite crystals. †



ULFE22 Devil Heart
Stud Earrings (pair)
Love, is sinful, naughty and oh, so much fun! With translucent red enamelled heart & Swarovski crystal highlights. † Matching necklace & pendant, page 30 and ring, page 42.



E397 Glistercreep
Dropper Earrings (pair)
Petrified exoskeleton of a grotesquely repellent arthropod. † To match P790 pendant (page 8).



E273 Queen Of The Night
Stud Earrings (pair)
The epitome of wickedness. A Swarovski crystal-heavy pair of Baroque earrings matching their sister necklace - P503, (p.22). †



E380 My Soul From The Shadow
Stud Earrings (pair)
Alchemy's rendition of Edgar Allan Poe's 1845 masterpiece, The Raven. With Swarovski tanzanite crystals. †



E286 Bestia Regalis
Stud Earrings (pair)
Dramatically elegant regal beasts, articulated to attract enviable attention; with Emerald Swarovski crystals. Matching pendant - P577, (p.14). †



E351 Seraph Of Darkness
Stud Earrings (pair)
The Seraphim, the celestial angels ordained to bestow charity and to protect God's throne. Black oval cabochon, with a matching Swarovski crystal dropper. Matching necklace page 19. †

Shown smaller than actual size



**ULFE15
El Corazon**

Stud Earrings (pair)
Flight of the heart; pewter winged earrings carry blue heart Swarovski crystal droppers. ‡



**ULFE20
Black Cherry**

Stud Earrings (pair)
The stones within each succulent red cherry are horribly deceptive! Pewter & 2 colour enamel earrings. Companion necklace, page 30.



**E365
Wounded Love**

Stud Earrings (pair)
A gaping hole is left where there was once a dark and mysterious romance; black pewter rose stud with heart dropper. See page 20 for matching choker P740.



**E346
Elizabethan**

Stud Earrings (pair)
A symbol of a condemned and secret love from the age of Shakespeare. With suspended Swarovski amethyst heart crystals. Companion ring (page 42) & bracelet (page 51). ‡



**E364
Deadskull**

Dropper Earrings (pair)
The desiccated remains of a former human being; pewter skulls suspended by fine chain.



**E363
Sorrow Cross**

Dropper Earrings (pair)
The black cross urdee of abject mourning; black enamel cross with fine black chain.



**E333
Black Raven**

Dropper Earrings (pair)
Dark and sultry companions make sure your admirers do not underestimate your character. Companion pendant, page 25 & hair slide, page 59.



**E371
Machine Head**

Stud Earrings (pair)
Gears of intellectual industry; tri-tone pewter.



**E9
Skeleton**

Dropper Earrings (pair)
It all comes down to this. The last remains of master and slave alike.



**E373
Awaiting
The Eventide**

Dropper Earrings (pair)
Roosting vamps, silent and motionless, await the final vestige of light - so, the raptors may play...



**E377
Clavitraxion**

Dropper Earrings (pair)
The archetypal reflection of steampunk ethos; copper-plated.



**E372
Ankh Of Osiris**

Dropper Earrings (pair)
The Egyptian god Osiris, bequeaths the 'Breath Of Life' upon those to be blessed with immortality. ‡



**E396
Ouija Planchette**

Stud Earrings (pair)
The spiritualist's device for communicating with the dead... ICU! Set with a realistic taxidermal eye. See matching pendant (page 13); ring (page 42) & bracelet (page 51).



**E310
Marie Antoinette**

Stud Earrings (pair)
Miniature guillotine blades, bearing the last traces of aristocratic life; with Swarovski Siam crystals. ‡



**E347
Bacchanal Rose**

Stud Earrings (pair)
A romantic motif concealing a secret libertine passion for wine and sensual pleasures; with black acrylic roses & Swarovski crystals. ‡ Matching necklace page 20 and bracelet page 52.



**E367
Wings Of Eternity**

Stud Earrings (pair)
From the symbol of everlasting life and love, the delicate Baroque-laced wings drip with Swarovski crystal promise. ‡

ALCHEMY
England · 1971



**E350
Empyrean Eye:
Tears From Heaven**

Stud Earrings (pair)
The eye of God, shedding tears of
grief for humanity as he regards the
world from the highest firmament.
With striking 'Aurore Boreale'
Swarovski crystals. ‡

Matching pendant - P712, (p.14).

Model is wearing -
E350 Empyrean Eye Earrings
P712 Empyrean Eye Necklace
Model : La Esmeralda
www.facebook.com/Alternative.Model.La.Esmeralda
Photo : Silver Pearl Photography

·EMPYREAN EYE·

Shown smaller than actual size



E391
Devil's Den
 Stud Ear-Wrap
 (Right)
 A demon's undertone
 belies your better
 judgement.

♠ · DEVIL'S · DEN · ♠

E389 ▶
Fairy Grove
 Stud Ear-Wrap
 (left)
 A whispering
 fairy familiar,
 your constant
 friend and
 benevolent
 guide.



♂ · FAIRY · GROVE · ♀

E387 ▶
Icarus
 Stud Ear-Wrap
 (left)
 "True hope is
 swift, and flies
 with swallow's
 wings" as
 Shakespeare
 submits.



⚙ · ICARUS · ⚙

E374 ▼
**Daughters
 Of Darkness**
 Stud Ear-Wrap (right)



Seven grieving sisters turned
 into heavenly stars; the winter
 constellation known as the
 Pleiades. † ♦

E392 ▼
Nocti-Dame
 Stud Ear-Wrap (left)



A black and demonic
 gargoyle companion.
 † ♦

E263 ▼
Sylvanus
 Stud Ear-Wrap (right)



In Roman mythology, Sylvanus is
 god of the woods. This ornate,
 baroque ear-covering is
 supported by a chain behind
 the ear; Swarovski Siam crystals.
 † ♦

E330 ▼
Crystal Dragon
 Faux Stretcher Ear-Wrap (right)



With dramatically outstretched
 wings, the writhing dragon flaunts
 its Swarovski crystal dropper.
 † ♦



◀ **E404**
Cat Sith
 Stud Ear-Wrap (right)
 Superstition and folklore pervade the
 mysterious black cat, known in Celtic
 mythology as the fairy Cat Sith. **N**
 Shown with Bastet Goddess choker
 (P817, page 6) & Cat Sith pendant
 (P816, page 6). Matching hair slide
 also available (HH11, page 59).



ALCHEMY
 England · 1971

EAR WRAPS



Created and developed by Alchemy from 2006, 'stud ear wraps' are a unique concept which decorate the whole ear, wrapping around it and fixing in place with a regular surgical lobe-stud. It is critical that the wrap can be formed to fit the ear properly, as no two ears are alike in size or shape. Alchemy's ear wraps are made of English pewter which is perfect for gently bending into shape. Cheap imitations will usually not bend, but snap, or are too heavy for comfort.

Visit our website www.alchemyengland.com for additional views of all Ear Wraps.

For more information behind Alchemy's arcana of subjects, relating to products, symbols, designs and very much more, see "Further Information" on page 3.



Model is wearing :
E391 Devil's Den Ear Wrap
Model : **Jennica Lynnlee**
https://www.instagram.com/jennica_lynnlee/
Photo : **Travis Lilley**
<https://www.instagram.com/travislilleyphoto/>



ARBOREUS
ELF EAR WRAPS

◀ **E390R & E390L**
Arboreus
Stud Ear-Wrap (right & left)
An elf's ear of swirling Victorian verdant flourishes. Available in both right & left ear versions.

Model is wearing:
E390R Arboreus Ear Wrap

Model: **Melanie K**
https://www.instagram.com/frankensteins_cat/

Photo: **Travis Lilley**
<https://www.instagram.com/travislilleyphoto/>

E309
Kraken
Faux Stretcher Ear-Wrap (left)



Enveloped by overwhelmingly powerful and limber tentacles from the deep.
See NEW matching necklace (page 5) & ring (page 42).

E361
Osberg Dragon
Stud Ear-Wrap (left)



Inspired by the intricate, Norse Art wood carving decorating the great, 9th century Viking ship discovered beneath a burial mound in Norway.

E276
Rose Of Passion
Faux Stretcher Ear-Wrap (left)



'The unattainable black rose bleeds for what cannot be'; unique black pewter finish, studded with Swarovski white & 'blood drop' crystals. †

E234
Temptation
Faux Stretcher Ear-Wrap (left)



The serpent of Eden twists through and around the beguiled wearer's ear.

THE DRAGON'S LURE

1 E274R
2 E274B
3 E274L

- 1 **E274R**
The Dragon's Lure
Faux Stretcher Ear-Wrap (right)
Like a whispering shoulder devil, or a witch's familiar, this dragon, piercing through the earlobe, tempts the wearer into acts of shameful depravity.
- 2 **E274B**
Dragon's Lure Black
Faux Stretcher Ear-Wrap (right)
Noir version of the now immortal dragon wrap.
- 3 **E274L**
Dragon's Lure Left
Faux Stretcher Ear-Wrap (left)
A matching, left-ear version of the infamous dragon wrap.



Earrings shown smaller than actual size. See website for accurate size details.
† Specified crystal colours are subject to availability and may be substituted.

Shown smaller than actual size

E376
A Night With Goethe
Stud Ear-Wrap (left)



Nocturnal stirrings, returning from the grave in search of a lost lover, the creature roams.

E355
Raven Ear-Wing
Stud Ear-Wrap (left)



Ready to impart its supernatural intelligence to its master, the black raven raffishly embraces the ear of its owner. Fastened by a surgical steel ear-post.

E287
Passion
Faux Stretcher Ear-Wrap (left)



A bramble of thorns entangles the ear, weeping tears of Swarovski crystal blood. †

See also pages 10, 44 & 52 for coordinating items.

E329
Bed Of Blood Roses
Stud Ear-Wrap (left)



The poetic tragedy of a bleeding heart; with black roses and Swarovski crystals below the enamelled heart. †

Matching necklaces pages 10 & 20, earstuds page 41, & watch page 54.

FAUX EAR STRETCHERS

INTEGRUM ELEGIT VITAE ALIO IMPROBATIONEM INVENIT.
NATVS SVM EX HERMOGENE.

Polished pewter, surgical steel post ear studs for regular pierced ears, with special and thoroughly convincing backs appearing exactly like a stretched ear!



▲ **E280**
Impalare Cross
Faux Stretcher (single)
Pierced by the enduring symbol of sacrifice; black-enamelled cross piercing the earlobe, with surgical steel post.

▲ **E257**
Cesare's Veto
Faux Stretcher (single)
The Cesare Borgia's Florentine solution to all political problems. With Swarovski crystal. †



▲ **E356**
Magic Ram's Horn
Faux Stretcher (single)
Intoned with outrageous Crowleyan symbolism and ritual Pagan intent.

▲ **E321**
Wraith Spine
Faux Stretcher (single)
7mm curved vertebrae with demon's skull end.



▲ **E320**
Tomb Skull Horn
Faux Stretcher (single)
7mm curved horn with plain skull end.

▲ **E324**
Tor Dragon
Faux Stretcher (single)
8mm spine'd tail with dragon's head end.

CUFF STUDS

Shown smaller than actual size

E381
View2

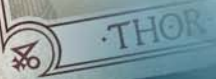


E381 ▶ Thor Donner
Cuff Stud Earring (single)
A Norsemen's miniature Thor's hammer and 'thunder' rune-cuff.

E382
View2



E382 ◀ Rosa Nocta
Cuff Stud Earring (single)
Conjuring the amorous magical properties of a combined pentagram and a black rose.



E349 ▶ Uncle Albert's Timepiece

Cuff Stud Earring (single)
The perfect miniature, 13-hour Lunar time fob watch and its accoutrements from the Victorian era; two-tone copper & pewter with glass imitation watch face.

Also shown, matching ring & cuff links - pages 42 & 58.

R203

CL14

E196 ▲ Pentagram

Cuff Stud Earring (single)
Mystical seal of success.

E278 ▲ Mortal Remains

Cuff Stud Earring (single)
Traces of human existence cling desperately to life.

E393 ▼ Rosemoon

Faux Stretcher (single)
Combining the spiritual energies of the crescent moon, the female principle and the rose of the love goddess, Venus. † †

SINGLE EARRINGS

BACK

FRONT



ROSEMOON

E256 ▲ Hang Man's Noose

Single Stud Earring
The most squalid and degrading of ends to the life of a mortal.

E357 ▲ Bushido

Single Dropper
The seven virtues of the samurai warrior, engraved down the length of the katana's blade.

E221 ▲ Spike Cuff
Single Stud Earring
Piercing statement.

E175 ▲ Wyverex Dragon

Single Dropper
Rare Medieval beast of proven origins and powerful influence.

STUD PAIRS



**E394 ▲
Viennese Nights**
Stud Earrings (pair)
Creatures of the night in Europe's
fabulous den of iniquity. ‡ ✦
Matching necklace (page 16)
& bracelet (page 52).



▲ **E401
Triple Goddess**
Stud Earrings (pair)
The pearly full moon, invoking
healing, occult protection and
wealth. N ‡
Matching choker (page 6)
& ring (page 42).



**E164
Pentagram Studs**
Stud Earrings (pair)
Miniature pentagrams for
magical discretion.



**E252
Matins**
Stud Earrings (pair)
The name of the night prayer
service in the Roman Catholic and
Eastern Orthodox churches and the
time when bats are out to play! ‡ ✦



**E168
Pentanoir**
Stud Earrings (pair)
Hand polished pentagram noir
studs with black enamel fill.



**E353
Industilobe**
Stud Earrings (Pair)
The quintessential cogwheel,
personifying dynamic industrial
and intellectual progress.



**E384
Thor Hammer Studs**
Stud Earrings (pair)
A Norseman jewel-smith's
precision, miniature Thor's
hammer.



**E186
Batstuds**
Stud Earrings (pair)
Discreet aural accents
for the nocturnal hunter.



**E339
Black Rose Studs**
Stud Earrings (pair)
The alchemical mystery personified
by this impossibly rare flower.
Matches E329, or E276 ear-wraps.



**E169
Black Widow Studs**
Stud Earrings (pair)
Worn to demonstrate contrition
or predatory instincts



**E147
Alchemist Studs**
Stud Earrings (pair)
Miniature Alchemist skulls
for Acolytes incognito.



**E342
Mortuarium**
Stud Earrings (pair)
Skulls, staring deeply into the
oblivion of a long-past mortal
existence.



**E76
Death Studs**
Stud Earrings (pair)
Miniature pewter skull studs,
for the discreet fatalist.



**E359
Rabeschadel**
Stud Earrings (pair)
The great black bird, famous
for its prophetic powers, being
Odin's messengers and capable
of foretelling death.



**ULFE3
Tattoo Gun**
Stud Earrings (pair)
Scrolled tattoo gun stud earrings.



**E332
Heart's Blood**
Stud Earrings (pair)
Swarovski crystals glitter just under
the surface of the clear, blood red
enamel. (To match E329 earwrap).
‡ ✦



**ULFE4
Swallows**
Stud Earrings (pair)
A pair of tattoo style swallow
stud earrings.



**E379
Claddagh Heart**
Stud Earrings (pair)
Love and Loyalty from the 17th
century, traditional Irish symbol;
set with Swarovski Siam heart
crystal. ‡ ✦

Shown smaller than actual size



**R216
Stealth**

Ring
Under the cloak of night, the bat crawls towards its intended prey. (Sizes: N, Q, T, W, Y) **N**



**R220
Rabeschadel Kleiner**

Ring
The sinister black bird, famous as Odin's messengers and for their prophetic powers and foretelling death. (Sizes: L, N, Q, T, W, Y) **N**
Matching pendant, page 19.



**R221
Kraken**

Ring
Evil from the deep, tightening its grip about your finger. (Sizes: N, Q, T, W, Y) **N**
Companion Kraken items available; NEW necklace, (page 5) & earwrap, (page 38).



**R219
Triple Goddess**

Ring
The pearly full moon between waxing and waning crescents, invoking healing, occult protection and wealth. With mother-of-pearl cabochon. (Sizes: L, N, Q, T) **N** ‡
Triple Goddess range includes matching choker, page 6 & earstuds, page 41.



**ULFR6
Devil Heart**

Ring
Love, is sinful, naughty and oh, so much fun! With translucent red enamelled heart & Swarovski crystal highlights. (Sizes: N, Q, T,) ‡ **◆**

See companion necklace & pendant, page 30, earstuds, page 33 & bangle page 52.



**R156
Elizabethan**

Ring
Lord Dudley's lost sign of devotion; Swarovski crystal. (Sizes: L, N, Q, T,) ‡ **◆**
See also earstuds, page 34; bracelet, page 51.



**R210
Claddagh By Night**

Ring
Love, Friendship and Loyalty vouchsafed from the underworld; with siam Swarovski heart crystal. (Sizes: L, N, Q, T) ‡ **◆**
See also choker, page 20; earstuds, page 41; bracelet, page 51.



**R145
In Memoriam**

Ring
A silent and sombre dedication expressed in this polished black-enamel, Victorian mourning ring. (Sizes: L, N, Q, T, W,)



**R134
Betrothal**

Ring
A miniature rococo masterpiece of romantic metaphor, with the blood red enameled heart of passion. (Sizes: L, N, Q, T, W)
Companion bracelet (A89), page 52.



**R203
Uncle Albert's Time Piece**

Ring
The perfect, miniature 13-hour Lunar-time fob watch, inscribed with 'Hora Morti' - the 'Hour of Death'. (Sizes: N, Q, T, W, Y)
Companion earcuff, page 40 & cufflinks, page 58.



**R211
Amour Éternel**

Ring
The Ankh combined with the heart to form a powerful talisman for everlasting romance; with Swarovski silverlight crystal & black enamel. (Sizes: L, N, Q, T) ‡ **◆**
Matching pendant P770, page 17.



**R214
Cherish**

Ring
A secret tribute, never to forget the lost, forbidden and dark love known only to you. (Sizes: L, N, Q, T) ‡ **◆**



**R199
The Dogaressa's Last Love**

Ring
A token of forlorn devotion from The Lady of the palace in Renaissance Venice; with suspended blue Swarovski crystal heart. (Sizes: L, N, Q, T) ‡ **◆**
Companion choker (P726), page 14 & bracelet (A104), page 51.



**R190
Starchaser**

Handspan Ring
Gliding gracefully between the clouds, the fantastical creature flies to catch the stars from the sky. Adjustable split ring, partly spanning three fingers. Adjustable Sizes: L - N, (Small), Q - T, (Med) ‡ **◆**



**R215
Ouija Eye**

Ring
Seeing into the past, the present and the future with the unsettling guidance of the spirit board. (Sizes: Q, T, W)
Companion pendant, page 13; earrings, page 34 & bangle, page 51.



**R120
Absinthe Fairy Spirit Crystal**

Ring
A Swarovski emerald pond of illusion and creation. (Sizes: L, N, Q, T,) ‡ **◆**

RINGS

Q NATVS SVM EX HERMOGENE 2
 CETERA NON HABENT OMNIA
 AN TOSTI NOVITIANI

Alchemy Rings are hand cast & made in England from fine English pewter and in many cases including Swarovski Elements, other high quality crystals and additional high quality materials and finishes.

Visit our website www.alchemyengland.com for alternate views of all Rings.

For more information behind Alchemy's arcana of subjects, relating to products, symbols, designs and very much more, see "Further Information" on page 3.

Model is wearing -

R216 Stealth Ring
 P802 Vampire Loveheart Necklace

Model & Photography :

Magda Corvinus
 @magda_corvinus



R206
The Sophia Serpent
 Ring

The Ouroboros, ancient Gnostic symbol of eternity, rebirth and the unity of everything, representing the sun and soul of the world.
 (Sizes: L, N, Q, T, W, Y) ‡

Matching earrings, page 33 & bangle, page 51.



R208
Memoria Mortalis
 Ring

In memory of death, as our forebears so readily observed, with its constant threat to all, pervading every facet of life.
 (Sizes: N, Q, T, W, Y)



R212
Demon Black & Angel White
 Double Ring

On each ring are inscribed seven magical signatures; one of angels, the other of 'demons'. Summon the assistance of the spirits!
 Unique split ring in contrasting light & dark finishes. (Sizes: N, Q, T, W)



R36
Great Wish Ring
 Ring

The Latin inscription 'MEUS OPUS MAGNUS' is the Alchemical spiritual wish for 'The complete fulfilment of life'.
 (Sizes: N, Q, T, W, Y)

Shown smaller than actual size



**R167
Passion Ring**
Ring
The tortuous thorns of self sacrifice bled with tears of Swarovski crystal. Companion pieces: Pages 10, 39 & 52. (Sizes: L, N, Q, T) ‡



**R72
Caput Mortem**
Ring
Three deaths for the auspicious; one death's head for each mortal life. (Sizes: N, Q, T, W)



**R71
Agla**
Ring
Five magical talismans of profit and protection. The central Kabbalistic sigillum "Agla", stands for 'Thou art mighty forever O Lord', with the remaining four seals for love, memory, safety and peace. (Sizes: N, Q, T, W)



**R105
Shadow Of Death**
Ring
Large, deep burgundy, faceted Swarovski crystal mounted in a circle of ivy-grown skulls. (Sizes: L, N, Q, T) ‡



**R124
Angel's Eye**
Ring
His deep, sapphire crystal eye is engraved with the pentagram from the seal of the archangel Metatron. (Sizes: L, N, Q, T, W, Y) ‡



**R154
Wyverex Dragon Signet Ring**
Ring
Guardian of a vampire's nest; dragon encapsulated in a polished black enamel. (Sizes: Q, T, W, Y)



**R86
Draconis Celtica**
Ring
The head of a dragon lurks beneath this pool of a Celtic spring. (Sizes: N, Q, T)



**R23
Roseus Pentagram**
Ring
A classic black enameled pentagram, highly polished and flanked with Alchemical roses of wisdom. (Sizes: N, Q, T, W, Y)



**R44
Dr. Von Rosenstein's Induction Principle Ring**
Ring
In pewter and solid brass, an authentic reproduction of Dr. Von Rosenstein's indispensable key to the induction matrix. (Sizes: N, Q, T, W, Y)



**R73
Deus Et Natura**
Ring
The triumphant harmony of Nature and The Creator. The solid bronze Latin band says 'God and Nature do not work together in vain'. (Sizes: Q, T, W, Y)



**R149
Hi-Voltage Toric Generator Ring**
Ring
Unusual, early but very highly efficient power generator to augment the energy demands of Victorian hi-tech gadgets. (Sizes: N, Q, T, W, Y)



**R24b
Eye Of The Devil**
Ring
Sinister blood red crystal eye, staring down any onlooker. (Sizes: N, Q, T, W, Y) ‡



**R205
Black Consort**
Handspan Ring
The majestic raven, wings outstretched, gliding alongside its adopted squire offering protection and guidance. (Sizes: N, Q, T, W, Y)
Matching wriststrap, page 48.



**R183 ▲
Vis Viva**
Ring
The living power; overwhelming energy and the force of life encircles and liberates the wearer; with Swarovski crystals. ‡
See companion bracelet, page 52.
Adjustable Sizes: Small (L - N), Med (Q - T) & Large (W - Y)



**R123
Broken Heart**
Ring
Double-sided ring of love, pain and sorrow, featuring an enameled heart obscuring a deep-set skull. (Sizes: L, N, Q, T)



ALCHEMYTM

England · 1971

Model is wearing -
R205 Black Consort Ring
A109 Black Consort Wriststrap
E359 Rabeschadel Ear Studs

Model: **Dragonfly**
www.facebook.com/GuiDragonfly







R209
Sub Rosa Poison Ring
Poison Ring



Beneath the rose, (a symbol of secrecy), there may lie a fatal draught of toxin; with hinged lid to secret compartment & Swarovski crystals.
(Sizes: L, N, Q, T) † ♦

·SUB·ROSA·






R204 Necrogram
Ring
Communicating with the dead; the intelligence of this skull transcends its apparent vacancy. (Sizes: Q, T, W, Y, Z1)



R6 Death Ring
Ring
The famous blank, stark expression of the face of death. (Sizes: N, Q, T, W, Y)



R207 Desolation
Ring
The black winged-skull of survival arises from the ashes of destruction. (Sizes: N, Q, T, W)



R201 Rabeschadel
Ring
An authentically detailed raven's skull, in polished pewter and set upon a split ring shank. (Sizes: Q, T, W, Y, Z1)



R50 Celtic Theurgy
Ring
Supernatural powers of the pentagram under Celtic influence. (Sizes: N, Q, T, W)



R171 Thor's Runehammer
Ring
With runes for 'Blood' & 'Thunder'. (Sizes: Q, T, W, Y, Z1)



R173 Runeband
Ring
Nordic runes recite the mantra, 'Poetry is in Battle'. (Sizes: Q, T, W, Y, Z1)



R174 Rination Skull
Ring
Defiance on the face of death. (Sizes: Q, T, W, Y, Z1)



R175 Pentagratiion
Ring
Magically intoned icon of power. (Sizes: Q, T, W, Y)



R122 Omega Skull
Ring
The Alchemist tattooed with his total, all-powerful esoteric knowledge. (Sizes: N, Q, T, W, Y)



R16 Demi Alchemist
Ring
Classic portrayal of the Alchemist, with black rose. (Sizes: N, Q, T, W)



R99 Chaos Signet
Ring
Device of the infamous, maelstromic arrows; black enamel. (Sizes: Q, T, W, Y)



R195 Viking Virility Runering
Ring
The two bindrunes are made from Uruz and Teiwaz, for the fighting strength of a warrior, and Inguz and Gebo for a virile union and partnership. (Sizes: Q, T, W, Y, Z1)



R176 Hell's Doorman
Ring
Ram-horned guardian of the gates of the abyss. (Sizes: Q, T, W, Y)

INTERNATIONAL SIZE GUIDE

English:	L	N	Q	T	W	Y	Z1
American:	6	7	8½	9½	11	12	13
European:	12	15	18½	21	23	27	28
German:	1.7	1.8	1.9	2.0	2.1	2.2	2.3
Japanese:	10	13	16	19	23	25	27

Alchemy's rings are available in various sizes. The sizes stated are intended as a guide only, and are **NOT** always strictly accurate.

DIAMETER RING GAUGE

To gauge your ring size using the circular guide, place a suitably sized existing ring over the size indicators here and choose the closest size to the inner circle.



LINEAR RING GAUGE

To gauge your ring size using the linear guide, wrap a 5mm wide X 10cm long (approx.) strip of paper around the required finger and mark the point of overlap with a pencil. Then lay flat against this linear guide.



Shown smaller than actual size



Alchemy's Armwear items are all hand cast in Fine English Pewter, many with additional high quality crystals, Swarovski Elements and other components.

Leather Wriststraps feature English pewter castings on fine Italian Leather in one adjustable size.

For more information behind Alchemy's arcana of subjects, relating to products, symbols, designs and very much more, see "Further Information" on page 3.

Visit our website www.alchemyengland.com for additional views of all Armwear.



A102
Gears of Aiwass

Wriststrap
Aleister Crowley's incorporeal intelligence and dictator of his transcribed and ultra-complex, sacred text, 'The Book of the Law'. On adjustable leather strap.



A120
Wenig Thunderhammer

Wriststrap
Mjolnir, the Norse god Thor's mighty weapon of utter destruction. A small, antiqued pewter copy of Thunderhammer riveted to a 3/4" wide black leather wrist strap. **N**



ULA7
Carpe Diem

Wriststrap
Classic tattoo skull, dagger, roses & scroll wriststrap, bearing the eternal Latin legend "Carpe Diem". "Seize The Day". One size Adj.



A115
Cthulhu Rising

Wriststrap
The giant god Cthulhu returns from the dead.



A85
Pentagratiion

Wriststrap
Magically intoned icon of power. On adjustable leather strap.



A98
Thunderhammer

Wriststrap
The Norse god Thor's mighty weapon of utter destruction, Mjolnir. On adjustable leather strap.

▲ ULA1
Ace Of Dead Spades

Wriststrap
Italian leather wriststrap with pewter & black-enamelled ace of spades plate, including raised, sculpted death's head. On adjustable leather strap.



1
A105
Rabeschadel
Wriststrap



2
A37
Pentagram Gaelic Strap



3
A109
Black Consort



4
A110
Black Swan

A110 Design etched
into the back of
the crystal



5
A111
Desmodus



6
A97
Pirate Princess



7
A116
Rose Of
Perfection



Model is wearing -
R220 Rabeschadel
Kleiner Ring
P819 Incrowtation
Necklace
A109 Black Consort
Wriststrap

Model : Mahafsoun www.facebook.com/MahafsounArt

* CAUTION: Repeated over-bending of bangles will cause metal to fracture.
Armwear shown smaller than actual size. See website for accurate size details.
† Specified crystal colours are subject to availability and may be substituted.

Shown smaller than actual size

1 A105 Rabeschadel Wriststrap
Wriststrap
The great black bird is famous for its prophetic powers, being Odin's messengers and capable of foretelling death.
On adjustable leather strap.

2 A37 Pentagram Gaelic Strap
Wriststrap
Hand plaited, black leather wristband with pewter pentagram button-fastening.
On adjustable leather strap.

3 A109 Black Consort
Wriststrap
The majestic raven, wings outstretched, gliding alongside its adopted squire offering protection and guidance.
On adjustable leather strap. Matching ring, page 44.

4 A110 Black Swan
Wriststrap
Hidden in the fractal depths of the Swarovski, black diamond crystal, lies the message of love between two beautiful and perfect deviants.
On adjustable leather strap. † ♦

5 A111 Desmodus
Wriststrap
The metaphor to capture that dark and dangerous creature that stalks the night.
One size Adj.

6 A97 Pirate Princess
Wrist Strap
A sexy and feisty flourish from the age of daring grandiloquence. Leather strap with adjustable fastenings & Swarovski crystals.
One size Adj. † ♦

7 A116 Rose Of Perfection
Wrist Strap
An esoteric symbol of divine perfection. Leather strap with adjustable fastenings & Swarovski crystals.
One size Adj. † ♦

8 A29 Vertebrae
Hinged Bangle
The metallised spine of a vanquished predator, forms this hinged, articulated bangle; with safety chain. Size: Medium Adj.

9 A107 Thunder Torque
Bangle
This lordly, iconic torque bangle must be that of a Scandinavian or Saxon pagan noble, won, almost inevitably, by force. Copper-plated finial ends with inset hematite cabochons.
Sizes: Small & Large. † *

10 A118 Portative Spectrostat
Wriststrap
A condensed version of the early scientific instrument for controlling moonlight wavelength emulations; on matt brown leather strap, with antiqued pewter and etched brass.
One size Adj. **N**

11 A93 Killing Fields
Wrist Chain
Assembled from the sobering detritus of all-out war.
Sizes: Small & Large.

12 A103 No Man's Land
Wrist Chain
Emerging from the bottomless mud and gore of the fields of Passchendaele, the ruins of humanity and war blossom.
Sizes: Small & Large.

13 A100 The Black Baron Technician's Wingstrap
Wriststrap
A rare and wondrous legacy from the famed hero of early, roaring skies; 2-tone pewter on dark brown, leather strap.
One size Adj.

14
A15
Spectrostatic
Nocturnium



14
A15▲
Spectrostatic
Nocturnium
Bangle
Early scientific instrumental band for controlling moonlight wavelength emulations; in antiqued pewter and solid brass. Shown with side view highlighting Finial Detail. Size: Medium Adj. *



Finial Detail



8
A29
Vertebrae



Finial Detail



9
A107
Thunder Torque
*



10
A118
Portative
Spectrostat



11
A93
Killing Fields



12
A103
No Mans Land



13
A100
The Black Baron
Technician's Wingstrap

Shown smaller than actual size

XVIII



- 1 **A121**
The Sophia Serpent
Bracelet
The Ouroboros, ancient Gnostic symbol of eternity, rebirth and the unity of everything, representing the sun and soul of the world.
See pages 33 & 43 for matching earrings & ring. Sizes Small & Large.
N ‡ ♦
- 2 **A112**
Tightlace Corset Bangle
Bracelet
Provocative Victorian waist cinching, applied now to the sensual wrist; with black elastic, black satin ribbon & Swarovski crystal-set heart slide fastener.
One size Adj. ‡ ♦
- 3 **A69**
La Fleur de Baudelaire
Bangle
Paris' celebrated C.19th 'gothic' poet and visionary and champion of the supernaturally creative powers of absinthe; with Swarovski crystal.
With matching choker P517 on page 22. One size Adj. * ‡ ♦
- 4 **A113**
The St Petersburg Tear
Bracelet
A gem, cut from a heart turned to ice, from the royal mistress to the Emperor of Russia.
Matching choker P764 on page 8.
One size Adj. Adjusted by pewter bead slider. ‡ ♦
- 5 **A104**
The Dogaressa's Last Love
Bracelet
From the rich regalia of office, a last token of forlorn devotion from the bereaved Lady of the Palace in Renaissance Venice.
With large Swarovski oval and suspended blue heart crystals.
See matching choker & ring pages 14 & 42. One size Adj. * ‡ ♦
- 6 **A114**
Claddagh By Night
Bangle
Love, Friendship and Loyalty vouchsafed from the underworld, in the ancient Irish tradition.
The original symbol was first produced as a ring, in the west coast village of Claddagh in the 17th century.
With matching choker, ear studs & ring, pages 20, 41 & 42. One size Adj. * ‡ ♦
- 7 **A78**
Elizabethan
Bangle
Robert Dudley's original design for the tracery molding above the North entrance to Kenilworth Castle for his great love, alas, never used; with Swarovski crystal hearts.
Also in the Elizabethan range - ring, (page 42) & stud earrings, (page 34).
One size Adj. * ‡ ♦



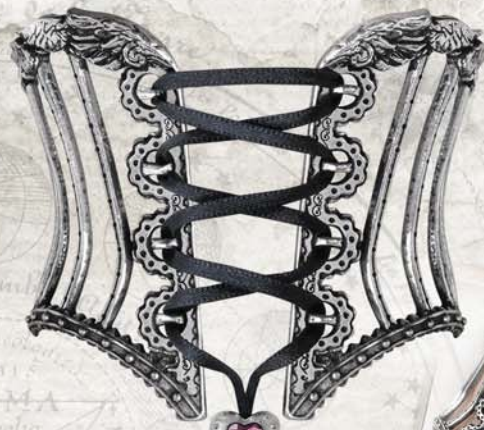
Model is wearing -
E403 The Sophia Serpent Earrings
P801 Santiago Cross Pendant
A121 The Sophia Serpent Bangle

Model : **La Esmeralda**
www.facebook.com/Alternative.Model.La.Esmeralda
Photo : **Silver Pearl Photography**

THE MOON



1
A121
The Sophia
Serpent



2
A112
Tightlace
Corset Bangle



3
A69
La Fleur de
Baudelaire
*



4
A113
The St Petersburg
Tear



5
A104
The Dogaressa's
Last Love
*



6
A114
Claddagh By Night
*



7
A78
Elizabethan
*

8
A117
Ouija Eye
Bangle
Seeing into the past, the present and the future with the unsettling guidance of the spirit board. One size Adj. *

8
A117
Ouija Eye



Bangle
Finial
Detail

The Ouija range includes pendant P766 (page 13), earstuds E396 (page 34) & ring R215 (page 42).



Sizes:

Bracelets are mostly 'One Size, adjustable', covering from Small to Large. However, where fixed sizes are indicated, these are divided into three approximate categories:

SMALL: approx. 6"-7½" (153-191mm) circumference;
MED: approx. 7"-9" (178-229mm) circumference;
LARGE: approx. 7½"-9½" (191-242mm) circumference.

When supplemented with 'Adj.', a bangle has some degree of adjustment, usually achieved by gently squeezing open or closed to fit. * **CAUTION** Repeated over-bending of bangles will cause metal to fracture.

Shown smaller than actual size



1
A101
Flocking Ravens



2
A89
Betrothal



3
A96
Skull & Briar Rose



A96
Sliding bead
ribbon fastener



4
ULFA6
Devil Heart



5
A108
Viennese Nights



A108
Sliding bead
ribbon fastener



6
A80
Passion
*



7
A106
Bacchanal Rose



A106
Sliding bead
ribbon fastener



8
A68
Curse Of Ezekiel



9
A88
Vis Viva
*

* CAUTION: Repeated over-bending of bangles will cause metal to fracture.

Armwear shown smaller than actual size. See website for accurate size details.
‡ Specified crystal colours are subject to availability and may be substituted.



Model is wearing -

P701 Viennese Nights Necklace
A108 Viennese Nights Bracelet
R211 Amour Éternel Ring

Model: **Dragonfly**
www.facebook.com/GuiDragonfly

ALCHEMY
England · 1971

· THE HIGH PRIESTESS ·

1 A101 Flocking Ravens

Bracelet

A circlet of ravens performs its calling, protects you and takes you to magical places; with Swarovski crystals.

One size Adj. ‡ ♦

2 A89 Betrothal

Hinged Bracelet

A rococo masterpiece of romantic metaphor, with the blood red enameled heart of passion; Swarovski crystal. One size Adj.

For matching ring R134, see page 42. ‡ ♦

3 A96 Skull & Briar Rose

Bracelet

A beautiful romance, turned to death and ashes. Pewter & black resin with double ribbon fitting.

One size Adj.
Adjusted by skull bead slider.

4 ULFA6 Devil Heart

Bangle

Love, is sinful, naughty and oh, so much fun!

Sizes: Small and Large. ‡ ♦

5 A108 Viennese Nights

Bracelet

The quintessential creature of the night, fashioned in opulent Renaissance scrollwork defining the decadent streets of Europe's fabulous den of iniquity.

See matching necklace on page 16 and companion earstuds, page 41. One size Adj. Adjusted by heart bead slider. ‡ ♦

6 A80 Passion

Bangle

A tangled cuff of bloody thorns, encrusted with Swarovski crystal drops; complementing the equally empathetic necklace, page 10, earwrap, page 39 & ring, page 44.

One size Adj. ✖ ‡ ♦

7 A106 Bacchanal Rose

Bracelet

A sumptuous bracelet with a romantic motif hiding, or revealing, a secret libertine passion for wine and sensual pleasures; black roses for dark love and grape vines for vinous delights. Featuring black acrylic roses, Swarovski crystals & black ribbon.

Matching necklace page 20 & earrings, page 34. One Size Adj. Adjusted by heart bead slider. ‡ ♦

8 A68 Curse Of Ezekiel

Hinged Bracelet

The Old Testament's prophet of horror, with his foretold rising of bones, coming to grisly fruition and taking a firm grip on the wearer; gripped by spring-action thumb joint.

One size Adj. Shown on wrist.

9 A88 Vis Viva

Hinged Bracelet

The living power; overwhelming energy and the force of life encircles and liberates the wearer; with Swarovski crystals.

Matching ring page 44. Shown with reverse view showing adjustable sprung fitting. One size Adj. ✖ ‡ ♦

Shown smaller than actual size



Model is wearing -
AW24 Heartfelt Strap Watch
R212 Demon Black & Angel White Ring
R120 Absinthe Fairy Spirit Crystal Ring
R211 Amour Éternel Ring

Model : Obsidian Kerttu
<https://www.facebook.com/ObsidianKerttuOfficial/>
Photo : Nevena Mitrovic
<https://www.instagram.com/nena.mit/>

**AW24 ▶
Heartfelt**

Strap Watch
Four beautiful Swarovski crystal hearts adorn this ravishingly ornate leather strap, for keeping time as well as looking gorgeous! With 24mm dia. quartz movement. One size Adj ‡

**AW22 ▶
Bed Of Blood Roses
Bracelet Watch**

Wristwatch
Tangled emotions and romance; sparkling roses flourish within the heart's blood of this intoxicating watch. Swarovski crystals glitter from beneath the bright red enamel. With 24mm dia. quartz movement. ‡



**AW16
Imperial Dragon**

Wristwatch
With all the mystique of the orient and the elegance of a Victorian connoisseur collector; this classical dragon bracelet is hinged around the watch face; adjustable. With 24mm dia. quartz movement.



**AW28
Dark Angel**

Wristwatch
Divine personal protection, watching over every minute of your earthly time. Adjustable, with 24mm dia. quartz movement.



Timepieces are shown smaller than actual size.

‡ Specified crystal colours are subject to availability and may be substituted.

TIMEPIECES

Wristwatches and bracelet, pendant and fob watches are all inset with an imported, quality quartz crystal movement. Several of the watches are enhanced with Swarovski crystal, trans-enamel or two-tone finishes. Watches come complete in either a black flock presentation pouch or an attractive black gift box, all gold-blocked with the Alchemy logo.

Visit our website www.alchemyengland.com for additional views of all Timepieces

For more information behind Alchemy's arcana of subjects, relating to products, symbols, designs and very much more, see "Further Information" on page 3.



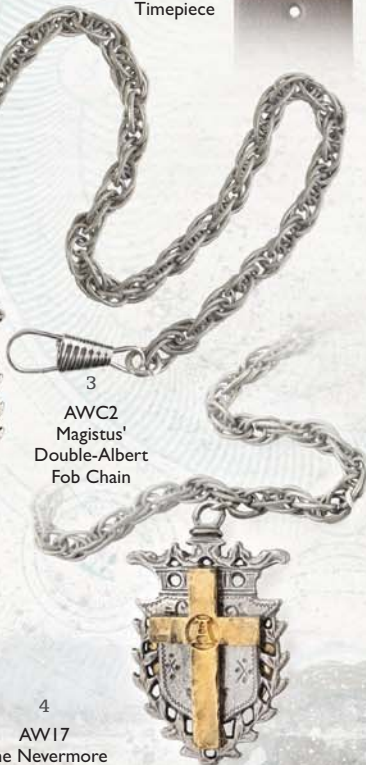
1
AW23
Telford
Chronocogulator
Timepiece



2
AW27
Thorgud
Ulvhammer



3
AWC2
Magistus'
Double-Albert
Fob Chain



4
AW17
The Nevermore
Fob Watch



ALCHEMY
England · 1971



6
AW15
EER Steam-Powered
Entropy Calibrator

- 1 **AW23
Telford
Chronocogulator
Timepiece**
Wristwatch
An antiqued pewter 'Cast-Iron' framework and gearwheels on a robust, high quality, Italian brown leather strap, mounts the essential, modern antiquarian's, sepia cog-faced time piece; with Swarovski crystals. With 35mm dia. quartz movement. †
- 2 **AW27
Thorgud Ulvhammer**
Wristwatch
Wolves' heads adorn the richly decorated Viking Thor's Hammers carved with Nordic knotwork and the head of the thunder god.
- 3 **AWC2
Magistus'
Double-Albert
Fob Chain**
Fob Chain
An elegant 24" rope chain with central T-bar and double-sided fob and an Albert swivel at either end for the well-acoutered gentleman.
- 4 **AW17
The Nevermore
Fob Watch**
Fob Watch
Edgar Allan Poe's epitome incorporating cryptic 'POE' monogram and engraved with extracts from 'The Raven'. With 35mm dia. quartz movement watchface.
- 5 **AW15
EER Steam-Powered
Entropy Calibrator**
Wristwatch
Measuring the decay of time using Carnot's second law of thermo dynamics. With 35mm dia. quartz movement and unique 'Galvanic Scale' watch face and magnetic-fastening hatch. One size adjustable.
Shown with open hatch, revealing the gauge watch face.

Buckles shown smaller than actual size

Visit our website www.alchemyengland.com for additional views of all Buckles.

BUCKLES

Alchemy buckles are all cast in solid English pewter, and are designed to be snapped onto standard 1½" (38mm) belt straps.

For more information behind Alchemy's arcana of subjects, relating to products, symbols, designs and very much more, see "Further Information" on page 3.

B100 Rabeschadel
Buckle



The great black bird is famous for its prophetic powers, being Odin's messengers and capable of foretelling death.

B75 Letter Of Marque
Buckle



An official, Royal warrant to 'privateers'; an 18th century license to kill!

B74 Wulven
Buckle



'Of the Wolf'...the children of the night. With translucent midnight-blue enamel.

B66 Gramilion
Buckle



Contesting, Draconic beasts refute ultimate possession of the black Stone of Wisdom.‡

B99 Warband
Buckle



The rune-cut battle shield and trusted sword of a Viking leader.

B85 Anima Machinato Futurus
Buckle



Latin, meaning 'mechanised life to come'; the future of the human race. Pewter cross-section of a human skull, showing brass and copper internal components, in traditional style.

B102
Jormungand
Buckle



The Norse legend of Jormungandr, the 'Midgard' or 'World Serpent' is the greatest ouroboros. **N** Matching pendant P774, page 28. See also t-shirt BT890, page 75.

L1B
Leather Belt Strap
Belt Strap



High quality, 1 1/2" (38mm) wide, black split leather belt straps with press-stud fastenings to accept any jeans-belt buckles: in a choice of three waist sizes; S (28" - 34"), M (34" - 40"), L (40" - 44").

B101
Viper's Nest
Buckle



Evolutionary 'victor ludorum' - ultimate survivors and winners. ‡ **♦**

B95
Ram's Skull
Buckle



Sacrifice for a pagan.

B8
The Alchemist
Buckle



The original Philosophus Magus portrait; set with a black rose.

B13
The Alchemist Rex
Buckle



The dominant king Alchemist skull; highly polished cranium and solid rose.

B93
Nevermore
Skull
Buckle



A study in destinal mortal reflection and a solemn reminder of life's hopeless ephemerality.

B24
Nosferatu's Hand
Buckle



The withered, yet living hand of the infamous undead, insensitively embraces the strap; in dark pewter with polished highlights and red Swarovski cabochon ring. ‡ **♦**

B69
Omega
Skull
Buckle



The enigmatic and infamous Alchemist, engraved with the wisdom of ancients.

ALCHEMY
England · 1971



B96
Thunderhammer
Buckle
The Norse god Thor's mighty weapon of utter destruction, Mjolnir.

Shown smaller than actual size

ACCESSORIES

The Elegant Way To Display Your Nocturnal Tendencies.

Visit our website www.alchemyengland.com for additional views of all Accessories.

For more information behind Alchemy's arcana of subjects, relating to products, symbols, designs and very much more, see "Further Information" on page 3.



▲ S1 Skull Buttons

Pewter Buttons
Pewter replacement shirt buttons in packs of 6. Sewn-on with black thread through a pair of subtly placed thread-holes.



▲ CL14 Uncle Albert's Cuff Link

Cuff Links
The perfect, miniature 13-hour Lunar-time Victorian era fob watch. Coordinating items, pages 40 & 42.

◀ ABR5 Norsebraided Beard & Hair Beads

Beard / Hair beads (Set of 3)
The complete Viking warrior's amuletic tool kit, to incite a berserker's invincibility. Set of 3 includes Thor's Hammer, Raven's Skull and Viking Warrior's Helmet. **N**

◀ ABR1 Funereal Beard & Hair Beads

Beard / Hair beads (Set of 3)
Essential regalia for the well appointed mute and pagan mourner. Set of 3 includes Janus Skull, Coffin & Alchemist Skull.



EP2 ▼ D'Duke's Polarising Monocle

Monocle
Believed to be the first optical device to successfully filter polarised light waves, (however, the striated glass element has, sadly, been lost); on approx. 20" long, fine black curb chain with T-bar.



▲ GA2 Keys To Progress Shirt Sleeve Band

Sleeve Band
A masterly and stylish symbol of the times and of the infinite possibilities for pioneers of the new age; 2-tone pewter with elasticated sleeve band.

- 1 DP3 **Bat Dress Pins**
Dress Pins (Pack of 3)
An understated reminder of the silent, prevailing powers of the night.
- 2 DP1 **Memling Skull**
Dress Pins (Pack of 3)
Understated, Hans Memling style skull, as if taken from his Vanitas Triptych.
- 3 HG1B / HG1S **Skully Hair Grip**
Black/Silver
Hair Grip (Single)
The boneheaded, hollow-eyed simpleton stares into the face of convention and confounds any curious onlooker. Available in black or silver; supplied singly.
- 4 AKP4 **Not Dead Pin**
Kilt Pin
1976 - the beginning of the Alternative Revolution for those that dared be different!
- 5 HH11 **Cat Sith**
Hair Slide
Superstition and folklore pervade the mysterious black cat, known in Celtic mythology as the fairy Cat Sith.
Matching ear wrap page 36 & pendant, page 6. **N**
- 6 AKP1 **Pin-Head**
Kilt Pin
A most freakish jewel, and a strong and distinctly different way to fasten your stuff, from a kilt or a coat to a kit bag or cloak.
- 7 HH10 **Black Raven Hair Slide**
Hair Slide
The Raven - the modern vampire and 20th century symbol of the undead; in blackened pewter.
Companion pendant, page 25 & earrings, page 34.
- 8 HS4 **Roseus Pentagram**
Hair Stick
For Alchemical perfection.
- 9 AKP3 **Artificer's Utility Pin**
Kilt Pin
The essential instruments possessed by a sky-ship officer.
- 10 HH9 **Get A Grip**
Hair Slide
A sinister looking, yet innately harmless main de l'os. On a sprung steel hair clip.
- 11 HH1 **Darkling Bat Slide**
Hair Slide
The classic vampiric bat swoops spreadeagled towards it's prey.
- 12 AKP2 **Away From The Roost**
Kilt Pin
A vanguard of silently flitting pipistrelli cavort in the sinister twilight. †
- 13 HC3 **Claddagh Hair Comb**
Hair Comb
A gothic variant of the traditional, C17th, Galway symbol of eternal love, friendship and loyalty by virtue of its heart, hand and crown, but with bones for 'beyond the grave'.



1
DP3
Bat Dress Pins



2
DPI
Memling Skull
Dress Pins



3
HG1B
Skully Hair Grip
Black



3
HG1S
Skully Hair Grip
Silver



4
AKP4
Not Dead
Kilt Pin



5
HH11
Cat Sith
Hair Slide



6
AKP1
Pin Head
Kilt Pin



7
HH10
Black Raven
Hair Slide



8
HS4
Roseus
Pentagram
Hair Stick



9
AKP3
Artificer's
Utility
Kilt Pin



10
HH9
Get A Grip
Hair Slide



11
HH1
Darkling Bat
Hair Slide



12
AKP2
Away From
The Roost
Kilt Pin



13
HC3
Claddagh
Hair Comb

Shown smaller than actual size

1
AQU4
The Alchemist's
Black Feather
Quill Pen



1 **AQU4**
**The Alchemist's
Black Feather Quill Pen**
Feather Pen
An ancient medieval writing tool ideally suited to the arcane practitioner of the mystic arts. Fashioned from the moulted flight feathers of a goose, swan or other large avian species. With ball point pen insert. **N**

2
BE4
Alchemist
Pen Top.
(Shown capped
& uncapped)
Sold singly.



2 **BE4**
Alchemist Pen Top
Pen Top
Classic Alchemist's skull, cast in English Pewter; securely fitted to the top of the latest, black Bic ball pen (non-toxic); pen included.

3 **AD1**
**Black Rose Fragrance
Diffuser**
Fragrance Diffuser
80ml fine French fragrance diffuser, with black reeds.

4 **AAC47**
Mortalitas Pill Box
Pill Box
A miniature bedside skull to keep safe and remind you of your daily ration of essential medication; with brass hinge and catch.

5 **ROSE1**
Black Rose
Rose
Convincing, artificial symbol of perfection and tragic love.



Shades of
ALCHEMY
Specially Selected
Gifts



3
AD1
Black Rose
Fragrance
Diffuser



4
AAC47
Mortalitas
Pill Box



1
ACWT2
La Fée Verte
Shot Glass
*



5
ROSE1
Black Rose



GLASSWARE

Elegant and dramatic, cast English Pewter sculpted goblets and glasses, for wine and spirits, some with Swarovski crystal adornments and a range of coloured and clear glass bowls.

Visit our website www.alchemyengland.com for additional views of all Glassware.

For more information behind Alchemy's arcana of subjects, relating to products, symbols, designs and very much more, see "Further Information" on Page 3.

1 ACWT2
**La Fée Verte
 Shot Glass †**

Shot Glass
 'The Green Fairy' Art Nouveau
 style 'forest glass' shot glass.
 Approx. 65mm high. ✱

2 CWT43
Dracula's Cup †

Wine Glass
 For the dangerously intimate
 encounter; blood red Swarovski
 crystals drip from the thorns of
 peril and passion. † ✦

3 ACWT9
**The Wormwood Tree
 Absinthe Shot Glass †**

Shot Glass
 The truly decadent way to
 enjoy, neat, the gratifyingly
 creative delights of the green
 fairy. Approx. 123mm high.

4 ACWT4
**La Fée Verte
 Absinthe Spoon**

Absinthe Spoon
 Traditional sugar cube strainer
 for watering down absinthe, in the
 form of an Art Nouveau fairy.

5 ACWT3
**La Fée Verte
 Tumbler †**

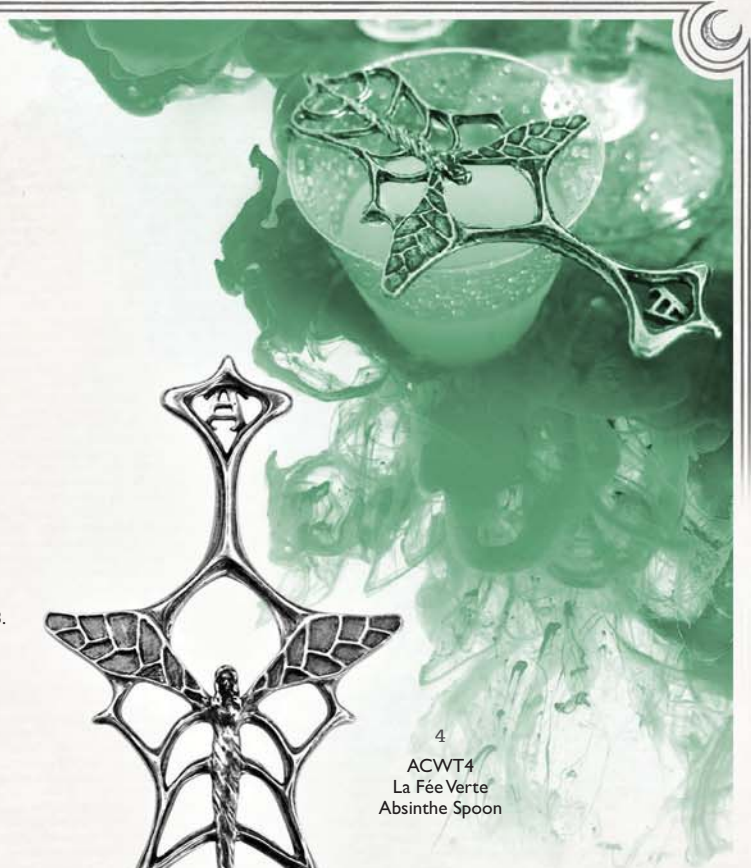
Glass Tumbler
 Traditional tall absinthe tumbler,
 in 'forest glass' with pewter Art
 Nouveau fairy base, for taking
 absinthe with water and sugar.
 Approx. 180mm high. Absinthe
 spoon shown, not included. ✱

6 CWT54
**Wings Of Love
 Prosecco Glass †**

Champagne Glass
 The most passionate way to toast
 your love, with multi-faceted
 Swarovski crystal hearts, flying
 high to meet their destiny. † ✦

✱ This glass item is traditionally
 hand-blown. Minor flaws and
 imperfections are a feature which
 naturally enhance the beauty
 of the glass.

† All Alchemy glassware is subject to
 our repair service. See note on Page 3.



4
 ACWT4
 La Fée Verte
 Absinthe Spoon



2
 CWT43
 Dracula's Cup



3
 ACWT9
 The Wormwood Tree
 Absinthe Shot Glass



5
 ACWT3
 La Fée Verte Tumbler
 ✱



6
 CWT54
 Wings Of Love
 Prosecco
 Glass

DRINKING VESSELS

- Traditional, glass beer glasses for ale and lager, but with the unique addition of Alchemy's cast pewter badges and labels.
- Pewter tankards and goblets hand-made the traditional way by our partners in Sheffield, using a heavier 0.26 gauge pewter, and with castings made at our workshops in Leicester.
- Robust, matt black, heatproof 400ml mugs with crisp graphics engraved deep into both sides to reveal the white porcelain beneath. Dishwasher and microwave safe.



CWT59 ▶
Thunderhammer Tankard †

Beer Glass

Mjolnir, the Norse god Thor's mighty weapon of utter destruction. A one pint capacity (600ml) glass mug with handle, and a large, antiqued pewter 3D modelled Viking Thor's hammer decorated with carved, authentically traditional knotwork. **N**

† All Alchemy glassware is subject to our repair service. See note on Page 3.

Visit our website www.alchemyengland.com for additional views of all Drinking Vessels.

For more information behind Alchemy's arcana of subjects, relating to products, symbols, designs and very much more, see "Further Information" on Page 3.



◀ CWT58
Villa Diodati Continental Beer Glass

Beer Glass

Drink to the memory of Byron, Polidori and Shelley, and the birth of their Frankenstein and Dracula. Glass approx. 180mm high. Approx. half pint capacity (300ml).



▶ AAT10
Silver Dragon

Pewter Tankard

This breathtaking sculpted dragon in full flight, forms the handle of this stylish 1 pint capacity (600ml) tankard.



◀ AAT25
Viking Horn

Pewter Tankard

Robust 1 pint (600ml) tankard with simulated horn 'fertility' handle in traditional Viking style and carved pewter mounts.



**AAG51
Ruah Vered Goblet**

Stainless Steel Goblet
The spirit and the 'Breath of Life' combined with the sensual rose of love, toasting health, harmony and passion.

Also shown with E402 NEW earrings & P715 pendant (t-shirt also available).



· RUAH VERED ·



**CWT48
XXX Black
Rose Ale Glass †**

Ale Glass
An imperial pint, straight glass, badged in glorious dignity with a cast pewter skull 'n' bones label, befitting all serious ale-aficionados.
Approx. 150mm high.

**ALCHEMY
COFFEE MUGS**
Double sided ceramic mugs.

- 1 ALMUG2
Alchemist Mug**
Ceramic Mug
- 2 ALMUG4
Death Before
Decaf Mug**
Ceramic Mug
- 3 ALMUG5
Favourite
Colours Mug**
Ceramic Mug
- 4 ALMUG3
Black Coffee,
Black Rose Mug**
Ceramic Mug

COFFEE MUGS



1
ALMUG2
Alchemist Mug



2
ALMUG4
Death Before
Decaf Mug



3
ALMUG5
Favourite
Colours Mug



4
ALMUG3
Black Coffee,
Black Rose Mug

**ALCHEMY
COFFEE MUGS**

- Etched design on both sides.
- Safe for normal dishwasher use.
- Microwave safe.

Shown smaller than actual size



1
V65
Black Rose
Wreath
Wall Hanger or
Candle Stand



2
V47
Morgan
Theomachia
Wall Mirror

The
VaultTM
by **Alchemy**



5
V26
Time
Chronambulator
Desk Clock



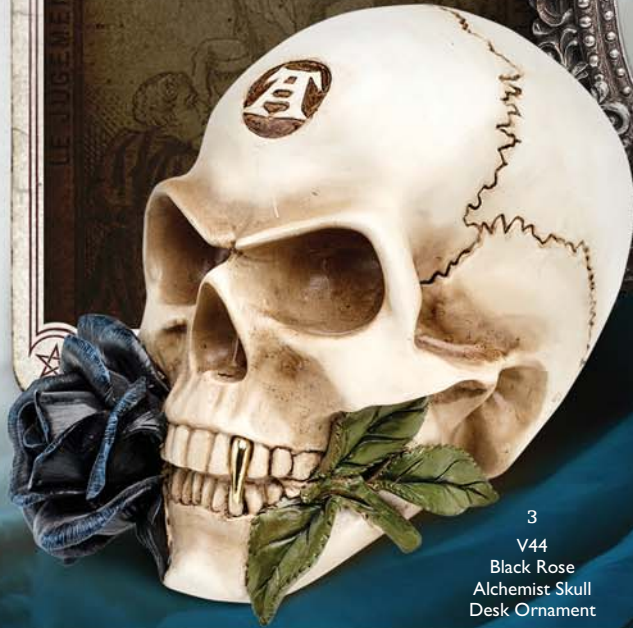
6
V15
The Stormgrave
Chronometer
Desk Clock



7
V45
Hora
Mortis
Desk Clock

The Vault™ by Alchemy

Original and official:
Quality resin giftware, designed
by Alchemy Studios, England.



3
V44
Black Rose
Alchemist Skull
Desk Ornament



4
V54
Masque Of The
Black Rose
Wall or
Table Mirror

Visit our website www.alchemyengland.com
for additional views of all Vault items

For more information behind Alchemy's arcana
of subjects, relating to products, symbols, designs
and very much more, see "Further Information"
on page 3.



8
V50
Anguistralobe
Desk Clock



9
V57
My Soul From
The Shadow
Wall or Table
Picture Frame

- 1 **V65**
Black Rose Wreath
Wall Hanger or Candle Stand
A devotional wreath for an
inexplicably dark and mysterious
love. **N**
Approx. diameter 18cm.
- 2 **V47**
Morgan Theomachia
Wall Mirror
As the ancient, feuding gods of Celt
versus Saxon battle in the form of
dragons, Arthur's half-sister, Morgan,
waits to take advantage. **N**
Approx. height 22cm.
- 3 **V44**
**Black Rose
Alchemist Skull**
Desk Ornament
The lifesize replica of the actual skull
of the Alchemist, with its gold canine
tooth. Complete with his symbolic
Black Rose of the Opus Magnus. **N**
Approx. height 13cm.
- 4 **V54**
**Masque Of The
Black Rose**
Wall or Table Mirror
All that remains of a legendary
masquerade ball from the Eve of
St. Levantius. A noble, boyar vampire
tryst, where the dark patricians
revelled in a night of pure sensuality.
N
Approx. height 24cm.
- 5 **V26**
Time Chronambulator
Desk Clock
The beating heart of the pan-
dimensional adventurer's clockwork
time machine. Requires 1 x 1.5v AA
battery (not included). Approx. height
12cm.
- 6 **V15**
**The Stormgrave
Chronometer**
Desk Clock
Professor Stormgrave's patent
celestial chronometer, mapping the
forces that govern the passing of
eternity.
Requires 1 x 1.5v AA battery
(not included). Approx. height 20cm.
- 7 **V45**
Hora Mortis
Desk Clock
A hand from the grave, subtly
reminding you of the time you have
left!
With 35mm dia. quartz movement
watchface. **N**
Approx. height 13cm.
- 8 **V50**
Anguistralobe
Desk Clock
Daedalian C18th instrument which
measured the direct path of destiny
between specified heavenly bodies. **N**
Requires 1 x 1.5v AA battery
(not included). Approx. height 13cm.
- 9 **V57**
**My Soul From The
Shadow**
Wall or Table Picture Frame
A spirit raven takes flight to guide
a forlorn lover's desperate search
for hope after the tragic loss of his
beloved. Holds a 6" X 4" picture. **N**
Approx. height 25cm.

ALCHEMY
England · 1971

All Vault items are made of cast
and hand finished resin and are
featured smaller than actual size.

Shown smaller than actual size



1
V63
Pentagramatron
Trinket Dish

2
V53
Scrimshaw
Ram Skull
Desk Ornament
(Approx. length 18cm)

3
V46
Dragonlore
Desk Clock



V55
Masque Of The
Black Rose
Wall or Table
Picture Frame



8
V56
My Soul From
The Shadow
Wall or
Table Mirror



4
V61
Vampyr Bat
Trinket Dish



5
V62
Anguistralobe
Trinket Dish



6
V59
Pentagram
Trinket Box

The
Vault[™]
by **Alchemy**



9
V60
Half Skull
Trinket Dish

1 **V63
Pentagramatron**

Trinket Dish

The most powerful of supernatural magical talismans, multiplied by it's own sacred number. **N**
Approx. diameter 9cm.

2 **V53
Scrimshaw Ram Skull**

Desk Ornament

Worshipful head of the cult of Ammon, carved with scrimshaw foliate forms that symbolise the eternal cycle of birth and regrowth. **N**
Approx. length 18cm.

3 **V46
Dragonlore Clock**

Desk Clock

The spectacular time dragon, sleeps his timeless guard upon an engraved stone that reads 'time, greatest of treasures' **N**
Approx. width 13cm.

4 **V61
Vampyr Bat**

Trinket Dish

The torpid revenant awakens to the moon dawn, to quench it's thirst for mortal blood. **N**
Approx. width 8cm.

5 **V62
Anguistralobe**

Trinket Dish

Commemorative dish celebrating the 18th instrument which measured the direct path of destiny between specified heavenly bodies. **N**
Approx. diameter 9cm.

6 **V59
Pentagram Box**

Trinket Box

The Stella Rosarium protects your precious treasures with sacred geometry from Chalisbury Cathedral's Rose Chapel. **N**
Approx. width 16cm.

7 **V55
Masque Of The Black Rose**

Wall or Table Picture Frame

All that remains of a legendary masquerade ball from the Eve of St. Levantius. A noble, boyar vampire tryst, where the dark patricians revelled in a night of pure sensuality. Holds a 6" X 4" picture. **N**
Approx. height 24cm.

8 **V56
My Soul From The Shadow**

Wall or Table Mirror

A spirit raven takes flight to guide a forlorn lover's desperate search for hope after the tragic loss of his beloved. **N**
Approx. height 25cm.

9 **V60
Half Skull**

Trinket Dish

Cleaved asunder, the untenanted skull of a once mighty overlord who's sequestered secrets hide within it's fissures. **N**
Approx. width 8.5cm.



All Vault items are made of cast and hand finished resin and are featured smaller than actual size.



1
V52
Ravenger
Wall Mount
(Approx. width 27cm)



2
V29
Thors Hammer
Wall Mount
(Approx. height 21cm.)



4
V35
Count Magistus
Money Box
(Approx. height 14.5cm.)

ALCHEMY
England · 1971



5
V28
Raven's Ward
T - Light Holder
(Approx. height 11cm.)



8
V51
Rosa Vitrolius
Table Ornament
(Approx. width across base 13.5cm.)



9
V36
Black Rose
T - Light Holder
(Approx. diameter 8.5cm.)

Shown smaller than actual size

The Vault
by **Alchemy**

3
V32
Tempore Mortis
Skull Wall Clock
(Approx. height 21 cm.)



6
V37
Geistalon
Unicorn Skull
Desk Ornament
(Approx. height with
horn removed 15cm.)



V31
Dragon Wand
(Approx. height 24cm.)



10
V33
Rose Of Otrolanus
T - Light Holder
(Approx. diameter 12.5cm.)



- 1 **V52 Ravenger**
Wall Mount
The dark and mysterious phantom; afterlife totem of the Elysian Corvid. **N**
Approx. width 27cm.
- 2 **V29 Thors Hammer Wall Mount**
Wall Mount
Thor's mighty hammer Mjölmir commanding the primal energy of the storm.
Approx. height 21cm.
- 3 **V32 Tempore Mortis Skull Wall Clock**
Wall Clock
The ever watchful chronicler of your remaining hours. Requires 1 x 1.5v AA battery (not included).
Approx. height 21cm.
- 4 **V35 Count Magistus Money Box**
Money Box
Place your trust in a gentleman who's reputation is beyond reproach (and beyond the grave).
Approx. height 14.5cm.
- 5 **V28 Raven's Ward T - Light Holder**
T-light Holder
The harbinger of the old gods, illuminating the dark night of the soul. (Candle not included)
Approx. height 11cm.
- 6 **V37 Geistalon Unicorn Skull**
Desk Ornament
The thundering phantom of a legendary armored stallion. With magnetic, removable horn.
Approx. height (with horn removed) 15cm.
- 7 **V31 Dragon Wand**
Wand
Carved from the fire bone of Jörmungandr, last of the Draco Mundi.
Shown with magical pentagram seal on reverse.
Approx. height 24cm.
- 8 **V51 Rosa Vitrolius Table Ornament**
Table Ornament
Born from the alchemical union of Rubus thorn and Basilisk. A chimeric spirit whose paradoxical nature has intrigued philosophers since the days of Hermes Trismegistus. **N**
Approx. width across base 13.5cm.
- 9 **V36 Black Rose T - Light Holder**
T-light Holder
The alchemical mystery personified by a point of light in the bloom of eternal night. (Candle not included).
Approx. diameter 8.5cm
- 10 **V33 Rose Of Otrolanus T - Light Holder**
T-light Holder
The ethereal light of the fifth element ensnared by the midnight rose. (Candle not included).
Approx. diameter 12.5cm.

All Vault items are made of cast and hand finished resin and are featured smaller than actual size.

Shown smaller than actual size



The Vault™ by Alchemy



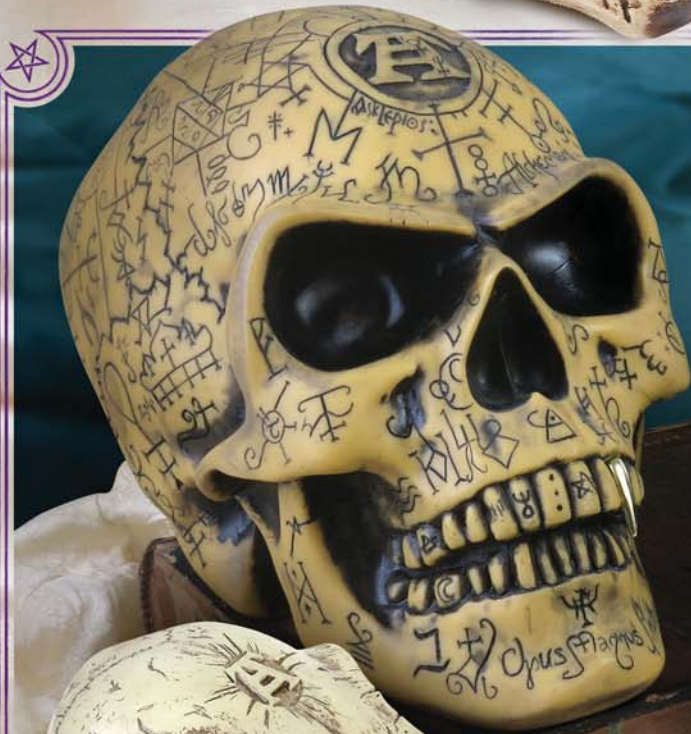
1
V42
The Inner Light
Illuminated
Desk Ornament



3
V43
Crimson Demon Skull
Desk Ornament



2
V49
Dragon Skull
Illuminated
Desk Ornament



8
V1
Omega Skull
Desk Ornament



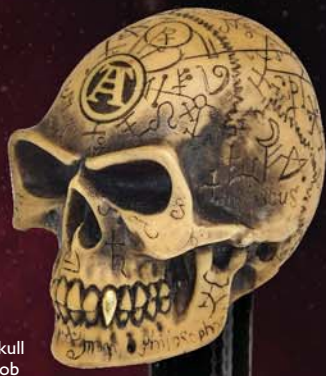
10
V41
Metalised
Alchemist Skull
Desk Ornament



9
V16
Corvus Alchemica
Desk Ornament



4
V17
Poe's Raven
Desk Ornament



5
V48
Omega Skull
Gear Knob



6
V40
Alchemist
Gear Knob



7
V3
Metalised
Alchemist
Gear Knob



11
V4
Erasmus Darwin's
Steam-Cerebrum
Desk Ornament with
Stash Drawer

12
V2
Lapillus Worry
Skull
Pocket Bead

- 1 V42
The Inner Light Alchemist Skull
Illuminated L.E.D. Desk Ornament
Bask in the incandescent wisdom of the immortal philosopher. Battery included. Approx. height 9cm.
- 2 V49
Dragon Skull
Illuminated L.E.D. Desk Ornament
The petrified cranium of an infernally mortifying dragon imbued with the eternal cleansing fire of creation. Battery included. Approx. length 15cm. **N**
- 3 V43
Crimson Demon Skull
Desk Ornament
Vermiculus, Archduke of Chaos and guide to the lost souls who fall through the shifting terror-scapes that make up the fractured topography of Hell. Approx. height 15cm. **N**
- 4 V17
Poe's Raven
Desk Ornament
Inspiring Edgar Allan Poe, Master of the Macabre to give poetic voice to the Raven, "NEVERMORE". Approx. height 18.5cm.
- 5 V48
Omega Skull Gear Knob
Gear Knob
The Alchemist inscribed with all the wisdom of 7000 years. With the traditional golden tooth. Approx. height 4.5cm. **N**
- 6 V40
Alchemist Gear Knob
Gear Knob
Bone resin version of the classic Alchemist Gear Knob. Approx. height 4.5cm.
- 7 V3
Metalised Alchemist Gear Knob
Gear Knob
The original Philosophus Magus, guiding the traveller to the path of enlightenment. (Bored and fitted with a rubber grommet for self-tap screwing onto gear sticks). Approx. height 4.5cm.
- 8 V1
Omega Skull
Desk Ornament
Life-sized Alchemist's skull, in aged bone-resin, carved over its entire surface with all the symbolic wisdom of 7000 years of history. With the traditional golden tooth. Approx. height, 13.5cm
- 9 V16
Corvus Alchemica
Desk Ornament
A larger than life mythic raven skull, personifying the ancient god of prophecy, ill-omen and lost souls. Approx. length 21.5cm.
- 10 V41
Metalised Alchemist Skull
Desk Ornament
A life-sized Alchemist's skull, immortalised in the mercurial lustre of the secret arts. With the traditional golden tooth. Approx. height, 13.5cm.
- 11 V4
Erasmus Darwin's Steam-Cerebrum
Desk Ornament with Stash Drawer
The last and greatest creation to be attributed to the Bedlam Institute of Galvanic Studies. Approx. height 16cm.
- 12 V2
Lapillus Worry Skull
Pocket Bead
A diminutive yet uncanny skull to comfort and guide a troubled soul. Approx. height 1.5cm.

All Vault items are made of cast and hand finished resin and are featured smaller than actual size.

Shown smaller than actual size

1 **V18**
Oracle Of Narcissus
Table Mirror with Trinket Drawer
Stare long enough into the argent pool and one inescapable destiny shall befall all, be they God or mortal. Inscribed with the legend "Memento Vivere, Memento Mori". Whilst you are certain to die, remember that you must first live. Approx. height 27cm.

2 **V64**
Sacred Cat
Hand Mirror
Gaze into the glass long enough and you shall divine the feline prophesies of Ailouros, hearth spirit of the temple of Amun. Approx. height 22.5cm. **N**

3 **V58**
Baroque Rose
Hand Mirror
Grown from a thorn of the one true black rose - The obsidian bloom that is the Opus Magnus of the Alchemist. Approx. height 21.5cm. **N**

4 **V38**
Gothic Heart
Compact Mirror
An exquisitely carved window reflecting the beauty and barbarity of a lost golden age of mediaeval chivalry. Approx. height 8cm.

5 **V39**
Ghost Of Narcissus
Compact Mirror
Glimpse the culmination of your mortal vanity, as you muse upon the futility of worldly endeavours with this secret memento mori. Approx. height 8cm.

6 **V27**
Nevermore
Compact Mirror
Gaze upon your mortal reflection under the scrutiny of Poe's mocking Raven. Approx. width 9cm.

7 **V34**
Gothic Ankh
Hand Mirror
Sacred relic of Aset, beloved goddess of all vampires. Approx. height 21.5cm.

8 **V9**
Fate Of Narcissus
Hand Mirror
Stare long enough into the argent pool and one inescapable destiny shall befall all, be they God or mortal. Approx. height 18cm.

9 **V20**
Lady Talbot's Retrospector Hand Mirror
Hand Mirror
Constance Talbot's revolutionary spectronic affinity glass allows the subject to glimpse a semblance of their past or future countenance through her patent 'Steam lens'. (Featuring a small magnifying lens). Approx. height 23cm.

10 **V10**
Black Angel
Hand Mirror
One of the most alluring of the high order of angels, invoked by the Sigillum Aemeth, Dr. John Dee's scrying stone. Approx. height 23cm.



The Vault™
by Alchemy

1
V18
Oracle Of Narcissus
Table Mirror with Trinket Drawer



2
V64
Sacred Cat
Hand Mirror

3
V58
Baroque Rose
Hand Mirror



All Vault items are made of cast and hand finished resin and are featured smaller than actual size.

MIRRORS



4
V38
Gothic Heart
Compact Mirror



5
V39
Ghost Of Narcissus
Compact Mirror



6
V27
Nevermore
Compact Mirror



7
V34
Gothic Ankh
Hand Mirror



8
V9
Fate Of Narcissus
Hand Mirror



9
V20
Lady Talbot's
Retrospector
Hand Mirror



10
V10
Black Angel
Hand Mirror

T-SHIRTS

Original Alchemy artwork
printed onto high quality,
black 100% cotton T-shirts.

Visit our website www.alchemyengland.com
for additional views of all T-shirts.

For more information behind Alchemy's arcana
of subjects, relating to products, symbols, designs
and very much more, see "Further Information"
on Page 3.

1 **BT889**
Alchemist Askance

T-shirt

Summoned from the shadows of eternity,
the renowned pioneering philosopher known
only as The Alchemist, attains the elusive
Opus Magnus. The symbolically pure
Black Rose of Perfection. **N**

2 **BT890**
Jormungand

T-shirt

Jörmungandr, the name of the greatest
ouroboros, the Norse legend of the 'Midgard'
or World Serpent. **N**

3 **BT871**
St. Levantius Remains

T-shirt

The shrouded countenance of Brother
Mortimus. Last of the Holy Order of St.
Levantius and deathless custodian of the
Arcanum Noctis.

4 **BT846**
Mjólnir

T-shirt

Thor the storm god's mighty weapon of
elemental awe. Mjólnir in Old Norse means
"That which marks and pulverises to dust".
An amulet of ancient Nordic magic wrought
by the dwarven brothers Sindri and Brokkr,
endowing the wearer with strength and
fortitude. The fear of Thor's hammer was all
that held back the frost giants, fearsome foes of
the gods of Asgard before the final apocalyptic
battle of Ragnarok.

5 **BT868**
Scar Bones

T-shirt

The legendary ink-man from Louisiana
takes his final bow: payback, with the mother
of all irons made from trophies and relics taken
from his former 'customers'.

6 **BT869**
Ruah Vered

T-shirt

The spirit and the 'Breath of Life', entwined
with the romantic and sensual rose of faithful
love.
See also Ruah Vered pendant, earrings & goblet
(pages 19, 33 & 63).

7 **BT847**
Corvinculus

T-shirt

Legendary messenger of the gods and arbiter
of mortal fate, be it good or ill. A harbinger of
doom and destruction on the battlefields of
yore, and an ambassador between this world
and the next. Speak not your words of betrayal
and heresy in his earshot, lest the gods strike
you down.

8 **BT810**
Poe's Raven

T-shirt

Edgar Allan Poe's seminal creation alights upon
the skull of his poetic father. The master of the
macabre whose short life echoes the cry of the
raven 'Nevermore'.

ALCHEMY
England • 1971

Model is wearing -
BT889 Alchemist Askance T-Shirt
B88 No Evil Buckle
R171 Thor's Runehammer Ring
A98 Thunderhammer Wriststrap

Model : **Dark Wolf**
<https://www.facebook.com/Dark.Wolf.Model/>
Photo : **Anthony Mes - Photographie**
<https://www.facebook.com/anthonymesphotographie/>

Available in sizes:
M (38"-40" chest size),
L (42"-44" chest size)&
XL (46"-48" chest size).

Branded with
AlchemyEngland logo.



1
BT889
Alchemist Askance



2
BT890
Jormungand



3
BT871
St. Levantius Remains



4
BT846
Mjolnir



5
BT868
Scar Bones



6
BT869
Ruah Vered



7
BT847
Corvinculus



8
BT810
Poe's Raven

BAGS, PURSES & WALLETS




PURSE-BAGS

(synthetic)

Alchemy's new, affordable collection of vegan, black PU purses each have an embossed Alchemy design on both the front and reverse, a zippered opening at the top and a detachable chain with synthetic leather shoulder strap. **N**

Approx. dimensions: H: 18cm (7.09") W: 18cm (7.09") D: 6cm

Visit our website www.alchemyengland.com for additional views of all Bags.

 For more information behind Alchemy's arcana of subjects, relating to products, symbols, designs and very much more, see "Further Information" on page 3.

CRAFTED GENUINE ✦ ✦ ✦ LEATHER ACCESSORIES

(overleaf on page 78)

Alchemy's utterly unique leather accessories are individually hand-made by skilled craftsmen in a specialist's factory in southern Poland. This collection is made exclusively from choice, best quality natural leathers and fine fabrics. Leather is a natural product with unique characteristics and natural variations and marks. These are features, not faults, which reveal the individuality of each item. One of the distinctive and pleasing features of leather is that, with age, each item assumes a genuine character of its own.



Model is wearing :
R216 Stealth Ring
A108 Viennese Nights
Bracelet
GB3 Night Bat Purse-Bag

Model : **Dragonfly**
www.facebook.com/GuiDragonfly

Shown smaller than actual size



GB1 ▲
Heart Skull
Purse-Bag



GB2 ▲
Pentagram
Purse-Bag



▲
GB4
Gothic Cross
Purse-Bag



GB3 ▲
Night Bat
Purse-Bag



GB5 ▲
Raven Moon
Purse-Bag



▲
GB7
**Skull &
Crossbones**
Purse-Bag



GB6 ▲
Dragon
Purse-Bag



GB8 ▲
Black Cat
Purse-Bag

Bags are shown smaller than actual size.
BAGS NOT TO SCALE.

Shown smaller than actual size

CRAFTED GENUINE ✦✦ LEATHER ACCESSORIES



To ensure you have an authentic Alchemy leather product, the handbags, purses & wallets featured here are branded with unique 'Alchemy Rose' logos. Be sure to check your product for authenticity.



**LG46
Bat Purse**

Leather Purse
Sculpted leather bat-shaped purse, with zip-top & curb chain strap.

Approx. dimensions:
19cm (7") wide X
10cm (4") high X
4cm (1") deep.

**LG6
Coffin Purse**

Leather Purse
Soft black leather purse or cigarette case, with zipped side opening, on 15" (44.5cm) curb chain.

Approx. dimensions:
16.5cm (6") high X
10.5cm (4") wide X
5cm (2") deep.



**LG15
Coffin Wallet**

Leather Wallet
In high quality leather, with large bank-note section, several card pockets and eyelet hole for chain attachment.

Approx. dimensions:
17cm (6") high X
11cm (4") wide



Bags are shown smaller than actual size.
BAGS NOT TO SCALE; (check dimensions)

**LG60
Empire 'Aviator' Pouch**

Leather & Canvas Bag
Gentleman officer's pouch, (with detachable shoulder strap option), of 'vintage' cotton canvas and leather, with mobile phone and pen pockets.

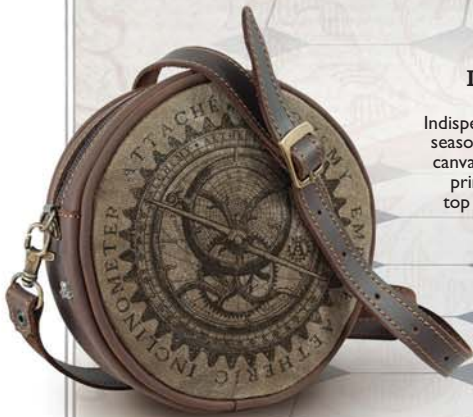
Approx. dimensions:
12cm (4¾") wide X
20cm (8") high X
6.5cm (2½") deep.



**LG71
Aetheric
Inclinometer Attaché**

Leather & Canvas Bag
Indispensable compass pouch for the seasoned cloud pilot. Vintage cotton canvas and leather purse, with front print 'Inclinometer' design, zipped top opening, adjustable, removable leather shoulder strap & pewter Alchemist stud.

Approx. dimensions:
15cm (5¾") dia. X
4.5cm (1¾") deep.



**LG64
Wing-Commander's
Attaché Pouch**

Leather & Canvas Bag
Designed for the reckless, duty-bound subaltern with adventure written in their genes.

Essential communications are always assured with this vintaged canvas and leather pouch, with its front iPhone pocket, whether worn in belt-pouch, shoulder bag or backpack mode.

Approx. dimensions:
20.5cm (8") wide X
146.5cm (6½") high X
6cm (2½") deep.



**LG58
Eye Of Providence Handbag**

Leather Bag
In the protection of the all-seeing eye of the gods! An eerily realistic enameled metal and hand crafted leather eye, unflinchingly peers from the front flap of this stylish shoulder bag. Hand made of vintage-style black leather with adjustable strap.

Approx. dimensions:
19.5cm (7¾") wide X
17.5cm (6¾") high X
7cm (2¾") deep.



HANGING SIGNS

From the philosophical musings of the Alchemist himself and the artists of Alchemy Studios, come a collection of profound and essential dark pearls of wisdom; 90 x 65 mm mini, enamelled metal signs, pre-strung to hang anywhere.



ALHS14



ALHS15



ALHS20



ALHS19



ALHS18



ALHS17



ALHS16



ALHS13



ALHS12



ALHS11



ALHS10



ALHS9



ALHS8



ALHS6



ALHS5



ALHS4



ALHS3



ALHS2



ALHS1



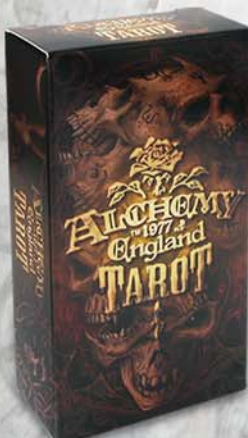
CARD7 Alchemy Tarot
Tarot Card Set
Divine your spiritual path through the esoteric wisdom of the Tarot. A fully illuminated oracle of classic Alchemy imagery. Fournier Tarot pack with 78 uniquely different images.



CARD8 Bicycle Poker Deck
Playing Cards
Stunning set of Alchemy Studios playing cards, designed & made by Bicycle. A truly alternative collection of 55 different images from all categories of the Alchemy Art Library.



ULCARD UL13 Anarchy
Playing Cards
Uniquely designed playing card set, featuring a different UL13 image on each card.



ALCHEMY licensing™

POPSODA

Popsoda, UK.
www.popsoda.co.uk
Alternative clothing.

OFFICIALLY LICENSED ALCHEMY PRODUCTS

Alchemy Studios' unique and growing collection of distinctive artwork has, for many years now, been inspirational and highly influential within the alternative genres. Over time, its images have been used on T-shirts, posters and calendars, etc. But now, Alchemy's international appeal has led to a great variety of different licensed products being developed with over 40 official Licensees worldwide, and these are available through various distributors. Unfortunately, Alchemy are unable to sell most of these items themselves, however you can contact all our Licensees directly for details through the Alchemy licensing website:
www.alchemylicensing.com



Steel Ground
Shoes, Portugal.
www.steelground-shoes.com
Alternative footwear.



A UNIQUE
COLLABORATION
IN FOOTWEAR



D'Addario
PLANETWAVES™

Planet Waves, USA.
www.planetwaves.com
Guitar straps.



Signature
AT HOME

Signature At Home, UK.
www.signatureathome.com
Bedding, pillows, tablet bags & more.



LLEWELLYN
New Worlds of Mind and Spirit

Llewellyn Worldwide, USA.
www.llewellyn.com
Books, calendars & tarot publishers.



THE WORLD OF 3D

The World Of 3D, UK.
www.worldof3d.co.uk
3D bags, purses, postcards,
prints & more.



PYRAMID
INTERNATIONAL
Pyramid International, UK.
www.pyramidinternational.com
Calendars, mugs & many more
printed products.

Retriever Sports
Retriever Sports, UK.
www.retrieversports.com
Dart Flights.



DecalGirl

Decal Girl, USA.
www.decalgirl.com
Mobile device skins.



ALCHEMY

ENGLAND

Apparel

Genuine Alchemy art with Italian styling
-ALCHEMY ENGLAND APPAREL-
original designs, the proper alternative.

Alchemy, the English veteran alternative lifestyle artists and designers have teamed up with an edgy Italian streetwear designer and manufacturer to bring you-

Alchemy England Apparel.

Together we have been creating unique, original, rock style clothing for guys and girls.

Go on, we dare you to be different...

To view the full inspiring collection or inquire about stocking it, please visit the website:

www.alchemyenglandapparel.com



ALCHEMY[®]™



England • 1977

Alchemy LIFETIME GUARANTEE . . . Alchemy is the best!

And we guarantee our Alchemy England crafted pewter products* to be hand made to the highest standards and of the finest materials, and will therefore repair or replace any such purchased item suffering from defects or faulty workmanship at any time, free of charge!

(*made at our Leicester workshops - please see our Guarantee and Returns Policy at www.alchemyengland.com/guarantee).

Real Pewter!

The metal used in the manufacture of all Alchemy's pewter products is the highest grade "English Pewter". Some manufacturers misleadingly use the term 'pewter' to describe alloys containing quantities of lead, cadmium and nickel plating etc. This is **NON COMPLIANT** and results in inferior, more easily made products which are heavier, softer and of a darker colour and are much more prone to tarnishing and disfigurement. Please note, many imitations and forgeries are also made of zinc, which is cheap and will easily break. English Pewter is the finest grade of pewter, (to BSEN611-1:1995 standard). Traditionally, pewter was a mixture of lead and tin, but today, English Pewter is a rich, high-grade alloy of 92% tin with copper, (plus a few legitimate trace elements), and is regarded as a 'semi-precious' metal valued second only to silver. For jewellery and accessories this is the safest tin-based alloy in use and is fully lead, cadmium & nickel compliant to California Proposition 65 for total lead & cadmium content, Commission Regulation (EU) 494/2011 (REACH) for lead & cadmium and European standard BSEN1811:2011 for nickel. English Pewter is very much harder to craft than zinc alloys and the old and primitive forms of pewter, which contain significant amounts of toxic impurities which ease production, however, please beware as these poor alloys are still used by many manufacturers around the world today.

Brand Protection:

All products, designs and images are the exclusive copyright of Alchemy Carta, England, and are registered designs and trademarks world-wide. Alchemy Studios conceive, research, design and develop all their ideas and products themselves, at considerable cost, to bring you fresh, new creations. Any attempt at forgery, imitation or passing-off endangers Alchemy's existence. Therefore, infringements will result in investigation leading to prosecution. Any assistance from our customers against piracy will be greatly appreciated. Please report via our website.

Looking after your Alchemy

Pewter, like silver, may tarnish, but can easily be polished up to a brilliant lustrous shine, using a brass or silver polishing wad and a wipe with a dry cloth. DO NOT put pewter into a salt-loaded dishwasher, which could corrode a polished surface. Alchemy Guarantee: Alchemy will gladly replace any product proven to be defective.

Trade Memberships

Alchemy Carta Ltd. are proud to be members of the Giftware Association.

Trade & Identification Marks

All products, space permitting, are marked with one or more of the following identification marks, or their derivatives :



© ALCHEMY CARTA LTD.

www.alchemyengland.com



Model is wearing -
P752 Rabeschadel Kleiner Pendant

Model : Mahafsoun
www.facebook.com/MahafsounArt

Disclaimer:

At Alchemy we make all our jewellery by hand. We are very proud and work extremely hard to achieve our high standards. However, we also have to buy-in components from other suppliers and while we do our very best to maintain this quality, we cannot always rely on their availability or consistency. We therefore reserve the right to change crystals, chains and other findings, or even to discontinue pieces if necessary and apologise for any such disappointment.

XIII LA MORT

A

W

XIII LA MORT



ALCHEMY

England 1977

40 YEARS OF ALCHEMY



1977 2017



ALCHEMY ENGLAND 1977 DEALER

