

ALCHEMY™



1977

2017

England · 1977

EXTRAORDINARY DESIGN





Model is wearing :
E333 Black Raven Earrings
P771 Epiphany Of St Corvus Necklace

Model : Mahafsoun
www.facebook.com/MahafsounArt

Contents

Neckwear
Pendants / Necklaces / Chokers / Chains / Neck Thongs ... 4 - 29

Earrings
Earrings / Ear Studs / Cuff Studs / Ear Wraps
Faux Stretchers 30 - 39

Rings 40 - 44

Buckles & Belts 45 - 47

Armwear
Bracelets / Bangles / Wriststraps 48 - 53

Timepieces
Wristwatches / Fob Watches / Fob Chains 54 - 57

Accessories
Walking Canes, Lighters, Shirt Accessories,
Beard / Hair Beads 58 - 59
Hair & Dress Accessories, Jewellery Stand, Kilt Pins,
Fragrance Diffuser 60 - 61

Drinking Vessels
Absinthe / Glassware 62 - 63
Ale Glasses / Tankards / Shot Glasses / Flask / Mugs 64 - 65

The VAULT
Resin Giftware 66 - 72

Bags
Women's & Men's Bags / Purses / Wallets 73 - 75

T-Shirts 76 - 77

Under License Products
Hanging Signs / Playing & Tarot Cards / Clocks / Flags 78 - 79

Important info 79

Licensing 80 - 81

AEA Fashion 82 - 83

www.alchemyengland.com



Masque of the Black Rose

27 miles north-west of Bucharest, Wallachia, August, 1867:

150 years ago, a glance into the great mirror of the long gallery of the lost Rovine Palace reveals very little. This, because the distinguished guests attending the legendary masquerade ball there, deep into the night on the feast of St. Levantius, were said to be, largely, revenants; a noble, boyar vampire tryst, where the dark patricians of immortality revelled in a lavish night of pure sensuality.

And by a spectral turn of coincidence, Alchemy England shares that same epoch with the exalted event of our 40th Anniversary, to be joined in celebration by all with an ardently darker side to their beings.

We are a small, but passionate company, and we have enjoyed being your humble servants of alternative ostentation for this exalted time and hope to continue to provide our darkly dedicated service to you for a very long time to come... with your loyal support. We thank you most sincerely for your patronage and enthusiasm, and we look forward to serving you in centuries to come.

Fervently yours,

The Alchemist (a.k.a. St. Levantius)

Hand Made In England

All of Alchemy England's pewter products are individually designed, modelled and developed in England by the Alchemy Studios creative art and design team. Each individual product is then hand-made with pride from the finest English Pewter by Alchemy's own highly skilled craftsmen, all at our studios and workshops in Leicester, England.

Product Key

Further Information



Online, at www.AlchemyEngland.com, you will find fuller and extended product descriptions and detail. And in News & Community there, you can go to the dedicated www.alchemygothic.com website, click on the Museum & Library link and find a choice of reference features; full backgrounds and stories behind Alchemy pieces; detailed articles on the symbols, histories and characters of Alchemy Gothic's subjects and designs; view all of Alchemy Studio's artwork; find out who is The Alchemist, and very much more.



Replacement Glassware

In the case of accidents, a product repair and glass replacement service is available to our customers. For details contact our factory directly : servicedept@alchemygroup.com



Crystals

The colour of the crystals and gemstones featured within this brochure may vary at point of manufacture, according to availability.



Swarovski Elements

Items with this symbol are made with SWAROVSKI ELEMENTS.



NEW!

Items with this symbol are new products.

Cover Illustrations

Front: 'Masque Of The Black Rose'. Back: 'St. Levantius Remains'.
© Alchemy 2016/17.

Website

All of the items shown in this catalogue can be seen with many more image views, information and in greater detail on our website, at:

www.alchemyengland.com

For the **Alchemy Lifetime Guarantee**, and **Looking after your Alchemy** etc, please see page 79.



POINT OF SALE

Display boards are available for Alchemy's retailers. Dealers please contact the sales team for more details. Boards measure approx: 27.8cm (11") wide X 36.7cm (14 1/2") high.



Neckware

All necklaces and pendants are cast and hand-made in fine English pewter, many with additional high quality crystals, Swarovski Elements and other components. Some feature hand-plating and/or other contrasting finish and all come complete upon either nickel-free chain or other necklace as shown, of appropriate length.

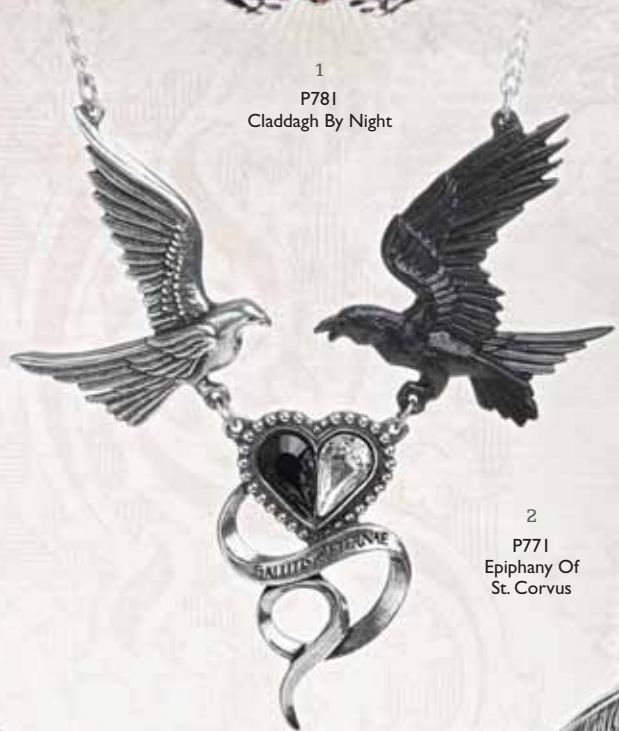
Visit our website www.AlchemyEngland.com for additional views and more detailed information.



For more information behind Alchemy's arcana of subjects, relating to products, symbols, designs and very much more, see "Further Information" on page 3.



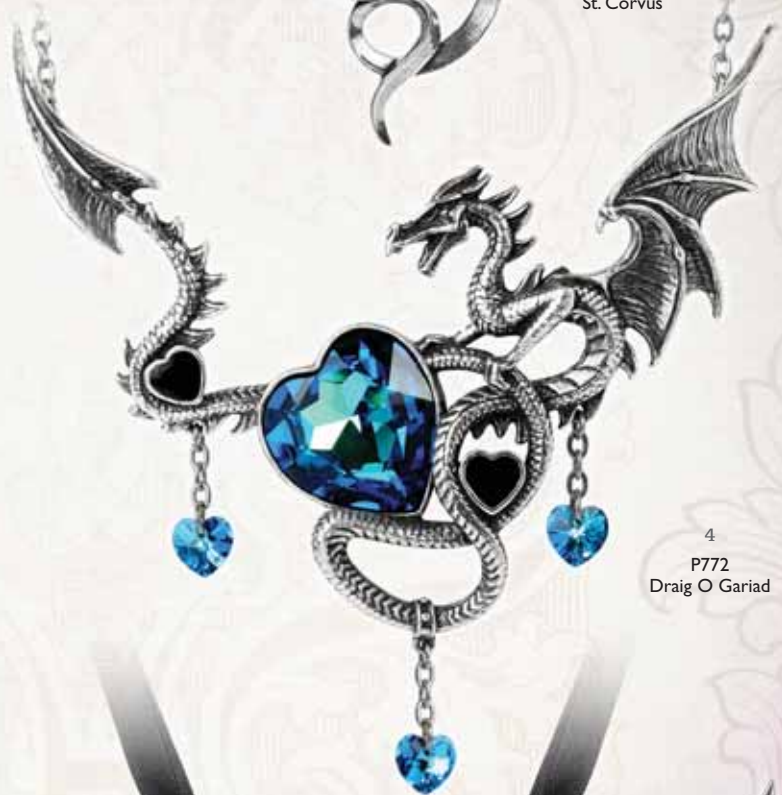
1
P781
Claddagh By Night



2
P771
Epiphany Of
St. Corvus



3
P773
The Black Swan
Romance



4
P772
Draig O Gariad



5
P779
ChaoCrucis



6
P767
My Soul From
The Shadow

ALCHEMY

England · 1971

1 P781
Claddagh By Night

Choker

Love, Friendship and Loyalty vouchsafed from the underworld; with siam Swarovski heart crystal and on black satin ribbon. **N** ‡

2 P771
Epiphany Of St. Corvus

Necklace

The dove of peace and love conjoins with the raven of conflict and battle, harmonising in romantic salvation; two-tone pewter with contrasting white & jet Swarovski crystals. **N** ‡

3 P773
The Black Swan Romance

Necklace

The rarest of all affairs; highly unlikely, impossible to predict and with the most momentous effect.; polished highlighted black pewter with siam Swarovski crystal heart. **N** ‡

4 P772
Draig O Gariad

Necklace

Distilled romance; wild Celtic passion, fought for and guarded with the strength of a dragon; with black enamel & Bermuda blue Swarovski crystals. **N** ‡

5 P779
ChaoCrucis

Pendant

The cross of faith combined with the pre-eminent star of chaos. Two-tone pewter with black hematine cabochon. **N** ‡

6 P767
My Soul From The Shadow

Necklace

A forlorn young lover's desperate search for reason and hope after the tragic loss of his beloved; on black satin ribbon and set with Swarovski tanzanite & black crystals. **N** ‡

Shown with matching earrings E380.

Model is wearing -
E286 Bestia Regalis Earrings
P772 Draig O Gariad Necklace

Model : La Esmeralda
www.facebook.com/Alternative.Model.La.Esmeralda
Photo : Silver Pearl Photography



1
P769
Voodoo Doll



2
P766
Planchette



3
P761
Pentagramatron



4
P770
Amour Éternel



5
P768
Cunning Heart



6
P776
Clutching Life



7
P775
Black Star



8
P780
Hand Of
Macbeth



9
P764
The St Petersburg Tear



10
P777
Uniskull

- 1 **P769
Voodoo Doll**
Pendant
Of ancient European origin, the traditional way to destroy a witch's power; with black cord noose & chained pewter piercing pin. **N**
- 2 **P766
Planchette**
Pendant
The spiritualist's device for communicating with the dead... ICU! Set with a realistic taxidermal eye. **N**
- 3 **P761
Pentagramatron**
Necklace
The most powerful of supernatural, magical talismans, the pentagram, multiplied; with translucent purple enamel and set with 5 Swarovski amethyst crystals ‡ **N**
- 4 **P770
Amour Éternel**
Pendant
The Ankh combined with the heart to form a powerful talisman for everlasting romance; with Swarovski silverlight crystal & black enamel. **N** ‡ **N**
- 5 **P768
Cunning Heart**
Necklace
A white witch's talismanic hex for the attraction and protection of romantic love. **N**
- 6 **P776
Clutching Life**
Pendant
Death, grasping at anything seen to glow with the light of life.... With amethyst glass orb. **N**
- 7 **P775
Black Star**
Pendant
Supernatural forces leech from the Stygian pentacle; with black enamel. **N**
- 8 **P780
Hand Of Macbeth**
Pendant
Beware the seduction of ultimate power... With black onyx cabochon. **N**
- 9 **P764
The St Petersburg Tear**
Choker
A gem, cut from the heart turned to ice, of the royal mistress to the Emperor of Russia. With large black diamond Swarovski crystal and jet dropper. ‡ **N**
- 10 **P777
Uniskull**
Pendant
The true nature of the legendary unicorn of antiquity reveals a creature of perfect ferocity. **N**

Model is wearing :
P766 Planchette Pendant
Model : **Mahafsoun**
www.facebook.com/MahafsounArt

ALCHEMY

M'ERA LUNA FESTIVAL

A UNIQUE GOTHIC COLLABORATION



◀ P783
**M'ERA LUNA CRESCENS -
TRAGICOM MOON**
Pendant

A waxing, crescent moon reflecting two skeletal faces of emotional extremes. Double-sided relief modelled skull moon pendant.



◀ P784
**M'ERA LUNA
EVIL CLOWN**
Pendant
Not for the
coulrophobic!
The malevolent
mien of a fiendish friend.
Relief modelled Evil
Clown's head pendant.

▼ E386
**M'ERA LUNA
EVIL CLOWN**
Earstuds
Relief modelled
Evil Clown's
head earstuds.



◀ P782
**M'ERA LUNA
MELIE'S MOON**
Pendant

A rare glimpse at the real man in the moon, seen through the thicket's gnarled and twisted branches. Pewter and mirror, relief modelled man in the moon pendant.

E385 ▶
**M'ERA LUNA CRESCENS -
TRAGICOM MOON**
Earrings
Double-sided relief modelled
skull moon earrings.



R213 ▶
**M'ERA LUNA
EVIL CLOWN**
Ring
Relief modelled Evil Clown's
head ring. With engraved shank.
(Sizes: W, T, Q)



For **M'ERA LUNA** information, visit: www.meraluna.de



WWW.ALCHEMYENGLAND.COM



1
P722
Alter Orbis



4
P763
The Green
Goddess



5
P743
Aequicorn

1 P722
Alter Orbis
Necklace

A pitifully brutal end to mortal existence, and an exquisite entry into the "Other World".

2 P121
Gothic Bat
Necklace

Creature of the night in full flight; on split chain.

3 P756
Aethera Dragon
Pendant

The Ether Dragon, pagan guardian of the fifth element also known as 'the spirit'. ‡

4 P763
The Green Goddess
Necklace

Inspiration to poets, artists and intellectuals, and known to Aleister Crowley as the Green Goddess absinthe. ‡

5 P743
Aequicorn
Pendant

The preserved remains of an elusive, mythical and magical creature of the shallow seas, the famed horned seahorse, identified in Solinus' lost classical bestiary; with Swarovski crystal. ‡

6 P701
Viennese Nights
Necklace

The decorous Renaissance scrollwork is subtly fashioned in the form of the quintessential creature of the night; with bat bodies of black Swarovski crystals. ‡

7 P723
Heart Of Cthulhu
Necklace

A revealing of the monstrous, crystallised soul of darkness. With faceted Swarovski crystal heart in a multi-coloured, iridescent volcano effect. On a 33" trace chain. ‡

8 P742
Keepers Of The Tyrian
Pendant

A precious, Tyrian Purple 'pearl', caged and protected by its immortal keepers, as the ancient Phoenicians prized its hallowed properties throughout antiquity; with amethyst glass ball and Swarovski crystals on 32" chain. ‡

9 P765
Villa Diodati
Necklace

Flitting through the silent candlelit darkness of the lakeside manor; the creature gives rise to the birth of Dracula.

10 P757
Villa Diodati - Chained
Necklace
With jet Swarovski dropper. ‡

Neckwear is approx. 80% of actual size.

‡ Specified crystal colours are subject to availability and may be substituted.



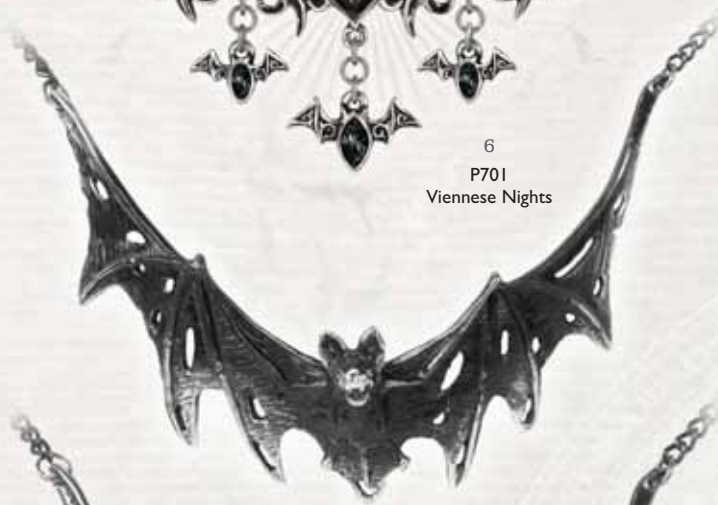
2
P121
Gothic Bat



3
P756
Aethera Dragon



6
P701
Viennese Nights



9
P765
Villa Diodati



7
P723
Heart Of Cthulhu



8
P742
Keepers Of
The Tyrian



10
P757
Villa Diodati -
Chained



Model is wearing :
P701 Viennese Nights Necklace
A108 Viennese Nights Bracelet
Model : **Lady Macbeth**
@goth.lady.macbeth

ALCHEMY
England · 1971

Made with - SWAROVSKI ELEMENTS

NECKWEAR | THE ALCHEMY ENGLAND COLLECTION 2016/17

Model is wearing -
 E339 Black Rose Studs
 R209 Sub Rosa Poison Ring
 P751 Geistalon Pendant
 Model : Sygin - @SYGIN
 Make Up : Malgorzata Nahalewicz
 Photo : Krystian Tokar



1
P711
Crystal Heart

2
P712
Empyrean
Eye:
Tears From
Heaven



5
P751
Geistalon



8
P703
Frozen Heart

**1 P711
Crystal Heart**

Pendant

A pure heart of rainbow-spangled white crystal is set inside a simple foliate frame of Victorian sentiment; Swarovski crystal. ‡

**2 P712
Empyrean Eye:
Tears From Heaven**

Necklace

The eye of God, shedding tears of grief for humanity as he regards the world from the highest firmament; with striking 'Aurore Boreale' Swarovski crystals. ‡
 Matching earrings; E350 on page31.

**3 P667
Moulin Rouge Vampire**

Necklace

The wings of a temptress in Parisian art nouveau, crystallised in shades of dusk, when the sybarites come out to play; laced with black ribbon fitting & bedecked with Indicolite crystals and dark secrets. On 18" chain. ‡

**4 P726
Dogaressa Choker**

Choker

The Dogaressa of Venice, wife of the Doge of a crumbling empire. From the rich regalia of office, a last token of forlorn devotion to the bereaved Renaissance Lady of the Palace. On a black satin hand-tie ribbon. ‡

**5 P751
Geistalon**

Pendant

Fear from the darkness - the thundering phantom of an armoured cataphract unicorn.

**6 P762
The Shadow
Of Zennor**

Necklace

The mermaid of Pendour Cove, whose ghost is forever tormented with grief for the loss of her lover. ‡

**7 P689
A Rose For Eve**

Necklace

Further tempting Eve with a black rose, eliciting sentiments of heavenly perfection, though ominously shadowed with loss. Tri-tone pewter on chain.

**8 P703
Frozen Heart**

Necklace

Dripping from the wings of love, a cold and frozen heart. Set with a diamond shape of pale blue Swarovski crystals & suspending a matching blue crystal heart. On a 18" trace chain. ‡

**9 P753
Stryx**

Necklace

Companion to Athena the Greek goddess of wisdom, and an intimately close escort into the underworld. ‡

**10 P725
Love Is King**

Couples Necklace

A sword through the heart, betokening love conquered and a forever-bond. The sword withdraws from the Swarovski crystallised heart for the two to be worn separately as tokens of betrothal. The heart is on a 22" blue ribbon & the sword, a 21" curb chain.

Pictured with alternate views showing the two separate necklaces and the sentimental quotation engraved upon the combined pieces. ‡





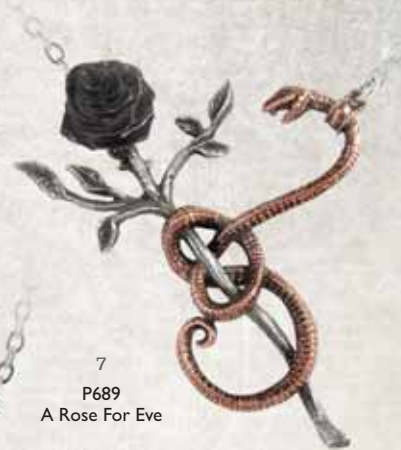
3
P667
Moulin Rouge
Vampire



4
P726
Dogaressa Choker



6
P762
The Shadow
Of Zenor



7
P689
A Rose For Eve



9
P753
Stryx



LOVE RULES
HIS KINGDOM
WITHOUT A
SWORD

10
P725
Love Is King

**P749
Elizabethan
Court Necklace**

Necklace
The motif on Robert Dudley's original, censored design for the decorative moulding above the North entrance to Kenilworth Castle, in honour of his secret love. † †

**P738
Elizabethan Choker**

Choker
From Robert Dudley's original, censored design for the decorative moulding above the north entrance to Kenilworth Castle, in honour of his secret love; on black velvet choker. Shown with matching earrings - E366. † †

See also additional items in the Elizabethan range - alternative earstuds, page 32; ring, page 40 & bracelet, page 48.



**P748
Wings Of Eternity**

Necklace
A symbol of everlasting life and love, a black rose ankh taking flight upon delicate Baroque-laced wings; tri-toned pewter on chain, with Swarovski crystal droppers. ‡ 💎
Matching earrings page 32



Model is wearing :
P748 Wings Of Eternity Necklace
E372 Ankh Of Osiris Earrings
Model : **Mahafsoun**
www.facebook.com/MahafsounArt



◀ **P705
Maryam
Theotokos Ring Cross**

Necklace
A strange and secretive pendant found in the 19th century amongst the ruins of Coustaussa Castle, Languedoc. It is impossibly encircled by a gold ring, both it and the cross being inscribed with mysterious Latin riddles. ‡ 💎



◀ **P717
Golgotha**

Necklace
"The place of the skull", and the site of the crucifixion depicted by a deferentially chained cross and black crystal mark the scene of a deep and passionate suffering. On a 19" trace chain. ‡ 💎



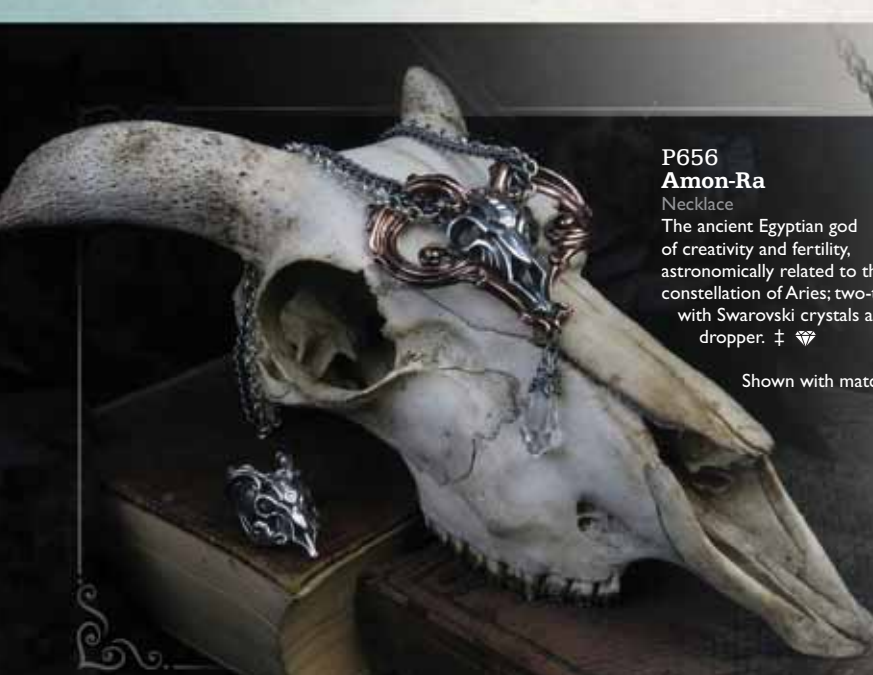
**P745
Ravenger**

Pendant
The dark and mysterious phantom; black pewter wings with polished ravens skull. Shown with extra view.



**P734
Black Talon**

Pendant
The foreboding claw of the corvus corax, clutching a sanguinary, marbelised glass orb to scry for telling omens; with freely rotating blood splattered 'dracula' sphere. Shown with side view. ‡



**P656
Amon-Ra**

Necklace
The ancient Egyptian god of creativity and fertility, astronomically related to the constellation of Aries; two-tone, with Swarovski crystals and dropper. ‡ 💎

Shown with matching ring R202.



Neckwear is approx. 80% of actual size.

‡ Specified crystal colours are subject to availability and may be substituted.



▲ P760
Ghost Seer

Pendant
The supernatural raven, Otherworld guide and trainer of magic to the sage and the clairvoyant.



▲ P728
Amber Dragon Thorhammer

Pendant
A classic, ornate and highly intricate pagan amulet of power and protection, fit for a high ranking Saxon or Viking leader; set with polished, translucent, 30 million year old amber. On a 21" trace chain. ‡



▲ P715
Ruah Vered

Pendant
The spirit and the 'Breath of Life', entwined with the romantic and sensual rose of faithful love. On a 21" trace chain.



▲ P735
Caw At The moon

Pendant
The glowing lunar disk dramatically silhouettes an already black and portentous raven, guarding its realm. On 21" black curb chain.

P719
Seraph Of Light

Necklace
The Seraphim, the celestial angels ordained to bestow charity and to protect God's throne. With pale pink cabochon and matching Swarovski crystal dropper. On a 20" doubled, split trace chain. ‡

Shown with matching earrings E351 Seraph of Light.



P702
Herz Leben

Pendant
A gothicised symbol of eternal life, the ankh, melded subtly with the background heart and prominently surmounted by a sumptuous amethystine gem; with Swarovski crystal. ‡

Shown with complimentary ring R198 Bower Troth Ring.



P736
Rabeschadel

Choker
German for 'raven's skull'; the great black birds are famous for their prophetic powers and, as the eyes and ears of Odin. On black silk ribbon for hand-tying. Shown with alternate view.



P752
Rabeschadel Kleine

Pendant
A token of the great black bird, famous for it's prophetic powers and capable of foretelling death.

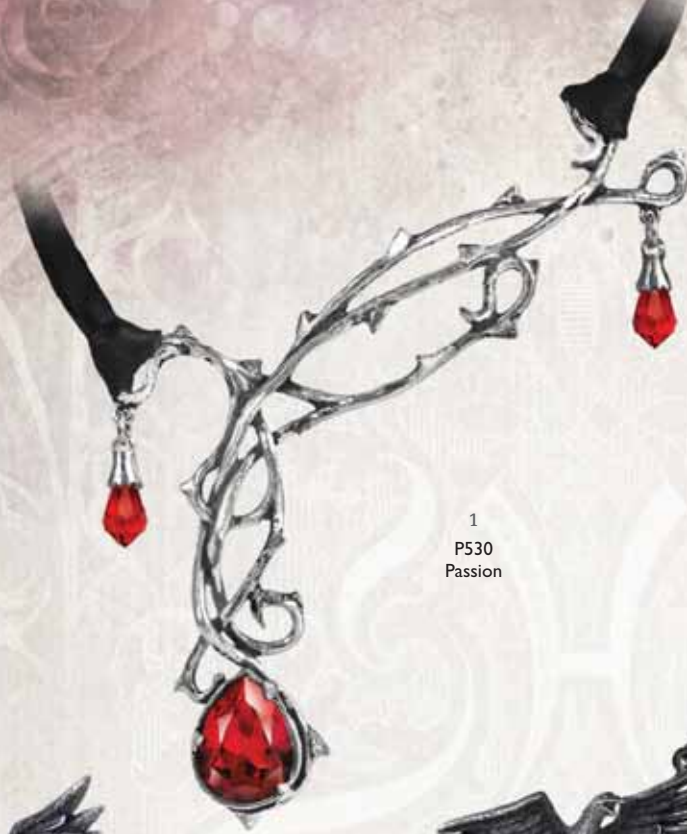


P640
She Walks In Beauty

Choker
A Delphic and lamentable line from the pen of the inimitable Lord Byron, but for whom...? The impressively mounted central black onyx stone is encircled by Byron's brass-etched poem; on black lace choker, with 2-tone pewter, black onyx cabochons & Swarovski jet teardrop droppers. ‡

Shown with matching earrings E315.





1
P530
Passion



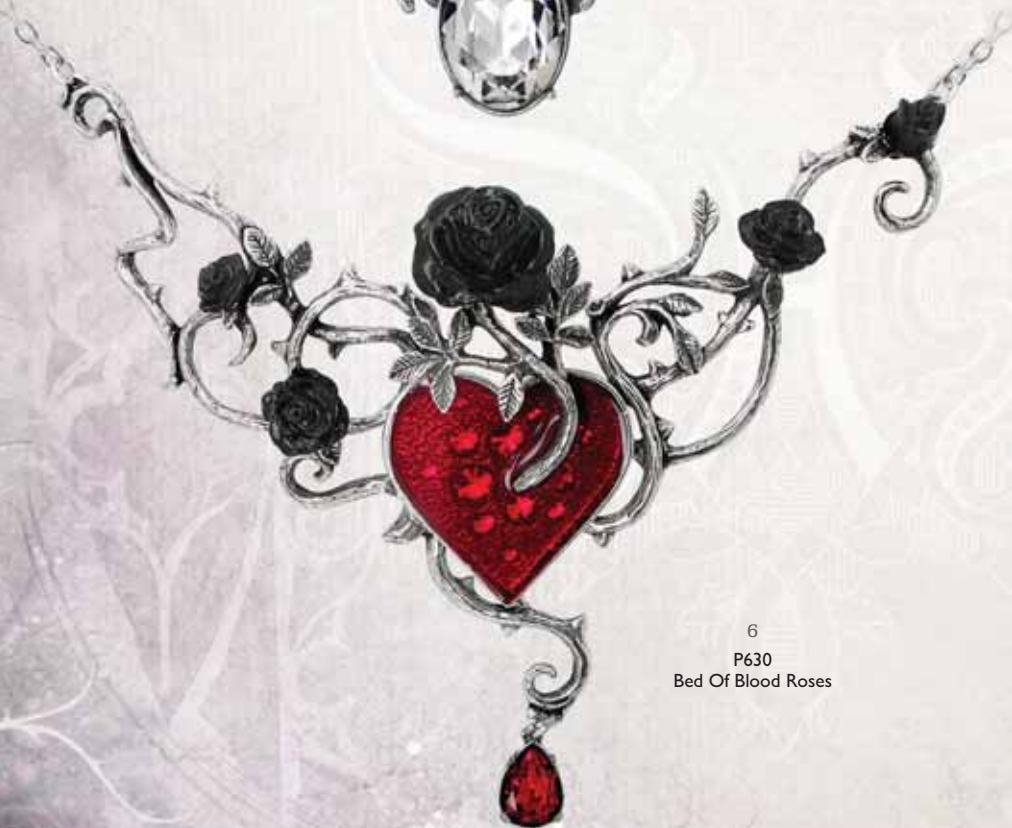
2
P758
Black Rosifix



4
P677
A Murder
Of Crows



5
AW26
Temp de
Sentiment



6
P630
Bed Of Blood Roses



7
P739
Harbinger



3
 P741
 San Esteban Pearls



1 **P530
 Passion**

Necklace
 A twisting knot of sacred thorns, weeping tears of blood-red Swarovski crystal. ‡

Matching ear-wrap E287, ring R167 and bracelet A80 (pages 35, 42 & 50).

2 **P758
 Black Rosifix**

Pendant
 The tangled cross of deep devotion, passion and eternal mystery. ‡

3 **P741
 San Esteban Pearls**

Necklace
 A jewel taken from a captured Spanish Armada officer, following the shipwreck of the San Esteban in Ireland, before he was hanged with all other survivors; with Swarovski crystal pearls and on black satin ribbon. ‡

4 **P677
 A Murder Of Crows**

Necklace
 An intimidating but darkly beautiful collection of scattering Corvidae, with Swarovski crystals, highlighted, polished black pewter and black chain. ‡

5 **AW26
 Temp de Sentiment**

Pendant / Fob Watch
 The key to happiness and contentment is so often found in the memories of past loves and times gone by... With 24mm dia. quartz movement. ‡

6 **P630
 Bed Of Blood Roses**

Necklace
 The heart is the seedbed of tangled emotions and condemned romance; black roses flourish in the heart's blood. Swarovski crystals sparkle from beneath the blood red enamel.

Matching earwrap (E329, p.35) & watch (AW22, p.57). ‡

7 **P739
 Harbinger**

Pendant
 Black: black as a young raven with a black rose, hanging from a black ribbon; be wary of the herald that wears this token! On black satin ribbon with Swarovski dropper. ‡

Model is wearing :
 P741 San Esteban Pearls Necklace
 Model : **Madame Othien**
www.facebook.com/OthienCosplay
[instagram @madameothien](https://www.instagram.com/madameothien)



1
P692
Love Imprisoned



2
P759
Lucky In Love



Model is wearing -
E365 Wounded Love Earrings
P740 Wounded Love Choker

Model : La Esmeralda
www.facebook.com/Alternative.Model.La.Esmeralda
Photo : Annie Bertram



3

P740
Wounded Love



4

P550
Bleeding Heart



5

P700
Bacchanal Rose




6

P746
Blood Heart


1 P692
Love Imprisoned

Necklace

A cruel bouquet of barbed wire, ensnaring the anguished crystal heart and tormenting the forlorn lover; with Swarovski crystal heart. ‡ 


2 P759
Lucky In Love

Necklace

A magical and fortuitous union between the Ace of Hearts and the Ace of Spades. ‡ 


3 P740
Wounded Love

Choker

A barbed and gaping hole is left bleeding, where there was once a dark and mysterious romance; with black acrylic rose on black velvet choker. Shown with matching earrings - E365. ‡ 

4 P550
Bleeding Heart


Necklace

A cascade of crystal blood pours from the cruel wounds of a tortured love; adorned with Swarovski crystal droppers. Shown with matching earrings, E272. ‡ 

5 P700
Bacchanal Rose

Necklace

A sumptuous necklace with a romantic motif hiding, or revealing, a secret libertine passion for wine and sensual pleasures; with black acrylic roses & Swarovski crystals.

For companion earrings E347 see page 33, & bracelet A106 page 50. ‡ 


6 P746
Blood Heart

Necklace

The female corsair, amorous she-wolf and destroyer of men's hearts; red enamelled heart with two acrylic roses on black ribbon.


7 P720
The Murnan Cross Of Sorrow

Necklace

Bearing the black cross of abject mourning, the tortuous dark thorns hold telling droplets of crystal blood. On black satin ribbon, to be tied. ‡ 

8 P721
The Blood Rose Heart

Necklace

A dark romance secretly blossoms from the life blood of a once broken heart; with Swarovski crystals set beneath the red enamel blood. ‡ 

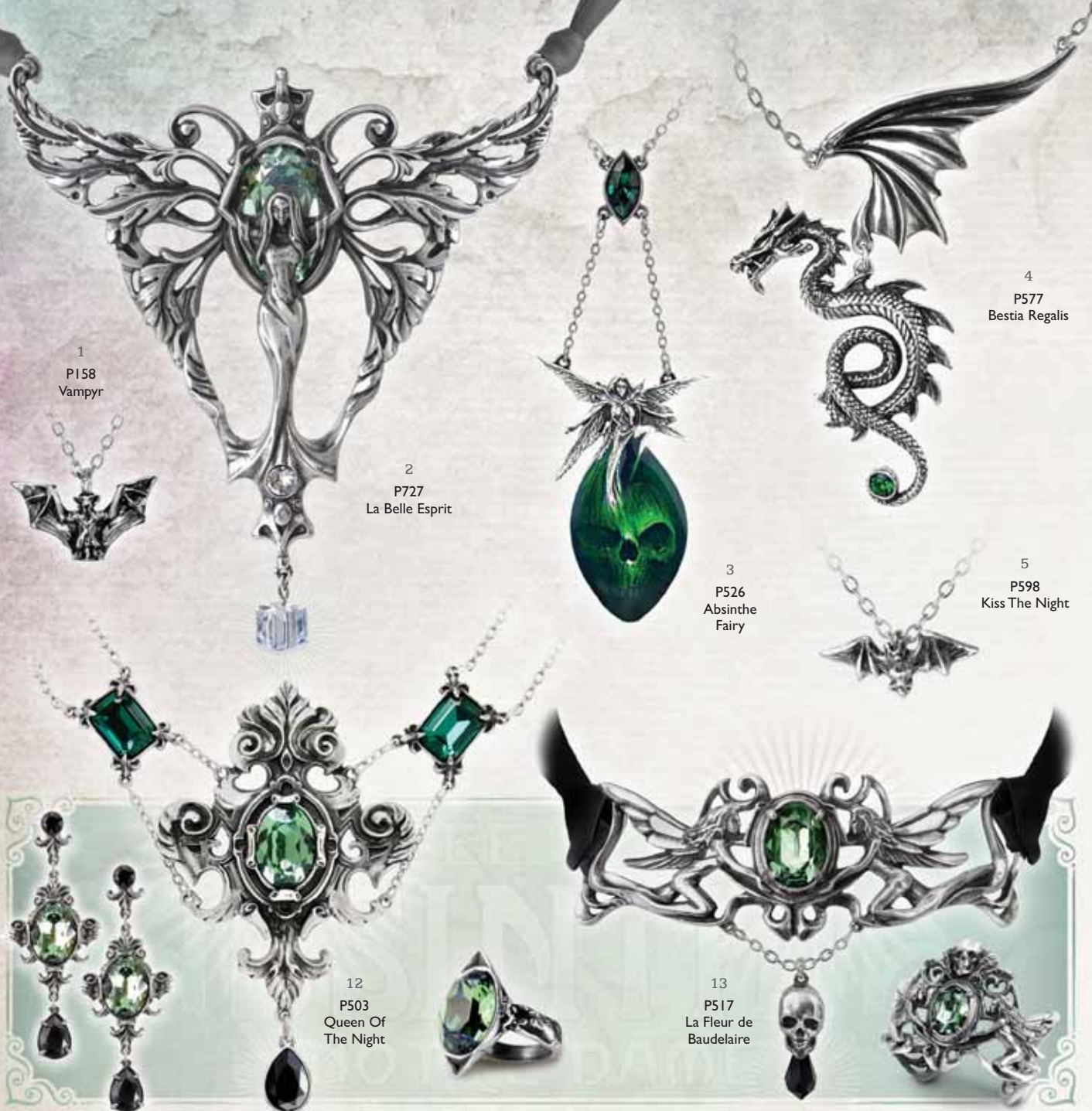
The understated companion piece to P630 Bed Of Blood Roses, specially designed for everyday wear. Matching earwrap (E329, page 35) & watch (AW22, page 57).

7
P720
The Murnan
Cross Of Sorrow



8

P721
The Blood
Rose Heart



1 P158
Vampyr
Pendant
Vision of the nocturnal nightmare.

2 P727
La Belle Esprit
Necklace
A huge and confident statement of opulence and a taste for exotic pleasures. This winged fairy is highlighted by an absinthe green, Swarovski faceted crystal, and a crystal 'sugar cube' dropper to complete the ceremony. On grey satin ribbon, for tying-off at your own length. ‡

3 P526
Absinthe Fairy
Necklace
The spirit of wormwood rises from the absinthe-green enamelled visage of mortality; with Swarovski crystal. ‡

4 P577
Bestia Regalis
Necklace
Guardian of the ornate entrance to a gothic sanctum of the otherworld spirits; with articulated wing & emerald Swarovski crystal held by the dragon's tail. Matching earring, E286 page 31. ‡

5 P598
Kiss The Night
Pendant
Discreetly tokening the owner's alternative tendencies.

6 P497
Seal Of The Sephiroth
Neck Thong
From the ancient, Judaic mystical Kabbala, are recited the names of the five elemental rulers (Ariel, Kerub, Seraph, Tharsis and Avir), of the Sephiroth, the attributes from which Yahweh created all things. With double thong fitting fastener.

7 P564
A Fairy's Dream
Necklace
Spirits of the Otherworld chasing their dreams. With 'fired' stainless steel filigree etched wing. The intricate dragonfly has vintage 'eau de nil' tinted, enamelled wings.

8 P600
La Nuit
Pendant
A crystal luxuriance on the wings of the night; with Swarovski teardrop crystal. ‡

9 P597
Om Strygia
Necklace
A vampire bat of Balkan severity and proportions.

10 P718
Key To The Secret Garden
Necklace
Shrouded in mystery, could this be the key to life itself? Set with a large emerald-green Swarovski crystal and matching droppers. On a 21" trace chain. ‡

11 P607
Sucre Vert Absinthe Spoon
Pendant
Green Sugar: a miniature wearable token of a secret life; an Alchemy absinthe spoon, signifying an existence dedicated to hedonistic pleasure and sublime aestheticism; set with large, limpid Emerald green Swarovski crystal. ‡

12 P503
Queen Of The Night
Necklace
The antipathy of the ancient Iranian prophet sage Zoroaster's 'Moral Order'. A flamboyant Swarovski crystal-laden baroque extravagance representing opulence and decadence. ‡

13 P517
La Fleur de Baudelaire
Choker
Paris' celebrated 19th 'gothic' poet, visionary and champion of the supernaturally creative powers of absinthe; with Swarovski crystals and elegant, bow-tied black ribbon. ‡
Shown with matching bracelet A69. Matching earrings E273, page 31.





6
P497
Seal Of The
Sephiroth

7
P564
A Fairy's Dream

8
P600
La Nuit

10
P718
Key To The
Secret Garden

9
P597
Om Strygia

11
P607
Sucre Vert
Absinthe Spoon



P432
Emerald Venom
Necklace
The deadly predator, poised to sink its irresistible fangs; with two Swarovski crystals. ‡💎



E169
Black Widow Studs



Model is wearing -
E169 Black Widow Studs
P432 Emerald Venom Necklace
Model : Jacqueline Collen-Tarrolly
Facebook/Instagram - @jacquelinecollentarrolly



1
P609
Diamond
Heart



2
P495
Death Of
A Vampire



3
P252
Wolf



4
P466
The Sacred
Heart



6
P502
Order Of
The Black Rose



7
P618
Osbourne's
Cross



8
P229
Wolverine
Moon



9
P560
Rose Of
Passion



11
P501
Chaosium



12
P650
Chaosagram



13
P695
The Romance
Of The Black
Rose



14
P693
O Fortuna



15
P558
Bitten
Choker

1 P609
Diamond Heart

Pendant

An accursed black dragon, with the heart of a diamond; a metaphor for a dangerous relationship, or else a powerful ally? Set with eleven Swarovski crystals. ‡

2 P495
Death Of A Vampire

Pendant

The Swarovski 'Siam' crystal heart of a vampire, immutably staked and eternally consigned to ashes and oblivion. ‡

3 P252
Wolf

Pendant

The chilling sound of crying at the moon; black pewter with pearlescent white enamel.

4 P466
The Sacred Heart

Necklace

A splendour of Swarovski crystals and enamel encrust this lavish icon to the suffering. ‡

5 P456
Renaissance Cross Of Passion

Pendant

With customary lavish Orthodox flourishing, the deep red Swarovski crystal Sacred Heart is displayed. (With 50mm extender chain). ‡

6 P502
Order Of The Black Rose

Pendant

Facsimile regalia of the cryptical, C17th fraternalis of alchemists and the Mystical Marriage ceremony.

Neckwear is approx. 80% of actual size.

‡ Specified crystal colours are subject to availability and may be substituted.

Model is wearing -
 E272 Bleeding Heart Earrings
 P456 Renaissance Cross Of
 Passion Pendant
 Model is holding -
 CWT43 Dracula's Cup
 Wine Glass

Model : La Esmeralda
[www.facebook.com/
 Alternative.Model](http://www.facebook.com/Alternative.Model).
 La.Esmeralda
 Photo : Silver Pearl
 Photography

5
 P456
 Renaissance
 Cross Of
 Passion

10
 P365
 Crystal
 Pentagram

7 P618
Osbourne's Cross
 Pendant
 Sign of a priest of darkness;
 with black enamel.

8 P229
Wolverine Moon
 Pendant
 Beware the full moon and
 the silver dagger; with two
 moonstones. ‡

9 P560
Rose Of Passion
 Necklace
 'The unattainable black rose
 bleeds for what cannot be';
 unique black pewter finish,
 studded with Swarovski
 crystals & hung on a satin
 and bead necklace. ‡

10 P365
Crystal Pentagram
 Pendant
 Swarovski crystal-set, magical
 star of protection. ‡

11 P501
Chaosium
 Necklace
 A shimmering, metallic hematine
 cabochon forms the nucleus of
 this mystery-shrouded symbol
 of anti-order; the eight arrows
 of chaos. ‡

12 P650
Chaosagram
 Pendant
 The pentagram is The Spirit, the
 chaos star, the reign of disorder
 and, therefore, behold the symbol
 of belief in the self-determination
 of the independent mind; pewter
 and black enamel.

13 P695
**The Romance Of The
 Black Rose**
 Pendant
 The most desired and most
 unattainable bloom known to
 man - an impossible dream! On
 18" chain.

14 P693
O Fortuna
 Necklace
 A transcending spirit of harmony
 and mankind and the perfect
 union of opposites; with
 Swarovski crystal. ‡

15 P558
Bitten Choker
 Choker
 'Revenant bitten, always smitten'.
 A soft, velvet band choker with
 Swarovski crystal 'bite marks'
 and cascading 'blood drops'. ‡



1
P183
Nosferatu's
Rest

2
P124
Mediaeval
Pentacle

3
P193
Black Raven

4
P698
Gothic
Devotion
Cross

9
P666
Natural Magic:
The Lore Of
The Forest

10
P346
Anguis
Aeternus

11
N203
Angel Ring
Neck Thong

12
P453
The Chemical
Wedding

17
P235
Dante's Hex

18
P447
Blood Moon

19
N182
Speculum

20
P323
The Whitby Wyrn

**1 P183
Nosferatu's Rest**

Pendant
Encapsulated in a smoke glazed pewter coffin, the Prince is viewed in his matinal retreat.

**2 P124
Mediaeval Pentacle**

Pendant
In the Middle Ages, the most common sign to ward off demonic powers; gilt two-tone with blue cabochon and Swarovski crystal. †

**3 P193
Black Raven**

Pendant
In two-tone, blackened pewter with polished mount. The Raven, the C. 20th symbol of the undead; on 27" ball chain.

Companion earrings page 32 & hair slide, page 60.

**4 P698
Gothic
Devotion Cross**

Necklace
One of the most potent and widely used amulets in the world, the Apostle's Cross. On 18" chain.

**5 P697
Ravenine**

Pendant
The raven, an ancient symbol of protection, information and dark secrets. On 18" chain.

**6 P342
Gothic Ankh**

Pendant
A vampiric hybrid of the Egyptian symbol for eternal life and the stylistic form of High Gothic; Swarovski crystal. †

**7 P397
Illuminati Cross**

Pendant
Rome: The Angels of Bernini steer the sacred path of light through the altars of science; set with Swarovski crystals. With 50mm extender chain. †

**8 P233
Cult Of Aset**

Pendant
Translucent red enamelled solar disk, horned and throned, of the great Egyptian and universal Goddess.

**9 P666
Natural Magic:
The Lore Of The Forest**

Pendant
The eye of an Ent, a giant, talking tree and oldest, wisest being to exist in the dark world of the Middle Ages; in bronzed pewter with realistic acrylic eye and multiple Swarovski crystals. †

**10 P346
Anguis Aeternus**

Pendant
The Dragon of Eternity sustains the faceted vitreal crystal of life; Swarovski crystal. †



5
P697
Ravenine

6
P342
Gothic Ankh

7
P397
Illuminati
Cross

8
P233
Cult Of Aset

13
P417
Draconkreuz

15
P58
Pentagram

14
P446
Coeur Sauvage

16
P221
Ankh Of
The Dead

21
P26
The Alchemist

22
P452
La Mort de Coeur

23
P410
Coeur Noir

**11 N203
Angel Ring
Neck Thong**

Neck Thong
The seven planetary angels are depicted within the enamel, with the reverse side inscribed with their respective names, planets and days.

**12 P453
The Chemical Wedding**

Pendant
The great metaphysical union of opposites; two-tone pewter.

**13 P417
Draconkreuz**

Pendant
Symbol of the obscure, medieval, mystic order and holders of arcane and ancient magical powers; with Swarovski crystals. †

**14 P446
Coeur Sauvage**

Necklace
Conflicting beauty and duality of the heart; with Swarovski crystal. †

**15 P58
Pentagram**

Pendant
Quintessential forces of man.

**16 P221
Ankh Of The Dead**

Necklace
Vampyre's talisman of eternity, incorporating its secret life-blood blade inside the symbolic scabbard; in antique silver-coloured pewter.

**17 P235
Dante's Hex**

Pendant
Mediaeval style pentagram.

**18 P447
Blood Moon**

Pendant
A skein of bats flitters about this deep and sinister portent.

**19 N182
Speculum**

Neck Thong
The Latin inscription reads: "All things change and we with them", the inset mirror revealing the horrifying face of the future.

**20 P323
The Whitby Wyrn**

Pendant
The legendary North Yorkshire servant of the Antichrist rampant.

**21 P26
The Alchemist**

Pendant
Classic skull of the philosopher; black rose two-tone pewter.

**22 P452
La Mort de Coeur**

Pendant
Tragic death of the heart; set with Swarovski crystals. †

**23 P410
Coeur Noir**

Choker
Graceful, enamelled winged-heart choker on black cord.





1
P669
Pinkington's
Precision
Warp-Dissection
Shears



2
P724
Orbium Coelestium
Mechanicum



3
P729
Uncle Albert's
Timepiece



4
P708
Coeur Du
Morteur

LOCKETS

P341 Orthodox Icon Locket

Pendant / Locket
Photo locket in the authentic, classic style of an Eastern Orthodox Church icon. The front is set with impressive, black oval Swarovski crystal and has brass hinges and fasteners. To take two 20 x 30mm size pictures. †



ALCHEMY
England · 1971

P496 The Reliquary Heart Locket

Necklace / Locket
An ostentatiously sized, richly embellished heart locket, to take a generous memento picture; with inner mirror, brass top hinges, magnetic catch and a unique 21" black bead & red ribbon necklace. Measures 2" high.



Illustrating decoratively etched secret love poem;
"Where I am always thou art,
Thy image lives within my heart".



5
P755
Autokinetic
Literankh

6
P592
Steam
Hammer

7
P707
Static Traction
Dagger

8
P671
Septagramic
Coercion
Gearwheel Key

10
P188
Anguistralobe

9
P737
Blast Furnace
Behemoth

1 P669
**Pinkington's Precision
Warp-Dissection Shears**
Necklace

Pre-emptive nanotechnology instrument for precisely cutting the fabric of time; articulated tri-tone pewter with Swarovski crystal adornments. ‡

2 P724
**Orbium
Coelestium Mechanicum**
Pendant

This personal calibration instrument, a gyroscopic armilla, responds to the gravitational forces and global tides that govern our own corner of reality. All rings independently spin upon their own axis, creating a functioning armillary-sphere. ‡

With reverse view, showing rotation of the individual spinning rings.

3 P729
**Uncle Albert's
Timepiece**
Choker

The perfect, miniature 13-hour Lunar-time fob watch and its essential accoutrements from the Victorian era, to grace the lithe neck of a sophisticated steampunk mistress. On black silk ribbon, for hand-tying.

Matching ear-cuff, page 38, ring, page 40 & cuff links, page 59.

4 P708
Coeur Du Morteur
Necklace

The heart and soul of a modern, mechanically minded lover, bearing the colour of their life-blood and the intricate workings of their complex mind; tri-tone pewter with Swarovski crystal. ‡

5 P755
Autokinetic Literankh
Pendant

A mid-Victorian device for the formulation of life-prolonging conjurations. ‡

6 P592
Steam Hammer
Pendant

Level mountains in a single blow, with the patent, new "Mjollnir of the Modern Age"! With bronze & gold-plated pewter.

7 P707
Static Traction Dagger
Pendant

Advanced prototype, electric-bolt arquebus; a top secret, ultra-precision, medium range, carriage mounted, rapid deployment field weapon; tri-tone pewter.

8 P671
**Septagramic
Coercion Gearwheel Key**
Pendant

Obviously, a secure launch key from a highly advanced travel-machine, with its mechanised and coded seven-lever bit; two-tone pewter & brass wire.

9 P737
Blast Furnace Behemoth
Pendant

A monstrous, though benevolent steam-powered mechanical dragon of frightening proportions, representing the might of industrial progress. ‡

10 P188
Anguistralobe
Pendant

Working miniature of C18th instrument to measure the direct path of destiny between specified heavenly bodies; pewter and brass.



1
 ULP43
 Unforgiven



2
 ULP45
 Mercy Cross



3
 ULP42
 Flame Brain



4
 ULP41
 Sharp's Cross



3
 ULP42
 Flame Brain
 Pendant
 "Idle minds are the Devil's laboratory"! With red enamel & on adjustable waxed cord thong.

1 ULP43
Unforgiven
 Neck Tie
 Coolly and sardonically gracing the neck of the silent avenger. On black plaited leather cord.

2 ULP45
Mercy Cross
 Pendant
 A Golgothian megalith of a cross, suggesting Rosicrucian sentiment. 2-tone pewter on adjustable waxed cord thong.

4 ULP41
Sharp's Cross
 Pendant
 Talismanic token of hard faith for the resolute gambling ace. With black enamel & etched black cabochon.



6
 ULP35
 Steel Guitar



5
 ULP40
 Pistonhead

5 ULP40
Pistonhead
 Necklace
 Wheels have an engine, and a spirited engine has a soul, and sometimes the soul can be dark! On 21" black chain.



7
 ULP28
 Let's Rock

6 ULP35
Steel Guitar
 Pendant
 For those who ROCK! Fully modelled, iconic 'Gretsch' style guitar, with etched copper "Rock 'n' Roll" scroll; on braided leather thong.

7 ULP28
Let's Rock
 Pendant
 Fully modelled 50's radio mic with gold-plated "let's ROCK" scroll. Check out the secret rocker hiding in the back! On 2mm ball chain.



8
 ULP9
 Tattoo Gun

8 ULP9
Tattoo Gun
 Pendant
 Fully 3-dimensional 2-tone tattoo gun. With engraved, copper-plated scroll on antique silver finish chain.





9
ULFP24
Unlock
My Heart

10
ULFP22
Forever Inked

11
ULFP19
Black Cherry

9 **ULFP24**
Unlock My Heart

Necklace
Diamond hard and locked like a safe, my heart is waiting for The One... Enamelled diamond with Swarovski crystal skulls. ‡

10 **ULFP22**
Forever Inked

Necklace
Swarovski crystal motor - coils power the tattoo machine in dead hands... and inscribe their statement of eternity. On a split, 18" trace chain with adjustable fastener. ‡

11 **ULFP19**
Black Cherry

Pendant
The stones within each succulent red cherry are horribly deceptive! With black & red ribbon, enamel & red abalone cabochon. ‡

Matching earrings ULFE20, see page 32.

12 **ULFP3**
Painted Lady

Necklace
Scrolled tattoo guns surround a pink Swarovski crystal heart; supplied on fine trace chain. ‡

13 **ULFP1**
Swallow Heart

Necklace
Two tattoo-style swallows holding a red crystal heart; on fine trace chain. ‡

14 **ULFP20**
Devil Heart

Pendant
Love is sinful, naughty and oh, so much fun! With translucent red enamelled heart & Swarovski crystal highlights. ‡

Shown with matching earrings & ring.

13
ULFP1
Swallow Heart

12
ULFP3
Painted Lady

14
ULFP20
Devil Heart

Model is wearing :
ULFP24 Unlock My Heart Necklace
ULFE22 Devil Heart Earrings

Model : Sygin @SYGIN
Make Up : Malgorzata Nahalewicz
Photo : Krystian Tokar



1
P778
Armageddon



2
P754
Skullhammer



3
VAP2
Mjollnir



4
P750
Shred Attack



6
P190
The Lost Soul



7
P146
Chaostar



8
P696
Thor's Hammer
Amulet



9
P617
Black Knight's
Cross



10
P338
Bindrune
Hammer



11
P731
Capitaneus



12
P623
Pentagratiion



13
P625
Dragon
Skull



14
P11
Double Axe



15
P296
Reaper's Arms



16
P730
Bushido



17
P686
Black Trinity
Trident



18
P687
Helm Of Awe
Ravenskull



19
P709
Satan's Key
To Hell



20
P685
Flaming V



5
P774
Jormungand

- 1 **P778**
Armageddon
Neck Thong
The battle at the end of time - the Book of Revelation. **N**
- 2 **P754**
Skullhammer
Pendant
A deathly interpretation of Mjolnir, the skull-crushing hammer of Thor.
- 3 **VAP2**
Mjollnir
Pendant
Thor's magical war-hammer.
- 4 **P750**
Shred Attack
Pendant
The quintessential metal axe.
- 5 **P774**
Jormungand
Neck Thong
The Norse legend of Jörmungandr, the 'Midgard' or World Serpent is the greatest ouroboros. **N**
- 6 **P190**
The Lost Soul
Pendant
The pitiful tortured remains of a hapless nobody.
- 7 **P146**
Chaostar
Pendant
The compass symbolising the virtues of Chaos.
- 8 **P696**
Thor's Hammer Amulet
Pendant
An amulet to Thor, to wear for protection, strength, healing and fertility. On 18" chain.
- 9 **P617**
Black Knight's Cross
Pendant
Awarded for dastardly deeds; with trans black enamel, on black curb chain.
- 10 **P338**
Bindrune Hammer
Pendant
Viking Thor's Hammer, with runes commanding energy, courage, virility and conquest.
- 11 **P731**
Capitaneus
Pendant
Head of the tribe in the ages of darkness, long since lost to the mists of time.
- 12 **P623**
Pentagraton
Pendant
Magically intoned icon of power. On a black curb chain.
- 13 **P625**
Dragon Skull
Pendant
Primitive ferocity unleashed.
- 14 **P11**
Double Axe
Pendant
Barbarian warlord's professional trade tool.
- 15 **P296**
Reaper's Arms
Pendant
Harvester of Sorrow and the badge of fate.
- 16 **P730**
Bushido
Pendant
The seven virtues of the Samurai warrior, engraved down the length of the Katana's blade.
- 17 **P686**
Black Trinity Trident
Neck Thong
The three-pronged fork of the demons, signifying the wearer's intent to cast darkness over all before him.
- 18 **P687**
Helm Of Awe Ravenskull
Neck Thong
This raven's skull has been engraved upon its head with the Icelandic stave symbol, 'Aegishjalmur'. On black square leather thong.
- 19 **P709**
Satan's Key To Hell
Pendant
The master of evil and temptation seduces you into the ways of sin, with unfettered access through the gates of The Underworld.
- 20 **P685**
Flaming V
Neck Thong
The iconic instrument of the rock and metal axeman is totally on fire! On black leather thong.

Model is wearing -
P774 Jormungand Neck Thong
Model : **Dark Wolf**
<https://www.facebook.com/Dark.Wolf.Model/>
Photo : **Anthony Mes - Photographie**
<https://www.facebook.com/anthonymesphotographie/>

ALCHEMY
England · 1971

Garrinas

ALCHEMY
England • 1971

Model is wearing -
E380 My Soul From The Shadow Earrings
P767 My Soul From The Shadow Pendant
Model : **Elisanth** - www.elisanth.com
Photo : **Zatsepin Alex** - www.zatsepin-alex.com
Lenses : **Samhain** - www.samhaincontactlenses.com

All earrings are cast and hand-made in fine English pewter many with additional high quality crystals, Swarovski Elements and other components.

Ear-wires are silver plated; Studs have surgical steel posts and plastic scroll backs.



For more information behind Alchemy's arcana of subjects, relating to products, symbols, designs and very much more, see "Further Information" on page 3.

Earrings are sold singly unless indicated in pairs.

Visit our website:
www.alchemyengland.com
for additional views of all Earrings.

Earrings are shown approx. 85% of actual size.

† Specified crystal colours are subject to availability and may be substituted.



E354 Amourankh
Stud Earrings (pair)
An elemental symbol of everlasting love. With Swarovski crystals & black enamelled heart studs. ‡ †



E378 Hand Of Macbeth
Dropper Earrings (pair)
Beware the seduction of ultimate power... With Swarovski jet hematite crystals. N †



E377 Clavitractron
Dropper Earrings (pair)
The archetypal reflection of steampunk ethos; copper-plated. N



E380 My Soul From the Shadow
Stud Earrings (pair)
Alchemy's rendition of Edgar Allan Poe's 1845 masterpiece, The Raven. With Swarovski tanzanite crystals. N †



E272 Bleeding Heart
Stud Earrings (pair)
Dripping with bloody Swarovski crystals, betraying the emotional grief inside. With matching necklace - P550, (p.17). ‡ †



E286 Bestia Regalis
Stud Earrings (pair)
Dramatically elegant regal beasts, articulated to attract enviable attention; with Emerald Swarovski crystals. Matching pendant - P577, (p.18). ‡ †



E350 Empyrean Eye: Tears From Heaven
Stud Earrings (pair)
The eye of God, shedding tears of grief for humanity as he regards the world from the highest firmament. With striking 'Aurore Boreale' Swarovski crystals. ‡ † Matching pendant - P712, (p.10).



E264 Empress Eugenie
Stud Earrings (pair)
After the rare, massive blue heart diamond, which legend says once belonged to the empress consort of Napoleon III (1852-1870), before it was 'discovered' by Cartier in 1908; with Swarovski blue heart crystals. ‡ †



E273 Queen Of The Night
Stud Earrings (pair)
The epitome of wickedness. A Swarovski crystal-heavy pair of Baroque earrings matching their sister necklace - P503, (p.18). ‡ †



E315 She Walks In Beauty
Dropper Earrings (pair)
Lord Byron's lamentable words for an unknown lover; complementing the P640 necklace (p.13); with etched brass, cabochons & Swarovski crystals. ‡ †



E351 Seraph Of Light
Stud Earrings (pair)
The Seraphim, the celestial angels ordained to bestow charity and to protect God's throne. Pale pink oval cabochon and with a matching Swarovski crystal dropper. Matching necklace on (p.13). ‡ †



E375 Mesukmus
Stud Earrings (pair)
'Sweet Death' in Hebrew, the language of the angels. ‡ †



E310 Marie Antoinette
Dropper Earrings (pair)
Miniature guillotine blades, bearing the last traces of aristocratic life; with Swarovski Siam crystals. ‡



E365 Wounded Love
Dropper Earrings (pair)
A gaping hole is left where there was once a dark and mysterious romance; black pewter rose stud with heart dropper. See page 17 for matching choker P740.



E314 Ivy League
Dropper Earrings (pair)
The three skulls of ancient wisdom sit sagely upon each ivy-adorned ear hoop.



E367 Wings Of Eternity
Stud Earrings (pair)
From the symbol of everlasting life and love, the delicate Baroque-laced wings drip with Swarovski crystal promise. With matching necklace P748, page 12. ‡



E271 Mirror Of The Soul
Stud Earrings (pair)
The dark, gothic heart reveals death within.



E363 Sorrow Cross
Stud Earrings (pair)
The black cross urdee of abject mourning; black enamel cross with fine black chain.



E333 Black Raven
Dropper Earrings (pair)
Dark and sultry companions make sure your admirers do not underestimate your character. Companion pendant - P193, (p.22).



E371 Machine Head
Stud Earrings (pair)
Gears of intellectual industry; tri-tone pewter.



E364 Deadskull
Dropper Earrings (pair)
The desiccated remains of a former human being; pewter skulls suspended by fine chain.



E9 Skeleton
Dropper Earrings (pair)
It all comes down to this. The last remains of master and slave alike.



E373 Awaiting The Eventide
Stud Earrings (pair)
Roosting vamps, silent and motionless, await the final vestige of light - so, the raptors may play...



E372 Ankh Of Osiris
Stud Earrings (pair)
The Egyptian god Osiris, bequeaths the 'Breath Of Life' upon those to be blessed with immortality. ‡



ULFE22 Devil Heart
Stud Earrings (pair)
Love, is sinful, naughty and oh, so much fun! With translucent red enamelled heart & Swarovski crystal highlights. ‡
Matching pendant, page 27 and ring, page 40.



ULFE20 Black Cherry
Stud Earrings (pair)
The stones within each succulent red cherry are horribly deceptive! Pewter & 2 colour enamel earrings. Companion necklace, page 27.



ULFE15 El Corazon
Dropper Earrings (pair)
Flight of the heart; pewter winged earrings carry blue heart Swarovski crystal droppers. ‡



E346 Elizabethan
Stud Earrings (pair)
A symbol of a condemned and secret love from the age of Shakespeare. With suspended Swarovski amethyst heart crystals. ‡
See also pages 11, 37, 40 & 48 for more in the Elizabethan collection.

Earrings are approx. 85% of actual size.

‡ Specified crystal colours are subject to availability and may be substituted.



E347
Bacchanal Rose

Stud Earrings (pair)

A romantic motif concealing a secret libertine passion for wine and sensual pleasures; with black acrylic roses & Swarovski crystals. ‡

Matching necklace page 17 and bracelet page 50.

ALCHEMY
England · 1977

Model is wearing -
E347 Bacchanal Rose Earrings
P700 Bacchanal Rose Pendant
Model : La Esmeralda
www.facebook.com/Alternative.Model.La.Esmeralda
Photo : Silver Pearl Photography

Ear-Wraps

Created and developed by Alchemy from 2006, 'stud ear wraps' are a unique concept which decorate the whole ear, wrapping around it and fixing in place with a regular surgical lobe-stud. It is critical that the wrap can be formed to fit the ear properly, as no two ears are alike in size or shape. Alchemy's ear wraps are made of English pewter which is perfect for gently bending into shape. Cheap imitations will usually not bend, but snap, or are too heavy for comfort.



For more information behind Alchemy's arcana of subjects, relating to products, symbols, designs and very much more, see "Further Information" on page 3.



▲ **E389 Fairy Grove**

Stud Ear-Wrap (left)
A whispering fairy familiar, your constant friend and benevolent guide. **N**



◀ **E390R & E390L Arboreus**

Stud Ear-Wrap (right & left)
An elf's ear of swirling, Victorian, verdant flourishes. Available in both right & left ear versions. **N**



E263 Sylvanus

Stud Ear-Wrap (right)



In Roman mythology, Sylvanus is god of the woods. This ornate, baroque ear-covering is supported by a chain behind the ear; Swarovski Siam crystals. † ♦

E345 Night Sky

Stud Ear-Wrap (left)



A colony of nocturnal bats arise against the stars, to silently invade the tranquility of the night; black pewter bats with Swarovski crystal 'stars' & dropper. † ♦

E296 The Harvester

Stud Ear-Wrap (left)



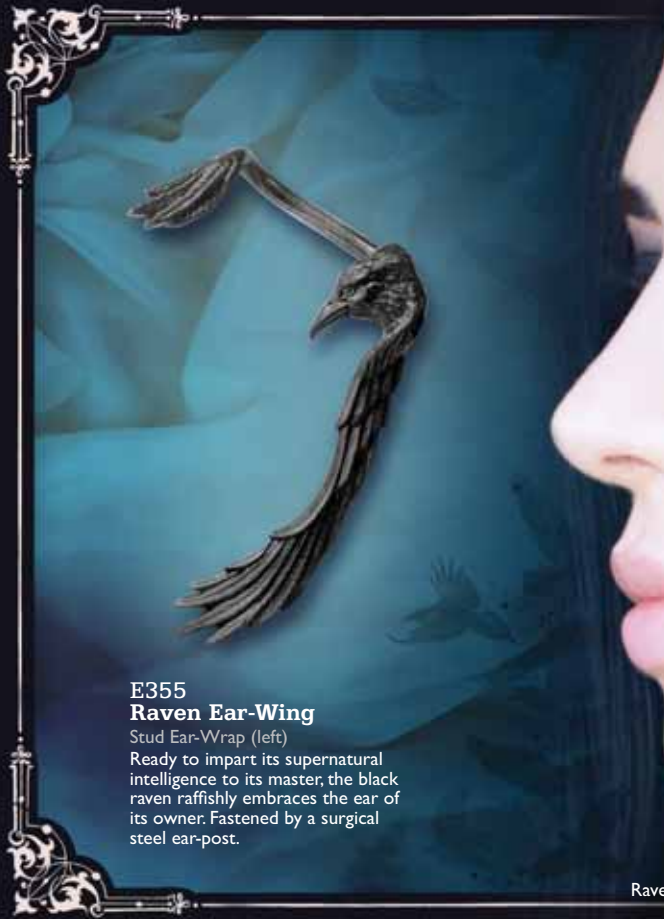
The Grim Reaper's soul-taker and symbol for the end of mortal life. The scythe wraps over the ear with the blade hooking over the top, and a stud securing it from the skull at the bottom.

E330 Crystal Dragon

Stud Ear-Wrap (right)



With dramatically outstretched wings, the writhing dragon flaunts its Swarovski crystal dropper. † ♦



**E355
Raven Ear-Wing**

Stud Ear-Wrap (left)

Ready to impart its supernatural intelligence to its master, the black raven raffishly embraces the ear of its owner. Fastened by a surgical steel ear-post.

Model is wearing :
Raven Ear-Wing Ear Wrap E355

Model : Mahafsoun
www.facebook.com/MahafsounArt



**E376
A Night With Goethe**

Stud Ear-Wrap (left)



Nocturnal stirrings, returning from the grave in search of a lost lover, the creature roams. **N**

**E287
Passion**

Stud Ear-Wrap (left)



A bramble of thorns entangles the ear, weeping tears of Swarovski crystal blood. ‡ †

See also pages 14, 42 & 50 for coordinating items.

**E344
Chained Love-Rose**

Stud Ear-Wrap (left)



An elegant, but distinctly gothic display of sentiment for those with a Medieval sense of romance. With a fine black curb chain around the back of the ear. ‡ †

**E329
Bed Of Blood Roses**

Stud Ear-Wrap (left)



The poetic tragedy of a bleeding heart; with black roses and Swarovski crystals below the enamelled heart. ‡ †

Matching necklaces page 14 & 17, earstuds page 37, & watch page 57.



E374 Daughters Of Darkness
 Stud Ear-Wrap (right)
 Seven grieving sisters turned into heavenly stars; the winter constellation known as the Pleiades. ‡

Model is wearing :
 E374 Daughters Of Darkness Ear Wrap
 Model : **Danielle Aguirre**

E309 Kraken
 Stud Ear-Wrap (left)



Enveloped by overwhelmingly powerful and limber tentacles from the deep.

E361 Osberg Dragon
 Stud Ear-Wrap (left)



Inspired by the intricate, Norse Art wood carving decorating the great 9th century Viking ship discovered beneath a burial mound in Norway.

E276 Rose Of Passion
 Stud Ear-Wrap (left)



'The unattainable black rose bleeds for what cannot be'; unique black pewter finish, studded with Swarovski white & 'blood drop' crystals. For companion pieces, see P560 (page 20). ‡

E234 Temptation
 Stud Ear-Wrap (left)



The serpent of Eden twists through and around the beguiled wearer's ear.



THE DRAGON'S LURE



- 1 E274R The Dragon's Lure**
 Stud Ear-Wrap (right)
 Like a whispering shoulder devil, or a witch's familiar, this dragon, piercing through the earlobe, tempts the wearer into acts of shameful depravity.
- 2 E274B Dragon's Lure Black**
 Stud Ear-Wrap (right)
 Noir version of the now immortal dragon wrap.
- 3 E274L Dragon's Lure Left**
 Stud Ear-Wrap (left)
 A matching, left-ear version of the infamous dragon wrap.



Stud Pairs



1 E384 Thor Hammer Studs

Stud Earrings (pair)
A Norseman jewel-smith's precision, miniature Thor's hammer. **N**

2 E252 Matins

Stud Earrings (pair)
The name of the night prayer service in the Roman Catholic and Eastern Orthodox churches and the time when bats are out to play! †

3 E168 Pentanoir

Stud Earrings (pair)
Hand polished pentagram noir studs with black enamel fill.

4 E353 Industrilobe

Stud Earrings (Pair)
The quintessential cogwheel, personifying dynamic industrial and intellectual progress.

5 E379 Claddagh Heart

Stud Earrings (pair)
Love and Loyalty from the 17th century, traditional Irish symbol; set with Swarovski Siam heart crystal. **N** †

6 E147 Alchemist Studs

Stud Earrings (pair)
Miniature Alchemist skulls for Acolytes incognito.

7 E342 Mortuarium

Stud Earrings (pair)
Skulls, staring deeply into the oblivion of a long-past mortal existence.

8 E76 Death Studs

Stud Earrings (pair)
Miniature pewter skull studs, for the discreet fatalist.

9 E164 Pentagram Studs

Stud Earrings (pair)
Miniature pentagrams for magical discretion.

10 E359 Rabeschadel

Stud Earrings (pair)
The great black bird, famous for its prophetic powers, being Odin's messengers and capable of foretelling death.

11 E279 Whitby Wyrms

Stud Earrings (pair)
The image of an English legend; with surgical steel posts.

12 E332 Heart's Blood

Stud Earrings (pair)
Swarovski crystals glitter just under the surface of the clear, blood red enamel. (To match E329 earwrap). †

13 E169 Black Widow Studs

Stud Earrings (pair)
Worn to demonstrate contrition or predatory instincts.

14 E338 Love's Blossom

Stud Earrings (pair)
Sparkling red heart Swarovski crystals burst from the sprig of life. †

15 E339 Black Rose Studs

Stud Earrings (pair)
The alchemical mystery personified by this impossibly rare flower. Matches E329, or E276 ear-wraps.

16 ULFE3 Tattoo Gun

Stud Earrings (pair)
Scrolled tattoo gun stud earrings.

17 ULFE5 Live Now

Stud Earrings (pair)
Live now, Die later; skull studs.

18 ULFE4 Swallows

Stud Earrings (pair)
A pair of tattoo style swallow stud earrings.

19 E186 Batstuds

Stud Earrings (pair)
Discreet aural accents for the nocturnal hunter.

20 E366 Elizabethan Cross

Stud Earrings (pair)
From Robert Dudley's original, censored design for the decorative moulding above the North entrance to Kenilworth Castle, in honour of his secret love. †
Additional items in the Elizabethan range - choker & necklace, page 11; alternative earstuds, page 32; ring, page 40; bracelet, page 48.

Stud Pairs are approx. actual size.

Made with - SWAROVSKI ELEMENTS

Cuff Studs

E381 Thor Donner

Cuff Stud Earring (single)
A Norsemen's miniature
Thor's hammer and 'thunder'
rune-cuff. †

E278 Mortal Remains

Cuff Stud Earring (single)
Traces of human
existence cling
desperately to life.

E247 Chaosium

Cuff Stud Earring (single)
A hematine cabochon,
chaos-arrows stud, with
shackled cuff. ‡

E223 Diamond Pall

Cuff Stud Earring (single)
Swarovski crystal-rich
afterlife fetter. †

E196 Pentagram

Cuff Stud Earring (single)
Mystical seal of success.

E382 Rosa Nocta

Cuff Stud Earring (single)
Conjuring the amorous
magical properties of a
combined pentagram and
a black rose. †

E349 Uncle Albert's Timepiece

Cuff Stud Earring (single)
The perfect miniature, 13-hour
Lunar time fob watch and its
accoutrements from the Victorian
era; two-tone copper & pewter
with glass imitation watch face.
With matching choker, ring & cuff
links - pages 24, 40 & 59.



FAUX EAR STRETCHERS

Polished pewter,
double-ended ear studs,
(with surgical steel posts),
for regular pierced ears.
Thoroughly convincing, the
clever construction creates
an appearance exactly like a
stretched ear!

▲ E308 Serket

Faux Stretcher (single)
Symbol of the eponymous,
ancient Egyptian goddess -
protector against scorpion stings.

▲ E280 Impalare Cross

Faux Stretcher (single)
Pierced by the enduring symbol
of sacrifice; black-enamelled
cross piercing the earlobe, with
surgical steel post.

▲ E257 Cesare's Veto

Faux Stretcher (single)
The Cesare Borgia's Florentine
solution to all political problems.
With Swarovski crystal. ‡



Single Studs



E256 Hang Man's Noose
Single Stud Earring
The most squalid and degrading of ends to the life of a mortal.



E210 Morticia
Single Stud Earring
Amethyst Swarovski crystal droplet suspended from the talons of a volitant bat. ‡



E221 Spike Cuff
Single Stud Earring
Piercing statement.



E313 Longbone
Single Stud Earring
A discreet yet disturbingly sinuous collection of human ossuary.



E130 Rose Thorn Cross
Single Dropper
An Alchemical cross of rose thorns surmounted by the skull of the Master. With Swarovski crystal. ‡



E357 Bushido
Single Dropper
The seven virtues of the samurai warrior, engraved down the length of the katana's blade.



E175 Wyverex Dragon
Single Dropper
Rare Medieval beast of proven origins and powerful influence.



E341 Skellimation
Single Stud Earring
This devil's fool flaunts the sobriety of mortal life; animated skeleton ear stud.



▲ **E362 Doom Faux Stretcher**
Faux Stretcher (single)
The black face of ruin glares out from a red hell-hole within the spiked stud.



▲ **E321 Wraith Spine**
Faux Stretcher (single)
7mm curved vertebrae with demon's skull end.



▲ **E325 Dragon's Orb Claw**
Faux Stretcher (single)
7mm dragon's talon with the end of an 8mm amethyst crystal orb, clutched by dragon's claws. ‡



▲ **E368 Thunderstick**
Faux Stretcher (single)
The richly decorated Nordic Thor's hammer empowers its wearer both visually and spiritually.



▲ **E356 Magic Ram's Horn**
Faux Stretcher (single)
Intoned with outrageous Crowleyan symbolism and ritual Pagan intent.



▲ **E320 Tomb Skull Horn**
Faux Stretcher (single)
7mm curved horn with plain skull end.



▲ **E324 Tor Dragon**
Faux Stretcher (single)
8mm spine'd tail with dragon's head end.



R210 Claddagh By Night
Ring
Love, Friendship and Loyalty vouchsafed from the underworld; with siam Swarovski heart crystal.
(Sizes: L, N, Q, T) ‡ †



R206 The Sophia Serpent
Ring
The Ouroboros, ancient Gnostic symbol of eternity, rebirth and the unity of everything, representing the sun and soul of the world.
(Sizes: L, N, Q, T, W, Y) ‡ †



R199 The Dogaressa's Last Love
Ring
A token of forlorn devotion from The Lady of the palace in Renaissance Venice; with suspended blue Swarovski crystal heart.
(Sizes: L, N, Q, T) ‡ †
Companion bracelet (A104), page 48 & choker (P726), page 11.



R212 Demon Black & Angel White
Ring
On each ring are inscribed seven magical signatures; one of angels, the other of 'demons'. Summon the assistance of the spirits!
Unique split ring in contrasting light & dark finishes. (Sizes: N, Q, T, W) ‡ †



ULFR6 Devil Heart
Ring
Love, is sinful, naughty and oh, so much fun! With translucent red enameled heart & Swarovski crystal highlights.
(Sizes: N, Q, T) ‡ †
See companion necklace (ULFP20), page 27 & earstuds (ULFE22), page 32.



R156 Elizabethan
Ring
Lord Dudley's lost sign of devotion; Swarovski crystal.
(Sizes: L, N, Q, T) ‡ †
Additional items in the Elizabethan range - choker & necklace, page 11; earstuds, page 37; alternative earstuds, page 32; bracelet, page 48.



R145 In Memoriam
Ring
A silent and sombre dedication expressed in this polished black-enameled, Victorian mourning ring.
(Sizes: L, N, Q, T, W)



R208 Memoria Mortalis
Ring
In memory of death, as our forebears so readily observed, with its constant threat to all, pervading every facet of life. (Sizes: N, Q, T, W, Y)



R134 Betrothal
Ring
A miniature rococo masterpiece of romantic metaphor, with the blood red enameled heart of passion.
(Sizes: L, N, Q, T, W)
Companion bracelet (A89), page 50.



R203 Uncle Albert's Time Piece
Ring
The perfect, miniature 13-hour Lunar-time fob watch, inscribed with 'Hora Morti' - the 'Hour of Death'. (Sizes: N, Q, T, W, Y)
Additional items - choker, page 24 & earcuff, page 38.



R202 Amon-Ra
Ring
The ancient Egyptian god of creativity and fertility, astronomically related to the constellation of Aries.
(Sizes: N, Q, T, W) ‡ †
Matching necklace (P656), page 12.



R198 Bower Troth Ring
Ring
The lady's special, hidden sanctuary where she may enchant, charm and engage the object of her desires.
(Sizes: L, N, Q, T) ‡ †



R190 Starchaser
Handspan Ring
Gliding gracefully between the clouds, the fantastical creature flies to catch the stars from the sky. Adjustable split ring, partly spanning three fingers.
Adjustable Sizes:
L - N, (Small), Q - T, (Med) ‡ †



R120 Absinthe Fairy Spirit Crystal
Ring
A Swarovski emerald pond of illusion and creation.
(Sizes: L, N, Q, T) ‡ †



R205 Black Consort
Handspan Ring
The majestic raven, wings outstretched, gliding alongside its adopted squire offering protection and guidance.
(Sizes: N, Q, T, W, Y)



Rings

Alchemy Rings are hand cast & made in England from fine English pewter and in many cases including Swarovski Elements, other high quality crystals and additional high quality materials and finishes.

Visit our website www.alchemyengland.com for additional views of all Rings.



For more information behind Alchemy's arcana of subjects, relating to products, symbols, designs and very much more, see "Further Information" on page 3.

Model is wearing -
P770 Amour Éternel Pendant;
R211 Amour Éternel Ring;
E354 Amourankh Earrings
Model : Mahafsoun
<https://www.facebook.com/MahafsounArt>



R211 Amour Éternel Ring

The Ankh combined with the heart to form a powerful talisman for everlasting romance; with Swarovski silverlight crystal & black enamel. (Sizes: L, N, Q, T) **N** †



**R167
Passion Ring**
Ring
The tortuous thorns of self sacrifice bled with tears of Swarovski crystal. Companion pieces: Pages 14, 35 & 50. (Sizes: L, N, Q, T) ‡



**R72
Caput Mortem**
Ring
Three deaths for the auspicious; one death's head for each mortal life. (Sizes: N, Q, T, W)



**R71
Agla**
Ring
Five magical talismans of profit and protection. The central Kabbalistic sigillum "Agla", stands for 'Thou art mighty forever O Lord', with the remaining four seals for love, memory, safety and peace. (Sizes: N, Q, T, W)



**R105
Shadow Of Death**
Ring
Large, deep burgundy, faceted Swarovski crystal mounted in a circle of ivy-grown skulls. (Sizes: L, N, Q, T) ‡



**R124
Angel's Eye**
Ring
His deep, sapphire crystal eye is engraved with the pentagram from the seal of the archangel Metatron. (Sizes: L, N, Q, T, W) ‡



**R86
Draconis Celtica**
Ring
The head of a dragon lurks beneath this pool of a Celtic spring. (Sizes: N, Q, T)



**R23
Roseus Pentagram**
Ring
A classic black enameled pentagram, highly polished & flanked with Alchemical roses of wisdom. (Sizes: N, Q, T, W, Y)



**R188
Britannia Gem**
Ring
The sparkling splendour of the huge, rich, Montana blue Swarovski crystal is set into a suitably pompous lion's head frame mount. (Sizes: N, Q, T) ‡



**R44
Dr. Von Rosenstein's Induction Principle Ring**
Ring
In pewter and solid brass, an authentic reproduction of Dr. Von Rosenstein's indispensable key to the induction matrix. (Sizes: N, Q, T, W, Y)



**R73
Deus Et Natura**
Ring
The triumphant harmony of Nature and The Creator. The solid bronze Latin band says 'God and Nature do not work together in vain'. (Sizes: Q, T, W, Y)



**R149
Hi-Voltage Toric Generator Ring**
Ring
Unusual, early but very highly efficient power generator to augment the energy demands of Victorian hi-tech gadgets. (Sizes: N, Q, T, W, Y)



**R193
Viperstone**
Ring
The serpent sinks its fangs into an energising carnelian, to suffuse its properties of passion and desire. (Sizes: L, N, Q, T, W) ‡



**R123
Broken Heart**
Ring
Double-sided ring of love, pain and sorrow, featuring an enameled heart obscuring a deep-set skull. (Sizes: L, N, Q, T)



**R36
Great Wish Ring**
Ring
The Latin inscription 'MEUS OPUS MAGNUS' is the Alchemical spiritual wish for 'The complete fulfillment of life'. (Sizes: N, Q, T, W, Y)



**R24b
Eye Of The Devil**
Ring
Sinister blood red crystal eye, staring down any onlooker. (Sizes: N, Q, T, W) ‡



**R178
Automaton's Eye**
Ring
A surviving, stand-alone animated integrant of the advanced, life-sized android from the famous workshops of Ezekiel Rosenstein; C 1865. 3-tone pewter ring with opening eye-lid exposing a realistic, taxidermal eye. (Sizes: Q, T, W, Y)



**R183
Vis Viva**
Ring
The living power; overwhelming energy and the force of life encircles and liberates the wearer; with Swarovski crystals. ‡
See companion bracelet, page 50. Adjustable Sizes: Small (L - N), Med (Q - T) & Large (W - Y)





**R209
Sub Rosa Poison Ring**

Poison Ring

Beneath the rose, (a symbol of secrecy), there may lie a fatal draught of toxin; with hinged lid to secret compartment & Swarovski crystals.

(Sizes: L, N, Q, T) ‡

INTERNATIONAL SIZE GUIDE

English:	L	N	Q	T	W	Y	Z1
American:	6	7	8½	9½	11	12	13
European:	12	15	18½	21	23	27	28
German:	1.7	1.8	1.9	2.0	2.1	2.2	2.3
Japanese:	10	13	16	19	23	25	27

Alchemy's rings are available in various sizes. The sizes stated are intended as a guide only, and are **NOT** strictly an accurate indication of measurement.

DIAMETER RING GAUGE

To gauge your ring size using the circular guide, place a suitably sized existing ring over the size indicators here and choose the closest size to the inner circle.



LINEAR RING GAUGE

To gauge your ring size using the linear guide, wrap a 5mm wide X 10cm long (approx.) strip of paper around the required finger and mark the point of overlap with a pencil. Then lay flat against this linear guide.



Model is wearing -
E339 Black Rose Studs
R209 Sub Rosa Poison Ring
P560 Rose Of Passion Necklace
Model : Sygin - @SYGIN
Make Up : Malgorzata Nahalewicz
Photo : Krystian Tokar



**R204
Necrogram**

Ring
Communicating with the dead; the intelligence of this skull transcends its apparent vacancy. (Sizes: Q, T, W, Y, ZI)



**R6
Death Ring**

Ring
The famous blank, stark expression of the face of death. (Sizes: N, Q, T, W, Y)



**R207
Desolation**

Ring
The black winged-skull of survival arises from the ashes of destruction. (Sizes: N, Q, T, W, Y)



**R201
Rabeschadel**

Ring
An authentically detailed raven's skull, in polished pewter and set upon a split ring shank. (Sizes: Q, T, W, Y, ZI)



**R175
Pentagratiion**

Ring
Magically intoned icon of power. (Sizes: Q, T, W, Y)



**R171
Thor's Runehammer**

Ring
With runes for 'Blood' & 'Thunder'. (Sizes: Q, T, W, Y, ZI)



**R173
Runeband**

Ring
Nordic runes recite the mantra, 'Poetry is in Battle'. (Sizes: Q, T, W, Y, ZI)



**R99
Chaos Signet**

Ring
Device of the infamous, maelstromic arrows; black enamel. (Sizes: Q, T, W, Y)



**R176
Hell's Doorman**

Ring
Ram-horned guardian of the gates of the abyss. (Sizes: Q, T, W, Y, ZI)



**R122
Omega Skull**

Ring
The Alchemist engraved with his total, all-powerful esoteric knowledge. (Sizes: N, Q, T, W, Y)



**R50
Celtic Theurgy**

Ring
Supernatural powers of the pentagram under Celtic influence. (Sizes: N, Q, T, W)



**R16
Demi Alchemist**

Ring
Classic portrayal of the Alchemist, with black rose. (Sizes: N, Q, T, W)



**R195
Viking Virility Runerung**

Ring
The two bindrunes are made from Uruz and Teiwaz, for the fighting strength of a warrior; and Inguz and Gebo for a virile union and partnership. (Sizes: Q, T, W, Y, ZI)



**R174
Ruination Skull**

Ring
Defiance on the face of death. (Sizes: Q, T, W, Y, ZI)



Buckles

Alchemy buckles are all cast in solid English pewter, and are designed to be snapped onto standard 1½" (38mm) belt straps.

Visit our website www.alchemyengland.com for additional views of all Buckles.

For more information behind Alchemy's arcana of subjects, relating to products, symbols, designs and very much more, see "Further Information" on page 3.

B101 Viper's Nest

Buckle
Evolutionary 'victor ludorum' - ultimate survivors and winners.

N



B66 Gramilion

Buckle



B100 Rabeschadel

Buckle



The great black bird is famous for its prophetic powers, being Odin's messengers and capable of foretelling death.

Contesting, Draconic beasts refute ultimate possession of the black Stone of Wisdom.‡

B69 Omega Skull

Buckle



The enigmatic and infamous Alchemist, engraved with the wisdom of ancients.

B99 Warband

Buckle



The rune-cut battle shield and trusted sword of a Viking leader.

B93 Nevermore

Buckle



A study in destinal mortal reflection and a solemn reminder of life's hopeless ephemerality.

B96 Thunderhammer

Buckle

The Norse god Thor's mighty weapon of utter destruction, Mjolnir.

L1B Leather Belt Strap

Belt Strap

High quality, 1½" (38mm) wide, black split leather belt straps with press-stud fastenings to accept any jeans-belt buckles: in a choice of three waist sizes; S (28" - 34"), M (34" - 40"), L (40" - 44").





1
B13
The Alchemist Rex



2
B75
Letter Of Marque



6
B74
Wulven



9
B85
Anima Machinato Futuris

Model is wearing -
R188 Britannia Gem Ring
B88 No Evil Buckle
P501 Chaosium Pendant
Model : Dark Wolf
<https://www.facebook.com/Dark.Wolf.Model/>
Photo : Anthony Mes - Photographie
<https://www.facebook.com/anthonymesphotographie/>

1 B13
The Alchemist Rex

Buckle
The dominant king Alchemist skull; highly polished cranium and solid rose.

2 B75
Letter Of Marque

Buckle
An official, Royal warrant to 'privateers'; an 18th century license to kill!

3 B95
Ram's Skull

Buckle
Sacrifice for a pagan.

4 B8
The Alchemist

Buckle
The original Philosophus Magus portrait; set with a black rose.

5 ULB7
Russian Roulette

Buckle
Are you man enough to play the deadly game? Let fate make your difficult choices for you, with the aid of this one-bullet, revolving gun chamber.

6 B74
Wulven

Buckle
'Of the Wolf' ... the children of the night. With translucent midnight-blue enamel.

7 B83
The Vulture's Eye

Buckle
Edgar Allan Poe's 'pale blue vulture-like eye' in "The Tell-Tale Heart": with black onyx and enamel eye.

8 B24
Nosferatu's Hand

Buckle
The withered, yet living hand of the infamous undead, insensitively embraces the strap; in dark pewter with polished highlights and red Swarovski cabochon ring. † ♡

9 B85
Anima Machinato Futurus

Buckle
Latin, meaning 'mechanised life to come'; the future of the human race. Pewter cross-section of a human skull, showing brass and copper internal components. in traditional style.

10 ULB3
Tattoo Gun

Buckle
Authentic, almost life-size, totally 3D engineered & sculpted tattoo gun buckle; with engraved copper-plate scroll and brass rod components. The reverse has been 'tattooed'.

11 B88
No Evil

Buckle
Just do it - life and death; hear, speak and see NO EVIL!



3
B95
Ram's Skull



4
B8
The Alchemist



5
ULB7
Russian Roulette



7
B83
The Vulture's Eye



8
B24
Nosferatu's Hand



10
ULB3
Tattoo Gun



11
B88
No Evil

Armwear

Alchemy's Armwear items are all hand cast in Fine English Pewter, many with additional high quality crystals, Swarovski Elements and other components.


Visit our website www.alchemyengland.com for additional views of all Armwear.

Sizes:

Bracelets are mostly 'One Size, adjustable', covering from Small to Large. However, where fixed sizes are indicated, these are divided into three approximate categories:

SMALL: approx. 6"-7½" (153-191mm) circumference;
 MED: approx. 7"-9" (178-229mm) circumference;
 LARGE: approx. 7½"-9½" (191-242mm) circumference.

When supplemented with 'Adj.', a bangle has some degree of adjustment, usually achieved by gently squeezing open or closed to fit.

 For more information behind Alchemy's arcana of subjects, relating to products, symbols, designs and very much more, see "Further Information" on page 3.



1
A112
Tightlace Corset
Bangle



2
A104
The Dogaressa's
Last Love



3
A113
The St Petersburg Tear



4
A78
Elizabethan



5
A69
La Fleur de
Baudelaire



6
A116
Rose Of Perfection



7
A97
Pirate Princess

**1 A112
Tightlace Corset Bangle**

Bracelet
 Provocative Victorian waist cinching applied now to the sensual wrist; with black elastic, black satin ribbon & Swarovski crystal-set heart slide fastener.

One size Adj. ‡ ♦

**2 A104
The Dogaressa's
Last Love**

Bracelet
 From the rich regalia of office, a last token of forlorn devotion from the bereaved Lady of the Palace in Renaissance Venice. With large Swarovski oval and suspended blue heart crystals.

See matching choker & ring pages 11 & 40. One size Adj. * ‡ ♦

**3 A113
The St Petersburg Tear**

Bracelet
 A gem, cut from a heart turned to ice, from the royal mistress to the Emperor of Russia.

One size Adj. Adjusted by pewter bead slider. N ‡ ♦

**4 A78
Elizabethan**

Bangle
 Robert Dudley's original design for the tracery molding above the North entrance to Kenilworth Castle for his great love, alas, never used; with Swarovski crystal hearts.

Also in the Elizabethan range - choker & necklace, page 11; alternative earstuds, pages 32 & 37; ring, page 40. One size Adj. * ‡ ♦

**5 A69
La Fleur de Baudelaire**

Bangle
 Paris' celebrated C.19th 'gothic' poet and visionary and champion of the supernaturally creative powers of absinthe; with Swarovski crystal.

With matching choker P517 on page 18. One size Adj. * ‡ ♦

**6 A116
Rose Of Perfection**

Wrist Strap
 An esoteric symbol of divine perfection. Leather strap with adjustable fastenings & Swarovski crystals.

One size Adj. N ‡ ♦

**7 A97
Pirate Princess**

Wrist Strap
 A sexy and feisty flourish from the age of daring grandiloquence. Leather strap with adjustable fastenings & Swarovski crystals.

One size Adj. ‡ ♦

* **CAUTION:** Repeated over-bending of bangles will cause metal to fracture.

♦ Made with - SWAROVSKI ELEMENTS

Model is wearing :
 A113 The St Petersburg Tear Bracelet
 P764 The St Petersburg Tear Necklace

Elisanth - www.elisanth.com : Model
 Zatsepin Alex - www.zatsepin-alex.com : Photo
 Samhain - www.samhaincontactlenses.com : Lenses



1
A101
Flocking Ravens



2
A110
Black Swan



3
A96
Skull & Briar Rose



4
A89
Betrothal



5
A108
Viennese Nights



6
A80
Passion



7
A106
Bacchanal Rose



8
A68
Curse Of Ezekiel



9
A88
Vis Viva

claddagh by night

A114 ▶
Claddagh By Night

Bangle
Love, Friendship and Loyalty vouchsafed from the underworld, in the ancient Irish tradition. The original symbol was first produced as a ring, in the west coast village of Claddagh in the 17th century. **N** ‡ †
One size Adj. *



R210
Ring

Claddagh By Night

Illustrated here, the BRAND NEW, complete Alchemy Claddagh By Night collection, that includes the Bangle, the Ring, the Choker and the Ear Studs. All in fine English pewter and adorned with Swarovski's heart crystal.



P781
Choker



E379
Ear Studs

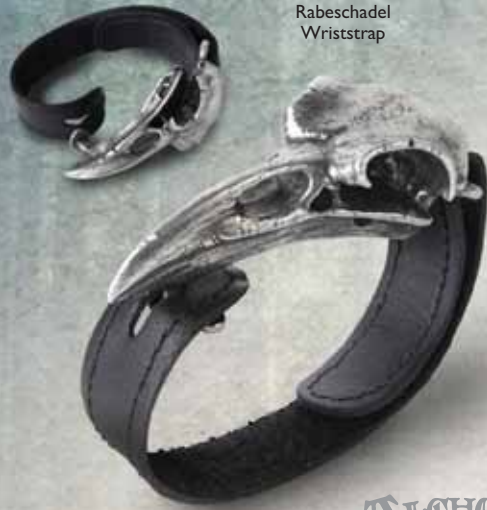


- 1 **A101**
Flocking Ravens
Bracelet
A cirlet of ravens performs its calling, protects you and takes you to magical places; with Swarovski crystals.
Companion necklace P677, page 14. One size Adj. ‡ †
- 2 **A110**
Black Swan
Wriststrap
Hidden in the fractal depths of the Swarovski, black diamond crystal, lies the message of love between two beautiful and perfect deviants.
One size Adj. ‡ †
- 3 **A96**
Skull & Briar Rose
Bracelet
A beautiful romance, turned to death and ashes. Pewter & black resin with double ribbon fitting.
One size Adj.
Adjusted by skull bead slider.
- 4 **A89**
Betrothal
Hinged Bracelet
A rococo masterpiece of romantic metaphor, with the blood red enameled heart of passion; Swarovski crystal.
For matching ring, see R134, page 40. One size Adj. ‡ †
- 5 **A108**
Viennese Nights
Bracelet
The quintessential creature of the night, fashioned in opulent Renaissance scrollwork defining the decadent streets of Europe's fabulous den of iniquity.
See matching necklace on page 9. One size Adj. Adjusted by heart bead slider. ‡ †
- 6 **A80**
Passion
Bangle
A tangled cuff of bloody thorns, encrusted with Swarovski crystal drops; complementing the equally empathetic P530 necklace (page 14), E287 earwrap (page 35) & R167 ring (page 42).
One size Adj. * ‡ †
- 7 **A106**
Bacchanal Rose
Bracelet
A sumptuous bracelet with a romantic motif hiding, or revealing, a secret libertine passion for wine and sensual pleasures; black roses for dark love and grape vines for vinous delights. Featuring black acrylic roses, Swarovski crystals & black ribbon.
Matching necklace page 17 & earrings, page 33. One Size Adj. Adjusted by heart bead slider. ‡ †
- 8 **A68**
Curse Of Ezekiel
Hinged Bracelet
The Old Testament's prophet of horror, with his foretold rising of bones, coming to grisly fruition and taking a firm grip on the wearer, gripped by spring-action thumb joint.
One size Adj. Shown on wrist.
- 9 **A88**
Vis Viva
Hinged Bracelet
The living power; overwhelming energy and the force of life encircles and liberates the wearer; with Swarovski crystals.
Matching ring R183 (page 42). Shown with reverse view showing adjustable sprung fitting.
One size Adj. ‡ †

* **CAUTION:** Repeated over-bending of bangles will cause metal to fracture.



1
ULA1
Ace Of Dead
Spades



2
A105
Rabeschadel
Wriststrap



3
A115
Cthulhu Rising



5
A109
Black Consort



7
A102
Gears Of Aiwass



8
A37
Pentagram Gaelic Strap



10
ULA7
Carpe Diem



11
A111
Desmodus



13
A85
Pentagrations



14
A98
Thunderhammer



4
A93
Killing Fields



6
A29
Vertebrae



9
A107
Thunder Torque



12
A15
Spectrostatic
Nocturnium



16
A100
The Black Baron
Technician's Wingstrap



15
A103
No Mans Land

1 ULA1
Ace Of Dead Spades

Wriststrap
Italian leather wriststrap with pewter & black-enamelled ace of spades plate, including raised, sculpted death's head. On adjustable leather strap.

2 A105
Rabeschadel Wriststrap

Wriststrap
The great black bird is famous for it's prophetic powers, being Odin's messengers and capable of foretelling death. On adjustable leather strap.

3 A115
Cthulhu Rising

Wriststrap
The giant god Cthulhu returns from the dead. **N**

4 A93
Killing Fields

Wrist Chain
Assembled from the sobering detritus of all-out war. Sizes: Small & Large.

5 A109
Black Consort

Wriststrap
The majestic raven, wings outstretched, gliding alongside its adopted squire offering protection and guidance. On adjustable leather strap.

6 A29
Vertebrae

Hinged Bangle
The metallised spine of a vanquished predator, forms this hinged, articulated bangle; with safety chain. Size: Medium Adj.

7 A102
Gears of Aiwass

Wriststrap
Aleister Crowley's incorporeal intelligence and dictator of his transcribed and ultra-complex, sacred text, 'The Book of the Law'. On adjustable leather strap.

8 A37
Pentagram Gaelic Strap

Wriststrap
Hand plaited, black leather wristband with pewter pentagram button-fastening. On adjustable leather strap.

9 A107
Thunder Torque

Bangle
This lordly, iconic torque bangle must be that of a Scandinavian or Saxon pagan noble, won, almost inevitably, by force. Copper-plated finial ends with inset hematine cabochons. Sizes: Small & Large. † *

10 ULA7
Carpe Diem

Wriststrap
Classic tattoo skull, dagger, roses & scroll wriststrap, bearing the eternal Latin legend "Carpe Diem" - "Seize The Day". One size Adj.

11 A111
Desmodus

Wriststrap
The metaphor to capture that dark and dangerous creature that stalks the night. One size Adj.

12 A15
Spectrostatic Nocturnium

Bangle
Early scientific instrumental band for controlling moonlight wavelength emulations; in antiqued pewter and solid brass. Shown with side view highlighting Finial Detail. Size: Medium Adj. *

13 A85
Pentagrator

Wriststrap
Magically intoned icon of power. On adjustable leather strap.

14 A98
Thunderhammer

Wriststrap
The Norse god Thor's mighty weapon of utter destruction, Mjolnir. On adjustable leather strap.

15 A103
No Man's Land

Hinged Bracelet
Emerging from the bottomless mud and gore of the fields of Passchendaele, the ruins of humanity and war blossom. Sizes: Small & Large

16 A100
The Black Baron Technician's Wingstrap

Wriststrap
A rare and wondrous legacy from the famed hero of early, roaring skies; 2-tone pewter on dark brown, leather strap. One size Adj.



* CAUTION: Repeated over-bending of bangles will cause metal to fracture.



**1 AW23
 Telford
 Chronocogulator
 Timepiece**

Wristwatch

An antiqued pewter 'Cast-Iron' framework and gearwheels on a robust, high quality, Italian brown leather strap, mounts the essential, modern antiquarian's, sepia cog-faced time piece; with Swarovski crystals. With 35mm dia. quartz movement. ‡ ♡

Shown with packaging that all Alchemy timepieces are sold with.

**2 AW27
 Thorgud Ulvhammer**

Wristwatch

Wolves' heads adorn the richly decorated Viking Thor's Hammers carved with Nordic knotwork and the head of the thunder god.

**3 AWC2
 Magistus'
 Double-Albert
 Fob Chain**

Fob Chain

An elegant 24" rope chain with central T-bar and double-sided fob and an Albert swivel at either end for the well-accoatered gentleman.

Shown with reverse view of casting.

**4 AW18
 EER Patent
 Solar-Powered
 Turbine Fob Watch**

Fob Watch

The second and even more technologically advanced timepiece from Rosenstein. Its brass turbine blades (themselves incorporating solar sensors), rotating to generate the transformed power-(the turbo may also be hand-cranked).

With 35mm dia. quartz movement and magnetic-fastening hatch.

**5 AW17
 The Nevermore
 Fob Watch**

Fob Watch

Edgar Allan Poe's epitome incorporating cryptic 'POE' monogram and engraved with extracts from 'The Raven'.

With 35mm dia. quartz movement watchface.

**6 AW15
 EER Steam-Powered
 Entropy Calibrator**

Wristwatch

Measuring the decay of time using Carnot's second law of thermo dynamics. With 35mm dia. quartz movement and unique 'Galvanic Scale' watch face and magnetic-fastening hatch. One size adjustable.

Shown with open hatch, revealing the gauge watch face.

Model is wearing -
 P774 Jormungand Neck Thong
 A107 Thunder Torque Bangle
 R171 Thor's Runehammer Ring
 AW27 Thorgud Ulvhammer Wristwatch

Model : **Dark Wolf**

<https://www.facebook.com/Dark.Wolf.Model/>

Photo : **Anthony Mes - Photographie**

<https://www.facebook.com/anthonymesphotographie/>



1
AW23
Telford
Chronocogulator
Timepiece



2
AW27
Thorgud
Ulvhammer



3
AWC2
Magistus'
Double-Albert
Fob Chain



4
AW18
EER Patent
Solar-Powered
Turbine Fob Watch



5
AW17
The Nevermore
Fob Watch




6
AW15
EER Steam-Powered
Entropy Calibrator

Timepieces


Wristwatches and bracelet, pendant and fob watches are all inset with an imported, quality quartz crystal movement. Several of the watches are enhanced with Swarovski crystal, trans-enamel or two-tone finishes. Watches come complete in either a black flock presentation pouch or an attractive black gift box, all gold-blocked with the Alchemy logo.

Visit our website www.alchemyengland.com for additional views of all Timepieces

 For more information behind Alchemy's arcana of subjects, relating to products, symbols, designs and very much more, see "Further Information" on Page 3.




AW26 Temp De Sentiment

Pendant / Fob Watch
The key to happiness and contentment is so often found in the memories of past loves and times gone by...
With 24mm dia. quartz movement, on 35" chain. ‡ 



AW28 Dark Angel

Wristwatch
Divine personal protection, watching over every minute of your earthly time. 

Shown with packaging that all Alchemy timepieces are sold with.

ALCHEMY
England • 1977



◀ **AW16**
Imperial Dragon

Wristwatch

With all the mystique of the orient and the elegance of a Victorian connoisseur collector; adjustable. With 24mm dia. quartz movement.

Shown with packaging.

AW10 ▶
Rose Garden

Wristwatch

A forgotten bed of black roses and Swarovski crystals; with stainless steel cobwebs and 24mm dia. quartz movement. ‡

◀ **AW20**
Artemesia
Bracelet Watch

Wristwatch

Alluring Fairie spirits of bitter Wormwood support the quartz watch face mount; with translucent 2-colour green enameled wings & adjustable chain fitting.

With 24mm dia. quartz movement.



AW22
Bed Of Blood Roses
Bracelet Watch

Wristwatch

Tangled emotions and romance; sparkling roses flourish within the heart's blood of this intoxicating watch. Swarovski crystals glitter from beneath the bright red enamel. With 24mm dia. quartz movement. ‡



AW24
Heartfelt

Strap Watch

Four beautiful Swarovski crystal hearts adorn this ravishingly ornate leather strap, for keeping time as well as looking gorgeous! With 24mm dia. quartz movement. ‡ One size Adj

Accessories



www.AlchemyEngland.com

▲
BE4
Alchemist Pen Top

Pen Top
 Classic Alchemist's skull, cast in English Pewter, securely fitted to the top of the latest, black Bic ball pen (non-toxic); pen included.

WS3 ▶
Beast's Claw

Walking Cane
 The ultimate gentleman's cane, displaying a heady embodiment of elegance, mysticism and ferocity. Feel the smooth crystal ball rotate in your hand, within the grasp of the hand-polished pewter claw.

WS6 ▼
Marquis de Lune

Walking Cane
 Ornate, cast pewter top, mounting a giant, 27mm, sparkling, multi-faceted Austrian Swarovski crystal, as befitting the noble nocturne. ‡ ♦

All Walking Canes are 21mm dia.
 X 908mm length approx.



Model is wearing -
 P736 Rabeschadel Pendant;
 R201 Rabeschadel Ring;
 A111 Desmodus Wriststrap;
 WS6 Marquis De Lune Walking Cane
 Model : Valentin Winter
<https://www.facebook.com/AngelVanPorcelain>
 Photo : Atelier Simone Richter
www.facebook.com/Atelier-Simone-Richter

Accessories are shown smaller than actual size.

‡ Specified crystal colours are subject to availability and may be substituted.



◀ **EP2
D'Duke's
Polarising Monocle**
Monocle

Believed to be the first optical device to successfully filter polarised light waves, (however, the striated glass element has, sadly, been lost); on approx. 20" long, fine black curb chain with T-bar.



▲ **GA1
Foundryman's Ring Cross
Shirt Sleeve Band**
Sleeve Band

Industrially influenced, Edwardian white-collar dress code, imbued with a strain of ancient Celtic faith. Shown approximately actual size.



▲ **GA2
Keys To Progress
Shirt Sleeve Band**
Sleeve Band

A masterly and stylish symbol of the times, and of the infinite possibilities for pioneers of the new age; 2-tone pewter with elasticated sleeve band.



**AMA5
Temeritas Wings**
Medal
Airman's award for abandoned recklessness.



**ABR1
Funereal Beard
& Hair Beads**
Beard / Hair beads (Set of 3)
Essential regalia for the well appointed mute and pagan mourner. Set of 3 includes Janus Skull, Coffin & Alchemist Skull.

LIGHTERS

'Stormproof' lighters with hinged lid. (Lighter shape is subject to change & may vary from ones illustrated). Lighter fluid required (not supplied).



AAZ3 Pentagram



AAZ27 Wyverex



ULAZ3 Tattoo Gun



AAZ10 Or Philosophy



AAZ29 Noctis Cross



**CL11
Miasmatic
Reactor Core**
Cuff Links
Atmospheric purifying and energy extraction device against the hazard of 'noxious air'. With green rod core.



**CL14
Uncle Albert's
Cuff Link**
Cuff Links
The perfect, miniature 13-hour Lunar-time, Victorian era fob watch. Matching items, pages 24, 38 & 40.



**CL10
Skull 'n' Bones
Stargazer Cufflinks**
Cuff Links
Pair of piratical death's heads. With Swarovski black diamond crystal eyes. †



**S1
Skull Buttons**
Pewter Buttons
Pewter replacement shirt buttons in packs of 6. Sewn-on with black thread through a pair of subtly placed thread-holes.

1
AAC58
Litternere
Jewellery Stand



2
HG1B / HG1S
Skully Hair Grip
Black / Silver



3
HH10
Black Raven
Hair Slide



5
HH8
Serpent's Eye



6
HS4
Roseus
Pentagram



4
AAC47
Mortalitas
Pill Box



Shades of
ALCHEMY



Specially Selected
Gifts

7
HH9
Get A Grip



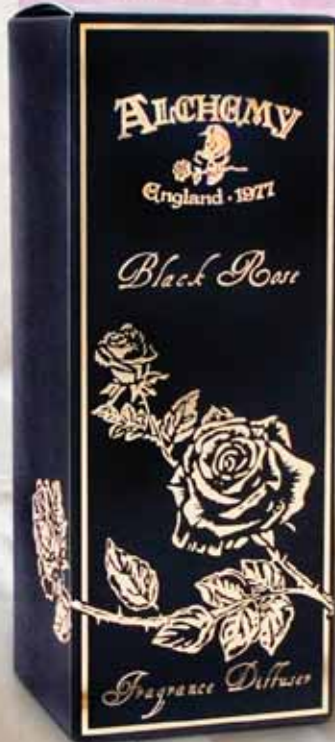
8
HH1
Darkling Bat
Slide



9
HC3
Claddagh
Hair Comb



10
ADI
Black Rose
Fragrance
Diffuser



11
ROSE1
Black Rose



Accessories are shown smaller than actual size.

‡ Specified crystal colours are subject to availability and may be substituted.

Accessories

The Elegant Way To Display Your Nocturnal Tendencies.

Visit our website www.alchemyengland.com for additional views of all Accessories.



For more information behind Alchemy's arcana of subjects, relating to products, symbols, designs and very much more, see "Further Information" on page 3.



12
DP3
Bat
Dress Pins

13
DPI
Memling Skull
Dress Pins



14
AKP4
Not Dead Pin



15
AKPI
Pin Head



16
AKP3
Artificer's
Utility Pin



17
AKP2
Away From
The Roost

1 AAC58
Litternere Jewellery Stand

Jewellery Stand
An unquestioning servant arisen from its stifling grave in devoted supplication to its pampered mistress's assistance.

A dramatically different and substantial jewellery stand, poised to be casually draped with all the rings and necklaces of any special, haunting value.

2 HG1B / HG1S
Skully Hair Grip Black/Silver

Hair Grip (Single)
The boneheaded, hollow-eyed simpleton stares into the face of convention and confounds any curious onlooker. Available in black or silver; supplied singly.

3 HH10
Black Raven Hair Slide

Hair Slide
The Raven - the modern vampire and 20th century symbol of the undead; in blackened pewter. Companion pendant, page 22 & earrings, page 32.

4 AAC47
Mortalitas Pill Box

Pill Box
A miniature bedside skull to keep safe and remind you of your daily ration of essential medication; with brass hinge and catch. Shown approximately actual size.

5 HH8
Serpent's Eye

Hair Slide
Twin Celtic serpents infused with sacred healing powers encircle the sanguine red abalone snake-eye, to protect the wearer against the evil eye. Natural abalone stone in the centre, upon a sprung steel hair clip. ‡

6 HS4
Roseus Pentagram

Hair Stick
For Alchemical perfection.

7 HH9
Get A Grip

Hair Slide
A sinister looking, yet innately harmless main de l'os. On a sprung steel hair clip.

8 HH1
Darkling Bat Slide

Hair Slide
The classic vampiric bat swoops spreadeagled towards its prey.

9 HC3
Claddagh Hair Comb

Hair Comb
A gothic variant of the traditional, C17th, Galway symbol of eternal love, friendship and loyalty by virtue of its heart, hand and crown, but with bones for 'beyond the grave'.

10 AD1
Black Rose Fragrance Diffuser

Fragrance Diffuser
80ml fine French fragrance diffuser, with black reeds. **N**

11 ROSE1
Black Rose

Rose
Convincing, artificial symbol of perfection and tragic love.

12 DP3
Bat Dress Pins

Dress Pins (Pack of 3)
An understated reminder of the silent, prevailing powers of the night.

13 DP1
Memling Skull

Dress Pins (Pack of 3)
Understated, Hans Memling style skull, as if taken from his Vanitas Triptych.

14 AKP4
Not Dead Pin

Kilt Pin
1976 - the beginning of the Alternative Revolution for those that dared be different! **N**

15 AKP1
Pin-Head

Kilt Pin
A most freakish jewel, and a strong and distinctly different way to fasten your stuff, from a kilt or a coat to a kit bag or cloak.

16 AKP3
Artificer's Utility Pin

Kilt Pin
The essential instruments possessed by a sky-ship officer.

17 AKP2
Away From The Roost

Kilt Pin
A vanguard of silently flitting pipistrelli cavort in the sinister twilight. ‡



Pins are shown approximately actual size.

◆ Made with - SWAROVSKI ELEMENTS

Glassware

Elegant and dramatic, cast English Pewter sculpted goblets and wine glasses, some with Swarovski crystal adornments and a range of coloured and clear glass bowls.

Visit our website www.alchemyengland.com for additional views of all Glassware.

For more information behind Alchemy's arcana of subjects, relating to products, symbols, designs and very much more, see "Further Information" on Page 3.



1
ACWT4
La Fée Verte
Absinthe Spoon



4
ACWT3
La Fée Verte
Tumbler



2
CWT54
Wings Of Love
Champagne Glass



3
ACWT9
The Wormwood Tree
Absinthe Shot Glass



5
ACWT11
Le Vert de Minuit



6
ACWT2
La Fée Verte
Shot Glass





7
AAG51
Ruah Vered
Goblet



1 ACWT4
**La Fée Verte
Absinthe Spoon**
Absinthe Spoon
Traditional sugar cube strainer for watering down absinthe, in the form of an Art Nouveau fairy.

2 CWT54
**Wings Of Love
Champagne Glass †**
Champagne Glass
The most passionate way to toast your love, with multi-faceted Swarovski crystal hearts, flying high to meet their destiny. † ♦

3 ACWT9
**The Wormwood Tree
Absinthe Shot Glass †**
Shot Glass
The truly decadent way to enjoy, neat, the gratifyingly creative delights of the green fairy. Approx. 123mm high.

4 ACWT3
**La Fée Verte
Tumbler †**
Glass Tumbler
Traditional tall absinthe tumbler, in 'forest glass' with pewter Art Nouveau fairy base, for taking absinthe with water and sugar. Approx. 180mm high. Absinthe spoon shown, not included. *

5 ACWT11
Le Vert de Minuit †
Shot Glass
The midnight green; the hour of the revenants and the colour of elixir in hedonistic, 19th century Europe; 'A' is for absinthe! Approx. 65mm high. *

6 ACWT2
**La Fée Verte
Shot Glass †**
Shot Glass
'The Green Fairy' Art Nouveau style 'forest glass' shot glass. Approx. 65mm high. *

7 AAG51
Ruah Vered Goblet
Stainless Steel Goblet
The spirit and the 'Breath of Life' combined with the sensual rose of love, toasting health, harmony and passion.
Also shown with P715 pendant (see page 13).

8 CWT43
Dracula's Cup †
Wine Glass
For the dangerously intimate encounter; blood red Swarovski crystals drip from the thorns of peril and passion. † ♦

* This glass item is traditionally hand-blown. Minor flaws and imperfections are a feature which naturally enhance the beauty of the glass.



8
CWT43
Dracula's Cup

† All Alchemy glassware is subject to our repair service. See note on Page 3.



Model is wearing -
E272 Bleeding Heart Earrings
P456 Renaissance Cross Of Passion Pendant
Model is holding -
CWT43 Dracula's Cup Wine Glass

Model : La Esmeralda
www.facebook.com/Alternative.Model.La.Esmeralda
Photo : Silver Pearl Photography

DRINKING VESSELS

- Traditional, glass beer glasses for ale and lager, but with the unique addition of Alchemy's cast pewter badges and labels.
- Luxury shot glasses of vintage style, ennobled with elaborate English Pewter sculpted detail and bases.
- Pewter tankards and flasks hand-made the traditional way by our partners in Sheffield, using a heavier 0.26 gauge pewter, and with castings made at our workshops in Leicester.

Visit our website
www.alchemyengland.com
 for additional views of
 all Drinking Vessels.

For more information behind
 Alchemy's arcana of subjects,
 relating to products, symbols,
 designs and very much more,
 see "Further Information"
 on Page 3.

ALCHEMY
 England • 1971

AAT25 ▶ Viking Horn

Pewter Tankard
 Robust 1 pint (600ml) tankard with
 simulated horn 'fertility' handle in
 traditional Viking style and carved
 pewter mounts.

AAT10 ▼ Silver Dragon

Pewter Tankard
 This breathtaking sculpted dragon in full
 flight, forms the handle of this stylish 1
 pint capacity (600ml) tankard.



1
 CWT56
 Single
 Shot



2
 CWT51
 Aqua Vitae



3
 CWT48
 XXX
 Black Rose
 Ale Glass



4
 CWT58
 Villa Diodati
 Continental
 Beer Glass

Drinking Vessels are illustrated smaller than actual size.



ALCHEMY COFFEE MUGS
4 NEW DESIGNS!
• Etched design on both sides.
• Safe for normal dishwasher use.
• Microwave safe.

5
AAF53
Alchemist
Potion
Bottle



6
CWT47
The Alchemist
Shot Glass



7
CWT55
Ruah Vered



8
CWT26
Dragon's Claw
Shot Glass



9
ALMUG2
Alchemist Mug



10
ALMUG5
Favourite
Colours Mug



11
ALMUG4
Death Before
Decaf Mug



12
ALMUG3
Black Coffee,
Black Rose Mug

**1 CWT56
Single Shot †**

Shot Glass
You might need a stiff drink, when you know it could be your last!

**2 CWT51
Aqua Vitae**

Beer Glass
Double-headed dragon beer, 'aqua vitae' is Latin for 'water of vitality', which must mean lager!
Glass approx. 180mm high.
Approx. half pint capacity (300ml).

**3 CWT48
XXX Black
Rose Ale Glass †**

Ale Glass
An imperial pint, straight glass, badged in glorious dignity with a cast pewter skull 'n' bones label, befitting all serious ale-aficionados.
Approx. 150mm high.

**4 CWT58
Villa Diodati
Continental Beer Glass**

Beer Glass
Drink to the memory of Byron, Polidori and Shelley, and the birth of their Frankenstein and Dracula.
Glass approx. 180mm high.
Approx. half pint capacity (300ml). **N**

**5 AAF53
Alchemist Potion Bottle**

Pewter Flask
Based on a typical Victorian chemist's bottle, this ornate pewter flask is both a temptation and a warning to those that use it! A 2½ fl.oz. flask embossed with 'ELIXIR-POTION-POISON' and a red enameled coffin & crossbones, and features a fully 3D-modelled Death's Head screw cap with 'DRINK ME' inscribed on the reverse.

**6 CWT47
The Alchemist †**

Shot Glass
Drink a health to yourself with the wisest of them all - Death and the Black Rose.

**7 CWT55
Ruah Vered**

Shot Glass
The spirit and the 'Breath of Life', entwined with the romantic and sensual rose of faithful love. A more beneficial and noble toast could not be raised!

**8 CWT26
Dragon's Claw †**

Shot Glass
Dragon motifs decorate the fleury cross base of this hard liquor glass. Shown with pierced base which is visible through top of glass.

NEW! ALCHEMY COFFEE MUGS

Double sided ceramic mugs in 4 NEW designs.

**9 ALMUG2
Alchemist Mug**

Ceramic Mug **N**

**10 ALMUG5
Favourite Colours Mug**

Ceramic Mug **N**

**11 ALMUG4
Death Before Decaf Mug**

Ceramic Mug **N**

**12 ALMUG3
Black Coffee, Black Rose Mug**

Ceramic Mug **N**


† All Alchemy glassware is subject to our repair service. See note on Page 3.

The Vault™

by Alchemy

Original and official:
Quality resin giftware, designed by
Alchemy Studios, England.

Visit our website www.alchemyengland.com
for additional views of all Vault items

 For more information behind Alchemy's arcana of subjects, relating to products, symbols, designs and very much more, see "Further Information" on page 3.



1
V29
Thors Hammer
Wall Mount



3
V35
Count Magistus
Money Box

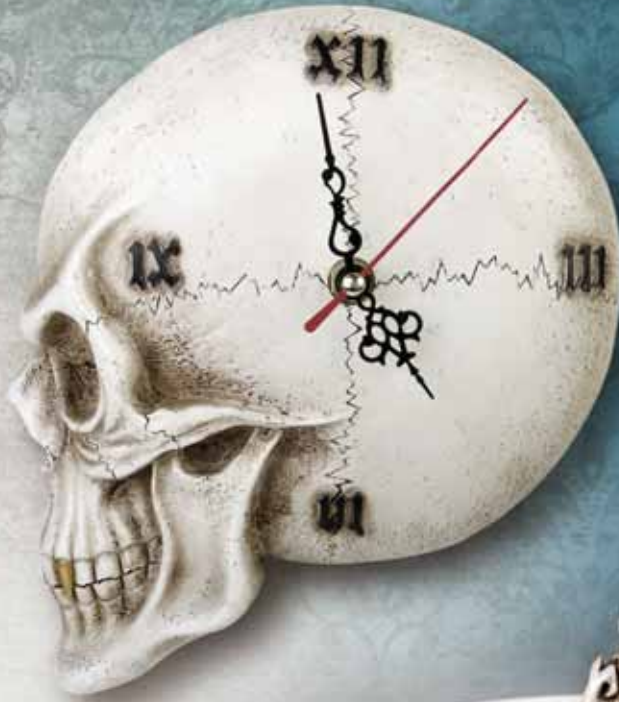


4
V28
Raven's Ward
T - Light Holder



7
V33
Rose Of Otrolanus
T - Light Holder

2
V32
Tempore Mortis
Skull Wall Clock



1 V29
Thors Hammer Wall Mount
Resin Wall Mount
Thor's mighty hammer Mjölfnir commanding the primal energy of the storm.
Approx. height 21cm. **N**

2 V32
Tempore Mortis Skull Wall Clock
Resin Wall Clock
The ever watchful chronicler of your remaining hours. Requires 1 x 1.5v AA battery (not included).
Approx. height 21cm. **N**

3 V35
Count Magistus Money Box
Resin Money Box
Place your trust in a gentleman who's reputation is beyond reproach (and beyond the grave).
Approx. height 14.5cm. **N**

4 V28
Raven's Ward T - Light Holder
Resin T-light Holder
The harbinger of the old gods, illuminating the dark night of the soul. (Candle not included)
Approx. height 11cm. **N**

5 V37
Geistalon Unicorn Skull
Resin Unicorn Skull
The thundering phantom of a legendary armored stallion. With magnetic, removable horn.
Approx. height (with horn removed) 15cm. **N**

6 V31
Dragon Wand
Resin Wand
Carved from the fire bone of Jörmungandr, last of the Draco Mundi.
Shown with magical pentagram seal on reverse.
Approx. height 24cm. **N**

7 V33
Rose Of Otrolanus T - Light Holder
Resin T-light Holder
The ethereal light of the fifth element ensnared by the midnight rose. (Candle not included).
Approx. diameter 12.5cm. **N**

8 V36
Black Rose T - Light Holder
Resin T-light Holder
The alchemical mystery personified by a point of light in the bloom of eternal night. (Candle not included).
Approx. diameter 8.5cm. **N**



All Vault items are featured smaller than actual size.



5
V37
Geistalon
Unicorn Skull

6
V31
Dragon Wand



8
V36
Black Rose
T - Light Holder



Compact & Hand Mirrors



1
V38
Gothic Heart



2
V39
Ghost Of Narcissus



3
V27
Nevermore



4
V34
Gothic Ankh



5
V9
Fate Of Narcissus



6
V20
Lady Talbot's
Retrospector
Hand Mirror



7
V10
Black Angel



The Vault™

by Alchemy



8
V22
Artemisia
Absinthium



- 1 V38
Gothic Heart
Resin Compact Mirror
An exquisitely carved window reflecting the beauty and barbarity of a lost golden age of mediaeval chivalry.
Approx. height 8cm. **N**
- 2 V39
Ghost Of Narcissus
Resin Compact Mirror
Glimpse the culmination of your mortal vanity, as you muse upon the futility of worldly endeavours with this secret memento mori.
Approx. height 8cm. **N**

- 3 V27
Nevermore
Resin Compact Mirror
Gaze upon your mortal reflection under the scrutiny of Poe's mocking Raven.
Approx. width 9cm.

- 4 V34
Gothic Ankh
Resin Hand Mirror
Sacred relic of Aset, beloved goddess of all vampires.
Approx. height 21.5cm. **N**

- 5 V9
Fate Of Narcissus
Resin Hand Mirror
Stare long enough into the argent pool and one inescapable destiny shall befall all, be they God or mortal.
Approx. height 18cm.

- 6 V20
Lady Talbot's Retrospector Hand Mirror
Resin Hand Mirror
Constance Talbot's revolutionary spectronic affinity glass allows the subject to glimpse a semblance of their past or future countenance through her patent 'Steam lens'. (Featuring a small magnifying lens).
Approx. height 23cm.

- 7 V10
Black Angel
Resin Hand Mirror
One of the most alluring of the high order of angels, invoked by the Sigillum Aemeth, Dr. John Dee's scrying stone. Approx. height 23cm.

- 8 V22
Artemisia Absinthium
Resin Wall Clock
Beguiled by the mortiferous fey spirit of bohemian Montmartre, this verdant time-piece inspires and chronicles acts of true genius and oblivion. Requires 1 x 1.5v AA battery (not included).
Approx. height 25cm.

- 9 V21
Spring Heeled Jill
Resin Jewellery Organiser
Extraordinary motoric assistentia shoe of the female rejoinder to the revered gaslight fiend of old London town. Approx length, 28cm. (Jewellery shown not included).

- 10 V26
Time Chronambulator
Resin Clock
The beating heart of the pan-dimensional adventurer's clockwork time machine. Requires 1 x 1.5v AA battery (not included). Approx. height 12cm.

- 11 V15
The Stormgrave Chronometer
Resin Timepiece
Professor Stormgrave's patent celestial chronometer, mapping the forces that govern the passing of eternity.
Requires 1 x 1.5v AA battery (not included). Approx. height 20cm.

9
V21
Spring Heeled Jill



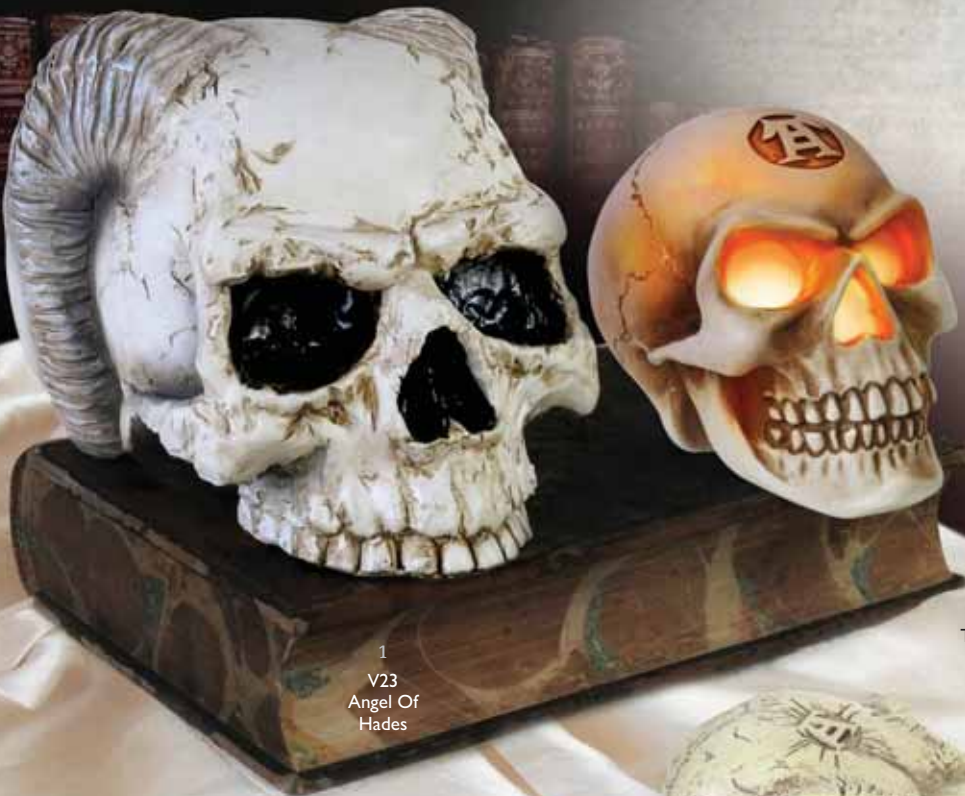
ALCHEMY
England · 1971

10
V26
Time Chronambulator



11
V15
The Stormgrave
Chronometer





1
V23
Angel Of
Hades

2
V42
The Inner Light



3
V16
Corvus
Alchemica



7
VI
Omega Skull



8
V41
Metalised
Alchemist Skull

The Vault™

by Alchemy



4
V17
Poe's Raven



5
V40
Alchemist
Gear Knob



6
V3
Metalised
Alchemist
Gear Knob



9
V4
Erasmus Darwin's
Steam-Cerebrum

10
V2
Lapillus Worry
Skull

- 1 **V23**
Angel of Hades
Resin Skull
Even in the deepest, darkest circles of hell redemption may rise on secret wings.
Approx. height 13cm.
- 2 **V42**
The Inner Light
Alchemist Skull
Resin L.E.D. Skull
Bask in the incandescent wisdom of the immortal philosopher.
Battery included.
Approx. height 9cm. **N**
- 3 **V16**
Corvus Alchemica
Resin Bird Skull
A larger than life mythic raven skull, personifying the ancient god of prophecy, ill-omen and lost souls.
Approx. length 21.5cm.
- 4 **V17**
Poe's Raven
Resin Bird & Skull
Inspiring Edgar Allan Poe, Master of the Macabre to give poetic voice to the Raven, "NEVERMORE".
Approx. height 18.5cm.
- 5 **V40**
Alchemist Gear Knob
Resin Gear Knob
Bone resin version of the classic Alchemist Gear Knob.
Approx. height 4.5cm. **N**
- 6 **V3**
Metalised Alchemist Gear Knob
Resin Gear Knob
The original Philosophus Magus, guiding the traveller to the path of enlightenment. (Bored and fitted with a rubber grommet for self-tap screwing onto gear sticks).
Approx. height 4.5cm.
- 7 **V1**
Omega Skull
Resin Skull
Life-sized Alchemist's skull, in aged bone-resin, carved over its entire surface with all the symbolic wisdom of 7000 years of history. With the traditional golden tooth.
Approx. height, 13.5cm
- 8 **V41**
Metalised Alchemist Skull
Resin Skull
A life-sized Alchemist's skull, immortalised in the mercurial lustre of the secret arts. With the traditional golden tooth.
Approx. height, 13.5cm. **N**
- 9 **V4**
Erasmus Darwin's Steam-Cerebrum
Resin Skull
The last and greatest creation to be attributed to the Bedlam Institute of Galvanic Studies.
Approx. height 16cm.
- 10 **V2**
Lapillus Worry Skull
Resin Skull
A diminutive yet uncanny skull to comfort and guide a troubled soul.
Approx. height 1.5cm.



All Vault items are featured smaller than actual size.

The Vault™

by Alchemy

ALCHEMY™
 England · 1971



1
 V18
 Oracle Of
 Narcissus



2
 V24
 Heart Of
 Otranto



3
 V25
 Heart Of
 Otranto



Wallets & Purses



4
LG67
Alchemist
Biker Wallet



5
LG57
Damned
Love Purse



6
LG46
Bat Purse



7
LG6
Coffin Purse



5
LG57
Damned Love Purse

Leather & Canvas Purse
For girls with a gothic heart.
Vintage-style black leather purse
with contrasting washed-black canvas
heart. With top zip-opening and
adjustable strap.
Approx. dimensions:
15cm (6") wide X 14.5cm (5¾") high
X 5.5cm (2¼") deep.

6
LG46
Bat Purse

Leather Purse
Sculpted leather bat-shaped purse,
with zip-top & curb chain strap.
Approx. dimensions:
19cm (7½") wide X 10cm (4")
high X 4cm (1½") deep.

7
LG6
Coffin Purse

Leather Purse
Soft black leather purse or cigarette
case, with zipped side opening, on
15" (44.5cm) curb chain.
Approx. dimensions:
16.5cm (6½") high X 10.5cm (4")
wide X 5cm (2") deep.

8
LG15
Coffin Wallet

Leather Wallet
In high quality leather, with large
bank-note section, several card
pockets and eyelet hole for
chain attachment.
Approx. dimensions:
17cm (6½") high X 11cm (4½") wide



8
LG15
Coffin Wallet

Opposite Page:

1 V18
Oracle Of Narcissus

Resin Table Mirror
Stare long enough into the argent
pool and one inescapable destiny
shall befall all, be they God or mortal.
Inscribed with the legend "Memento
Vivere, Memento Mori". Whilst you
are certain to die, remember that you
must first live. Approx. height 27cm.

Shown with complete Narcissus
Mirror range, V9 hand mirror & V39
compact mirror, page 68.

2 V24
Heart of Otranto

Resin Candle Stick
Bearing an eternally lit candle
at the highest window of
Castle Otranto. So as to guide home
the lost soul of a fair daughter.
(Candle not included) Approx. height
21.5cm.

3 V25
Heart of Otranto

Resin Chalice Bowl
Created for Manfred, Lord of Otranto,
at the zenith of medieval artistic
endeavour as both a wedding gift
and requiem for a lost love. Approx.
height 13.5cm.

This Page:

4 LG67
Alchemist Biker Wallet

Leather Wallet
A simple and practical, classic leather
biker wallet, but stamped with The
Alchemist's skull and black rose; on
14" steel chain with cast skull belt
loop.
Approx. dimensions:
9.2cm (3¾") high X 12.5cm (5") wide.

5 LG57
Damned Love Purse

Leather & Canvas Purse
For girls with a gothic heart.
Vintage-style black leather purse
with contrasting washed-black canvas
heart. With top zip-opening and
adjustable strap.
Approx. dimensions:
15cm (6") wide X 14.5cm (5¾") high
X 5.5cm (2¼") deep.

6 LG46
Bat Purse

Leather Purse
Sculpted leather bat-shaped purse,
with zip-top & curb chain strap.
Approx. dimensions:
19cm (7½") wide X 10cm (4")
high X 4cm (1½") deep.

7 LG6
Coffin Purse

Leather Purse
Soft black leather purse or cigarette
case, with zipped side opening, on
15" (44.5cm) curb chain.
Approx. dimensions:
16.5cm (6½") high X 10.5cm (4")
wide X 5cm (2") deep.

8 LG15
Coffin Wallet

Leather Wallet
In high quality leather, with large
bank-note section, several card
pockets and eyelet hole for
chain attachment.
Approx. dimensions:
17cm (6½") high X 11cm (4½") wide

Bags are shown smaller than
actual size.
BAGS NOT TO SCALE;
(check dimensions)

Bags


Alchemy's utterly unique collection of bags are individually hand-made by experienced craftsmen, in a specialist factory in southern Poland, from best quality, natural leathers and fabrics.

Leather is a natural product with unique characteristics and natural variations and marks. These are features, not faults, which reveal the individuality of each leather item. One of the distinctive and pleasing features of leather is that it assumes a character of its own with age.

Visit our website www.alchemyengland.com for additional views of all Bags.



To ensure you have an authentic Alchemy leather product, the handbags, purses & wallets featured here are branded with unique 'Alchemy Rose' logos. Be sure to check your product for authenticity.

 For more information behind Alchemy's arcana of subjects, relating to products, symbols, designs and very much more, see "Further Information" on page 3.

1

LG64
Wing-Commander's
Attaché Pouch



2

LG58
Eye Of Providence
Handbag



Elisanth - www.elisanth.com : Model
Zatsepin Alex - www.zatsepin-alex.com : Photo
Samhain - www.samhaincontactlenses.com : Lenses
The Gothic Shop - www.the-gothic-shop.co.uk : Jacket

Model is wearing:

P761 Pentagramatron Necklace
LG73 Magic Purse



3
LG72
RavenJäger

1 **LG64
Wing-Commander's
Attaché Pouch**

Leather & Canvas Bag
Designed for the reckless, duty-bound subaltern with adventure written in their genes. Essential communications are always assured with this vintaged canvas and leather pouch, with its front iPhone pocket, whether worn in belt-pouch, shoulder bag or backpack mode.

Approx. dimensions:
20.5cm (8") wide X 146.5cm (6½") high X 6cm (2½") deep.

2 **LG58
Eye Of Providence
Handbag**

Leather Bag
In the protection of the all-seeing eye of the gods! An eerily realistic enameled metal and hand crafted leather eye, unflinchingly peers from the front flap of this stylish shoulder bag. Hand made of vintage-style black leather with adjustable strap.

Approx. dimensions:
19.5cm (7¾") wide X 17.5cm (6¾") high X 7cm (2¾") deep.

3 **LG72
RavenJäger**

Canvas Bag
A classic huntsman's shoulder bag, in black, for the ghost of the raven, its spirit seen seeping from the fabric of the dark scrip.

Approx. dimensions:
25cm (9¾") wide X 25cm (9¾") high X 10cm (4") deep.

4 **LG71
Aetheric
Inclinometer Attaché**

Leather & Canvas Bag
Indispensable compass pouch for the seasoned cloud pilot. Vintage cotton canvas and leather purse, with front print 'Inclinometer' design, zipped top opening, adjustable, removable leather shoulder strap & pewter Alchemist stud.

Approx. dimensions:
15cm (5¾") dia. X 4.5cm (1¾") deep.

5 **LG73
Magic Purse**

Canvas Bag
A Cabalistic pentagram shrouds the ancient passage from the Holy Zohar, with a prophetic message on the interpretation of truth from dreams.

Approx. dimensions:
19cm (7½") dia. X 4.5cm (1¾") deep.

6 **LG61
Empire 'Captainette'
Purse**

Leather & Canvas Bag
High-flying adventurer's shoulder purse of 'vintage' cotton canvas and leather; with adjustable strap.

Approx. dimensions:
9cm (7½") wide X 14cm (5½") high X 6.5cm (2½") deep.

7 **LG60
Empire 'Aviator' Pouch**

Leather & Canvas Bag
Gentleman officer's pouch, (with detachable shoulder strap option), of 'vintage' cotton canvas and leather, with mobile phone and pen pockets.

Approx. dimensions:
12cm (4¾") wide X 20cm (8") high X 6.5cm (2½") deep.

8 **LG62
Empire 'Intrepid' Valise**

Leather & Canvas Bag
Heavy-duty, adventurer's shoulder bag, hand-made of 'vintage' cotton canvas and leather, with concealed zipped compartments and various pockets for mobile phones, pens, etc. The metal plaque, in Latin, reads; 'The fear of dying is worse than death itself'.

Approx. dimensions:
37cm (14¾") wide X 33.5cm (13") high X 11.5cm (4½") deep.



4
LG71
Aetheric Inclinometer
Attaché

5
LG73
Magic Purse



6
LG61
Empire 'Captainette' Purse



7
LG60
Empire 'Aviator' Pouch

ALCHEMY
England • 1971



8
LG62
Empire
'Intrepid' Valise



Bags are shown smaller than actual size.
BAGS NOT TO SCALE; (check dimensions)

T-shirts

Original Alchemy artwork printed onto high quality, black 100% cotton T-shirts.

Visit our website www.alchemyengland.com for additional views of all T-shirts.

For more information behind Alchemy's arcana of subjects, relating to products, symbols, designs and very much more, see "Further Information" on Page 3.

Available in sizes:
M (38"-40" chest size),
L (42"-44" chest size) &
XL (46"-48" chest size).

Branded with AlchemyEngland logo.



1
BT869
Ruah Vered



2
BT871
St. Levantius
Remains



3
BT846
Mjolnir



4
BT868
Scar Bones



5
BT734
Lightning Dragon



6
BT847
Corvinculus



7
BT810
Poe's Raven



- 1 **BT869**
Ruah Vered
T-shirt
The spirit and the 'Breath of Life', entwined with the romantic and sensual rose of faithful love. **N**
- 2 **BT871**
St. Levantius Remains
T-shirt
The shrouded countenance of Brother Mortimus. Last of the Holy Order of St. Levantius and deathless custodian of the Arcanum Noctis. **N**
- 3 **BT846**
Mjólnir
T-shirt
Thor the storm god's mighty weapon of elemental awe. Mjólnir in Old Norse means "That which marks and pulverises to dust". A amulet of ancient Nordic magic wrought by the dwarven brothers Sindri and Brokkr, endowing the wearer with strength and fortitude. The fear of Thor's hammer was all that held back the frost giants, fearsome foes of the gods of Asgard before the final apocalyptic battle of Ragnarok.
- 4 **BT868**
Scar Bones
T-shirt
The legendary ink-man from Louisiana takes his final bow: payback, with the mother of all irons made from trophies and relics taken from his former 'customers'. **N**
- 5 **BT734**
Lightning Dragon
T-shirt
High over the storm lashed crags of Midgard, rising from the dark of the moon, an ophidian colossus ascends to poison the skies. Svafnir the offspring of Jörmungandr, the world serpent of Norse legend has come to herald Ragnarök. Twisting and writhing in fury he prepares for a final clash with his bitter foe Thor, God of Thunder.
- 6 **BT847**
Corvinculus
T-shirt
Legendary messenger of the gods and arbiter of mortal fate, be it good or ill. A harbinger of doom and destruction on the battlefields of yore, and an ambassador between this world and the next. Speak not your words of betrayal and heresy in his earshot, lest the gods strike you down.
- 7 **BT810**
Poe's Raven
T-shirt
Edgar Allan Poe's seminal creation alights upon the skull of his poetic father. The master of the macabre whose short life echoes the cry of the raven 'Nevermore'.

Model is wearing -
BT868 Scar Bones T-Shirt
B88 No Evil Buckle
R171 Thor's Runehammer Ring
A98 Thunderhammer Wriststrap
 Model : **Dark Wolf**
<https://www.facebook.com/Dark.Wolf.Model/>
 Photo : **Anthony Mes - Photographie**
<https://www.facebook.com/anthonymesphotographie/>

ALCHEMY
 England · 1977

ALHS14



ALHS15



ALHS16



ALHS13

HANGING SIGNS

From the philosophical musings of the Alchemist himself and the artists of Alchemy Studios, come a collection of profound and essential dark pearls of wisdom; 90 x 65 mm mini, enamelled metal signs, pre-strung to hang anywhere.



ALHS17



ALHS18



ALHS19



ALHS20



ALHS12



ALHS11



ALHS10



ALHS9



ALHS8



ALHS7



ALHS6



ALHS5



ALHS4



ALHS3



ALHS2



ALHS1



CARD7 Alchemy Tarot
Tarot Card Set
Divine your spiritual path through the esoteric wisdom of the Tarot. A fully illuminated oracle of classic Alchemy imagery. Fournier Tarot pack with 78 uniquely different images.



CARD8 Bicycle Poker Deck
Playing Cards
Stunning set of Alchemy Studios playing cards, designed & made by Bicycle. A truly alternative collection of 55 different images from all categories of the Alchemy Art Library.



ULCARD UL13 Anarchy
Playing Cards
Uniquely designed playing card set, featuring a different UL13 image on each card.



AAP8
Poe's Raven
Clock



AAP12
Prince Of Oblivion
Clock

CLOCKS

A stunningly graphic selection of durable, 13 1/4" dia. (340 mm), quartz movement, Alchemy Gothic inspired wall clocks with some of Alchemy's most striking images. Requires one AA battery (not included).



AAP10
Birth Of A Demon
Clock



AAP11
Lightning Dragon
Clock

POSTER FLAGS

A massive 29" x 42" (750 mm X 1080mm) these full colour Poster Flags are made from lightweight polyester for indoor or outdoor use, and can be hung as a poster or flown as a flag.



ABF504
Mists Of Vespertide
Flag



ABF435
The Name Of The Rose
Flag



Alchemy LIFETIME GUARANTEE . . . Alchemy is the best!

And we guarantee our Alchemy England crafted pewter products* to be hand made to the highest standards and of the finest materials, and will therefore repair or replace any such purchased item suffering from defects or faulty workmanship at any time, free of charge!

(*made at our Leicester workshops - please see our Guarantee and Returns Policy at www.alchemyengland.com/guarantee).

Real Pewter!

The metal used in the manufacture of all Alchemy's pewter products is the highest grade "English Pewter". Some manufacturers misleadingly use the term 'pewter' to describe alloys containing lead. This results in inferior, more easily made products which are heavier, softer and of a darker colour and are much more prone to tarnishing and disfigurement. English Pewter is the finest grade of pewter, (to BSEN611-1:1995 standard). Traditionally, pewter was a mixture of lead and tin, but today, English Pewter is a rich, high-grade alloy of 92% tin with copper, (plus a few legitimate trace elements), and is regarded as a 'semi-precious' metal valued second only to silver. For jewellery and accessories this is the safest tin-based alloy in use and is fully lead, cadmium & nickel compliant to California Proposition 65 for total lead & cadmium content, Commission Regulation (EU) 494/2011 (REACH) for lead & cadmium and European standard BSEN1811:2011 for nickel. English Pewter is very much harder to craft than zinc alloys and the old and primitive forms of pewter, which contain significant amounts of toxic impurities which ease production, however, please beware as these poor alloys are still used by many manufacturers around the world today.

Copyright, Imitations & Forgeries:

All products and designs are the exclusive copyright of Alchemy Carta, England, and are registered designs and trademarks world-wide. Alchemy Studios conceive, research, design and develop all their ideas and products themselves, at considerable cost, to bring you fresh, new creations. Any attempt at forgery, imitation or passing-off endangers Alchemy's existence. Therefore, infringements will result in investigation leading to prosecution. Any assistance from our customers against piracy will be greatly appreciated.

Looking after your Alchemy

Pewter, like silver, may tarnish, but can easily be polished up to a brilliant lustrous shine, using a brass or silver polishing wad and a wipe with a dry cloth. DO NOT put pewter into a salt-loaded dishwasher, which could corrode a polished surface. Alchemy Guarantee: Alchemy will gladly replace any product proven to be defective.

Trade Memberships

Alchemy Carta Ltd. are proud to be members of the Giftware Association.

Trade & Identification Marks

All products, space permitting, are marked with one or more of the following identification marks, or their derivatives :



Disclaimer:



At Alchemy we make all our jewellery by hand. We are very proud and work extremely hard to achieve our high standards. However, we also have to buy-in components from other suppliers and while we do our very best to maintain this quality, we cannot always rely on their availability or consistency. We therefore reserve the right to change crystals, chains and other findings, or even to discontinue pieces if necessary and apologise for any such disappointment.

Brochure:

This brochure and all of the products, artworks and Trade Marks featured within it are the exclusive copyright of Alchemy Carta Ltd., England. All rights reserved.

ALCHEMY licensing™

Alchemy Studios' unique and growing collection of distinctive artwork has, for many years now, been inspirational and highly influential within the alternative genres. Over time, its images have been used on T-shirts, posters and calendars, etc. But now, Alchemy's international appeal has led to a great variety of different licensed products being developed with over 40 official Licensees worldwide, and these are available through various distributors. Unfortunately, Alchemy are unable to sell most of these items themselves, however you can contact all our Licensees directly for details through the Alchemy licensing website at:

www.alchemylicensing.com



**Steel Ground
Shoes, Portugal.**
www.steelground-shoes.com
Alternative footwear.



Signature At Home, UK.
www.signatureathome.com
Bedding, pillows, throws & more.



CONSALNET

Consalnet, Poland.
www.consalnet.pl
Murals and wall decor.



**Live d.o.o.,
Slovenia.**
+386 056608109
Stationery,
School items.



D'Addario
PLANETWAVES™

Planet Waves, USA.
www.planetwaves.com
Guitar straps.



Hot Picks
GUITAR ACCESSORIES

Hot Picks, USA.
www.hotpicksusa.com
Standard & motion guitar picks.



LLEWELLYN
New Worlds of Mind and Spirit

Llewellyn Worldwide, USA.
www.llewellyn.com
Books, calendars & tarot publishers.



THE WORLD OF 3D

The World Of 3D, UK.
www.worldof3d.co.uk
3D postcards,
prints, bags & more.



PYRAMID INTERNATIONAL
Pyramid International, UK.
www.pyramidinternational.com
Calendars, mugs & many more
printed products.

Retriever Sports

Retriever Sports, UK.
www.retrieversports.com
Dart Flights.



DecalGirl

Decal Girl, USA.
www.decalgirl.com
Mobile device skins.





ALCHEMY ENGLAND

Apparel

Genuine Alchemy art with Italian styling
-ALCHEMY ENGLAND APPAREL-
original designs; the proper alternative.

Alchemy England Apparel -AEA-

Alchemy, the English veteran alternative lifestyle artists and designers have teamed up with an edgy Italian streetwear designer and manufacturer to bring you

Alchemy England Apparel.

Together we have been creating unique, original, rock style clothing for guys and girls.

Go on, we dare you to be different...

To view the full inspiring collection or inquire about stocking it, please visit the website:

www.alchemyenglandapparel.com



Model photographs on this spread courtesy of : Alchemy England Apparel



© Alchemy England 1977 Dealer

ALCHEMY
England 1977

WWW.ALCHEMYENGLAND.COM