



ALCHEMY

ROSA

NOCTIS



England · 1977

EXTRAORDINARY DESIGN



ALCHEMYTM



England · 1977

Model is wearing :

P748 Wings of Eternity Necklace
E367 Wings of Eternity Earrings

Model : Dani Divine

www.facebook.com/danidivinemodel

Rosa Noctis

The paradigm of virtue, perfection and honour, as mystical and as rare as the eponymous black rose of the night, of which there is only one, and blooming just once, on the rise of the Rose Moon of June. Painted on board, in the true Pre-Raphaelite traditions of mediaeval romanticism, natural realism and spiritual integrity instilled by the likes of Millais, Hunt, Rossetti and Dilley, the Rosa Noctis radiates the principles of a wondrous and magical era.

The words 'Thank You' are simply inadequate to properly express our appreciation of all of our customers and fans, everywhere, for supporting Alchemy since 1977 and giving us the opportunity to express and enjoy ourselves in our efforts to create the things we love. We know that we are in a minority and that we are often misunderstood, but we believe that our darkly mysterious community is special. And we enrich each other and society in general with our Delphic notions, our arcane activities and imaginative expressions - the World would be a very dull place without you! So, 'Thank You' all.

And while I have voice, I sincerely have to applaud all of the wonderful, passionate managers and staff, the uniquely skilled artisans and the immensely talented and dedicated artists, model makers and creative geni of the Alchemy crucible for the continuing successful development of this irrepressible tradition, and now a great institution.

Salute!



Contents

Neckwear Pendants / Necklaces / Chokers / Chains / Neck Thongs . . .	4 - 29
Earrings Earrings / Ear Studs / Cuff Studs / Ear Wraps Faux Stretchers	30 - 39
Rings	40 - 44
Buckles & Belts	45 - 47
Armwear Bracelets / Bangles / Wriststraps	48 - 55
Timepieces Wristwatches / Fob Watches / Fob Chains	56 - 59
Accessories Men's: Lighters, Walking Canes, Shirt Accessories Women's: Hair & Dress Accessories, Jewellery Stand, Handbags & Purses	60 - 61 62 - 63
Bags Women's & Men's Bags	64 - 65
T-Shirts	66 - 67
Drinking Vessels Absinthe / Glassware Ale Glasses / Tankards / Shot Glasses / Flask	68 - 69 70 - 71
The VAULT Resin Giftware	72 - 77
Under License Products Clocks / Flags / Cards / 3D Postcards / Signs	78
Important info	79
AEA Fashion	80 - 81
Licensing	82 - 83

www.alchemyengland.com



Hand Made In England

All of Alchemy England's pewter products are individually designed, modelled and developed in England by the Alchemy Studios creative art and design team. Each individual product is then hand-made with pride from the finest English Pewter by Alchemy's own highly skilled craftsmen, all at our studios and workshops in Leicester, England.

Product Key

Further Information



Online, at www.AlchemyEngland.com, you will find fuller and extended product descriptions and detail. And in News & Community there, you can go to the dedicated www.alchemygothic.com website, click on the Museum & Library link and find a choice of reference features: full backgrounds and stories behind Alchemy pieces; detailed articles on the symbols, histories and characters of Alchemy Gothic's subjects and designs; view all of Alchemy Studio's artwork; find out who is The Alchemist, and very much more.



Replacement Glassware

In the case of accidents, a product repair and glass replacement service is available to our customers. For details contact our factory directly: servicedept@alchemygroup.com



Crystals

The colour of the crystals and gemstones featured within this brochure may vary at point of manufacture, according to availability.



Swarovski Elements

Items with this symbol are made with SWAROVSKI ELEMENTS.



NEW!

Items with this symbol are new products

Cover Illustrations

Front: 'Rosa Noctis'. Back: 'Hora Mortis'. © Alchemy 2015/16.

Website

All of the items shown in this catalogue can be seen with many more image views, information and in greater detail on our website, at:


www.alchemyengland.com

For the **Alchemy Lifetime Guarantee**, **Swarovski Elements**, **Our Fashion Sponsors**, **Point of Sale** and **Looking after your Alchemy** etc, please see inside back cover.

Neckwear

All necklaces and pendants are cast and hand-made in fine English pewter, many with additional high quality crystals, Swarovski Elements and other components. Some feature hand-plating and/or other contrasting finish and all come complete upon either nickel-free chain or other necklace as shown, of appropriate length.

Visit our website www.AlchemyEngland.com for additional views and more detailed information.

 For more information behind Alchemy's arcana of subjects, relating to products, symbols, designs and very much more, see "Further Information" on page 3.



1
P749
Elizabethan Court
Necklace



3
P748
Wings Of Eternity



2
P746
Blood Heart




4
P743
Aequicorn



5
P741
San Esteban Pearls

1 **P749**
Elizabethan Court Necklace
Necklace


From Robert Dudley's original, censored design for the decorative moulding above the North entrance to Kenilworth Castle, in honour of his secret love. ‡ N 

See the entire Elizabethan collection on page 35.


2 **P746**
Blood Heart
Necklace

The female corsair, amorous she wolf and destroyer of men's hearts; red enameled heart with two acrylic roses on black ribbon. N


3 **P748**
Wings Of Eternity
Necklace

A symbol of everlasting life and love, a black rose ankh taking flight upon delicate Baroque-laced wings; tri-toned pewter on chain, with Swarovski crystal droppers. Shown with matching earrings- E367. ‡ N 


4 **P743**
Aequicorn
Pendant

The preserved remains of an elusive, mythical and magical creature of the shallow seas, the famed horned seahorse, identified in Solinus' lost classical bestiary; with Swarovski crystal. ‡ N 

5 **P741**
San Esteban Pearls
Necklace

A jewel taken from a captured Spanish Armada officer, following the shipwreck of the San Esteban in Ireland, before he was hanged with all other survivors; with Swarovski crystal pearls and on black satin ribbon. ‡ N 

6 **AW26**
Temp de Sentiment
Pendant /Fob Watch

The key to happiness and contentment is so often found in the memories of past loves and times gone by...With 24mm dia. quartz movement. ‡ N 



6
AW26
Temp de
Sentiment



7
P742
Keepers Of The
Tyrian

8
P740
Wounded Love



9
P738
Elizabethan
Choker



7 P742
Keepers Of The Tyrian

Pendant

A precious, Tyrian Purple 'pearl', caged and protected by its immortal keepers, as the ancient Phoenicians prized its hallowed properties throughout antiquity; with amethyst glass ball and Swarovski crystals on 32" chain. ‡ N

8 P740
Wounded Love

Choker

A barbed and gaping hole is left bleeding, where there was once a dark and mysterious romance; with black acrylic rose on black velvet choker. Shown with matching earrings - E365. ‡ N

9 P738
Elizabethan Choker

Choker

From Robert Dudley's original, censored design for the decorative moulding above the north entrance to Kenilworth Castle, in honour of his secret love; on black velvet choker. Shown with matching earrings - E366. ‡ N
See the entire Elizabethan collection on page 35.



Model is wearing :

Wings of Eternity Earrings E367
Wings of Eternity Necklace P748

Elisanth - www.elisanth.com : Model
Zatsepin Alex - www.zatsepin-alex.com : Photo
Samhain - www.samhaincontactlenses.com : Lenses

1 P736
Rabeschadel

Choker
German for 'raven's skull'; the great black birds are famous for their prophetic powers and, as the eyes and ears of Odin. On black silk ribbon for hand-tying. Shown with alternate view. **N**

2 P745
Ravenger

Pendant
The dark and mysterious phantom; black pewter wings with polished ravens skull. Shown with extra view. **N**

3 P734
Black Talon

Pendant
The foreboding claw of the corvus corax, clutching a sanguinary, marbelised glass orb to scry for telling omens; with freely rotating blood splattered 'dracula' sphere. Shown with side view. **N ‡**

4 P739
Harbinger

Pendant
Black: black as a young raven with a black rose, hanging from a black ribbon; be wary of the herald that wears this token! On black satin ribbon with Swarovski dropper. **N**

5 P735
Caw At The Moon

Pendant
The glowing lunar disk dramatically silhouettes an already black and portentous raven, guarding its realm. On 21" black curb chain. **N**

6 P715
Ruah Vered

Pendant
The spirit and the 'Breath of Life', entwined with the romantic and sensual rose of faithful love. On a 21" trace chain.

7 P677
A Murder Of Crows

Necklace
An intimidating but darkly beautiful collection of scattering Corvidae, with Swarovski crystals, highlighted, polished black pewter and black chain. ‡ **‡**



1
P736
Rabeschadel



2
P745
Ravenger



3
P734
Black Talon



ALCHEMY
England · 1977

Model is wearing -
E359 Rabeschadel Earrings
R201 Rabeschadel Ring
P734 Black Talon Pendant
Model : **Lady Amaranth**
www.facebook.com/lady.amaranth

4
P739
Harbinger



5
P735
Caw At The Moon



6
P715
Ruah Vered



8
P697
Ravenine



7
P677
A Murder Of Crows

9
P695
The Romance Of
The Black Rose



10
P705
Maryam Theotokos
Ring Cross



11
P640
She Walks In Beauty



12
P717
Golgotha



13
P728
Amber Dragon
Thorhammer



8 P697
Ravenine
Pendant
The raven, an ancient symbol of protection, information and dark secrets. On 18" chain.

9 P695
The Romance Of The Black Rose
Pendant
The most desired and most unattainable bloom known to man - an impossible dream! On 18" chain.

10 P705
Maryam Theotokos Ring Cross
Necklace
A strange and secretive pendant found in the 19th century amongst the ruins of Coustaussa Castle, Languedoc. It is impossibly encircled by a gold ring, both it and the cross being inscribed with mysterious Latin riddles. ‡

11 P640
She Walks In Beauty
Choker
A Delphic and lamentable line from the pen of the inimitable Lord Byron, but for whom...? The impressively mounted central black onyx stone is encircled by Byron's brass-etched poem; on black lace choker, with 2-tone pewter, black onyx cabochons & Swarovski jet teardrop droppers. ‡

12 P717
Golgotha
Necklace
"The place of the skull", and the site of the crucifixion depicted by a differentially chained cross and black crystal mark the scene of a deep and passionate suffering. On a 19" trace chain. ‡

13 P728
Amber Dragon Thorhammer
Pendant
A classic, ornate and highly intricate pagan amulet of power and protection, fit for a high ranking Saxon or Viking leader, set with polished, translucent, 30 million year old amber. On a 21" trace chain. ‡

1 **P725**
Love Is King

Couples Necklace

A sword through the heart, betokening love conquered and a forever-bond. The sword withdraws from the Swarovski crystallised heart for the two to be worn separately as tokens of betrothal. The heart is on a 22" blue ribbon & the sword, a 21" curb chain.

Pictured with alternate views showing the two separate necklaces and the sentimental quotation engraved upon the back of the combined pieces. †



LOVE RULES
HIS KINGDOM
WITHOUT A
SWORD



1
P725
Love Is King

2 **P689**
A Rose For Eve

Necklace

Further tempting Eve with a black rose, eliciting sentiments of heavenly perfection, though ominously shadowed with loss. Tri-tone pewter on chain.

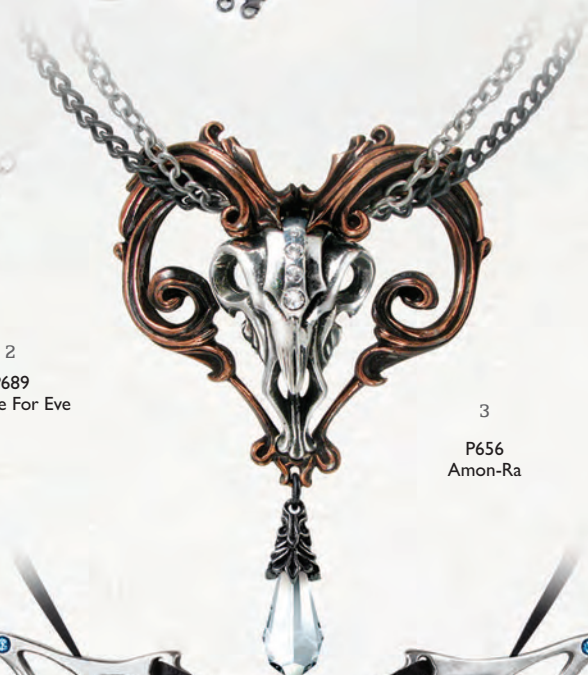


2
P689
A Rose For Eve

3 **P656**
Amon-Ra

Necklace

The ancient Egyptian god of creativity and fertility, astronomically related to the constellation of Aries; two-tone, with Swarovski crystals and dropper: †



3
P656
Amon-Ra

4 **P702**
Herz Leben

Pendant

A gothicised symbol of eternal life, the ankh, melded subtly with the background heart and prominently surmounted by a sumptuous amethystine gem; with Swarovski crystal. †



4
P702
Herz Leben

5 **P723**
Heart Of Cthulhu

Necklace

A revealing of the monstrous, crystallised soul of darkness. With faceted Swarovski crystal heart in a multi-coloured, iridescent volcano effect. On a 33" trace chain. †



5
P723
Heart of Cthulhu

6 **P667**
Moulin Rouge Vampire

Necklace

The wings of a temptress in Parisian art nouveau, crystallised in shades of dusk, when the sybarites come out to play; laced with black ribbon fitting & bedecked with Indicolite crystals and dark secrets. On 18" chain. †



6
P667
Moulin Rouge
Vampire

7 **P718**
Key To The Secret Garden

Necklace

Shrouded in mystery, could this be the key to life itself? Set with a large emerald-green Swarovski crystal and matching droppers. On a 21" trace chain. †



7
P718
Key To The Secret
Garden

8 **P593**
The Westenra Choker

Choker / Matching Earrings

Lucy's lavishly delicate jugular garnish, stylishly concealing the punctures beneath. Set with Swarovski crystals. On black satin ribbon, with adjustable metal fastening. †

Shown here with matching earrings, E289 Westenra Spica.



8
P593
The Westenra
Choker

† Specified crystal colours are subject to availability and may be substituted.



ALCHEMY
England · 1971

Model is wearing :
P712 Empyrean Eye Necklace
E350 Empyrean Eye Earrings
P711 Crystal Heart Pendant

Model : **Mahafsoun**
www.facebook.com/MahafsounArt



9
P711
Crystal Heart

10
P712
Empyrean Eye:
Tears From Heaven

9 P711
Crystal Heart
Pendant
A pure heart of rainbow-spangled white crystal is set inside a simple foliate frame of Victorian sentiment; Swarovski crystal. ‡💎

10 P712
**Empyrean Eye:
Tears From Heaven**
Necklace / Matching earrings
The eye of God, shedding tears of grief for humanity as he regards the world from the highest firmament; with striking 'Aurore Boreale' Swarovski crystals. ‡💎
Shown with matching earrings, E350.



11
P703
Frozen Heart

11 P703
Frozen Heart
Necklace
Dripping from the wings of love, a cold and frozen heart. Set with a diamond shape of pale blue Swarovski crystals & suspending a matching blue crystal heart. On a 18" trace chain. ‡💎



12
P726
Dogaressa Choker

12 P726
Dogaressa Choker
Choker
The Dogaressa of Venice, wife of the Doge of a crumbling empire. From the rich regalia of office, a last token of forlorn devotion to the bereaved Renaissance Lady of the Palace. On a black satin hand-tie ribbon.
Shown with matching items R199 & A104 The Dogaressa's Last Love Ring & Bracelet. ‡💎



13
P716
Seraph Of Light

13 P719
Seraph Of Light
Necklace
The Seraphim, the celestial angels ordained to bestow charity and to protect God's throne. With pale pink cabochon and matching Swarovski crystal dropper. On a 20" doubled, split trace chain. ‡💎
Shown with matching earrings E351 Seraph of Light, & complementary ring R198 Bower Troth Ring.



Model is wearing :
Seraph Of Light Necklace P719
Model : **Lady Amaranth**
www.facebook.com/lady.amaranth

◆ Made with -
SWAROVSKI ELEMENTS



1
P700
Bacchanal Rose



2
P704
The Palatine Pearls
Of The Underworld



3
P706
Funeral For A
Paramour



4
P701
Viennese Nights

1 **P700
Bacchanal Rose**
Necklace

A sumptuous necklace with a romantic motif hiding, or revealing, a secret libertine passion for wine and sensual pleasures; with black acrylic roses & Swarovski crystals.

For companion earrings E347 see page 31, & bracelet A106 page 49. ‡

2 **P704
The Palatine Pearls
Of The Underworld**
Necklace

From the mantle of the Lord Of The Afterlife, the train of tyrian 'Crystal Pearls' are set between grotesque masks of mortality; with Swarovski 'pearls' and crystals and on black satin ribbon. ‡

3 **P706
Funeral For A Paramour**
Necklace

A tangled confusion of love, devotion and mourning for an impassioned and devastating loss; with black pewter rose head, red satin coffin pad & Swarovski crystals. On black satin ribbon. ‡

4 **P701
Viennese Nights**
Necklace

The decorous Renaissance scrollwork is subtly fashioned in the form of the quintessential creature of the night; with bat bodies of black Swarovski crystals.

New matching bracelet on page 49. ‡

5 **P720
The Murnan
Cross Of Sorrow**
Necklace

Bearing the black cross of abject mourning, the tortuous dark thorns hold telling droplets of crystal blood. On black satin ribbon, to be tied. ‡

6 **P721
The Blood Rose Heart**
Necklace

A dark romance secretly blossoms from the life blood of a once broken heart; with Swarovski crystals set beneath the red enamel blood. ‡

The understated companion piece to P630 Bed Of Blood Roses, specially designed for everyday wear. Matching earwrap (E329, page 37) & watch (AW22, page 57).

5
P720
The Murnan Cross
Of Sorrow



6
P721
The Blood Rose
Heart





7
P550
Bleeding Heart

8
P365
Crystal
Pentagram

9
P692
Love Imprisoned

10
P688
Serpent's Eye

11
P699
Asmodeus

**7 P550
Bleeding Heart**

Necklace
A cascade of crystal blood pours from the cruel wounds of a tortured love; adorned with Swarovski crystal droppers. Matching earrings, E272, page 32. ‡

**8 P365
Crystal Pentagram**

Pendant
Swarovski crystal-set, magical star of protection. ‡

**9 P692
Love Imprisoned**

Pendant
A cruel bouquet of barbed wire, ensnaring the anguished crystal heart and tormenting the forlorn lover; with Swarovski crystal heart. ‡

**10 P688
Serpent's Eye**

Necklace
A triskelion with sacred healing powers, encircling the red abalone snake-eye, to protect against the evil eye. ‡

**11 P699
Asmodeus**

Necklace
One of the seven princes of Hell, the demon of lust... Features red enamelled horns and a red Swarovski crystal. With lengths of fine chain dripping from the teeth. On a 21" trace chain. ‡



Model is wearing :
Viennese Nights Bracelet A108
Viennese Nights Necklace P701

Elisanth - www.elisanth.com : Model
Zatsepin Alex - www.zatsepin-alex.com : Photo
Samhain - www.samhaincontactlenses.com : Lenses
The Gothic Shop - www.the-gothic-shop.co.uk : Jacket

Made with -
SWAROVSKI ELEMENTS

Neckwear is approx. 75% of actual size.

‡ Specified crystal colours are subject to availability and may be substituted.

ALCHEMY
England · 1971



1
P158
Vampyr



2
P659
Gothic Matrimony



3
P600
La Nuit



4
P577
Bestia Regalis



1 P158
Vampyr

Pendant
Vision of the nocturnal nightmare.

2 P659
Gothic Matrimony

Necklace
Tying the knot with a touch of romantic darkness; articulated ribbon with Swarovski crystals. ‡

3 P600
La Nuit

Pendant
A crystal luxuriance on the wings of the night; with Swarovski teardrop crystal. ‡

4 P577
Bestia Regalis

Necklace
Guardian of the ornate entrance to a gothic sanctum of the otherworld spirits; with articulated wing & emerald Swarovski crystal held by the dragon's tail. Companion earring, see E286 page 32. ‡

Model is wearing :

- E273 Queen OfThe Night Earrings
- P503 Queen OfThe Night Necklace
- R120 Absinthe Fairy Spirit Crystal Ring
- A69 La Fleur de Baudelaire Bangle

Model : La Esmeralda
<http://modellaesmeralda.blogspot.de/>
www.facebook.com/Alternative.Model.La.Esmeralda

6
P727
La Belle Esprit



5
P497
Seal Of The
Sephiroth



7
P526
Absinthe Fairy



8
P432
Emerald Venom



10
P503
Queen Of The Night



9
P607
Sucre Vert
Absinthe Spoon



11
P517
La Fleur de
Baudelaire



5 P497
Seal Of The Sephiroth
Neck Thong
From the ancient, Judaic mystical Kabbala, are recited the names of the five elemental rulers (Ariel, Kerub, Seraph, Tharsis and Avir), of the Sephiroth, the attributes from which Yahweh created all things. With double thong fitting fastener.

6 P727
La Belle Esprit
Necklace
A huge and confident statement of opulence and a taste for exotic pleasures. This winged fairy is highlighted by an absinthe green, Swarovski faceted crystal, and a crystal 'sugar cube' dropper to complete the ceremony. On grey satin ribbon, for tying-off at your own length. ‡

7 P526
Absinthe Fairy
Necklace
The spirit of wormwood rises from the absinthe-green enamelled visage of mortality; with Swarovski crystal. ‡

8 P432
Emerald Venom
Necklace
The deadly predator, poised to sink its irresistible fangs; with two Swarovski crystals. ‡

9 P607
**Sucre Vert
Absinthe Spoon**
Pendant
Green Sugar: a miniature wearable token of a secret life; an Alchemy absinthe spoon, signifying an existence dedicated to hedonistic pleasure and sublime aestheticism; set with large, limpid Emerald green Swarovski crystal. ‡

10 P503
Queen Of The Night
Necklace
The antipathy of the ancient Iranian prophet sage Zoroaster's 'Moral Order'. A flamboyant Swarovski crystal-laden baroque extravagance representing opulence and decadence. ‡
Shown with matching earrings (E273) and complementary Absinthe Fairy Spirit Crystal Ring (R120).

11 P517
La Fleur de Baudelaire
Choker
Paris' celebrated C19th 'gothic' poet, visionary and champion of the supernaturally creative powers of absinthe; with Swarovski crystals and elegant, bow-tied black ribbon. ‡
Shown with matching bracelet A69. Suggested matching earrings E273 Queen of The Night.

2
P456
Renaissance Cross
Of Passion

3
P693
O Fortuna

5
P597
Om Strygia

7
P693
Death Of
A Vampire

1
P58
Pentagram

4
P698
Gothic Devotion
Cross

6
P501
Chaosium

1 P58
Pentagram

Pendant
Quintessential forces of man.

2 P456
**Renaissance
Cross Of Passion**

Pendant
With customary lavish Orthodox flourishing, the deep red Swarovski crystal Sacred Heart is displayed. (With 50mm extender chain). ‡

3 P693
O Fortuna

Necklace
A transcending spirit of harmony and mankind and the perfect union of opposites; with Swarovski crystal. ‡

4 P698
**Gothic
Devotion Cross**

Necklace
One of the most potent and widely used amulets in the world, the Apostle's Cross. On 18" chain.

5 P597
Om Strygia

Necklace
A vampire bat of Balkan severity and proportions.

6 P501
Chaosium

Necklace
A shimmering, metallic hematine cabochon forms the nucleus of this mystery-shrouded symbol of anti-order; the eight arrows of chaos. ‡

7 P693
Death Of A Vampire

Pendant
The Swarovski 'Siam' crystal heart of a vampire, immutably staked and eternally consigned to ashes and oblivion. ‡

8 P713
Schadel Des Jarl

Pendant
The strength and fortitude of the Dark Age, Scandinavian rulers will be with you, when you possess the "Skull of the Earl".

9 P722
Alter Orbis

Necklace
A pitifully brutal end to mortal existence, and an exquisite entry into the "Other World".

Model is wearing :
Betrothal Ring R134
Renaissance Cross Of Passion Pendant P456

Model : Mademoiselle Karma
www.facebook.com/MademoiselleKarmaModel

Photo : Ewiglich Fotografie
www.facebook.com/EwiglichFotografie

8
P713
Schadel
Des Jarl



9
P722
Alter Orbis



10
P466
The Sacred Heart



11
P655
Eventide



12
P539
Nevermore
Cross



13
P508
Ankh Of Tau



14
P660
Drakul's Mirror

10 P466
The Sacred Heart
Necklace
A splendour of Swarovski crystals and enamel encrust this lavish icon to the suffering. †

11 P655
Eventide
Necklace
The alluring scene is set for romantic and seductively dangerous engagements; with mother of pearl moon and 9 Swarovski crystal stars.
With matching earrings E318 & bracelet A99 (pages 32 & 50). †

12 P539
Nevermore Cross
Pendant
In homage to Edgar Allan Poe this mourning cross is inscribed with the raven's single word answer to all questions, 'Nevermore'; from the 1845 poem "The Raven". †

13 P508
Ankh Of Tau
Pendant
The esoteric Tau Cross combined with the wise and divine serpent, to form the Egyptian ankh of eternal life. In two-tone antique gold plate.

14 P660
Drakul's Mirror
Necklace
Framed in his gigantic, decaying entrance hall, hangs the glass in which he will never see himself; with engraved acrylic mirror and Swarovski crystal. †

15 P630
Bed Of Blood Roses
Necklace
The heart is the seedbed of tangled emotions and condemned romance; black roses flourish in the heart's blood. Swarovski crystals sparkle from beneath the blood red enamel.
Matching earwrap (E329, p.37) & watch (AW22, p.57). †

15
P630
Bed Of Blood Roses



ALCHEMY
England · 1971



1
P408
Catafalque

1 P408
Catafalque
Choker
Black ribbon choker of funerary grace; with black onyx gemstone. †

2 P610
Black Romance
Necklace
A black and tortured heart in flight on the extended wings of fickleness. With black enamelled heart.
Companion bracelet available, A83, page 49.



2
P610
Black Romance

3 P646
Aqua Dragon
Necklace
A phantasmagoric spectacle of natural power and grace, encrusted with the glittering, elemental symbols of water; with Swarovski crystals. †

4 P564
A Fairy's Dream
Necklace
Spirits of the Otherworld chasing their dreams. With 'fired' stainless steel filigree etched wing. The intricate dragonfly has vintage 'eau de nil' tinted, enamelled wings.



3
P646
Aqua Dragon



4
P564
A Fairy's Dream



6
P615
Eve

5 P410
Coeur Noir
Choker
Graceful, enamelled winged-heart choker on black cord.

6 P615
Eve
Pendant
The shameless personification of woman as the Original Sin - the irresistible temptress to the eternally and hopelessly beguiled male gender; the serpent coils evocatively around a massive, early C. 20th style, Swarovski crystal. †



7
P206
Noctis Cross



8
P618
Osbourne's Cross



5
P410
Coeur Noir



9
P609
Diamond Heart



10
P482
Balkan
Revenant's
Cross

11
 P650
 Chaosagram



12
 P529
 Rod of Asclepius



13
 P229
 Wolverine Moon



7 P206
Noctis Cross
 Pendant
 Gothic pewter cross with haemoglobin red and black enamel.

8 P618
Osbourne's Cross
 Pendant
 Sign of a priest of darkness. Black enamel cross.

9 P609
Diamond Heart
 Pendant
 An accursed black dragon, with the heart of a diamond; a metaphor for a dangerous relationship, or else a powerful ally? Set with eleven Swarovski crystals. ‡

10 P482
Balkan Revenant's Cross
 Pendant
 Greek Orthodox cross, inlaid with protective, amuletic sigils and provincial names for the vampire; vlokoslak, upir, vrykolakas and strigoli; two-tone pewter on antique trace chain.

11 P650
Chaosagram
 Pendant
 The pentagram is The Spirit, the chaos star, the reign of disorder and, therefore, behold the symbol of belief in the self-determination of the independent mind; pewter and black enamel.

12 P529
Rod Of Asclepius
 Pendant
 Symbol of the omnipotent Greek God of healing and a natural receptacle for secret and elixial potions; strong glass vial with cork stopper. (Intended for decorative purposes only and does not open).

13 P229
Wolverine Moon
 Pendant
 Beware the full moon and the silver dagger; with two moonstones. ‡

Model is wearing :
 Deadskulls E364
 Catafalque P408
 Raven's Claw Stone P734

Model : **Lady Amaranth**
www.facebook.com/lady.amaranth



ALCHEMY
 England · 1971

Model is wearing :

E264 Empress Eugenie Earrings
 P531 Empress Eugenie Necklace

Model : La Esmeralda
www.facebook.com/Alternative.Model.La.Esmeralda

**1 P531
 Empress Eugenie's
 Blue Heart Diamond**

Necklace
 After the rare, massive blue heart diamond, which legend says once belonged to the empress consort of Napoleon III (1852-1870), before it was 'discovered' by Cartier, in 1908. With large Swarovski blue heart crystal. ‡

With matching earrings E264 and complementary Britannia Gem ring R188.



1
 P531
 Empress Eugenie's
 Blue Heart
 Diamond



3
 P447
 Blood Moon



**2 P397
 Illuminati Cross**

Pendant
 Rome: The Angels of Bernini steer the sacred path of light through the altars of science; set with Swarovski crystals. With 50mm extender chain. ‡



2
 P397
 Illuminati Cross

**3 P447
 Blood Moon**

Pendant
 A skein of bats flutters about this deep and sinister portent.



**4 P446
 Coeur Sauvage**

Necklace
 Conflicting beauty and duality of the heart; with Swarovski crystal. ‡



4
 P446
 Coeur Sauvage

**5 P403
 Croix Sinestre**

Necklace
 Delicate, Victorian, grave-marking cross; with red Swarovski crystal. ‡



5
 P403
 Croix Sinestre

**6 P558
 Bitten Choker**

Choker
 'Revenant bitten, always smitten'. A soft, velvet band choker with Swarovski crystal 'bite marks' and cascading 'blood drops'. ‡



6
 P558
 Bitten Choker

‡ Made with -
 SWAROVSKI ELEMENTS
 Neckwear is approx. 75% of actual size.

‡ Specified crystal colours are subject to availability and may be substituted.



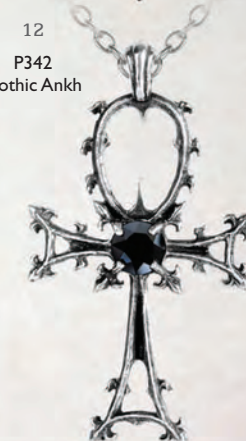
7
P666
Natural Magic:
The Lore Of
The Forest



8
P502
Order Of
The Black Rose



9
P417
Draconkreuz



12
P342
Gothic Ankh



10
P530
Passion



11
P452
La Mort de
Coeur

7 P666
**Natural Magic:
The Lore Of The Forest**

Pendant
The eye of an Ent, a giant, talking tree and oldest, wisest being to exist in the dark world of the Middle Ages; in bronzed pewter with realistic acrylic eye and multiple Swarovski crystals. †

8 P502
**Order Of
The Black Rose**

Pendant
Facsimile regalia of the cryptical, C17th fraternitatis of alchemists and the Mystical Marriage ceremony.

9 P417
Draconkreuz

Pendant
Symbol of the obscure, medieval, mystic order and holders of arcane and ancient magical powers; with Swarovski crystals. †

10 P530
Passion

Necklace
A twisting knot of sacred thorns, weeping tears of blood-red Swarovski crystal. †

Matching ear-wrap E287 (page 37), bracelet A80 and ring R167 (pages 50 & 42).

11 P452
La Mort de Coeur

Pendant
Tragic death of the heart; set with Swarovski crystals. †

12 P342
Gothic Ankh

Pendant
A vampiric hybrid of the Egyptian symbol for eternal life and the stylistic form of High Gothic; Swarovski crystal. †

13 P560
Rose Of Passion

Necklace
'The unattainable black rose bleeds for what cannot be'; unique black pewter finish, studded with Swarovski crystals & hung on a satin and bead necklace. †

Shown with companion ear-wrap E276 (below)



13
P560
Rose Of
Passion



Model is wearing :
Rose Of Passion Ear-Wrap E276
Rose Of Passion Necklace P560

Elisanth - www.elisanth.com : Model
Zatsepin Alex - www.zatsepin-alex.com : Photo
Samhain - www.samhaincontactlenses.com : Lenses

1
P183
Nosferatu's
Rest



2
P121
Gothic Bat



3
P598
Kiss The Night



4
P235
Dante's Hex



6
P26
The Alchemist



7
P193
Black Raven



8
N182
Speculum



5
P252
Wolf



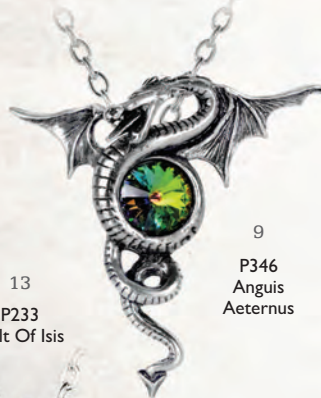
10
P95
St. Lorenze
Kruetz



11
N203
Angel Ring
Neck Thong



13
P233
Cult Of Isis



9
P346
Anguis
Aeternus

14
P26
Dragon's Claw



16
P323
The
Whitby Wyrn



12
P221
Ankh Of
The Dead



15
P351
Stella Igneous



**1 P183
Nosferatu's Rest**
Pendant
Encapsulated in a smoke glazed pewter coffin, the Prince is viewed in his matinal retreat.

**2 P121
Gothic Bat**
Necklace
Creature of the night in full flight; on split chain.

**3 P598
Kiss The Night**
Pendant
Discreetly tokening the owner's alternative tendencies.

**4 P235
Dante's Hex**
Pendant
Mediaeval style pentagram.

**5 P252
Wolf**
Pendant
The chilling sound of crying at the moon; black pewter with pearlescent white enamel.

**6 P26
The Alchemist**
Pendant
Classic skull of the philosopher; black rose two-tone pewter.

**7 P193
Black Raven**
Pendant
In two-tone, blackened pewter with polished mount. The Raven, the C. 20th symbol of the undead; on 27" ball chain.
Companion earrings E333, p. 32.

**8 N182
Speculum**
Neck Thong
The Latin inscription reads: "All things change and we with them", the inset mirror revealing the horrifying face of the future.

**9 P346
Anguis Aeternus**
Pendant
The Dragon of Eternity sustains the faceted vitrial crystal of life; Swarovski crystal. ‡

**10 P95
St. Lorenze Kreuz**
Pendant
Gothic tracery inspired by the great cathedral; black Swarovski crystal. ‡

**11 N203
Angel Ring
Neck Thong**
The seven planetary angels are depicted within the enamel, with the reverse side inscribed with their respective names, planets and days.

**12 P221
Ankh Of The Dead**
Necklace
Vampyre's talisman of eternity, incorporating its secret life-blood blade inside the symbolic scabbard; in antique silver-coloured pewter.

**13 P233
Cult Of Isis**
Pendant
Translucent red enamelled solar disk, horned and throned, of the great Egyptian and universal Goddess.

**14 P26
Dragon's Claw**
Pendant
Scaled dragon holding a smoked topaz 10mm crystal orb. ‡

**15 P351
Stella Igneous**
Pendant
Magical pentagram consumed by the purifying flames of divinity; bronzed two-tone.



17
P256
 Sword Of Destiny



18
P124
 Mediaeval Pentacle



19
P453
 The Chemical
 Wedding

16 P323
The Whitby Wyrn

Pendant
 The legendary North Yorkshire servant of the Antichrist rampant.

17 P256
Sword Of Destiny

Pendant
 With the Latin inscription 'Fortune favoured the brave' and the power of the pentacle.

18 P124
Mediaeval Pentacle

Pendant
 In the Middle Ages, the most common sign to ward off demonic powers; gilt two-tone with blue cabochon and Swarovski crystal. †

19 P453
The Chemical Wedding

Pendant
 The great metaphysical union of opposites; two-tone pewter.



Model is wearing :
 Gothic Bat Necklace P121
 Necrogram Ring R204
 Winged Skull Ring R207
 Empire Spur Gear Ring CL13
 Keys To Progress Shirt Sleeve Band GA2

Model : **Sebastian Black**
www.facebook.com/sebastian.black.artist

Made with -
 SWAROVSKI ELEMENTS

COPY OF A CURIOUS
LOVE LETTER
FROM A GENTLEMAN TO A LADY.

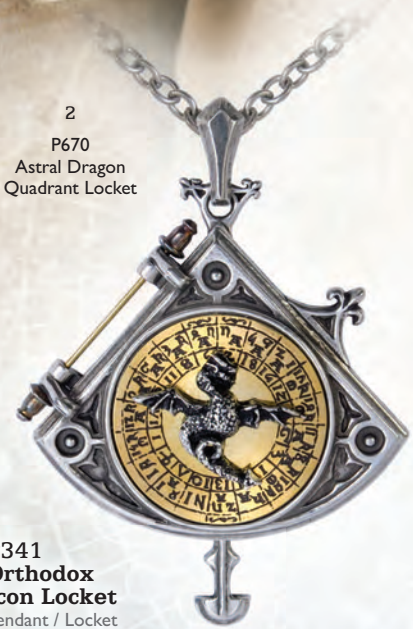
Locket



1
P341
Orthodox Icon
Locket



4
P690
Inamorato Locket



2
P670
Astral Dragon
Quadrant Locket



3
P742
Keepers Of The
Tyrian
(cage does not open)



5
P496
The Reliquary
Heart Locket

1 P341
Orthodox Icon Locket
Pendant / Locket
Photo locket in the authentic, classic style of an Eastern Orthodox Church icon. The front is set with impressive, black oval Swarovski crystal and has brass hinges and fasteners. To take two 20 x 30mm size pictures. †

2 P670
Astral Dragon Quadrant Locket
Pendant / Locket
A hidden portrait locket developed from a rare C.16th instrument, originally used by occultists for divination using the movement of the astral dragon through the heavenly stars. Pewter & etched brass locket; hinged with magnetic fastening.

3 P742
Keepers Of The Tyrian
Pendant
A precious, Tyrian Purple 'pearl', caged and protected by its immortal keepers, as the ancient Phoenicians prized its hallowed properties throughout antiquity; with amethyst glass ball and Swarovski crystals on 32" chain.
Cage does not open. † N

4 P690
Inamorato Locket
Necklace / Locket
A secret shrine in which to imprison the likeness of your lover. Hinged locket with magnetic catch, on satin ribbon & set with Swarovski crystals.
Inscription reads: "Love where Death has set his seal." And Thou Art Dead Lord Byron - 1812. †

5 P496
The Reliquary Heart Locket
Necklace / Locket
An ostentatiously sized, richly embellished heart locket, to take a generous memento picture; with inner mirror, brass top hinges, magnetic catch and a unique 21" black bead & red ribbon necklace. Measures 2" high.
Illustrating decoratively etched secret love poem; "Where I am always thou art, Thy image lives within my heart".



Model is wearing :
Keepers Of The Tyrian P742
La Mort De Coeur P452

Elisanth - www.elisanth.com : Model
Zatsepin Alex - www.zatsepin-alex.com : Photo
Samhain - www.samhaincontactlenses.com : Lenses

6

P708
Coeur Du
Morteur

7

P567
Corvus Machina

8

P592
Steam Hammer

9

P669
Pinkington's Precision
Warp-Dissection
Shears

**6 P708
Coeur Du Morteur**

Necklace

The heart and soul of a modern, mechanically minded lover, bearing the colour of their life-blood and the intricate workings of their complex mind; tri-tone pewter with Swarovski crystal. †

**7 P567
Corvus Machina**

Necklace / Locket

The perfection of life force and the seat of the deepest desires of modern man; brass-hinged locket with magnetic catch, transparent coloured rods and etched brass components.

**8 P592
Steam Hammer**

Pendant

Level mountains in a single blow, with the patent, new "Mjollnir of the Modern Age"! With copper & gold-plated pewter.

**9 P669
Pinkington's Precision
Warp-Dissection
Shears**

Necklace

Pre-emptive nanotechnology instrument for precisely cutting the fabric of time; articulated tri-tone pewter with Swarovski crystal adornments. †

Made with -
SWAROVSKI ELEMENTS

NECKWEAR | THE ALCHEMY ENGLAND COLLECTION 2015/16



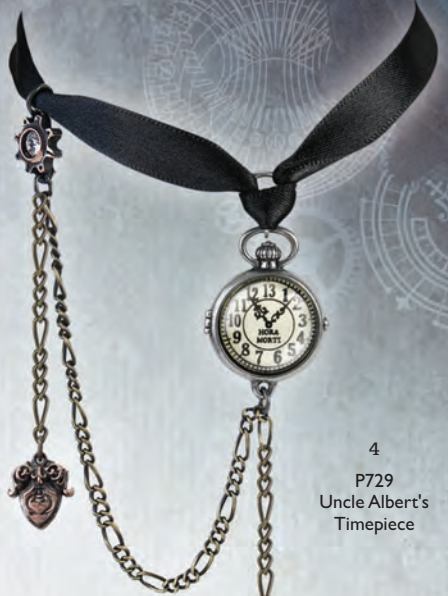
1
P707
Static Traction
Dagger



2
P671
Septagramic
Coercion
Gearwheel
Key



3
P694
Cloud Pilot's
Sextant



4
P729
Uncle Albert's
Timepiece



5
P606
Foundryman's
Ring Cross



6
P651
Ventus Traction
Farthing



7
P724
Orbium Coelestium
Mechanicum



VON ROSENSTEIN SET



**P188
Anguistralobe**
Pendant
Working miniature of C18th instrument to measure the direct path of destiny between specified heavenly bodies; pewter and brass.

1 P707 Static Traction Dagger

Pendant
Advanced prototype, electric-bolt arquebus; a top secret, ultra-precision, medium range, carriage mounted, rapid deployment field weapon; tri-tone pewter.

2 P671 Septagramic Coercion Gearwheel Key

Pendant
Obviously, a secure launch key from a highly advanced travel-machine, with its mechanised and coded seven-lever bit; two-tone pewter & brass wire.

3 P694 Cloud Pilot's Sextant

Pendant
An essential navigational instrument to fully exploit our scientific knowledge when piloting lighter-than-air ships. Multi-tone pewter, hematine cabochon on antique chain. Shown with target etch. ‡ ♦

4 P729 Uncle Albert's Timepiece

Choker
The perfect, miniature 13-hour Lunar-time fob watch and its essential accoutrements from the Victorian era, to grace the lithe neck of a sophisticated steampunk mistress. On black silk ribbon, for hand-tying. ‡

5 P606 Foundryman's Ring Cross

Pendant
The symbol of the old faith embodied and covertly embedded in the gears and steel of the ironworker's soul; with two-tone pewter; black diamond Swarovski crystal & hematine cabochon. ‡ ♦

6 P651 Ventus Traction Farthing

Pendant
A 'vernian' engineered interpretation of the humble penny farthing, energy assisted by wind and crank-rail technologies. Copper-plated, with rotating wheel.

7 P724 Orbium Coelestium Mechanicum

Pendant
This personal calibration instrument, a gyroscopic armilla, responds to the gravitational forces and global tides that govern our own corner of reality. All the rings independently spin upon their own axis, creating a functioning armillary-sphere.
With reverse view, showing rotation of the individual spinning rings.

8 P737 Blast Furnace Behemoth

Pendant
A monstrous, though benevolent steam-powered mechanical dragon of frightening proportions, representing the might of industrial progress. ‡ N ♦

♦ Made with -
SWAROVSKI ELEMENTS

8

P737
Blast Furnace
Behemoth

ALCHEMY[®]
England · 1977



Model is wearing :

Blast Furnace Behemoth P737

Model : Sebastian Black

www.facebook.com/sebastian.black.artist



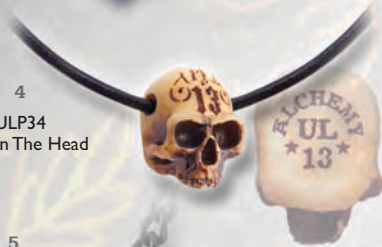
1
ULP38
Death Valley



2
ULP3
Trap Jaw



3
ULP9
Tattoo Gun



4
ULP34
Hole In The Head



5
ULP40
Pistonhead



6
ULP41
Sharp's Cross



7
ULP28
Let's Rock



8
ULP35
Steel Guitar

**1 ULP38
Death Valley**

Pendant
The Hell Rider can never lose. 2-tone pewter skull, helmet & crossed spannerbones on 4mm ball chain.

**2 ULP3
Trap Jaw**

Pendant
Fully 3-dimensional skull with unique articulated jaw; on braided leather thong.

**3 ULP9
Tattoo Gun**

Pendant
Fully 3-dimensional 2-tone tattoo gun. With engraved, copper-plated scroll on antique silver finish chain.

**4 ULP34
Hole In The Head**

Pendant
Talisman-style, bone-resin with scrimshaw carving. On waxed cord thong.

**5 ULP40
Pistonhead**

Necklace
Wheels have an engine, and a spirited engine has a soul, and sometimes the soul can be dark! On 21" black chain.

**6 ULP41
Sharp's Cross**

Pendant
Talismanic token of hard faith for the resolute gambling ace. With black enamel & etched black cabochon. **N**

**7 ULP28
Let's Rock**

Pendant
Fully modelled 50's radio mic with gold-plated "let's ROCK" scroll. Check out the secret rocker hiding in the back! On 2mm ball chain.

**8 ULP35
Steel Guitar**

Pendant
For those who ROCK! Fully modelled, iconic 'Gretsch' style guitar, with etched copper "Rock 'n' Roll" scroll; on braided leather thong.

**9 ULP42
Flame Brain**

Pendant
"Idle minds are the Devil's laboratory"! With red enamel & on adjustable waxed cord thong. **N**



Model is wearing :
ULP40 Pistonhead Necklace
E356 Magic Ram's Horn Faux Stretcher
Alchemy England Apparel T-shirt

Model : Dale Mellin
Photographer : Ester Segarra
www.e-segarra.com

9
ULP42
Flame Brain



10
ULFP21
Aces Up



11
ULFP19
Black Cherry



12
ULFP1
Swallow Heart



13
ULFP22
Forever Inked



14
ULFP3
Painted Lady



10 ULFP21
Aces Up

Pendant
How can anyone go wrong when charmed with all the aces of the four suits? Enamelled suits studded with Swarovski crystals. ‡

Matching earstuds ULFE21, see page 35.

11 ULFP19
Black Cherry

Pendant
The stones within each succulent red cherry are horribly deceptive! With black & red ribbon, enamel & red abalone cabochon. ‡

Matching earrings ULFE20, see page 32.

12 ULFP1
Swallow Heart

Necklace
Two tattoo-style swallows holding a red crystal heart; on fine trace chain. ‡

13 ULFP22
Forever Inked

Necklace
Swarovski crystal motor - coils power the tattoo machine in dead hands... and inscribe their statement of eternity. On a split, 18" trace chain with adjustable fastener. ‡

15
ULFP20
Devil Heart



14 ULFP3
Painted Lady

Necklace
Scrolled tattoo guns surround a pink Swarovski crystal heart; supplied on fine trace chain. ‡

15 ULFP20
Devil Heart

Pendant
Love is sinful, naughty and oh, so much fun! With translucent red enamelled heart & Swarovski crystal highlights. ‡

15A ULFR6 Matching ring for ULFP20

15B ULFE22 Matching earrings for ULFP20

15A
ULFR6
Devil Heart



15B
ULFE22
Devil Heart



Model is wearing :
Devil Heart Pendant ULFP20
Devil Heart Ring ULFR6
Devil Heart Earrings ULFE22

Dani Divine : Model
www.facebook.com/danidivinemodel

1 P730 Bushido
Pendant
The seven virtues of the Samurai warrior, engraved down the length of the Katana's blade. **N**

2 P731 Capitaneus
Pendant
Head of the tribe in the ages of darkness, long since lost to the mists of time. **N**

3 P11 Double Axe
Pendant
Barbarian warlord's professional trade tool.

4 P686 Black Trinity Trident
Neck Thong
The three-pronged fork of the demons, signifying the wearer's intent to cast darkness over all before him.

5 P709 Satan's Key To Hell
Pendant
The master of evil and temptation seduces you into the ways of sin, with unfettered access through the gates of The Underworld.

6 P618 Osbourne's Cross
Pendant
Sign of a priest of darkness; with black enamel.

7 P685 Flaming V
Neck Thong
The iconic instrument of the rock and metal axeman is totally on fire! On black leather thong.

8 P710 Death Tally Ingot
Pendant
The seasoned warrior, symbolising the taking of life in battle. Features black enamelled detail and a modelled sword encapsulated beneath a smoky transparent enamel.

9 P617 Black Knight's Cross
Pendant
Awarded for dastardly deeds; with trans black enamel, with black curb chain.

10 P8 Celt's Cross
Pendant
The compass symbolising the virtues of Chaos.

11 P623 Pentagratiion
Pendant
Magically intoned icon of power: On a black curb chain.

12 P616 Kaspar's Axe
Neck Thong
A heavy blade to swathe through the hordes.

13 P625 Dragon Skull
Pendant
Primitive ferocity unleashed.

14 P296 Reaper's Arms
Pendant
Harvester of Sorrow and the badge of fate.

15 P622 Birth Of A Demon
Pendant
The skull of an emerging nightmare.



1
P730
Bushido

2
P731
Capitaneus

3
P11
Double Axe

4
P686
Black Trinity
Trident

5
P709
Satan's Key
To Hell

6
P618
Osbourne's
Cross

7
P685
Flaming V

8
P710
Death Tally Ingot

9
P617
Black Knight's Cross

10
P8
Celt's Cross

11
P623
Pentagratiion

12
P616
Kaspar's
Axe

13
P625
Dragon Skull

14
P296
Reaper's Arms

15
P622
Birth Of
A Demon



16
 P338
 Bindrune Hammer



17
 P577
 Amber Dragon
 Thorhammer



18
 P696
 Thor's Hammer
 Amulet



19
 VAP2
 Mjollnir



20
 P146
 Choastar

21
 P620
 Skull Of Azrael



22
 P190
 The Lost Soul



23
 P687
 Helm Of Awe
 Ravenskull

**16 P338
 Bindrune Hammer**
 Pendant
 Viking Thor's Hammer, with
 runes commanding energy,
 courage, virility and conquest.

**17 P577
 Amber Dragon
 Thorhammer**
 Pendant
 A classic, ornate and highly
 intricate pagan amulet of power
 and protection, fit for a high
 ranking Saxon or Viking leader,
 set with polished, translucent,
 30 million year old amber.
 On a 21" trace chain. †

**18 P696
 Thor's Hammer
 Amulet**
 Pendant
 An amulet to Thor, to wear for
 protection, strength, healing and
 fertility. On 18" chain.

**19 VAP2
 Mjollnir**
 Pendant
 Thor's magical war-hammer.

**20 P146
 Chaostar**
 Pendant
 The compass symbolising
 the virtues of Chaos.

**21 P620
 Skull Of Azrael**
 Pendant
 The Demon awakes.

**22 P190
 The Lost Soul**
 Pendant
 The pitiful tortured
 remains of a hapless nobody.

**23 P687
 Helm Of Awe Ravenskull**
 Neck Thong
 This raven's skull has been engraved
 upon its head with the Icelandic
 stave symbol, 'Aegishjalmur'. On
 black square leather thong.

Earrings

ALCHEMY
England · 1977

Model is wearing :

P740 Wounded Love Choker
E365 Wounded Love Earrings
R199 The Dogaressa's Last Love Ring

Model : **Dani Divine**

www.facebook.com/danidivinemodel

All earrings are cast and hand-made in fine English pewter many with additional high quality crystals, Swarovski Elements and other components. Ear-wires are silver plated; Studs have surgical steel posts and plastic scroll backs. Earrings are sold singly unless indicated in pairs.

Visit our website www.alchemyengland.com
for additional views of all Earrings.



For more information behind Alchemy's arcana of subjects, relating to products, symbols, designs and very much more, see "Further Information" on page 3.



1
E365
Wounded Love



2
E364
Deadskull



3
E367
Wings Of Eternity



4
E363
Sorrow Cross



5
E346
Elizabethan



6
E336
Serpent's Eye



7
E347
Bacchanal Rose



8
E354
Amourankh



9
E310
Marie Antoinette



10
E273
Queen Of The Night



11
E351
Seraph Of Light



12
E289
Westenra Spica



13
E315
She Walks In Beauty

1 E365
Wounded Love
Dropper Earrings (pair)
A gaping hole is left where there was once a dark and mysterious romance; black pewter rose stud with heart dropper. See page 5 for matching choker P740. **N**

2 E364
Deadskull
Dropper Earrings (pair)
The desiccated remains of a former human being; pewter skulls suspended by fine chain. **N**

3 E367
Wings Of Eternity
Stud Earrings (pair)
From the symbol of everlasting life and love, the delicate Baroque-laced wings drip with Swarovski crystal promise. With matching necklace P748, page 4. ‡ **N** **◆**

4 E363
Sorrow Cross
Stud Earrings (pair)
The black cross urdee of abject mourning; black enamel cross with fine black chain. **N**

5 E346
Elizabethan
Stud Earrings (pair)
A symbol of a condemned and secret love from the age of Shakespeare. With suspended Swarovski amethyst heart crystals. See all matching Elizabethan items on page 35. ‡ **◆**

6 E336
Serpent's Eye
Stud Earrings (pair)
A serpent with sacred healing powers, offset with a red abalone snake-eye and dropper. See page 11 for matching necklace P688. ‡

7 E347
Bacchanal Rose
Stud Earrings (pair)
A romantic motif concealing a secret libertine passion for wine and sensual pleasures; with black acrylic roses & Swarovski crystals. Matching necklace P700 (p.10). ‡ **◆**

8 E354
Amourankh
Stud Earrings (pair)
An elemental symbol of everlasting love. With Swarovski crystals & black enamelled heart studs. ‡ **◆**

9 E310
Marie Antoinette
Dropper Earrings (pair)
Miniature guillotine blades, bearing the last traces of aristocratic life; with Swarovski Siam crystals. ‡ **◆**

10 E273
Queen Of The Night
Stud Earrings (pair)
The epitome of wickedness. A Swarovski crystal-heavy pair of Baroque earrings matching their sister necklace - P503, (p.13). ‡ **◆**

11 E351
Seraph Of Light
Stud Earrings (pair)
The Seraphim, the celestial angels ordained to bestow charity and to protect God's throne. Pale pink cabochon and with a matching Swarovski crystal dropper. Matching necklace on (p.9). ‡ **◆**

12 E289
Westenra Spica
Dropper Earrings (pair)
Complementing Lucy Westenra's post-Whitby jewel set. For matching choker, see P593, page 8. ‡ **◆**

13 E315
She Walks In Beauty
Droppers Earrings (pair)
Lord Byron's lamentable words for an unknown lover; complementing the P640 necklace (p.7); with etched brass, cabochons & Swarovski crystals. ‡ **◆**

◆ Made with -
SWAROVSKI ELEMENTS

Earrings are approx. 85% of actual size.

‡ Specified crystal colours are subject to availability and may be substituted.



1
E9
Skeleton

2
E271
Mirror Of
The Soul

3
E272
Bleeding
Heart

1 E9
Skeleton
Dropper Earrings (pair)
It all comes down to this. The last
remains of master and slave alike.

2 E271
Mirror Of The Soul
Stud Earrings (pair)
The dark, gothic heart
reveals death within.

3 E272
Bleeding Heart
Stud Earrings (pair)
Dripping with bloody Swarovski
crystals, betraying the emotional
grief inside. With matching
necklace - P550, (p.11). †

7 E314
Ivy League
Dropper Earrings (pair)
The three skulls of ancient
wisdom sit sagely upon
each ivy-adorned ear hoop.

8 E286
Bestia Regalis
Stud Earrings (pair)
Dramatically elegant regal beasts,
articulated to attract enviable
attention; with Emerald Swarovski
crystals. Matching pendant - P577,
(p.12). †

9 E264
Empress Eugenie
Stud Earrings (pair)
After the rare, massive blue heart
diamond, which legend says once
belonged to the empress consort
of Napoleon III (1852-1870),
before it was 'discovered' by
Cartier in 1908; with Swarovski
blue heart crystals. †
With matching necklace - P531,
(p.18).

4
E318
Eventide

6
E350
Empyrean Eye:
Tears From
Heaven

5
E333
Black Raven

4 E318
Eventide
Dropper Earrings (pair)
Seductively fluttering about the
mother of pearl moon, these
bats match both necklace P655
(p.15) & bracelet A99 (p.50); with
Swarovski crystals. †

5 E333
Black Raven
Dropper Earrings (pair)
Dark and sultry companions
make sure your admirers do not
underestimate your character.
Companion pendant - P193, (p.20).

10 E291
Dark Desires
Stud Earrings (pair)
A black rose and Swarovski
crystal tear of fated love. †

11 ULFE22
Devil Heart
Stud Earrings (pair)
Love, is sinful, naughty and oh,
so much fun! With translucent
red enamelled heart & Swarovski
crystal highlights. †
Matching items; pages 27 (ULFP20),
40 (ULFR6) & 62 (ULFHSC1).



6 E350
**Empyrean Eye:
Tears From Heaven**
Stud Earrings (pair)
The eye of God, shedding tears
of grief for humanity as he regards
the world from the highest
firmament. With striking 'Aurore
Boreale' Swarovski crystals. †
Matching pendant - P712, (p.9).

12 ULFE20
Black Cherry
Stud Earrings (pair)
The stones within each succulent
red cherry are horribly deceptive!
Pewter & 2 colour enamel earrings.
Companion necklace - ULFP19,
(p.27).



13 ULFE15
El Corazon
Dropper Earrings (pair)
Flight of the heart; pewter winged
earrings carry blue heart Swarovski
crystal droppers. †

14 ULFE19
The Devil's Gretsches
Dropper Earrings (pair)
The crossroads -sell your soul
to the Devil! Pewter devil-heads
hold trans enamelled & Swarovski
crystalised guitars. †



Cuff Studs



15
E349
Uncle Albert's
Timepiece

16
E247
Chaosium

17
E194
Parler

18
E212
Coeur Noir

19
E223
Diamond Pall

21
E278
Mortal Remains

20
E196
Pentagram

**15 E349
Uncle Albert's
Timepiece**
Cuff Stud Earring (single)
The perfect miniature, 13-hour
Lunar time fob watch and its
accoutrements from the Victorian
era; two-tone copper & pewter
with glass imitation watch face. ‡
With matching choker - P729,
(p.24).

**16 E247
Chaosium**
Cuff Stud Earring (single)
A hematine cabochon, chaos
-arrows stud, with shackled cuff. ‡

**17 E194
Parler**
Cuff Stud Earring (single)
In the style of the great
C. 14th cathedral architect.

**18 E212
Coeur Noir**
Cuff Stud Earring (single)
Fettered, dark passion, displayed
by the enamelled black heart.

**19 E223
Diamond Pall**
Cuff Stud Earring (single)
Swarovski crystal-rich
afterlife fetter. ‡ ♦



**20 E196
Pentagram**
Cuff Stud Earring (single)
Mystical seal of success.

**21 E278
Mortal Remains**
Cuff Stud Earring (single)
Traces of human existence
cling desperately to life.

Model is wearing :

P712 Empyrean Eye Necklace
E350 Empyrean Eye Earrings
P711 Crystal Heart Pendant

Model : **Mahafsoun**
www.facebook.com/MahafsounArt

♦ Made with -
SWAROVSKI ELEMENTS

Stud Pairs



1
E342
Mortuarium



2
E359
Rabeschadel



3
E332
Heart's Blood



4
E76
Death Studs



5
E525
Matins



6
E279
Whitby Wyrn



7
ULFE4
Swallows



8
ULFE1
Bow Belles



ALCHEMY
England · 1971

Model is wearing :
A78 Elizabethan Bangle
P738 Elizabethan Choker
E366 Elizabethan Earstuds

Model : Dani Divine
www.facebook.com/danidivinemodel

‡ Earrings are approx. 90 % of actual size.
† Specified crystal colours are subject to availability and may be substituted.

Elizabethan



E366 Elizabethan Cross
Stud Earrings (pair)
From Robert Dudley's original, censored design for the decorative moulding above the North entrance to Kenilworth Castle, in honour of his secret love.
Shown here with matching Choker P738, Necklace P749, Ring R156, Bangle A78 & Alternative stud earrings E346. ‡ N ♦



- 1 **E342 Mortuarium**
Necklace
Skulls, staring deeply into the oblivion of a long-past mortal existence.
- 2 **E359 Rabeschadel**
Stud Earrings (pair)
The great black bird, famous for its prophetic powers, being Odin's messengers and capable of foretelling death. N ‡ ♦
- 3 **E332 Heart's Blood**
Stud Earrings (pair)
Swarovski crystals glitter just under the surface of the clear, blood red enamel. (To match E329 earwrap). ‡ ♦
- 4 **E76 Death Studs**
Stud Earrings (pair)
Miniature pewter skull studs, for the discreet fatalist.
- 5 **E252 Matins**
Stud Earrings (pair)
The name of the night prayer service in the Roman Catholic and Eastern Orthodox churches and the time when bats are out to play! ‡ ♦
- 6 **E279 Whitby Wyrn**
Stud Earrings (pair)
The image of an English legend; with surgical steel posts.
- 7 **ULFE4 Swallows**
Stud Earrings (pair)
A pair of tattoo style swallow stud earrings.
- 8 **ULFE11 Bow Belles**
Stud Earrings (pair)
Stylish and cute skull & bow Swarovski crystal earstuds. ‡ ♦
- 9 **E343 Skully**
Stud Earrings (pair)
The boneheaded simpleton confounds any curious onlooker.
- 10 **E186 Batstuds**
Stud Earrings (pair)
Discreet aural accents for the nocturnal hunter.
- 11 **E339 Black Rose Stud**
Stud Earrings (pair)
The alchemical mystery personified by this impossibly rare flower. (To match E329, or E276 earwraps).
- 12 **E147 Alchemist Studs**
Stud Earrings (pair)
Miniature Alchemist skulls for Acolytes incognito.
- 13 **E338 Love's Blossom**
Stud Earrings (pair)
Sparkling red heart Swarovski crystals burst from the sprig of life. ‡ ♦
- 14 **E168 Pentanoir**
Stud Earrings (pair)
Hand polished pentagram noir studs with black enamel fill.
- 15 **E164 Pentagram Studs**
Stud Earrings (pair)
Miniature pentagrams for magical discretion.
- 16 **E258 Razor Studs**
Stud Earrings (pair)
The cutting edge of auricular fashion.
- 17 **E340 Dragon's Lure Head Stud**
Stud Earrings (pair)
The head from the dragon ear-wrap (E274).
- 18 **E353 Industrilobe**
Stud Earrings (Pair)
The quintessential cogwheel, personifying dynamic intellectual and intellectual progress.
- 19 **ULFE5 Live Now**
Stud Earrings (pair)
Live now. Die later; skull studs.
- 20 **E169 Black Widow Studs**
Stud Earrings (pair)
Worn to demonstrate contrition or predatory instincts.
- 21 **ULFE3 Tattoo Gun**
Stud Earrings (pair)
Scrolled tattoo gun stud earrings.
- 22 **ULFE21 Aces Up**
Stud Earrings (pack of 4)
How can anyone go wrong, when charmed with all the aces of the four suits? Enamelled suits studded with Swarovski crystals. With matching pendant ULFP21 (p.27). ‡ ♦

Ear-Wraps

Stud Ear Wraps

Created and developed by Alchemy from 2006, 'stud ear wraps' are a unique concept which decorate the whole ear, wrapping around it and fixing in place with a regular surgical lobe-stud. It is critical that the wrap can be formed to fit the ear properly, as no two ears are alike in size or shape. Alchemy's ear wraps are made of English pewter which is perfect for gently bending into shape. Cheap imitations will usually not bend, but snap.



For more information behind Alchemy's arcana of subjects, relating to products, symbols, designs and very much more, see "Further Information" on page 3.



1
E361
Osberg
Dragon



2
E355
Raven
Ear-Wing



3
E330
Crystal
Dragon



4
E309
Kraken



5
E296
The Harvester

6
E276
Rose Of
Passion



7
E345
Night Sky

8
E274
The Dragon's
Lure



11
E263
Sylvanus



9
E274B
Dragon's
Lure Black



10
E274L
Dragon's
Lure Left



5 E296
The Harvester

Stud Ear-Wrap (left)

The Grim Reaper's soul-taker and symbol for the end of mortal life. The scythe wraps over the ear with the blade hooking over the top, and a stud securing it from the skull at the bottom.

6 E276
Rose Of Passion

Stud Ear-Wrap (left)

'The unattainable black rose bleeds for what cannot be'; unique black pewter finish, studded with Swarovski white & 'blood drop' crystals. For companion pieces, see P560 (page 19). ‡

7 E345
Night Sky

Stud Ear-Wrap (left)

A colony of nocturnal bats arise against the stars, to silently invade the tranquility of the night; black pewter bats with Swarovski crystal 'stars' & dropper. ‡

8 E274
The Dragon's Lure

Stud Ear-Wrap (right)

Like a whispering shoulder devil, or a witch's familiar; this dragon, piercing through the earlobe, tempts the wearer into acts of shameful depravity.

1 E361
Osberg Dragon

Stud Ear-Wrap (left)

Inspired by the intricate, Norse Art wood carving decorating the great, 9th century Viking ship discovered beneath a burial mound in Norway. **N**

2 E355
Raven Ear-Wing

Stud Ear-Wrap (left)

Ready to impart its supernatural intelligence to its master, the black raven raffishly embraces the ear of its owner. Fastened by a surgical steel ear-post. **N**

3 E330
Crystal Dragon

Stud Ear-Wrap (right)

With dramatically outstretched wings, the writhing dragon flaunts its Swarovski crystal dropper. ‡

4 E309
Kraken

Stud Ear-Wrap (left)

Enveloped by overwhelmingly powerful and limber tentacles from the deep.



12
E335
Cut Throat



13
E287
Passion



14
E234
Temptation



15
E329
Bed Of
Blood Roses



16
E344
Chained-Love
Rose

9 E274B
Dragon's Lure Black
Stud Ear-Wrap (right)
Noir version of the now immortal dragon wrap.

10 E274L
Dragon's Lure Left
Stud Ear-Wrap (left)
A matching, left-ear version of the infamous dragon wrap.

11 E263
Sylvanus
Stud Ear-Wrap (right)
In Roman mythology, Sylvanus is god of the woods. This ornate, baroque ear-covering is supported by a chain behind the ear; Swarovski Siam crystals. †

12 E335
Cut Throat
Stud Ear-Wrap (left)
It's finesse and gracefulness belies its deadly potential with trickling drops of Swarovski crystal. †

13 E287
Passion
Stud Ear-Wrap (left)
A bramble of thorns entangles the ear, weeping tears of Swarovski crystal blood; see also pages 19 (P530), 42 (R167) & 50 (A80) for coordinating items. †

14 E234
Temptation
Stud Ear-Wrap (left)
The serpent of Eden twists through and around the beguiled wearer's ear.

15 E329
Bed Of Blood Roses
Stud Ear-Wrap (left)
The poetic tragedy of a bleeding heart; with black roses and Swarovski crystals below the enamelled heart. †
Matching necklace P630 (p.10); & watch AW20 (p.57).

16 E344
Chained-Love Rose
Stud Ear-Wrap (left)
An elegant, but distinctly gothic display of sentiment for those with a Medieval sense of romance. With a fine black curb chain around the back of the ear. †



Model is wearing :
A Murder of Crows Necklace P677
Flocking Ravens Bracelet A101
Raven Ear-Wing Ear Wrap E355

Model : Mahafsoun
www.facebook.com/MahafsounArt

Single Studz

1
E357
Bushido



2
E341
Skellimation



3
E313
Longbone



4
E256
Hang Man's
Noose



5
E210
Morticia



6
E221
Spike Cuff



7
E175
Wyverex
Dragon



8
E130
Rose Thorn
Cross



- 1 **E357 Bushido**
Single Dropper
The seven virtues of the samurai warrior, engraved down the length of the katana's blade. **N**
- 2 **E341 Skellimation**
Single Stud Earring
This devil's fool flaunts the sobriety of mortal life; animated skeleton ear stud.
- 3 **E313 Longbone**
Single Stud Earring
A discreet yet disturbingly sinuous collection of human ossuary.

- 4 **E256 Hang Man's Noose**
Single Stud Earring
The most squalid and degrading of ends to the life of a mortal.
- 5 **E210 Morticia**
Single Stud Earring
Amethyst Swarovski crystal droplet suspended from the talons of a volitant bat. ‡ ♦
- 6 **E221 Spike Cuff**
Single Stud Earring
Piercing statement.
- 7 **E175 Wyverex Dragon**
Single Dropper
Rare Medieval beast of proven origins and powerful influence.
- 8 **E130 Rose Thorn Cross**
Single Dropper
An Alchemical cross of rose thorns surmounted by the skull of the Master. With Swarovski crystal. ‡ ♦



ALCHEMY
England · 1977

Model is wearing :
E221 Spike Cuff Stud;
E362 Doom - Faux Stretcher;
Alchemy England Apparel T-shirt
Model : John
Courtesy of : Alchemy England Apparel

9
E308
Serket



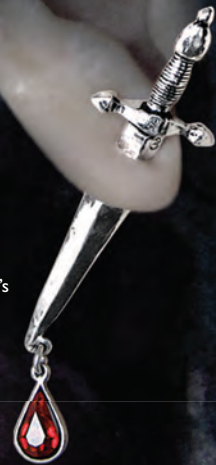
10
E280
Impalare
Cross



11
E348
Shredder's
Axe



12
E257
Cesare's
Veto



9 E308
Serket
Faux Stretcher Earring (single)
Symbol of the eponymous,
ancient Egyptian goddess -
protector against scorpion stings.

10 E280
Impalare Cross
Faux Stretcher Earring (single)
Pierced by the enduring symbol
of sacrifice; black-enamelled
cross piercing the earlobe, with
surgical steel post.

11 E348
Shredder's Axe
Faux Stretcher Earring (single)
An undeniably aggressive
instrument of speed and passion,
impaling the ear of the dedicated
metalhead.

12 E257
Cesare's Veto
Faux Stretcher Earring (single)
The Cesare Borgia's Florentine
solution to all political problems.
With Swarovski crystal. †

13 E368
Thunderstick
Faux Stretcher (single)
The richly decorated Nordic
Thor's hammer empowers
its wearer both visually and
spiritually. **N**

14 E362
Doom Faux Stretcher
Faux Stretcher (single)
The black face of ruin glares out
from a red hell-hole within the
spiked stud. **N**

15 E356
Magic Ram's Horn
Faux Stretcher (single)
Intoned with outrageous
Crowleyan symbolism and ritual
Pagan intent.

16 E319
The Alchemist Horn
Faux Stretcher (single)
7mm curved horn with Alchemist
skull end.

17 E320
Tomb Skull Horn
Faux Stretcher (single)
7mm curved horn with plain
skull end.

18 E325
Dragon's Orb Claw
Faux Stretcher (single)
7mm dragon's talon with the end
of an 8mm amethyst crystal orb,
clutched by dragon's claws. ‡

19 E323
Tomb Skull Spike
Faux Stretcher (single)
9mm straight spike with plain skull
end

20 E321
Wraith Spine
Faux Stretcher (single)
7mm curved vertebrae with demon's
skull end

21 E324
Tor Dragon
Faux Stretcher (single)
8mm spine'd tail with dragon's head
end.

22 E322
Femur Bone
Faux Stretcher (single)
4mm thigh bone.

FAUX EAR STRETCHERS

Polished pewter, surgical steel post ear studs for regular pierced ears, with special and thoroughly convincing backs appearing exactly like a stretched ear!



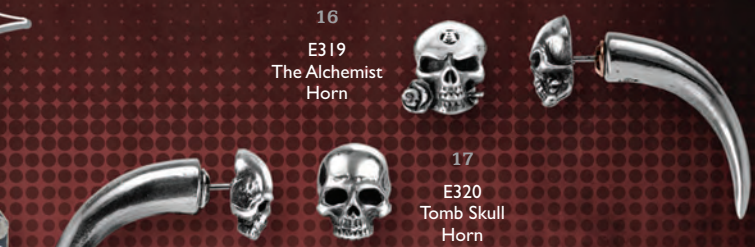
13
E368
Thunderstick



14
E362
Doom
Faux
Stretcher



15
E356
Magic Ram's Horn



16
E319
The Alchemist
Horn



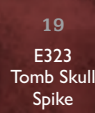
17
E320
Tomb Skull
Horn



18
E325
Dragon's
Orb Claw



20
E321
Wraith Spine



19
E323
Tomb Skull
Spike



21
E324
Tor Dragon



22
E322
Femur Bone

ALCHEMY

England · 1977

Model is wearing -

E333 Black Raven Earrings

R205 Black Consort Ring

P734 Black Talon Pendant

Model : Lady Amaranth

Rings

Alchemy Rings are hand cast & made in England from fine English pewter and in many cases including Swarovski Elements, other high quality crystals and additional high quality materials and finishes.

Visit our website www.alchemyengland.com for additional views of all Rings.

For more information behind Alchemy's arcana of subjects, relating to products, symbols, designs and very much more, see "Further Information" on page 3.

INTERNATIONAL SIZE GUIDE

English:	L	N	Q	T	W	Y	Z1
American:	6	7	8½	9½	11	12	13
European:	12	15	18½	21	23	27	28
German:	1.7	1.8	1.9	2.0	2.1	2.2	2.3
Japanese:	10	13	16	19	23	25	27

Alchemy's rings are available in various sizes. The sizes stated are intended as a guide only, and are **NOT** strictly an accurate indication of measurement.

DIAMETER RING GAUGE

To gauge your ring size using the circular guide, place a suitably sized existing ring over the size indicators here and choose the closest size to the inner circle.



LINEAR RING GAUGE

To gauge your ring size using the linear guide, wrap a 5mm wide X 10cm long (approx.) strip of paper around the required finger and mark the point of overlap with a pencil. Then lay flat against this linear guide.

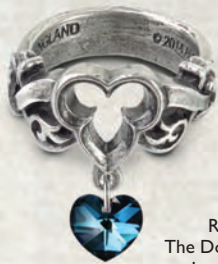
Z1 YW T Q N L



Linear Ring Gauge



1
R202
Amon-Ra



2
R199
The Dogaressa's
Last Love



3
R206
The Sophia
Serpent



4
R205
Black Consort



5
R156
Elizabethan



6
R134
Betrothal



7
R198
Bower Troth Ring



8
R145
In Memoriam



9
ULFR6
Devil Heart



10
R197
Flocking Raven



11
R193
Viperstone



12
R161
Victoria's
Glad-Rocks



13
R190
Starchaser



14
R192
Thorny Cross
Handspan Ring



1 R202 Amon-Ra
Ring
The ancient Egyptian god of creativity and fertility, astronomically related to the constellation of Aries. (Sizes: L, N, Q, T, W) ‡ ♦

2 R199 The Dogaressa's Last Love
Ring
A token of forlorn devotion from the Lady of the palace in Renaissance Venice; with suspended blue Swarovski crystal heart. (Sizes: L, N, Q, T) ‡ ♦
Companion bracelet A104 & Choker P726 (page 9).

3 R206 The Sophia Serpent
Ring
The Ouroboros, ancient Gnostic symbol of eternity, rebirth and the unity of everything, representing the sun and soul of the world. (Sizes: L, N, Q, T, W, Y) ‡ N ♦

4 R205 Black Consort
Handspan Ring
The majestic raven, wings outstretched, gliding alongside its adopted squire offering protection and guidance. (Sizes: N, Q, T, W, Y) N

5 R156 Elizabethan
Ring
Lord Dudley's lost sign of devotion; Swarovski crystal. (Sizes: L, N, Q, T) ‡ ♦
See the whole Elizabethan collection on page 35.

6 R134 Betrothal
Ring
A miniature rococo masterpiece of romantic metaphor, with the blood red enameled heart of passion. (Sizes: L, N, Q, T, W)
Companion bracelet; A89, (page 50).

7 R198 Bower Troth Ring
Ring
The lady's special, hidden sanctuary where she may enchant, charm and engage the object of her desires. (Sizes: L, N, Q, T) ‡ ♦

8 R145 In Memoriam
Ring
A silent and sombre dedication expressed in this polished black-enamel, Victorian mourning ring. (Sizes: L, N, Q, T, W)

9 ULFR6 Devil Heart
Ring
Love, is sinful, naughty and oh, so much fun! With translucent red enameled heart & Swarovski crystal highlights. (Sizes: N, Q, T) ‡ ♦
See companion necklace ULFP20, earstuds ULFE22, (page 27) & hairscrew ULFHSCI (page 62).

10 R197 Flocking Raven
Ring
Escaping the flock, the raven frantically breaks away and takes flight, for Odin... (Sizes: L, N, Q, T, W)
Companion necklace P677 (page 7) & bracelet A101 (page 50).

11 R193 Viperstone
Ring
The serpent sinks its fangs into an energising carnelian, to suffuse its properties of passion and desire. (All sizes) ‡

12 R161 Victoria's Glad-Rocks
Ring
The jewel to be seen in, on an especially dark and different night; with Swarovski crystals. (Sizes: L, N, Q) ‡ ♦

13 R190 Starchaser
Handspan Ring
Gliding gracefully between the clouds, the fantastical creature flies to catch the stars from the sky. Adjustable split ring, partly spanning three fingers.
Adjustable Sizes:
L - N, (Small), Q - T, (Med) ‡ ♦

14 R192 Thorny Cross Handspan Ring
Handspan Ring
A devotional, tangled trellis of crystal blood-speckled passion and a median radiance of light. Swarovski studded ring spanning 3 fingers. (Sizes: L, N, Q, T) ‡ ♦



1
ULR1
Love/Hate



2
R123
Broken Heart



3
R183
Vis Viva



5
R167
Passion Ring



6
R72
Caput Mortem



7
R105
Shadow
Of Death



8
R71
Agla



10
R124
Angel's Eye



11
R23
Roseus
Pentagram



12
R86
Draconis
Celtica



13
R154
Wyverex Dragon
Signet Ring

The Seal of Metatron, including the pentagram engraved in the back of the crystal eye.



15
R44
Dr.Von Rosenstein's
Induction Principle Ring



16
R149
Hi-Voltage Toric
Generator Ring



17
R200
Quanta Mechanica
Cosmonatology Ring



18
R188
Britannia Gem



20
R147
GMT Feromonic
Field Detector



21
R73
Deus Et Natura



22
R178
Automaton's Eye

1 ULR1 Love/Hate

Ring
Tattoo style "Love / Hate" script, enameled in red & black and featuring engraved inner shank. (Sizes: L, N, Q, T)

2 R123 Broken Heart

Ring
Double-sided ring of love, pain and sorrow, featuring an enameled heart obscuring a deep-set skull. (Sizes: L, N, Q, T)

3 R183 Vis Viva

Ring
The living power; overwhelming energy and the force of life encircles and liberates the wearer; with Swarovski crystals. †
See companion bracelet, (page 50). Adjustable Sizes: Small (L - N), Med (Q - T) & Large (W - Y)

4 R120 Absinthe Fairy Spirit Crystal

Ring
A Swarovski emerald pond of illusion and creation. (Sizes: L, N, Q, T.) †

5 R167 Passion Ring

Ring
The tortuous thorns of self sacrifice bleed with tears of Swarovski crystal. Companion pieces: Pages 19 (P530), 37 (E287) & 50 (A80). (Sizes: L, N, Q, T) †

6 R72 Caput Mortem

Ring
Three deaths for the auspicious; one death's head for each mortal life. (Sizes: N, Q, T, W)

7 R105 Shadow Of Death

Ring
Large, deep burgundy, faceted Swarovski crystal mounted in a circle of ivy-grown skulls. (Sizes: L, N, Q, T) †

8 R71 Agla

Ring
Five magical talismans of profit and protection. The central Kabbalistic sigillum "Agla", stands for 'Thou art mighty forever O Lord', with the remaining four seals for love, memory, safety and peace. (Sizes: N, Q, T, W)

9 R36 Great Wish Ring

Ring
The Latin inscription 'MEUS OPUS MAGNUS' is the Alchemical spiritual wish for 'The complete fulfillment of life'. (Sizes: N, Q, T, W, Y)

10 R124 Angel's Eye

Ring
His deep, sapphire crystal eye is engraved with the pentagram from the seal of the archangel Metatron. (All sizes) †

11 R23 Roseus Pentagram

Ring
A classic black enamelled pentagram, highly polished & flanked with Alchemical roses of wisdom. (Sizes: N, Q, T, W, Y)

12 R86 Draconis Celtica

Ring
The head of a dragon lurks beneath this pool of a Celtic spring. (All sizes)

13 R154 Wyverex Dragon Signet Ring

Ring
Guardian of a vampire's nest; dragon encapsulated in a polished black enamel. (Sizes: Q, T, W, Y)

14 R152 Vamp Ring

Ring
Subtle indication of a vampire's affinity; with Swarovski crystal fang. (Sizes: L, N, Q, T.) †

4

R120
Absinthe Fairy
Spirit Crystal



9

R36
Great Wish Ring



14

R152
Vamp Ring



19

R24b
Eye Of The Devil



Model is wearing :

- Absinthe Fairy Spirit Ring R120
- La Belle Esprit Necklace P727
- Queen Of The Night Earrings E273
- La Fleur de Baudelaire Bangle A69

Model : Mahafsoun
www.facebook.com/MahafsounArt



23

R168
Venetian Vanity



24

R187
Dee's Book
Of Angel Magic



15 R44
Dr. Von Rosenstein's
Induction Principle Ring

Ring
In pewter and solid brass,
an authentic reproduction of
Dr. Von Rosenstein's indispensable
key to the induction matrix.
(Sizes: N, Q, T, W, Y)

16 R149
Hi-Voltage Toric
Generator Ring

Ring
Unusual, early but very highly
efficient power generator to
augment the energy demands
of Victorian hi-tech gadgets.
(Sizes: N, Q, T, W, Y)

17 R200
Quanta Mechanical
Cosmonatalogy Ring

Ring
A rare and ingenious device for
quantifying the duration of an
individual's transcendent life,
as well as calculating the precise
time of their corporeal death.
(All sizes)

18 R188
Britannia Gem

Ring
The sparkling splendour of the huge,
rich, Montana blue Swarovski crystal
is set into a suitably pompous lion's
head frame mount.
(Sizes: N, Q, T, W, Y) ‡ †

19 R24b
Eye Of The Devil

Ring
Sinister blood red crystal eye,
staring down any onlooker. ‡
(Sizes: N, Q, T, W, Y)

20 R147
GMT Feromonic
Field Detector

Ring
A scientific tuning device found
essential to gauge accurate settings
for the successful transposition of
bio-matter; with movable
dial indicator. (Sizes: N, Q, T, W)

21 R73
Deus Et Natura

Ring
The triumphant harmony of
Nature and The Creator. The
solid bronze Latin band says 'God
and Nature do not work together
in vain'. (Sizes: N, Q, T, W, Y)

22 R178
Automaton's Eye

Ring
A surviving, stand-alone animated
integrant of the advanced, life-sized
android from the famous workshops
of Ezekiel Rosenstein; C 1865.
3-tone pewter ring with opening
eye-lid exposing a realistic,
taxidermal eye. (Sizes: Q, T, W, Y)

23 R168
Venetian Vanity

Ring
Deception and illicit indulgence
hide behind the beguiling,
traditional Baroque mask of
the Carnevale; with Swarovski
crystals & translucent enamels.
(Sizes: L, N, Q.) ‡ †

24 R187
Dee's Book
Of Angel Magic

Poison Ring
The magnificent cover displays
the alchemist's glyph of the
mystical unity of creation and
opens to reveal a wealth of
secrets. Pewter with brass inlay.
Hinged, with magnetic catch.
(Sizes: N, Q, T, W)

◆ Made with -
SWAROVSKI ELEMENTS

**1 R204
Necrogram**

Ring
Communicating with the dead; the intelligence of this skull transcends its apparent vacancy. (Sizes: Q, T, W, Y, Z1) **N**



1
R204
Necrogram

**2
R207
Desolation**



**3
R201
Rabeschadel**



**2 R207
Desolation**

Ring
The black winged-skull of survival arises from the ashes of destruction. (Sizes: N, Q, T, W, Y) **N**

**3 R201
Rabeschadel**

Ring
An authentically detailed raven's skull, in polished pewter and set upon a split ring shank. (Sizes: Q, T, W, Y, Z1)

**4
R171
Thor's Runehammer**



**5
R50
Celtic Theurgy**



**4 R171
Thor's Runehammer**

Ring
With runes for 'Blood' & 'Thunder'. (Sizes: Q, T, W, Y, Z1)

**5 R50
Celtic Theurgy**

Ring
Supernatural powers of the pentagram under Celtic influence. (Sizes: N, Q, T, W)

**8
R176
Hell's Doorman**



**9
R175
Pentagrations**



**10
R16
Demi Alchemist**



**11
R174
Ruinaton Skull**



**6 R99
Chaos Signet**

Ring
Device of the infamous, maelstromic arrows; black enamel. (Sizes: Q, T, W, Y)

**7 R196
Cross Of Iron**

Ring
Iron nail-heads reinforce the Germanic cross, intensifying its martial significance. (Sizes: Q, T, W, Y, Z1)

**8 R176
Hell's Doorman**

Ring
Ram-horned guardian of the gates of the abyss. (Sizes: Q, T, W, Y, Z1)

**9 R175
Pentagrations**

Ring
Magically intoned icon of power. (Sizes: Q, T, W, Y)



**10 R16
Demi Alchemist**

Ring
Classic portrayal of the Alchemist, with black rose. (Sizes: N, Q, T, W)

**11 R174
Ruinaton Skull**

Ring
Defiance on the face of death. (Sizes: Q, T, W, Y, Z1)

**12 R122
Omega Skull**

Ring
The Alchemist engraved with his total, all-powerful esoteric knowledge. (Sizes: N, Q, T, W, Y)

**13 R195
Viking Virility Runering**

Ring
The two bindrunes are made from Uruz and Teiwaz, for the fighting strength of a warrior, and Inguz and Gebo for a virile union and partnership. (Sizes: Q, T, W, Y, Z)

**14 R6
Death Ring**

Ring
The famous blank, stark expression of the face of death. (Sizes: N, Q, T, W, Y)

**15 R173
Runeband**

Ring
Nordic runes recite the mantra, 'Poetry is in Battle'. (Sizes: Q, T, W, Y, Z1)



Buckles

ALCHEMY
 England · 1971

16
 L1B
 Leather Belt Strap



Alchemy buckles are all cast in solid English pewter, and are designed to be snapped onto standard 1½" (38mm) belt straps.

Visit our website www.alchemyengland.com for additional views of all Buckles.

For more information behind Alchemy's arcana of subjects, relating to products, symbols, designs and very much more, see "Further Information" on page 3.

17
 B100
 Rabeschadel



18
 B99
 Warband



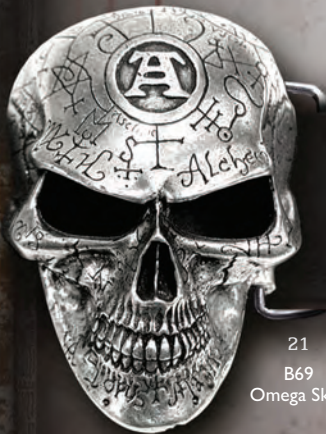
19
 B96
 Thunderhammer



20
 B66
 Gramilion



22
 B8
 The Alchemist



23
 B93
 Nevermore Skull



21
 B69
 Omega Skull

**16 L1B
 Leather Belt Strap**

Belt Strap
 High quality, 1½" (38mm) wide, black split leather belt straps with press-stud fastenings to accept any jeans-belt buckles: in a choice of three waist sizes; S (28" - 34"), M (34" - 40"), L (40" - 44").

**17 B100
 Rabeschadel**

Buckle
 The great black bird is famous for its prophetic powers, being Odin's messengers and capable of foretelling death.

**18 B99
 Warband**

Buckle
 The rune-cut battle shield and trusted sword of a Viking leader.

**19 B96
 Thunderhammer**

Buckle
 The Norse god Thor's mighty weapon of utter destruction, Mjolnir.

**20 B66
 Gramilion**

Buckle
 Contesting, Draconic beasts refute ultimate possession of the black Stone of Wisdom. †

**21 B69
 Omega Skull**

Buckle
 The enigmatic and infamous Alchemist, engraved with the wisdom of ancients.

**22 B8
 The Alchemist**

Buckle
 The original Philosophus Magus portrait; set with a black rose.

**23 B93
 Nevermore Skull**

Buckle
 A study in destinal mortal reflection and a solemn reminder of life's hopeless ephemerality.

ALCHEMY

England · 1977

1
ULB7
Russian Roulette



2
B74
Wulven



3
ULB3
Tattoo Gun



4
B85
Anima Machinato Futuris



**1 ULB7
Russian Roulette**

Buckle
Are you man enough to play the deadly game? Let fate make your difficult choices for you, with the aid of this one-bullet, revolving gun chamber.

**2 B74
Wulven**

Buckle
'Of the Wolf'... the children of the night. With translucent midnight-blue enamel.

**3 ULB3
Tattoo Gun**

Buckle
Authentic, almost life-size, totally 3D engineered & sculpted tattoo gun buckle; with engraved copper-plate scroll and brass rod components. The reverse has been 'tattooed'.

**4 B85
Anima Machinato Futurus**

Buckle
Latin, meaning 'mechanised life to come'; the future of the human race. Pewter cross-section of a human skull, showing brass and copper internal components, in traditional style.

**5 B24
Nosferatu's Hand**

Buckle
The withered, yet living hand of the infamous undead, insensitively embraces the strap; in dark pewter with polished highlights and red Swarovski cabochon ring. †

**6 B37
Ossa Ravenhead**

Buckle
Magnificent raven-winged helmet of the Viking deity of the warrior cult.

**7 B13
The Alchemist Rex**

Buckle
The dominant king Alchemist skull; highly polished cranium and solid rose.

**8 B83
The Vulture's Eye**

Buckle
Edgar Allan Poe's 'pale blue vulture-like eye' in "The Tell-Tale Heart"; with black onyx and enamel eye.

**9 B95
Ram's Skull**

Buckle
Sacrifice for a pagan.

**10 B75
Letter Of Marque**

Buckle
An official, Royal warrant to 'privateers'; an 18th century license to kill!

**11 B88
No Evil**

Buckle
Just do it - life and death; hear, speak and see NO EVIL!



5
B24
Nosferatu's Hand



6
B37
Ossa Ravenhead



7
B13
The Alchemist Rex



8
B83
The Vulture's Eye



9
B95
Ram's Skull



10
B75
Letter Of Marque



11
B88
No Evil

Model is wearing:
Tattoo Gun Buckle: **ULB3**
(additional jewellery models own)

Photo : **Stu Williamson**
www.stuwilliamson.com

Armwear

Alchemy's Armwear items are all hand cast in Fine English Pewter, many with additional high quality crystals, Swarovski Elements and other components.


Visit our website www.alchemyengland.com for additional views of all Armwear.

Sizes:

Bracelets are mostly 'One Size, adjustable', covering from Small to Large. However, where fixed sizes are indicated, these are divided into three approximate categories:

SMALL: approx. 6"-7½" (153-191mm) circumference;
MED: approx. 7"-9" (178-229mm) circumference;
LARGE: approx. 7½"-9½" (191-242mm) circumference.

When supplemented with 'Adj.', a bangle has some degree of adjustment, usually achieved by gently squeezing open or closed to fit.

 For more information behind Alchemy's arcana of subjects, relating to products, symbols, designs and very much more, see "Further Information" on page 3.

Model is wearing :

P738 Elizabethan Choker
R156 Elizabethan Ring
R198 Bower Troth Ring
A78 Elizabethan Bangle
E366 Elizabethan Cross Earrings
P702 Herz Leben Pendant
A41 In Nomine Patrie Bangle

Model : La Esmeralda

<http://modellaesmeralda.blogspot.de/>

www.facebook.com/Alternative.Model.La.Esmeralda

ALCHEMY

England • 1971

Armwear is shown smaller than actual size.

 Made with - SWAROVSKI ELEMENTS

† Specified crystal colours are subject to availability and may be substituted.

* **CAUTION:** Repeated over-bending of bangles will cause metal to fracture.



1
A41
In Nomine Patrie



6
A108
Viennese Nights



2
A104
The Dogressa's
Last Love



7
A106
Bacchanal Rose

3
A83
Black Romance



8
A78
Elizabethan

4
A69
La Fleur de
Baudelaire



5
A97
Pirate Princess



1 **A41
In Nomine Patrie**

Bangle
'In the name of The Father, The Son and The Holy Ghost'; an amethyst Swarovski crystal-mounted, Latin-inscribed bangle of the high church.
Size: Medium Adj. * † †

2 **A104
The Dogressa's
Last Love**

Bracelet
From the rich regalia of office, a last token of forlorn devotion from the bereaved Lady of the Palace in Renaissance Venice.
With large Swarovski oval and suspended blue heart crystals.
See matching ring & choker (page 9). One size Adj. * † †

3 **A83
Black Romance**

Bangle
Wear your heart on your sleeve - a black heart, wrapped around your wrist by spreadeagled wings of ethereal flight.
Companion necklace (P610), (page 16.) Shown with reverse view showing modelled wings.
Sizes: Small & Large *

4 **A69
La Fleur de Baudelaire**

Bangle
Paris' celebrated C.19th 'gothic' poet and visionary and champion of the supernaturally creative powers of absinthe; with Swarovski crystal.
With matching choker P517 on page 13. One size Adj. * † †

5 **A97
Pirate Princess**

Wrist Strap
A sexy and feisty flourish from the age of daring grandiloquence. Leather strap with adjustable fastenings & Swarovski crystals.
One size Adj. † †

6 **A108
Viennese Nights**

Bracelet
The quintessential creature of the night, fashioned in opulent Renaissance scrollwork defining the decadent streets of Europe's fabulous den of iniquity.

See matching necklace on page 10.
One size Adj. Adjusted by heart bead slider. N † †

7 **A106
Bacchanal Rose**

Bracelet
A sumptuous bracelet with a romantic motif hiding, or revealing, a secret libertine passion for wine and sensual pleasures; black roses for dark love and grape vines for vinous delights. Featuring black acrylic roses, Swarovski crystals & black ribbon.
Matching necklace P700 (page 10).
One Size Adj. Adjusted by heart bead slider. † †

8 **A78
Elizabethan**

Bangle
Robert Dudley's original design for the tracery molding above the North entrance to Kenilworth Castle for his great love, alas, never used; with Swarovski crystal hearts.
Elizabethan set can be seen on page 35. One size Adj. * † †

1
A101
Flocking Ravens



2
A96
Skull & Briar Rose



3
A105
Rabeschadel
Wriststrap



AS SEEN IN
VOGUE

4
A89
Betrothal



5
A61
Dead Man's Cuff



6
A80
Passion



7
A99
Eventide



8
A68
Curse Of Ezekiel



9
A88
Vis Viva



ALCHEMY
England · 1971

**1 A101
Flocking Ravens**

Bracelet

A circlet of ravens performs its calling, protects you and takes you to magical places; with Swarovski crystals.

Companion necklace P677 (page 7) & ring R197 (page 41).
One size Adj. ‡

**2 A96
Skull & Briar Rose**

Bracelet

A beautiful romance, turned to death and ashes. Pewter & black resin with double ribbon fitting.

One size Adj.
Adjusted by skull bead slider.

**3 A105
Rabeschadel
Wriststrap**

Wriststrap

The great black bird is famous for its prophetic powers, being Odin's messengers and capable of foretelling death. On adjustable leather strap.

**4 A89
Betrothal**

Hinged Bracelet

A rococo masterpiece of romantic metaphor, with the blood red enameled heart of passion; Swarovski crystal.

For matching ring, see R134, (page 41). One size Adj. ‡

**5 A61
Dead Man's Cuff**

Bangle

Bangle style bracelet inspired by traditional C.18th pirate-style decoration and 'dead man's skull'.

One size Adj. *

**6 A80
Passion**

Bangle

A tangled cuff of bloody thorns, encrusted with Swarovski crystal drops; complementing the equally empathetic P530 necklace (page 19), E287 earwrap (page 37) & R167 ring (page 42).

One size Adj. * ‡

**7 A99
Eventide**

Bracelet

A colony of bats flit amongst the crystal stars in their frantic attempt to reach the mother of pearl moon; with Swarovski crystals.

Companion necklace P655 (page 15) & earrings E318 (page 32). One size Adj. * ‡

**8 A68
Curse Of Ezekiel**

Hinged Bracelet

The Old Testament's prophet of horror, with his foretold rising of bones, coming to grisly fruition and taking a firm grip on the wearer, gripped by spring-action thumb joint.

One size Adj. A68 also Shown on wrist.

**9 A88
Vis Viva**

Hinged Bracelet

The living power; overwhelming energy and the force of life encircles and liberates the wearer; with Swarovski crystals.

Matching ring R183 (page 42). Shown with reverse view showing adjustable sprung fitting.
One size Adj. ‡



Model is wearing :

The Rabeschadel Collection A105, R201, P736

Model : Dani Divine - www.facebook.com/danidivinemodel

Armwear is shown smaller than actual size.

Made with - SWAROVSKI ELEMENTS

ARMWEAR | THE ALCHEMY ENGLAND COLLECTION 2015/16

Model is wearing :

- P734 Black Talon Pendant
- R204 Necrogram Ring
- R23 Roseus Pentagram Ring
- CL13 Empire Spur Gear Cufflinks
- GA1 Foundryman's Ring Cross Shirt Sleeve Band
- GA2 Keys To Progress Shirt Sleeve Band
- R147 GMT Feromonic Field Detector Ring
- R44 Dr.Von Rosenstein's Induction Principle Ring
- A15 Spectrostatic Nocturnium Bangle

Model : **Sebastian Black**

www.facebook.com/sebastian.black.artist

1 **A81**
**Mrs. Hudson's
 Cellar Keys**

Bracelet
 Matron of both house and workshop-laboratory, this, her bracelet made-up of some of the many technological access devices; with Swarovski crystal 'pearls'. One size Adj. †

2 **A100**
**The Black Baron
 Technician's Wingstrap**

Wriststrap
 A rare and wondrous legacy from the famed hero of early, roaring skies; 2-tone pewter on dark brown, leather strap. One size Adj.

3 **A15**
**Spectrostatic
 Nocturnium**

Bangle
 Early scientific instrumental band for controlling moonlight wavelength emulations; in antiqued pewter and solid brass. Shown with side view highlighting Finial Detail. Size: Medium Adj. ✖

4 **ULA4**
Pain Is Pleasure

Wriststrap
 Italian leather wriststrap with intricately sculpted tattoo gun & etched scrolls. One size Adj.

5 **ULA7**
Carpe Diem

Wriststrap
 Classic tattoo skull, dagger, roses & scroll wriststrap, bearing the eternal Latin legend "Carpe Diem"-"Seize The Day". One size Adj.

6 **ULA3**
Tattoo Gun

Wrist Chain
 Solid, 3-dimensional, twin tattoo guns bracelet on heavy link chain with engraved "UL13 INK" scrolls. One size Adj.

7 **ULA1**
Ace Of Dead Spades

Wriststrap
 Italian leather wriststrap with pewter & black-enamelled ace of spades plate, including raised, sculpted death's head. One size Adj.



1
 A81
 Mrs. Hudson's
 Cellar Keys



2
 A100
 The Black Baron
 Technician's Wingstrap



3
 A15
 Spectrostatic
 Nocturnium



7
 ULA1
 Ace Of Dead
 Spades

4
 ULA4
 Pain Is Pleasure



5
 ULA7
 Carpe Diem



6
 ULA3
 Tattoo Gun

Armwear is shown smaller than actual size.

† Made with - SWAROVSKI ELEMENTS



1
A105
Rabeschadel
Wriststrap



AS SEEN IN
VOGUE



2
A102
Gears of Aiwass



3
A98
Thunderhammer



4
A85
Pentagrations

Model is wearing :
 P731 Capitaneus Neck Thong;
 A102 Gears of Aiwass Wriststrap;
 A103 No Man's Land Bracelet;
 R171 Thor's Runehammer Ring
 Alchemy England Apparel T-shirt
 Model : John
 Courtesy of : Alchemy England Apparel

Armwear is illustrated at various sizes and are not to scale.



5
A109
Black Consort



6
A107
Thunder Torque



7
A51
Skull 'n' Bones Strap



8
A29
Vertebrae



9
A40
Runering
Dragon Strap



10
A93
Killing
Fields



11
A37
Pentagram
Gaelic Strap



12
A103
No Man's Land



- 1 **A105 Rabeschadel Wriststrap**
Wriststrap
The great black bird is famous for its prophetic powers, being Odin's messengers and capable of foretelling death. On adjustable leather strap.
- 2 **A102 Gears of Aiwass**
Wriststrap
Aleister Crowley's incorporeal intelligence and dictator of his transcribed and ultra-complex, sacred text, 'The Book of the Law'. On adjustable leather strap.
- 3 **A98 Thunderhammer**
Wriststrap
The Norse god Thor's mighty weapon of utter destruction, Mjolnir. On adjustable leather strap.
- 4 **A85 Pentagrangon**
Wriststrap
Magically intoned icon of power. On adjustable leather strap.
- 5 **A109 Black Consort**
Wriststrap
The majestic raven, wings outstretched, gliding alongside its adopted squire offering protection and guidance. On adjustable leather strap. **N**
- 6 **A107 Thunder Torque**
Bangle
This lordly, iconic torque bangle must be that of a Scandinavian or Saxon pagan noble, won, almost inevitably, by force. Copper-plated finial ends with inset hematite cabochons. Sizes: Small & Large. ‡ **N** *
- 7 **A51 Skull 'n' Bones Strap**
Wriststrap
The immortal badge of honour. On adjustable leather strap.
- 8 **A29 Vertebrae**
Hinged Bangle
The metallised spine of a vanquished predator, forms this hinged, articulated bangle; with safety chain. Size: Medium Adj. *
- 9 **A40 Runering Dragon Strap**
Wriststrap
The runes of genesis and the skeletal remains of a guardian-dragon. On adjustable leather strap.
- 10 **A93 Killing Fields**
Wrist Chain
Assembled from the sobering detritus of all-out war. Sizes: Small & Large.
- 11 **A37 Pentagram Gaelic Strap**
Wriststrap
Hand plaited, black leather wristband with pewter pentagram button-fastening. On adjustable leather strap.
- 12 **A103 No Man's Land**
Hinged Bracelet
Emerging from the bottomless mud and gore of the fields of Passchendaele, the ruins of humanity and war blossom. Sizes: Small & Large

* **CAUTION:**
Repeated over-bending of bangles will cause metal to fracture.

Timepieces

Wristwatches and bracelet, pendant and fob watches are all inset with an imported, quality quartz crystal movement. Several of the watches are enhanced with Swarovski crystal, trans-enamel or two-tone finishes. Watches come complete in either a black flock presentation pouch or an attractive black gift box, all gold-blocked with the Alchemy logo.


Visit our website www.alchemyengland.com
for additional views of all Timepieces

ALCHEMY
England • 1977

Model is wearing -
AW26 Temp De Sentiment
ROSE1 Black Rose

Model : Lady Amaranth

AW26 Temp De Sentiment; has a 35" chain
and can be worn longer than shown here.

 For more information behind Alchemy's arcana of subjects, relating to products, symbols, designs and very much more, see "Further Information" on page 3.



1
AW26
Temp De Sentiment



2
AW22
Bed Of Blood Roses
Bracelet Watch



3
AW16
Imperial Dragon



4
AW10
Rose Garden



5
AW20
Artemesia
Bracelet Watch



1 **AW26
Temp De Sentiment**

Pendant /Fob Watch
The key to happiness and contentment is so often found in the memories of past loves and times gone by...With 24mm dia. quartz movement, on 35" chain.
‡ N ♦

2 **AW22
Bed Of Blood Roses
Bracelet Watch**

Wristwatch
Tangled emotions and romance; sparkling roses flourish within the heart's blood of this intoxicating watch. Swarovski crystals glitter from beneath the bright red enamel. With 24mm dia. quartz movement. ‡ ♦

See matching necklace P630 (page 15), earwrap E329 (page 37)

3 **AW16
Imperial Dragon**

Wristwatch
With all the mystique of the orient and the elegance of a Victorian connoisseur collector; adjustable. With 24mm dia. quartz movement.

4 **AW10
Rose Garden**

Wristwatch
A forgotten bed of black roses and Swarovski crystals; with stainless steel cobwebs and 24mm dia. quartz movement. ‡ ♦
Shown with packaging that all Alchemy timepieces are sold with.

5 **AW20
Artemesia
Bracelet Watch**

Wristwatch
Alluring Fairie spirits of bitter Wormwood support the quartz watch face mount; with translucent 2-colour green enameled wings & adjustable chain fitting. With 24mm dia. quartz movement.

6 **AW24
Heartfelt**

Strap Watch
Four beautiful Swarovski crystal hearts adorn this ravishingly ornate leather strap, for keeping time as well as looking gorgeous! With 24mm dia. quartz movement. ‡ ♦
One size Adj.

6
AW24
Heartfelt





1
AWC2
Magistus'
Double-Albert
Fob Chain



2
ULWI
Life Time



3
AW19
Berserker



Model is wearing :

- P737 Blast Furnace Behemoth
- CL13 Empire Spur Gear Cufflinks
- GA1 Foundryman's Ring Cross Shirt Sleeve Band
- R147 GMT Ferromonic Field Detector Ring
- R44 Dr.Von Rosenstein's Induction Principle Ring
- AW17 The Nevermore Fob Watch
- AWC2 Magistus' Double-Albert Fob Chain

Model : Sebastian Black

www.facebook.com/sebastian.black.artist



4
AW17
The Nevermore
Fob Watch



5
AW18
EER Patent
Solar-Powered
Turbine Fob Watch



6
AW15
EER Steam-Powered
Entropy Calibrator



**1 AWC2
Magistus'
Double-Albert
Fob Chain**
Fob Chain
An elegant 24" rope chain with central T-bar and double-sided fob and an Albert swivel at either end for the well-acquainted gentleman.
Shown with reverse view of casting.

**2 ULW1
Life Time**
Wristwatch
Fantastic watch strap with intricately modelled pewter tattoo script-style lettering, reading "Life" & "Time". Also featuring modelled skulls and a uniquely designed watch face; on high quality Italian leather strap.
Shown with detailed views.

**3 AW19
Berserker**
Wristwatch
Tribute to the Northern warrior's rare elite, who's frenzied state of super-strength and fearlessness was irresistible to mere mortals; removable 35mm Quartz movement.
Shown with detail of 'bone link' bracelet.

**4 AW17
The Nevermore
Fob Watch**
Fob Watch
Edgar Allan Poe's epitome incorporating cryptic 'POE' monogram and engraved with extracts from 'The Raven'. With 35mm dia. quartz movement watchface.

**5 AW18
EER Patent
Solar-Powered
Turbine Fob Watch**
Fob Watch
The second and even more technologically advanced timepiece from Rosenstein. Its brass turbine blades (themselves incorporating solar sensors), rotating to generate the transformed power-(the turbo may also be hand-cranked).
With 35mm dia. quartz movement and magnetic-fastening hatch.

**6 AW15
EER Steam-Powered
Entropy Calibrator**
Wristwatch
Measuring the decay of time using Carnots second law of thermo dynamics. With 35mm dia. quartz movement and unique 'Galvanic Scale' watch face and magnetic-fastening hatch.
One size adjustable.
Shown with open hatch, revealing the gauge watch face.

**7 AW23
Telford
Chronocogulator
Timepiece**
Wristwatch
An antiqued pewter 'Cast-Iron' framework and gearwheels on a robust, high quality, Italian brown leather strap, mounts the essential, modern antiquarian's, sepia cog-faced time piece; with Swarovski crystals. With 35mm dia. quartz movement. ‡

Timepieces are shown smaller than actual size.

◆ Made with -
SWAROVSKI ELEMENTS

‡ Specified crystal colours are subject to availability and may be substituted.

ALCHEMY
England · 1971



7
AW23
Telford
Chronocogulator
Timepiece



Accessories



1
BE4
Alchemist
Pen Top



2
ABR1
Funereal Beard
& Hair Beads



1 **BE4**
Alchemist Pen Top
Pen Top
Classic Alchemist's skull, cast in English Pewter, securely fitted to the top of the latest, black Bic ball pen (non-toxic); pen included.

2 **ABR1**
Funereal Beard & Hair Beads
Beard / Hair beads (Set of 3)
Essential regalia for the well appointed mute and pagan mourner. Set of 3 includes Janus Skull, Coffin & Alchemist Skull.

3 **Lighters**
'Stormproof' lighters with hinged lid. (Lighter shape is subject to change & may vary from ones illustrated). Lighter fluid required (not supplied).

ULAZ3 **Tattoo Gun**
AAZ27 **Wyverex**
AAZ10 **Or Philosophy**
AAZ3 **Pentagram**
AAZ29 **Noctis Cross**

ALCHEMY
England

www.AlchemyEngland.com

3
LIGHTERS
ULAZ3
Tattoo Gun

AAZ27
Wyverex



AAZ10
Or Philosophy



AAZ3
Pentagram



AAZ29
Noctis Cross



Model is wearing :

- WS6 Marquis De Lune Walking Cane
- R204 Necrogram Ring
- R207 Desolation Ring
- R147 GMT Feromonic Field Detector Ring
- R44 Dr.Von Rosenstein's Induction Principle Ring
- P724 Orbium Coelestium Mechanicum Pendant
- CL13 Empire Spur Gear Cufflinks
- GA1 Foundryman's Ring Cross Shirt Sleeve Band
- GA2 Keys To Progress Shirt Sleeve Band

Model : **Sebastian Black**

www.facebook.com/sebastian.black.artist

**4 EP2
D'Duke's
Polarising Monocle**

Monocle
Believed to be the first optical device to successfully filter polarised light waves, (however, the striated glass element has, sadly, been lost); on approx. 20" long, fine black curb chain with T-bar.



4
EP2
D'Duke's
Polarising
Monocle

**5 AMA5
Temeritas Wings**

Medal
Airman's award for abandoned recklessness.



5
AMA5
Temeritas Wings



6
GA2
Keys To Progress
Shirt Sleeve Band

**6 GA2
Keys To Progress
Shirt Sleeve Band**

Sleeve Band
A masterly and stylish symbol of the times, and of the infinite possibilities for pioneers of the new age; 2-tone pewter with elasticated sleeve band.



7
GA1
Foundryman's Ring
Cross Shirt Sleeve Band

**7 GA1
Foundryman's Ring
Cross Shirt Sleeve Band**

Sleeve Band
Industrially influenced, Edwardian white-collar dress code, imbued with a strain of ancient Celtic faith. Shown approximately actual size.

**8 CL11
Miasmatic
Reactor Core**

Cuff Links
Atmospheric purifying and energy extraction device against the hazard of 'noxious air'. With green rod core.

11
S10
Gearwheel Buttons



8
CL11
Miasmatic Reactor Core



9
CL13
Empire Spur Gear



10
CL10
Skull 'n' Bones
Stargazer Cufflinks

**9 CL13
Empire Spur Gear**

Cuff Links
Demonstrating the advanced state of ones existence by industrial exemplification. With Swarovski crystals. †

**10 CL10
Skull 'n' Bones
Stargazer Cufflinks**

Cuff Links
Pair of piratical death's heads. With Swarovski black diamond crystal eyes. †



12
S1
Skull Buttons

**11 S10
Gearwheel Buttons**

Pewter Buttons
15mm diameter. One random button is gilt plated.

**12 S1
Skull Buttons**

Pewter Buttons
Pewter replacement shirt buttons in packs of 6. Sewn-on with black thread through a pair of subtly placed thread-holes.

Walking Canes

Individually hand-crafted, genuine Beechwood canes, fitted with uniquely styled, hand-made, Alchemy handles. Made in England.

**13 WS1
The Alchemist**

Walking Cane
Sinister sophistication is offered in this highest of quality walking canes. The solid, hallmarked, sterling silver handle (resin filled for strength), is mounted upon a hand-made beech shaft, classically black lacquered and metal tipped.

13
WS1
The Alchemist



**14 WS6
Marquis de Lune**

Walking Cane
Ornate, cast pewter top, mounting a giant, 27mm, sparkling, multi-faceted Austrian Swarovski crystal, as befitting the noble nocturne. †

14
WS6
Marquis de Lune



**15 WS3
Beast's Claw**

Walking Cane
The ultimate gentleman's cane, displaying a heady embodiment of elegance, mysticism and ferocity. Feel the smooth crystal ball rotate in your hand, within the grasp of the hand-polished pewter claw.

15
WS3
Beast's Claw



All Walking Canes are 21mm dia. X 908mm length approx.

Accessories

The Elegant Way To Display Your Nocturnal Tendencies.

Visit our website www.alchemyengland.com for additional views of all Accessories.

For more information behind Alchemy's arcana of subjects, relating to products, symbols, designs and very much more, see "Further Information" on page 3.



6
HC3
Claddagh Hair Comb



1
HG1B / HG1S
Skully Hair Grip
Black / Silver



3
HS4
Roseus
Pentagram



2
HSC2
Heart Of
An Angel



4
HH9
Get A Grip



5
HSC1
Smoke Dragon



7
HH8
Serpent's Eye



8
ULFHSC1
Devil Heart



9
HH1
Darkling Bat Slide

10
HH6
Crystal Bat Clip

14 AAC47
Mortalitas Pill Box
Pill Box
A miniature bedside skull to keep safe and remind you of your daily ration of essential medication; with brass hinge and catch. Shown approximately actual size.



14
AAC47
Mortalitas
Pill Box

15 ROSE1
Black Rose
Rose
Convincing, artificial symbol of perfection and tragic love.

16 AAC58
Litternere Jewellery Stand
Jewellery Stand
An unquestioning servant arisen from its stifling grave in devoted supplication to its pampered mistress's assistance.

A dramatically different and substantial jewellery stand, poised to be casually draped with all the rings and necklaces of any special, haunting value.



16
AAC58
Litternere
Jewellery Stand

15
ROSE1
Black Rose



ALCHEMY
England · 1971

**1 HG1B / HG1S
Skully Hair Grip
Black/Silver**

Hair Grip (Single)
The boneheaded, hollow-eyed simpleton stares into the face of convention and confounds any curious onlooker. Available in black or silver; supplied singly.

**2 HSC2
Heart Of An Angel**

Hair Screw
The crystal heart is the transition between spirit and matter, and the wings the spirit itself; with Swarovski crystal heart. ‡ ✦

**3 HS4
Roseus Pentagram**

Hair Stick
For Alchemical perfection.

**4 HH9
Get A Grip**

Hair Slide
A sinister looking, yet innately harmless main de l'os. On a sprung steel hair clip.

**5 HSC1
Smoke Dragon**

Hair Screw
Spiralling out on the wings of a soft caress comes a rare creature of mystery and imagination.

**6 HC3
Claddagh Hair Comb**

Hair Comb
A gothic variant of the traditional, C17th, Galway symbol of eternal love, friendship and loyalty by virtue of its heart, hand and crown, but with bones for 'beyond the grave'.

**7 HH8
Serpent's Eye**

Hair Slide
Twin Celtic serpents infused with sacred healing powers encircle the sanguine red abalone snake-eye, to protect the wearer against the evil eye. Natural abalone stone in the centre, upon a sprung steel hair clip.

**8 ULFHSC1
Devil Heart**

Hair Screw
Love, is sinful, naughty and oh, so much fun! With translucent red enamelled heart & Swarovski crystal highlights. ‡ ✦

See matching pendant ULFP20, earstuds ULFE22, & ring ULFR6 (pages; 25, 33 & 38.)

**9 HH1
Darkling
Bat Slide**

Hair Slide
The classic vampiric bat swoops spreadeagled towards it's prey..

**10 HH6
Crystal Bat Clip**

Hair Clip
A symmetrical pair of bats in flight, each with Swarovski crystal-studded wings, on a durable, 20mm black plastic sprung clip. ‡ ✦

**11 DP3
Bat Dress Pins**

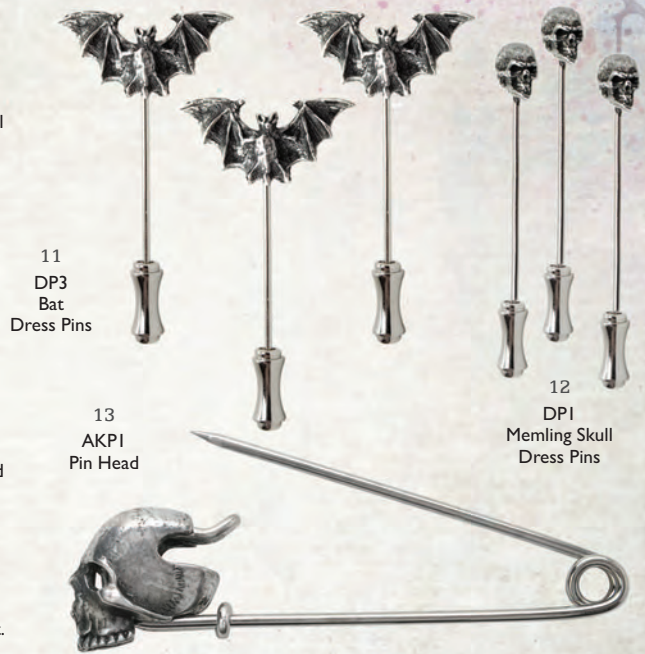
Dress Pins (Pack of 3)
An understated reminder of the silent, prevailing powers of the night.

**12 DP1
Memling Skull**

Dress Pins (Pack of 3)
Understated, Hans Memling style skull, as if taken from his Vanitas Triptych.

**13 AKP1
Pin-Head**

Kilt Pin
A most freakish jewel, and a strong and distinctly different way to fasten your stuff, from a kilt or a coat to a kit bag or cloak. **N**



11
DP3
Bat
Dress Pins

13
AKP1
Pin Head

12
DP1
Memling Skull
Dress Pins



17
LG6
Coffin Purse

18
LG57
Damned
Love Purse

Wallets & Purses



19
LG46
Bat Purse



20
LG15
Coffin Wallet



**17 LG6
Coffin Purse**
Leather Purse
Soft black leather purse or cigarette case, with zipped side opening, on 15" (44.5cm) curb chain.
Approx. dimensions: 16.5cm (6") high X 10.5cm (4") wide X 5cm (2") deep.

**19 LG46
Bat Purse**
Leather Purse
Sculpted leather bat-shaped purse, with zip-top & curb chain strap.
Approx. dimensions: 19cm (7") wide X 10cm (4") high X 4cm (1") deep.

**20 LG15
Coffin Wallet**
Leather Wallet
In high quality leather, with large bank-note section, several card pockets and eyelet hole for chain attachment.
Approx. dimensions: 17cm (6") high X 11cm (4") wide.

**21 LG67
Alchemist Biker Wallet**
Leather Wallet
A simple and practical, classic leather biker wallet, but stamped with The Alchemist's skull and black rose; on 14" steel chain with cast skull belt loop.
Approx. dimensions: 9.2cm (3 3/4") high X 12.5cm (5") wide.



21
LG67
Alchemist Biker Wallet



**18 LG57
Damned Love Purse**
Leather & Canvas Purse
For girls with a gothic heart. Vintage-style black leather purse with contrasting washed-black canvas heart. With top zip-opening and adjustable strap.
Approx. dimensions: 15cm (6") wide X 14.5cm (5 3/4") high X 5.5cm (2 1/4") deep.

Bags

Alchemy's utterly unique collection of bags are individually hand-made by experienced craftsmen, in a specialist factory in southern Poland, from best quality, natural leathers and fabrics.

Leather is a natural product with unique characteristics and natural variations and marks. These are features, not faults, which reveal the individuality of each leather item. One of the distinctive and pleasing features of leather is that it assumes a character of its own with age.

Visit our website www.alchemyengland.com for additional views of all Bags.



To ensure you have an authentic Alchemy leather product, the handbags, purses & wallets featured here are branded with unique 'Alchemy Rose' logos. Be sure to check your product for authenticity.

For more information behind Alchemy's arcana of subjects, relating to products, symbols, designs and very much more, see "Further Information" on page 3.



1
LG72
Ravenjäger



3
LG61
Empire 'Captainette' Purse



2
LG71
Aetheric Inclinator
Attaché



4
LG64
Wing-Commander's
Attaché Pouch



5
LG32
Coffin Back Pack



6
LG58
Eye Of Providence
Handbag

7
LG73
Magic Purse



8
LG70
Alice Satchel -
Skulls Out



9
LG62
Empire 'Intrepid' Valise



1 LG72
RavenJäger
Canvas Bag
A classic huntsman's shoulder bag, in black, for the ghost of the raven, its spirit seen seeping from the fabric of the dark scrip. **N**
Approx. dimensions:
25cm (9 3/4") wide X 25cm (9 3/4") high X 10cm (4") deep.

2 LG71
Aetheric Inclinator Attaché
Leather & Canvas Bag
Indispensable compass pouch for the seasoned cloud pilot. Vintage cotton canvas and leather purse, with front print 'Inclinometer' design, zipped top opening, adjustable, removable leather shoulder strap & pewter Alchemist stud.
Approx. dimensions:
15cm (5 3/4") dia. X 4.5cm (1 3/4") deep.

3 LG61
Empire 'Captainette' Purse
Leather & Canvas Bag
High-flying adventurer's shoulder purse of 'vintage' cotton canvas and leather; with adjustable strap.
Approx. dimensions:
9cm (7 1/2") wide X 14cm (5 1/2") high X 6.5cm (2 1/2") deep.

4 LG64
Wing-Commander's Attaché Pouch
Leather & Canvas Bag
Designed for the reckless, duty-bound subaltern with adventure written in their genes. Essential communications are always assured with this vintage canvas and leather pouch, with its front iPhone pocket, whether worn in belt-pouch, shoulder bag or backpack mode.
Approx. dimensions:
20.5cm (8") wide X 146.5cm (6 1/2") high X 6cm (2 1/2") deep.
Views show LG64 worn as belt pouch, shoulder bag & as backpack.

5 LG32
Coffin Back Pack
Leather Bag
An 11" (28cm) high, highest quality Italian made, black leather back-pack with two top-zipped compartments. Front has appliquéd black leather cross. With an Alchemy black rose 'A' badge, adjustable leather straps and hand loop.
Approx. dimensions:
21cm (8") wide X 28cm (11") high X 11.5cm (4") deep.

6 LG58
Eye Of Providence Handbag
Leather Bag
In the protection of the all-seeing eye of the gods! An eerily realistic enameled metal and hand crafted leather eye, unflinchingly peers from the front flap of this stylish shoulder bag. Hand made of vintage-style black leather with adjustable strap.
Approx. dimensions:
19.5cm (7 3/4") wide X 17.5cm (6 3/4") high X 7cm (2 3/4") deep.

7 LG73
Magic Purse
Canvas Bag
A Cabalistic pentagram shrouds the ancient passage from the Holy Zohar, with a prophetic message on the interpretation of truth from dreams. **N**
Approx. dimensions:
19cm (7 1/2") dia. X 4.5cm (1 3/4") deep.

8 LG70
Alice Satchel - Skulls Out
Leather Satchel Bag
A classic, real leather satchel bag, but IN BLACK! Starkly emblazoned with a giant, 3D, gunmetal-pewter Skull, for an instant attitudinal impression. With debossed Alchemy 'A' to the front.
Approx. dimensions:
33cm (13") wide X 26.5cm (10 1/2") high X 8cm (3") deep.

9 LG62
Empire 'Intrepid' Valise
Leather & Canvas Bag
Heavy-duty, adventurer's shoulder bag, hand-made of 'vintage' cotton canvas and leather, with concealed zipped compartments and various pockets for mobile phones, pens, etc. The metal plaque, in Latin, reads: 'The fear of dying is worse than death itself'.
Approx. dimensions:
37cm (14 3/4") wide X 33.5cm (13") high X 11.5cm (4 1/2") deep.

10 LG60
Empire 'Aviator' Pouch
Leather & Canvas Bag
Gentleman officer's pouch, (with detachable shoulder strap option), of 'vintage' cotton canvas and leather, with mobile phone and pen pockets.
Approx. dimensions:
12cm (4 3/4") wide X 20cm (8") high X 6.5cm (2 1/2") deep.
LG60 shown worn.

10
LG60
Empire 'Aviator' Pouch



Bags are shown smaller than actual size.
BAGS NOT TO SCALE; (check dimensions)

1 BT846

Mjolnir

T-shirt

Thor the storm god's mighty weapon of elemental awe. Mjölñir in Old Norse means "That which marks and pulverises to dust". A amulet of ancient nordic magic wrought by the dwarven brothers Sindri and Brokkr, endowing the wearer with strength and fortitude. The fear of Thor's hammer was all that held back the frost giants, fearsome foes of the gods of Asgard before the final apocalyptic battle of Ragnarok.

2 BT847

Corvinculus

T-shirt

Legendary messenger of the gods and arbiter of mortal fate, be it good or ill. A harbinger of doom and destruction on the battlefields of yore, and an ambassador between this world and the next. Speak not your words of betrayal and heresy in his earshot, lest the gods strike you down.

3 BT736

Reaper's Ace

T-shirt

Azrael, the Angel of Death brandishes his calling card, The Spadille. The much maligned thirteenth card of the major arcana, personification of transition and inevitable mortality. Foreshadowing the one appointment we all must keep, but for which no time is set.

4 BT810

Poe's Raven

T-shirt

Edgar Allan Poe's seminal creation alights upon the skull of his poetic father. The master of the macabre who's short life echoes the cry of the raven 'Nevermore'.

5 BT809

Maelstromeus

T-shirt

Darkest spawn of Jormungand, nemesis of the Norse Berserkers. Driving the wind into the sails of their long ships, who's snarling prows are fashioned in supplication to the Lord of the tempest.

6 BT786

Herald Of Rocabarraigh

T-shirt

Gentleman officer's pouch, (with Phantom isle of Gaelic myth, destined to return for a third and final visitation, bringing with it the harbinger of the final apocalypse.

7 BT734

Lightning Dragon

T-shirt

High over the storm lashed crags of Midgard, rising from the dark of the moon, an ophidian colossus ascends to poison the skies. Svafnir the offspring of Jörmungand, the world serpent of Norse legend has come to herald Ragnarök. Twisting and writhing in fury he prepares for a final clash with his bitter foe Thor, God of Thunder.

Model is wearing :

- B99 Warband Buckle
- BT846 Mjolnir T-Shirt
- P709 Satan's Key To Hell Pendant
- A102 Gears of Aiwass Wriststrap
- A103 No Man's Land Bracelet
- RI96 Cross Of Iron Ring

Model : Cort Leavis

T-shirts

Original Alchemy artwork printed onto high quality, black 100% cotton T-shirts.

Visit our website www.alchemyengland.com for additional views of all T-shirts.

For more information behind Alchemy's arcana of subjects, relating to products, symbols, designs and very much more, see "Further Information" on Page 3.

Available in sizes:
M (38"-40" chest size),
L (42"-44" chest size) &
XL (46"-48" chest size).

Branded with AlchemyEngland logo.



1
BT846
Mjolnir



2
BT847
Corvinculus



3
BT736
Reaper's Ace



4
BT810
Poe's Raven



5
BT809
Maelstromeus



6
BT786
Herald Of
Rocabarraigh



7
BT734
Lightning Dragon



Glassware

Elegant and dramatic, cast English Pewter sculpted goblets and wine glasses, some with Swarovski crystal adornments and a range of coloured and clear glass bowls.

Visit our website www.alchemyengland.com for additional views of all Glassware.

For more information behind Alchemy's arcana of subjects, relating to products, symbols, designs and very much more, see "Further Information" on Page 3.



1
 ACWT9
 The Wormwood Tree
 Absinthe Shot Glass



2
 ACWT4
 La Fée Verte
 Absinthe Spoon



3
 ACWT11
 Le Vert de Minuit



4
 ACWT10
 La Belle Epoch
 Absinthe Tumbler



5
 ACWT3
 La Fée Verte
 Tumbler



6
 ACWT2
 La Fée Verte
 Shot Glass

Glassware is illustrated smaller than actual size.
 † Specified crystal colours are subject to availability and may be substituted.



7
AAG51
Ruah Vered
Goblet



8
CWT57
Wild Rose
Pedestal Glass



9
CWT43
Dracula's Cup



10
CWT54
Wings Of Love
Champagne Glass

1 ACWT9
**The Wormwood Tree
Absinthe Shot Glass †**

Shot Glass
The truly decadent way to enjoy, neat, the gratifyingly creative delights of the green fairy. Approx. 123mm high.

2 ACWT4
**La Fée Verte
Absinthe Spoon**

Absinthe Spoon
Traditional sugar cube strainer for watering down absinthe, in the form of an Art Nouveau fairy.

3 ACWT11
Le Vert de Minuit †

Shot Glass
The midnight green; the hour of the revenants and the colour of elixir in hedonistic, 19th century Europe; 'A' is for absinthe!
Approx. 65mm high. *N

4 ACWT10
**La Belle Epoch
Absinthe Tumbler †**

Glass Tumbler
A period, continental classic 380ml stemmed glass for the traditional enjoyment of absinthe; the infusion of a cube of sugar through the absinthe spoon with ice-cold water, turning the spirit into a magical, milky green elixir. With wormwood leaf absinthe badge set with Swarovski crystals.
Approx. 180mm high. ‡ * †

5 ACWT3
**La Fée Verte
Tumbler †**

Glass Tumbler
Traditional tall absinthe tumbler, in 'forest glass' with pewter Art Nouveau fairy base, for taking absinthe with water and sugar. Approx. 180mm high. Absinthe spoon shown, not included. *

6 ACWT2
**La Fée Verte
Shot Glass †**

Shot Glass
'The Green Fairy' Art Nouveau style 'forest glass' shot glass. Approx. 65mm high. *

7 AAG51
Ruah Vered Goblet

Shot Glass
The spirit and the 'Breath of Life' combined with the sensual rose of love, toasting health, harmony and passion. N

8 CWT57
Wild Rose Pedestal Glass

Champagne Glass
Shear hedonism is the only excuse needed to indulge yourselves and toast your ardour for life and love, with this wildly elegant glass filled with sparkling wine. N

9 CWT43
Dracula's Cup †

Wine Glass
For the dangerously intimate encounter; blood red Swarovski crystals drip from the thorns of peril and passion. ‡ †

10 CWT54
**Wings Of Love
Champagne Glass †**

Champagne Glass
The most passionate way to toast your love, with multi-faceted Swarovski crystal hearts, flying high to meet their destiny. ‡ †

* This glass item is traditionally hand-blown. Minor flaws and imperfections are a feature which naturally enhance the beauty of the glass.

† All Alchemy glassware is subject to our repair service. See note on Page 3.

DRINKING VESSELS

- * Traditional, glass beer glasses for ale and lager, but with the unique addition of Alchemy's cast pewter badges and labels.
- * Luxury shot glasses of vintage style, ennobled with elaborate English Pewter sculpted detail and bases.
- * Pewter tankards and flasks hand-made the traditional way by our partners in Sheffield, using a heavier 0.26 gauge pewter, and with castings made at our workshops in Leicester.

Visit our website www.alchemyengland.com for additional views of all Drinking Vessels.

For more information behind Alchemy's arcana of subjects, relating to products, symbols, designs and very much more, see "Further Information" on Page 3.

1
CWT48
XXX Black Rose
Ale Glass



2
AAF53
Alchemist
Potion Bottle



3
CWT51
Aqua Vitae



CWT52
Badges showing back
etch details



4
CWT52
The Alchemy
Of Beer

† All Alchemy glassware is subject to our repair service. See note on Page 3.

Drinking vessels are shown smaller than actual size.

‡ Specified crystal colours are subject to availability and may be substituted.



5
CWT56
Single
Shot



6
CWT55
Ruah Vered



7
CWT47
The Alchemist
Shot Glass



8
CWT44
Chrysler-Bat
Shot Glass



9
CWT26
Dragon's Claw
Shot Glass



10
AAT10
Silver
Dragon



8 CWT44
**Chrysler-Bat
Shot Glass †**
Shot Glass
Evoking the grandest period
of brave, new creative design:
Art Deco and the spirit of
sky-rocketing New York in
the 1920's. †

9 CWT26
**Dragon's Claw
Shot Glass †**
Shot Glass
Dragon motifs decorate the fleury
cross base of this hard liquor glass.
Shown with pierced base which is
visible through top of glass.

10 AAT10
Silver Dragon
Pewter Tankard
This breathtaking sculpted dragon
in full flight, forms the handle of
this stylish 1 pint capacity (600ml)
tankard.

11 AAT37
**Turpin's
Gallows Tankard**
Pewter Tankard
An enduring tribute, to drink a pint
to the memory and the dignified
death of the legendary London to
York highwayman, Dick Turpin;
a polished, 1 pint traditional
pewter tankard.

12 AAT25
Viking Horn
Pewter Tankard
Robust 1 pint (600ml) tankard with
simulated horn 'fertility' handle in
traditional Viking style and carved
pewter mounts.



11
AAT37
Turpin's Gallows
Tankard



12
AAT25
Viking Horn

1 CWT48
**XXX Black
Rose Ale Glass †**
Ale Glass
An imperial pint straight glass,
badged in glorious dignity with a
cast pewter skull 'n' bones label,
befitting all serious ale-aficionados.
Approx. 150mm high.
Shown with etched design on
reverse of pewter label.

2 AAF53
Alchemist Potion Bottle
Pewter Flask
Based on a typical Victorian
chemist's bottle, this ornate
pewter flask is both a temptation
and a warning to those that use it!
A 2½ fl.oz. flask embossed with
'ELIXIR-POTION-POISON'
and a red enameled coffin &
crossbones, and features a fully
3D-modelled Death's Head screw
cap with 'DRINK ME' inscribed
on the reverse.

3 CWT51
Aqua Vitae
Beer Glass
Double-headed dragon beer,
'aqua vitae' is Latin for 'water of
vitality', which must mean lager!
Glass approx. 180mm high.
Approx. half pint capacity (300ml).

4 CWT52
The Alchemy Of Beer
Beer Glass
The three alchemical symbols
represent the ingredients which
make the venerable brew, BEER;
water, grain and yeast!
Glass approx. 180mm high.
Approx. half pint capacity (300ml).
Shown with all three castings with
corresponding back etches.

5 CWT56
Single Shot †
Shot Glass
You might need a stiff drink, when
you know it could be your last! **N**

6 CWT55
Ruah Vered
Shot Glass
The spirit and the 'Breath of Life',
entwined with the romantic and
sensual rose of faithful love.
A more beneficial and noble
toast could not be raised!

7 CWT47
**The Alchemist
Shot Glass †**
Shot Glass
Drink a health to yourself
with the wisest of them all
- Death and the Black Rose.

The Vault™

by Alchemy

Original and official:
Quality resin giftware, designed by
Alchemy Studios, England.

Visit our website www.alchemyengland.com
for additional views of all Vault items

For more information behind Alchemy's arcana of
subjects, relating to products, symbols, designs and
very much more, see "Further Information" on
page 3.

2
V24
Heart Of
Otranto



4
V25
Heart Of
Otranto



3
V27
Nevermore



1
V22
Artemisia Absinthium



V23: Rear View

5
V23
Angel Of
Hades



V23: Front View



6
V20
Lady Talbot's
Retrospector
Hand Mirror



1 V22
Artemisia Absinthium
Resin Wall Clock
Beguiled by the mortiferous fey spirit of bohemian Montmartre, this verdant time-piece inspires and chronicles acts of true genius and oblivion. Approx. height 25cm. **N**

2 V24
Heart of Otranto
Resin Candle Stick
Bearing an eternally lit candle at the highest window of Castle Otranto. So as to guide home the lost soul of a fair daughter. (Candle not included) Approx. height 21.5cm. **N**

3 V27
Nevermore
Resin Compact Mirror
Gaze upon your mortal reflection under the scrutiny of Poe's mocking Raven. Approx. width 9cm. **N**

4 V25
Heart of Otranto
Resin Chalice Bowl
Created for Manfred, Lord of Otranto, at the zenith of medieval artistic endeavour as both a wedding gift and requiem for a lost love. Approx. height 13.5cm. **N**

5 V23
Angel of Hades
Resin Skull
Even in the deepest, darkest circles of hell redemption may rise on secret wings. Approx. height 13cm. **N**

6 V20
Lady Talbot's Retrospector Hand Mirror
Resin Hand Mirror
Constance Talbot's revolutionary spectronic affinity glass allows the subject to glimpse a semblance of their past or future countenance through her patent 'Steam lens'. (Featuring a small magnifying lens). Approx. height 23cm. **N**

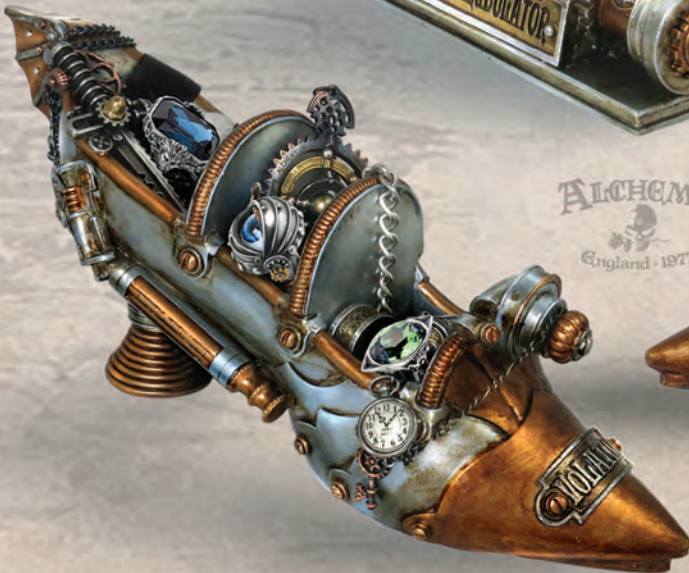
7 V26
Time Chronambulator
Resin Clock
The beating heart of the pan-dimensional adventurer's clockwork time machine. Approx. height 12cm. **N**

8 V21
Spring Heeled Jill
Resin Jewellery Organiser
Extraordinary motoric assistentia shoe of the female rejoinder to the revered gaslight fiend of old London town. Approx length, 28cm. (Jewellery shown not included). **N**

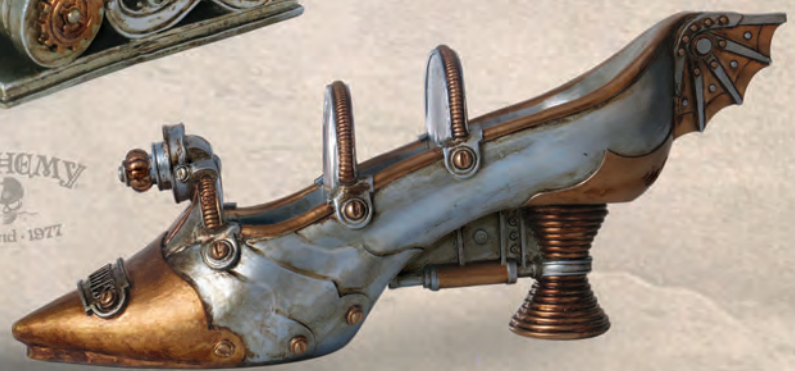


7
V26
Time Chronambulator

8
V21
Spring Heeled Jill



ALCHEMY
England · 1977



The Vault™

by Alchemy



1
V13
Draco Artorius



2
V14
Paladin's Tithe



3
V1
Omega Skull



4
V16
Corvus Alchemica



1 V13

Draco Artorius

Resin Dragon Card Box
Merlin's fabled serpent sleeps his eternal guard, custodian to the tomb of the once and future king. Approx. length 13cm.

2 V14

Paladin's Tithe

Resin Trinket Box
Final resting place for the keepsakes of the tragic, but inevitable, interlude between Birth & Death. Approx. height 6cm.

3 V1

Omega Skull

Resin Skull
Life-sized Alchemist's skull, in aged bone-resin, carved over its entire surface with all the symbolic wisdom of 7000 years of history. With the traditional golden tooth. Approx. height, 13.5cm.

4 V16

Corvus Alchemica

Resin Bird Skull
A larger than life mythic raven skull, personifying the ancient god of prophecy, ill-omen and lost souls. Approx. length 21.5cm.

5 V17

Poe's Raven

Resin Bird & Skull
Inspiring Edgar Allan Poe, Master of the Macabre to give poetic voice to the Raven, "NEVERMORE". Approx. height 18.5cm.

6 V4

Erasmus Darwin's Steam-Cerebrum

Resin Skull
The last and greatest creation to be attributed to the Bedlam Institute of Galvanic Studies. Approx. height 16cm.

7 V3

Metallised Alchemist Gear Knob

Resin Gear Knob
The original Philosophus Magus, guiding the traveller to the path of enlightenment. (Bored and fitted with a rubber grommet for self-tap screwing onto gear sticks). Approx. height 4.5cm.

8 V2

Lapillus Worry Skull

Resin Skull
A diminutive yet uncanny skull to comfort and guide a troubled soul. Approx. height 1.5cm.



5
V17
Poe's Raven



7
V3
Metallised
Alchemist
Gear Knob



8
V2
Lapillus Worry
Skull



6
V4
Erasmus Darwin's
Steam-Cerebrum

The Vault™

by Alchemy



1
V19
The Laidly Relic



2
V7
Bran's Talon



3
V8
Signum Draconis

ALCHEMY
England · 1971



4
V18
Oracle Of Narcissus



5
V10
Black Angel



6
V11
Speculum Mirror

**V19
The Laidly Relic**
Resin Decorative Wall Sconce
The distilled, decorative essence of ancient primal fury & chaos, harnessed to become the ultimate reptilian guardian of hearth and home. Approx. height 25cm.

**2 V7
Bran's Talon**
Resin Candle Holder
An ancient relic of Castle Bran, capturing ancient mysticism to cast light upon the darkness of the one they called the Great Dragon - Vlad Tepes. (Candle not included). Approx. height 15cm.

**3 V8
Signum Draconis**
Resin Candle Holder
Empowering generations of holy knights with the strength and conviction to fulfil their sacred oath. (Candle not included). Approx. height 14.5cm.

**4 V18
Oracle Of Narcissus**
Resin Table Mirror
Stare long enough into the argent pool and one inescapable destiny shall befall all, be they God or mortal. Inscribed with the legend "Memento Vivere, Memento Mori". Whilst you are certain to die, remember that you must first live. Approx. height 27cm.

**5 V10
Black Angel**
Resin Hand Mirror
One of the most alluring of the high order of angels, invoked by the Sigillum Aemeth, Dr. John Dee's scrying stone. Approx. height 23cm.

**6 V11
Speculum Mirror**
Resin Table Mirror
The Latin inscription reads, 'All things change and we with them', the mirror reveals a horrifying memento mori, the face of the future. Approx. height 25cm.

**7 V9
Fate Of Narcissus**
Resin Hand Mirror
Stare long enough into the argent pool and one inescapable destiny shall befall all, be they God or mortal. Approx. height 18cm.

**8 V15
The Stormgrave Chronometer**
Resin Timepiece
Professor Stormgrave's patent celestial chronometer, mapping the forces that govern the passing of eternity. Requires 1 x 1.5v AA battery (not included). Approx. height 20cm.



7
V9
Fate Of Narcissus



8
V15
The Stormgrave Chronometer



AAP8
Poe's Raven
Clock



AAP9
Sylundine
Clock

CLOCKS

A stunningly graphic selection of durable, 13 1/4" dia. (340 mm), quartz movement, Alchemy Gothic inspired wall clocks with some of Alchemy's most striking images. Requires one AA battery (not included).



AAP10
Birth Of A Demon
Clock



AAP11
Lightning Dragon
Clock

3D LENTICULAR POSTCARDS

Fantastic new 3-D moving perspective postcards, featuring a range of classic Alchemy artworks.



ASPC435
The Highgate Horror
3D Postcard

ASPC513
Mortuo Ergo Sum
3D Postcard

ASPC473
Good & Evil
3D Postcard



ASPC596
Rose des Folies
3D Postcard



ASPC736
Reapers Ace
3D Postcard



ASPC220
Snagov
3D Postcard

HANGING SIGNS

From the philosophical musings of the Alchemist himself and the artists of Alchemy Studios, come a collection of profound and essential dark pearls of wisdom; 90 x 65 mm mini, enamelled metal signs, pre-strung to hang anywhere.



ALHS2



ALHS3



ALHS4



ALHS5



ALHS1



ALHS6



ALHS7



ALHS8



ALHS9



ALHS10



ALHS11



ALHS12

ABF596
Rose des Folies
Flag



ABF435
The Name Of The Rose
Flag



ABF504
Mists Of Vespertide
Flag



CARD7
Alchemy Tarot
Tarot Card Set



ULCARD
UL13 Anarchy
Playing Cards



CARD8
Bicycle Poker Deck
Playing Cards

POSTER FLAGS

A massive 29" x 42" (750 mm X 1080mm) these full colour Poster Flags are made from lightweight polyester for indoor or outdoor use, and can be hung as a poster or flown as a flag.

ALCHEMY



England · 1977

POINT OF SALE



Display boards are available for Alchemy's retailers.
Dealers please contact the sales team for more details.
Boards measure approx:
27.8cm (11") wide X 36.7cm (14 1/2") high.

Alchemy LIFETIME GUARANTEE . . . Alchemy is the best!

And we guarantee our Alchemy England crafted pewter products* to be hand made to the highest standards and of the finest materials, and will therefore repair or replace any such purchased item suffering from defects or faulty workmanship at any time, free of charge!

(*made at our Leicester workshops - please see our Guarantee and Returns Policy at www.alchemyengland.com/guarantee).

Real Pewter!

The metal used in the manufacture of all Alchemy's pewter products is the highest grade "English Pewter". Some manufacturers misleadingly use the term 'pewter' to describe alloys containing lead. This results in inferior, more easily made products which are heavier, softer and of a darker colour and are much more prone to tarnishing and disfigurement. English Pewter is the finest grade of pewter, (to BSEN611-1:1995 standard). Traditionally, pewter was a mixture of lead and tin, but today, English Pewter is a rich, high-grade alloy of 92% tin with copper, (plus a few legitimate trace elements), and is regarded as a 'semi-precious' metal valued second only to silver. For jewellery and accessories this is the safest tin-based alloy in use and is fully lead, cadmium & nickel compliant to California Proposition 65 for total lead & cadmium content, Commission Regulation (EU) 494/2011 (REACH) for lead & cadmium and European standard BSEN1811:2011 for nickel. English Pewter is very much harder to craft than zinc alloys and the old and primitive forms of pewter, which contain significant amounts of toxic impurities which ease production, however, please beware as these poor alloys are still used by many manufacturers around the world today.

Copyright, Imitations & Forgeries:

All products and designs are the exclusive copyright of Alchemy Carta, England, and are registered designs and trademarks world-wide. Alchemy Studios conceive, research, design and develop all their ideas and products themselves, at considerable cost, to bring you fresh, new creations. Any attempt at forgery, imitation or passing-off endangers Alchemy's existence. Therefore, infringements will result in investigation leading to prosecution. Any assistance from our customers against piracy will be greatly appreciated.

Looking after your Alchemy

Pewter, like silver, may tarnish, but can easily be polished up to a brilliant lustrous shine, using a brass or silver polishing wad and a wipe with a dry cloth. DO NOT put pewter into a salt-loaded dishwasher, which could corrode a polished surface. Alchemy Guarantee: Alchemy will gladly replace any product proven to be defective.

Trade Memberships

Alchemy Carta Ltd. are members of the Association of British Pewter Craftsmen, affiliated to the ancient The Worshipful Company of Pewterers.

Trade & Identification Marks

All products, space permitting, are marked with one or more of the following identification marks, or their derivatives :



© ALCHEMY CARTA LTD.

www.alchemyengland.com

THANK YOU

We offer our sincere thanks to friends and colleagues for their help & generosity in contributing to the conception of this **Alchemy** catalogue. In particular, to our wonderful models who freely gave their time, passion and energy to add greatly to the mystery and glamour of our latest catalogue, including those who supplied their own professional images for inclusion. Also to the photographer Stu Williamson, (<http://www.stuwilliamson.com>), for his amazing contribution. And a special thank you to BURLESKA (www.burleska.co.uk), who's wonderful clothing collections enhance our Alchemy catalogue still further.

All Alchemy's products that feature Swarovski crystals are packaged with an authentic tag.



Incorporated into many of Alchemy's designs, when appropriate, is a sparkling display of premium cut crystals manufactured by Austrian company Swarovski. These cut crystals are marketed as SWAROVSKI ELEMENTS and add glamour, style and value to all of Alchemy's design pieces labelled as "MADE WITH SWAROVSKI ELEMENTS". This label is a certificate of authenticity and identifies products made with genuine SWAROVSKI ELEMENTS.

Items with this symbol are made with - SWAROVSKI ELEMENTS

Disclaimer:

At Alchemy we make all our jewellery by hand. We are very proud and work extremely hard to achieve our high standards. However, we also have to buy-in components from other suppliers and while we do our very best to maintain this quality, we cannot always rely on their availability or consistency. We therefore reserve the right to change crystals, chains and other findings, or even to discontinue pieces if necessary and apologise for any such disappointment.



ALCHEMY

ENGLAND

Apparel

www.alchemyenglandapparel.com

Alchemy England Apparel -AEA-
Alchemy, the English veteran alternative
lifestyle artists and designers have
teamed up with an edgy Italian streetwear
designer and manufacturer to bring you
Alchemy England Apparel.
Together we have been creating unique,
original, rock style clothing for
guys and girls.

Go on, we dare you to be different...
To view the full inspiring collection or inquire
about stocking it, please visit the website:
www.alchemyenglandapparel.com



Genuine Alchemy art with Italian styling
-ALCHEMY ENGLAND APPAREL-
original designs; the proper alternative.



Models on this spread : John, Matteo, Yuxi & Rosie Mac
Courtesy of : Alchemy England Apparel

ALCHEMY licensing™

OFFICIALLY LICENSED ALCHEMY PRODUCTS

Alchemy Studios' unique and growing collection of distinctive artwork has, for many years now, been inspirational and highly influential within the alternative genres. Over time, its images have been used on T-shirts, posters and calendars, etc. But now, Alchemy's international appeal has led to a great variety of different licensed products being developed with over 40 official Licensees worldwide, and these are available through various distributors. Unfortunately, Alchemy are unable to sell most of these items themselves, however, you can contact all of our Licensees directly for details through the Alchemy licensing website at:

www.alchemylicensing.com



CONSALNET

Consalnet, Poland.
www.consalnet.pl
Murals and wall decor.



NOVELTEX

NOVELTIES TEXTILES GIFTS

Noveltex, UK.
www.noveltex.co.uk
Bedding, towels,
textiles & gifts.



Clementoni

Clementoni, Italy.
www.clementoni.com
Black Rose 1000 Piece Puzzles.



LIVE

Live d.o.o., Slovenia.
+386 05 66 08 109
Stationery, School items.



D'Addario
PLANETWAVES™

Planet Waves, USA.
www.planetwaves.com
Guitar straps.



Hot Picks
GUITAR ACCESSORIES

Hot Picks, USA.
www.hotpicksusa.com
Standard & motion guitar picks.



LLEWELLYN
New Worlds of Mind and Spirit

Llewellyn Worldwide, USA.
www.llewellyn.com
Books, calendars & tarot publishers.



zippo

Zippo, Germany.
www.zippo.de
Windproof Lighters.



Retriever Sports

Retriever Sports, UK.
www.retrieversports.com
Dart Flights.



PYRAMID INTERNATIONAL

Pyramid International, UK.
www.pyramidinternational.com
Calendars, mugs & many more printed products.

DecalGirl

Decal Girl, USA.
www.decalgirl.com
Mobile device skins.





ALCHEMY ENGLAND 1977

OFFICIAL DEALER

ALCHEMY

England 1977

WWW.ALCHEMYENGLAND.COM